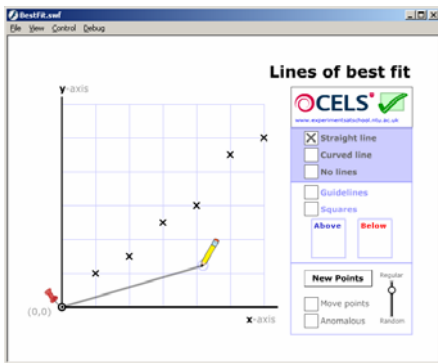


Line of best fit

User's guide



This interactive Flash animation has been created as a tool to help discuss and display lines of best fit. It can be used without a keyboard and so is particularly suitable for interactive whiteboards.

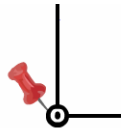
Six points on a Cartesian coordinate plane are used as the basis to plot straight lines or curves.

These points can be randomly generated and/or moved around using the mouse.

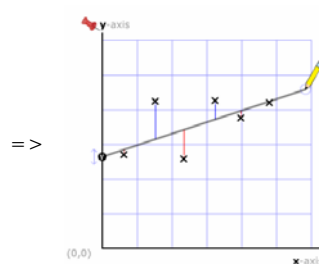
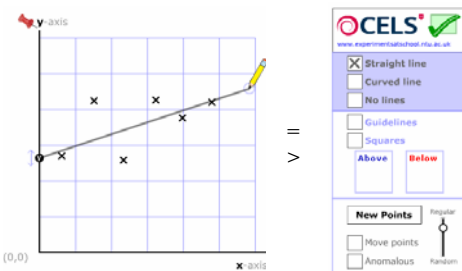
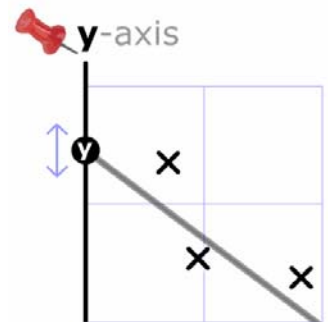
Pencil
Start spot

Lines are plotted between the pencil point and the 'start spot'. To move the pencil, click inside the blue circle, and hold/drag in the usual manner.

The 'start spot' is initially pinned to the origin but can be moved along either axis to allow interception at points other than the origin.



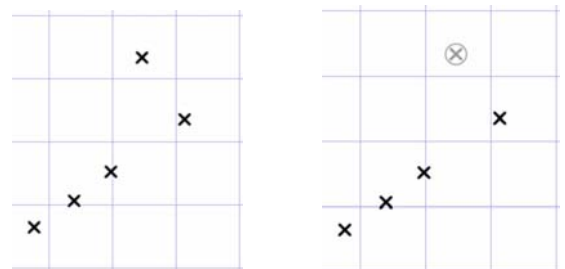
Pin to origin => click on "**(0,0)**"
Move on either axis => click on "**y-axis**" label or "**x-axis**" label.



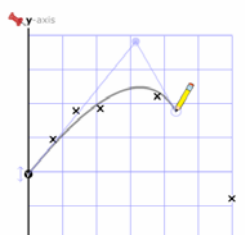
Guidelines can be added to show how far points are above or below the line being drawn.

The lengths of these vertical lines are combined and used to display % above or below.

Only *active* points are used in the percentage calculation. To make points *inactive* (grey), click on the 'Anomalous' option and then select a point. Alternatively click on a point whilst simultaneously holding down the space key.



Points are fixed unless the 'Move' option is selected. Again this can also be achieved by holding down 'Ctrl' and dragging a point.



Curves are drawn using three points – the 'start spot', pencil point and control point. The control point appears as a pale blue circle and can be dragged around in the usual manner.

It is not possible to draw a curve and line at the same time. Guidelines are only available for straight lines.