

Nottingham Trent University

Guide for International Students



Nottingham Trent
University



Teaching
Excellence
Framework



Visit [ntu.ac.uk/international](https://www.ntu.ac.uk/international) to find out more.

Welcome

A great place for you to study 4
 Your future..... 6

Find your course

Course list..... 8
 January start courses 18
 Pre-sessional English for Academic Purposes..... 21

Scholarships

International scholarships 22
 Benefits of an NTU scholarship 24
 Living Costs 26

More about NTU

Getting to know us 28
 Facilities and resources 30
 Learning with the best..... 32
 World-class research 34

More about our Academic schools

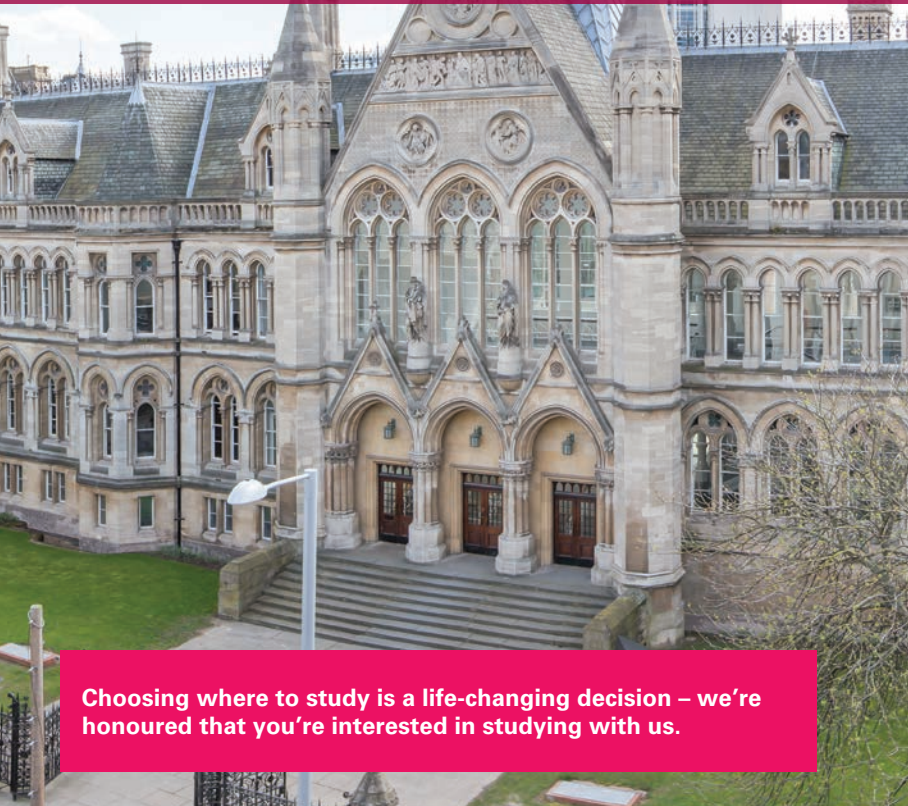
School of Art & Design 36
 School of Architecture, Design and the Built Environment 38
 School of Animal, Rural and Environmental Sciences 40
 School of Arts and Humanities 42
 Nottingham Business School 44
 Nottingham Law School 46
 School of Science and Technology..... 48
 School of Social Sciences, including the
 Nottingham Institute of Education..... 50

Living here

Explore Nottingham..... 52
 Accommodation 56

English Language requirements 60

Welcome to Nottingham Trent University (NTU)

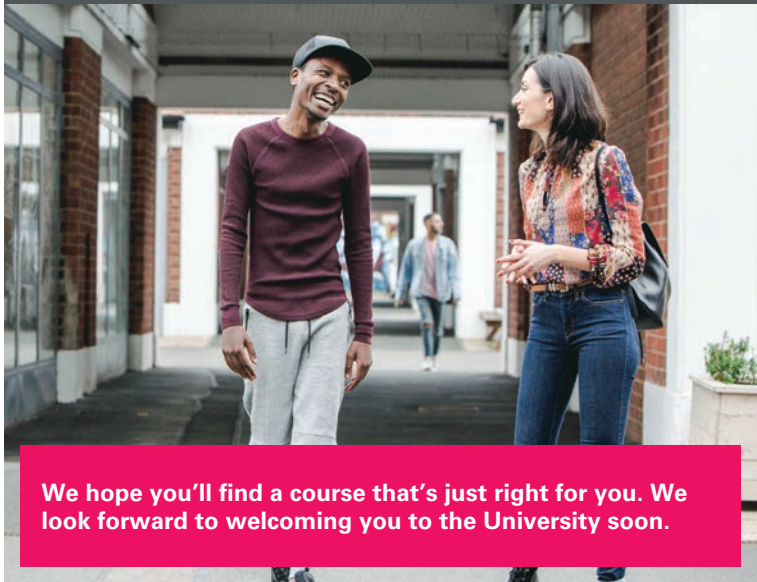


Choosing where to study is a life-changing decision – we're honoured that you're interested in studying with us.

At NTU you'll be part of a community of students and staff from over 160 countries around the world. Nottingham is a welcoming city and we know you'll make friends for life here.

It's a great time to join us – this guide will show you why we're one of the most popular universities in the UK. You'll also find information about our:

- courses
- campuses and facilities
- academic schools
- scholarships
- entry requirements and how to apply.



We hope you'll find a course that's just right for you. We look forward to welcoming you to the University soon.

A great place for you to study

We're really proud of our statistics and the impressive awards we've won in recent years. And what could they mean for you, as a new student here?

97%

of our graduates
are in employment or further
study just six months after
graduating.

DLHE 2016/17



University of the Year
2019
The Guardian
University Awards 2019

Modern
University of the Year
2018
THE SUNDAY TIMES
THE SUNDAY TIMES

University of the Year
2017
THE AWARDS
2017

You'll be taught by
experienced, expert teachers
at a university rated Gold
for outstanding teaching
quality.

TEF Gold Teaching
Excellence
Framework

Visit [ntu.ac.uk/stories](https://www.ntu.ac.uk/stories) for what our students say about NTU.

You'll be living in a popular and cosmopolitan UK city.

With a top 10 UK ranking for the number of our students on work placements, you know you'll be joining a university that makes practical experience a priority.

HESA 2017/18

Enjoy using first-class facilities at a university that's invested over £450m in our campuses in the last 15 years.

You'll be joining a truly international community at NTU, with students and staff from over 160 countries.



Your future

NTU graduates get jobs. Our strong links with industry help us understand exactly what employers need. Your NTU experience will be packed with opportunities all designed to help you graduate with a CV or resumé that may give you a real advantage.

Employability

Our Employability team offers specialist careers advice and training sessions in job-hunting skills you'll need. This could include how to write a good CV, the job application process and how to give a good interview.

We can also help you develop your career ideas, and you can attend employer workshops, practice interviews, assessment centres and careers fairs, all of which give you the opportunity to speak to global employers. And did you know, our support continues *after* you graduate?

Every NTU course has opportunities to gain practical skills and experience.

- **One-year work placement**

Apply for one-year paid placements with a company or organisation. These may be in Nottingham, in another part of the UK, or in another country.

- **Shorter work placements and projects**

Short internships or work-based consultancy projects with a company are an important part of many of our courses. They range from 30 hours to 12 weeks.

- **Professional, transferable skills**

You'll be learning planning, communication, analysis, creativity, cooperation and problem-solving skills – no matter what NTU course you do. These are skills that'll really help you make the journey between studying and working.

Visit [ntu.ac.uk/job-ready](https://www.ntu.ac.uk/job-ready) to find out more.

Completing a work placement can have lots of benefits. It can build your confidence, improve your CV and help you stand out to future employers.



Course list

We offer over 500 full-time courses, all offering opportunities for practical experience. Most undergraduate courses and many of our postgraduate courses include an option to apply for a work placement.

Most courses are listed here and postgraduate work placement options are marked with a ✓ in this list. We also offer:

- courses starting in January (page 18)
- pre-sessional English (page 21)

Undergraduate courses

Bachelors – BA, BSc, LLB. These take 3 years, or 4 years with a work placement.

Postgraduate courses

Masters – MA, MSc, LLM. These take 1 year, or 2 years with a work placement.

You may be nervous about what University life is going to be like, and how your studies may be affected by social distancing measures, for example. Things are going to be a little different, yes. But there's plenty going on to give you the best possible NTU experience while helping you stay safe.

Visit [ntu.ac.uk/your-experience](https://www.ntu.ac.uk/your-experience) for the latest information about student life on campus.

Visit [ntu.ac.uk/courses](https://www.ntu.ac.uk/courses) to view course modules.

Accounting, finance and economics

- MSc Economics ✓
 - MSc Economics, Banking and Finance ✓
 - MSc Finance ✓
 - MSc Finance and Accounting ✓
 - MSc Finance and Investment Banking ✓
 - MSc FinTech and Financial Markets
-
- BA (Hons) Accounting and Finance
 - BA (Hons) Economics
 - BA (Hons) Economics with Business
 - BA (Hons) Economics with International Finance and Banking

Animal, equine and wildlife

- MSc / MRes Animal Health and Welfare
 - MSc / MRes Biodiversity Conservation
 - MSc / MRes Endangered Species Recovery and Conservation
 - MSc / MRes Equine Performance, Health and Welfare
-
- BSc (Hons) Animal Biology
 - BSc (Hons) Zoo Biology
 - BSc (Hons) Equine Behaviour, Health and Welfare
 - BSc (Hons) Equine Sports Science
 - BSc (Hons) Wildlife Conservation

Architecture and civil engineering

- MArch Architecture
 - MA Interior Architecture and Design
 - MSc Digital Architecture and Construction
 - MSc Civil Engineering
 - MSc Structural Engineering with Materials
 - MSc Structural Engineering with Management
-
- MEng (Hons) Civil Engineering Design and Construction
-
- BA (Hons) Interior Architecture and Design
 - BArch (Hons) Architecture
 - BSc (Hons) Architectural Technology
 - BEng (Hons) Civil Engineering
 - BSc (Hons) Civil Engineering



Art and design

- MA Fashion Design
 - MA Fashion Knitwear Design
 - MA Textile Design Innovation
 - MA Culture, Style and Fashion
 - MA Fashion and Creative Pattern Cutting (**NEW**)
 - MA International Fashion Management
 - MA Fashion Marketing
 - MA Fashion Communications
 - MA Luxury Fashion Brand Management
 - MA Animation
 - MA Graphic Design
 - MA Branding and Identity
 - MA Illustration
 - MA Photography
 - MA Commercial Photography
 - MFA Fine Art
 - MA Design: Products and Furniture
 - MSc Design: Products and Technology
-
- BA (Hons) Fashion Design
 - BA (Hons) Fashion Knitwear Design and Knitted Textiles
 - BA (Hons) Textile Design
 - BA (Hons) Fashion Communication and Promotion
 - BA (Hons) Fashion Marketing and Branding
 - BA (Hons) Fashion Management

- BA (Hons) International Fashion Business (one-year top-up)
- BA (Hons) Fine Art
- BA (Hons) Design for Stage and Screen (Costume Design and Construction)
- BA (Hons) Graphic Design
- BA (Hons) Illustration (**NEW**)
- BA (Hons) Photography
- BA (Hons) Animation
- BA (Hons) Filmmaking
- BA (Hons) Furniture and Product Design
- BA (Hons) Product Design
- BSc (Hons) Product Design



Visit [ntu.ac.uk/courses](https://www.ntu.ac.uk/courses) to view course modules.

Business, management and marketing

- MSc International Business
 - MSc International Business (Dual Degree) ✓
 - MSc Human Resource Management ✓
 - MSc Advertising and Marketing Communications ✓
 - MSc Digital Marketing ✓
 - MSc Marketing ✓
 - MSc Marketing and Brand Management ✓
 - MSc Marketing and Data Analytics ✓ (NEW)
 - MSc Strategic Marketing Leadership ✓
 - MSc Project Management ✓
 - MSc Management ✓
 - MSc Management and Finance ✓
 - MSc Management and Marketing ✓
 - MSc Management and International Business ✓
 - MSc Management and Global Supply Chain Management ✓
 - MSc Management and Business Analytics ✓
 - MSc Innovation Management and Entrepreneurship
 - MBA Master of Business Administration ✓
 - MBA Master of Business Administration (Digital Marketing) ✓
 - MBA Master of Business Administration (Finance) ✓
 - MBA Master of Business Administration (Global Supply Chain Management) ✓
-
- BA (Hons) Business
 - BA (Hons) Business Management (Accelerated)
 - BA (Hons) Business Management and Accounting and Finance
 - BA (Hons) Business Management and Economics
 - BA (Hons) Business Management and Entrepreneurship
 - BA (Hons) Business Management and Human Resources
 - BA (Hons) Business Management and Marketing
 - BA (Hons) International Business
 - BA (Hons) International Business with Spanish
 - BA (Hons) International Business with French
 - BSc (Hons) Management
 - BA (Hons) Marketing

Computing, engineering, maths and other technologies

- MSc Cloud and Enterprise Computing ✓
- MSc Computer Science ✓
- MSc Computing Systems ✓
- MSc Data Science ✓ (NEW)
- MSc Engineering (Cybernetics and Communications) ✓
- MSc Engineering (Electronics) ✓
- MSc IT Security ✓
- MRes Mathematical Sciences
- MSc Engineering Management ✓

-
- BEng (Hons) / MEng (Hons) / with Foundation Year Biomedical Engineering
 - BEng (Hons) / MEng (Hons) / with Foundation Year Electronic and Electrical Engineering
 - BEng (Hons) / MEng (Hons) / with Foundation Year Sport Engineering
 - BEng (Hons) / MEng (Hons) / with Foundation Year Mechanical Engineering
 - BSc (Hons) Data Science
 - BSc (Hons) / MMath (Hons) Mathematics
 - BSc (Hons) with foundation year Mathematics with Statistics (NEW)
 - BSc (Hons) Financial Mathematics
 - BSc (Hons) Computer Science and Mathematics

- BSc (Hons) / MComp (Hons) Computer Science
- BSc (Hons) / MComp (Hons) Computer Systems Engineering
- BSc (Hons) Computer Science (Games Technology)
- BSc (Hons) Computer Systems (Networks)
- BSc (Hons) Computer Systems (Cyber Security)
- BSc (Hons) Information Systems
- BSc (Hons) Computing
- BSc (Hons) Software Engineering

English, history and philosophy

- MA Creative Writing
- MRes English Literary Research
- MA Museum and Heritage Development
- MA Philosophy (by research)
- MA Holocaust and Genocide (by research)
- MA History

-
- BA (Hons) English
 - BA (Hons) Creative Writing
 - BA (Hons) Humanities Joint Honours (areas include English, History, Philosophy, Linguistics, TESOL, etc.)
 - BA (Hons) History

Visit [ntu.ac.uk/courses](https://www.ntu.ac.uk/courses) to view course modules.

Geography, horticulture and environment

- BSc (Hons) Agriculture
- BSc (Hons) Ecology and Conservation
- BSc (Hons) Environmental Science
- BSc (Hons) Food Science and Technology
- BSc (Hons) Geography
- BSc (Hons) Geography (Physical)
- BSc (Hons) Horticulture (one-year top-up)

Languages and linguistics

- MA English Language Teaching
- MA TESOL (Teaching English to Speakers of Other Languages)
- MA Linguistics (by research)
- BA (Hons) Humanities joint honours (areas include English, linguistics, TESOL, etc).



Law, criminology and justice

- LLM Health Law and Ethics
 - LLM Human Rights and Justice
 - LLM Intellectual Property Law
 - LLM Sports Law
 - LLM Law (General)
 - LLM International Financial Law
 - LLM Legal Practice Course
 - LLM Legal Tech (**NEW**) (subject to validation)
 - Barristers Training Course (BTC)
 - Graduate Diploma in Law
 - MA Criminology
 - MSc International Law Enforcement *
 - MSc Policing Leadership *
-
- LLB (Hons) Business Law
 - LLB (Hons) International Law
 - LLB (Hons) Law Senior Status
 - LLB (Hons) Law with Business
 - LLB (Hons) Law with Criminology
 - LLB (Hons) Law with Psychology
 - BA (Hons) Criminology
 - BA (Hons) Professional Policing
 - BA (Hons) Youth Justice

Media, journalism and communication

- MA Broadcast Journalism
 - MA Documentary Journalism
 - MA Magazine Journalism
 - MA Media and Globalisation
 - MA News Journalism
-
- BA (Hons) Broadcast Journalism
 - BA (Hons) Journalism
 - BA (Hons) Media Communications and Culture
 - BA (Hons) Media Production
 - BA (Hons) Humanities Joint Honours (areas include English, Media, Film and TV, Communication and Society, etc.)

Politics and international studies

- MA Politics
 - MA International Development
 - MA Security Studies
 - MA International Relations and Security
 - MSc Public Policy
 - MSc Politics and Public Policy
-
- BA (Hons) Politics and International Relations
 - BA (Hons) Politics
 - BA (Hons) International Relations
 - BA (Hons) Politics and Security Studies
 - BA (Hons) Politics and Public Policy



Visit [ntu.ac.uk/courses](https://www.ntu.ac.uk/courses) to view course modules.



Property, construction and surveying

- MSc Construction Management
 - MSc Project Management (Construction)
 - MSc Quantity Surveying
 - MSc Building Surveying
 - MSc International Real Estate Investment and Finance
 - MSc Property Development and Planning
 - MSc Real Estate
-
- BSc (Hons) Building Surveying
 - BSc (Hons) Construction Management
 - BSc (Hons) Property Development and Planning
 - BSc (Hons) Property Finance and Investment
 - BSc (Hons) Real Estate
 - BSc (Hons) Quantity Surveying and Commercial Management

Psychology, sociology, health and social care

- MSc Cyberpsychology
 - MSc Applied Child Psychology
 - MSc / MRes Psychological Research Methods
 - MSc Psychology in Clinical Practice
 - MSc Psychological Wellbeing and Mental Health
 - MSc Forensic Mental Health
 - MSc Forensic Psychology
 - MA Social Work*
 - MA Sociology
 - MSc Psychology
 - MA Public Health
-
- BA (Hons) Health and Social Care
 - BSc (Hons) Psychology, including specialist routes of Cognitive and Neuroscience and Social and Cultural Psychology
 - BSc (Hons) Psychology with Criminology
 - BSc (Hons) Psychology with Sociology
 - BA (Hons) Social Work
 - BA (Hons) Sociology
 - BSc (Hons) Psychology with Counselling
 - BSc (Hons) Psychology (Mental Health)
 - BSc (Hons) Psychology (Forensic Psychology)
 - BSc (Hons) Psychology (Educational Development Psychology)

Sciences, including sport science

- MRes Advanced Materials Chemistry
 - MRes Analytical Chemistry
 - MRes Biomechanics
 - MSc Biomedical Science ✓
 - MSc ✓ / MRes Biotechnology
 - MRes Cancer Biology
 - MRes Cell Biology
 - MRes Chemistry
 - MSc Chemistry / MSc Chemistry (Professional Practice) ✓
 - MSc Forensic Science
 - MRes Molecular Biology
 - MSc ✓ / MRes Molecular Microbiology
 - MSc ✓ / MRes Pharmacology
 - MSc ✓ / MRes Neuropharmacology
 - MSc Molecular Cell Biology ✓
 - MRes Pharmaceutical Analysis
 - MRes Pharmaceutical and Medicinal Science
 - MRes Medical Imaging
 - MSc / MRes Physics
 - MRes Performance Analysis
 - MRes Sport and Exercise Psychology
 - MRes Exercise Physiology
-
- BSc (Hons) Applied Physics
 - BSc (Hons) Biomedical Science
 - BSc (Hons) Biological Sciences
 - BSc (Hons) / MBIol (Hons) Biochemistry
 - BSc (Hons) / MBIol (Hons) Microbiology
 - BSc (Hons) / MBIol (Hons) Pharmacology
 - BSc (Hons) / MChem (Hons) Chemistry
 - BSc (Hons) Medicinal Chemistry
 - BSc (Hons) / MSci (Hons) Forensic Science
 - BSc (Hons) / MSci (Hons) Physics
 - BSc (Hons) Physics with Nuclear Technology
 - BSc (Hons) Physics with Astrophysics
 - BSc (Hons) with foundation year Physics and Mathematics
 - BSc (Hons) with foundation year Sport Science and Mathematics
 - BSc (Hons) Sport Science and Coaching
 - BSc (Hons) Sport Science and Management
 - BSc (Hons) Sport and Exercise Science
 - BSc (Hons) Exercise, Nutrition and Health

Nursing and Paramedicine

- BSc (Hons) Nursing (Adult)
- BSc (Hons) Nursing (Mental Health)
- BSc (Hons) Paramedic Science
- MSc (Hons) Paramedic Science*

Visit [ntu.ac.uk/courses](https://www.ntu.ac.uk/courses) to view course modules.

Teacher training, education, and childhood and youth studies

- MA Career Development
- MA Education
- MA Education Leadership and Management
- MA Special and Inclusive Education
- BA (Hons) Childhood (areas include Learning and Development, Psychology, Special Educational Needs and Inclusion)
- BA (Hons) Early Years
- BA (Hons) Education (areas include Early Years, Psychology, Special Educational Needs and Inclusion)
- BA (Hons) Primary Education
- BA (Hons) Youth Studies

*may not be suitable for applicants requiring a student visa, please check the course web page.



January start courses



Visit ntu.ac.uk/january to find out more.



Interested in starting at NTU in January? We offer a wide range of postgraduate courses with a January start, some offering a work placement option (marked with a ✓ in the list).

You'll find a selection of these on this page, please check our website at ntu.ac.uk/january for the most up-to-date information on January courses.



“The course is very informative and educative. I really enjoy that all the modules are highly practical instead of just being theoretical.”

Defna David, India
MSc Marketing, January 2020

We run an airport pick-up and transfer service from Heathrow and Birmingham airports for our January starters, as well as for those starting in September. We also run a full programme of welcome events for all students.

Business, management and marketing

- MSc Management
- MSc Management and International Business
- MSc Marketing
- MSc Marketing and Brand Management
- Online Master of Business Administration
- Online Master of Business Administration (Data Analytics)

Computing and Engineering

- MSc Engineering Management ✓
- MSc Engineering (Cybernetics and Communications) ✓
- MSc Engineering (Electronics) ✓
- MSc IT Security ✓

We offer flexible accommodation contracts – perfect if you're starting in January.

Sciences

- MSc Biomedical Science ✓
- MSc Pharmacology ✓
- MSc Molecular Cell Biology ✓
- MSc Molecular Microbiology ✓
- MSc Biotechnology ✓
- MSc Chemistry
- MSc Chemistry Professional Practice ✓
- MRes Analytical Chemistry
- MRes Pharmaceutical Analysis
- MRes Pharmaceutical and Medicinal Science
- MRes Chemistry
- MRes Advanced Materials Chemistry
- MSc Neuropharmacology ✓
- MSc Biomedical Science (flexible learning)
- MRes Cancer Biology
- MRes Cell Biology
- MRes Molecular Biology
- MRes Pharmacology
- MRes Molecular Microbiology
- MRes Neuropharmacology
- MRes Biotechnology
- MRes Medical Imaging

Visit [ntu.ac.uk/january](https://www.ntu.ac.uk/january) to find out more.



Pre-sessional English for Academic Purposes (PEAP)

If you need help achieving our English language requirements, we may offer you a place on the condition that you successfully complete a PEAP course at the University before your course begins.

The length and cost of your PEAP course will depend on your current level of English. Our courses range from 6 to 20 weeks.

You can get free language support classes throughout your time as a postgraduate or undergraduate student here, including one-to-one help with writing.

International scholarships

We offer many postgraduate scholarships to international students who have offers to study at NTU. These are highly prestigious, competitive awards, worth up to half of your tuition fee. Our scholars have gone on to become strong and highly valued ambassadors for the University.

If you are progressing from one of our partner universities, you are eligible for either the NTU Scholarship or the partner progression discount. All scholarships available are listed on our website, with application advice and deadlines.



“How did I feel when I won an NTU scholarship?”

It was one of the best feelings I’ve ever experienced.

I felt very motivated as it involved a fee reduction, and my hard work and efforts were recognised.”

Mohini Raj, India



“I felt really special when I was awarded the European Scholarship. I just felt like I was doing something right and it gave me the confidence boost I needed.

I had doubts in myself and my skills but winning a scholarship proved that those thoughts were unnecessary.”

Kirkke Poldsalu, Estonia

Visit ntu.ac.uk/internationalscholarships to find out more.



"I felt very happy, excited, and blessed when I found out I got a scholarship."

Chanisaraa Sroitongrada,
Thailand



"A scholarship is an opportunity for you to make yourself stand out from the crowd."

Azad Urusha, India
MSc Finance and Investment
Banking

Last year we awarded
590 scholarships
to students from over
85 countries.



"Yes, a scholarship is a fee discount but it's so much more than that – you become part of a community."

Khadija Twumasi, Ghana
LLM Health Law and Ethics

Benefits of an NTU scholarship



ntu.ac.uk/internationalscholarships

A scholarship gives you many advantages, including:

- a formal recognition of your achievements;
- a reduction on your tuition fees;
- access to a new friendly community for networking and socialising.

Application advice

You'll need an offer to study at NTU in order to apply, and remember to:

- be yourself – this is all about you;
- spend good time on your application;
- express your interests and your achievements;
- believe in yourself – nobody thinks they are good enough until they apply.



"For me, a scholarship is more about the value of the education I get. A lot of people around the world do not have that chance.

I remember phoning my mum and dad – it was my father's dream for me to study abroad – both were screaming: 'Yeah! He got the scholarship!' "

Rezhayar Hamad Ameen, Iraq





Living Costs

Living in Nottingham as a student can be cheaper than in bigger UK cities, such as London, Birmingham or Manchester.

There are many ways to save money while you're here – using your student card for discounts in shops and on transport, for example. And some of our international students choose to work part-time to get some extra income (and gain valuable experience).

Your daily, weekly and monthly costs will mostly be for your accommodation, food, entertainment and bills. It's important to be prepared and to budget carefully – you'll find more advice on our website.

Visit [ntu.ac.uk/managing-money](https://www.ntu.ac.uk/managing-money) for more info.

Approximate costs of studying in Nottingham per year

Accommodation:	£3,120 – £7,680
Food shopping at supermarket:	£2,080
Student society membership:	£4 – £15
Gym membership:	£80
Books, study resources and printing:	£100 – £150



Getting to know us

We have eight Academic Schools located over four campuses. As an international student, you'll most probably be studying at our City, Clifton or Brackenhurst campus – it depends on your subject.

Each school has a friendly student community and you can find out more about them on pages 36-51.



Take a virtual tour
around the University
campuses at
virtualtour.ntu.ac.uk

City Campus

A cosmopolitan, bustling campus right in the city centre. Only five minutes' walk to the shops and all the excitement of a busy student city. Includes:

- Nottingham Business School
- School of Art & Design
- School of Architecture, Design and the Built Environment
- Nottingham Law School
- School of Social Sciences
- Centre for Broadcasting & Journalism
- Nottingham Language Centre (pre-sessional English)





Clifton Campus

A friendly, vibrant student village with all the facilities you need in one place. Just six kilometres from the centre of Nottingham, with a bus service to the City Campus every 10 minutes. Includes:

- School of Arts and Humanities
- School of Science and Technology
- Nottingham Institute of Education



Brackenhurst Campus

A beautiful campus in the countryside, about 45 minutes' drive from Nottingham with a regular bus service. If you're with the School of Animal, Rural and Environmental Sciences, you'll be studying here.

Facilities and resources

We've invested over £450 million in our facilities and campuses in the last 15 years and we continue to invest heavily. You'll enjoy first-class learning and teaching facilities at NTU.

You'll be studying with one of our Academic Schools, and you'll have access to a huge range of facilities and resources for your specialist subject area.

Here are just some of the other facilities you'll enjoy.

Award-winning libraries

Access to over 650,000 electronic books and journals and approximately 300,000 printed books, open 24 / 7 during term time.



Your Students' Union

An incredible range of venues, societies, sports clubs, events and initiatives on all campuses for you to enjoy with your fellow students.

Visit [ntu.ac.uk/facilities](https://www.ntu.ac.uk/facilities) to find out more.

Amazing sport facilities including 100-station gyms, fitness studios, outdoor sports pitches, an indoor tennis centre, a sports therapy suite, sports halls, a dance studio, and a 10m climbing wall.



IT facilities

Loan laptops, group and individual study spaces, thousands of computers, 24-hour access, and specialist course-related software.

- Global Lounges for international social events and activities.
- Prayer rooms and other faith facilities.
- Green spaces outside on our campuses.
- Dedicated music practice space for all abilities and musical interests.



Learning with the best

Experienced, expert teachers

You'll enjoy the highest standards of teaching during your studies. Our lecturers have extensive experience in industry, research and the professions, leading to national recognition that our teaching is of the highest quality in the UK.

You'll learn so much about the theory and the practice of your subject. You'll also benefit from inspirational guest lecturers and speakers who'll bring your subject to life.

Whatever course you do, you'll find new and exciting ideas. And you'll develop your confidence further by getting practical experience.



Did you know we're also a top 20 UK university in many subjects?

• Top 5

accounting and finance; agriculture, forestry and food; journalism; publishing; public relations.

• Top 10

fashion and textiles; building, town and country planning; economics; psychology.

• Top 20

biosciences; business management and marketing; chemistry; drama and dance; design and crafts; geography and environmental studies; physics; sports science.

Selection of rankings from The Guardian University Guide 2020.

Visit [ntu.ac.uk/tef](https://www.ntu.ac.uk/tef) to find out more.



You are valued

Our teachers really value international students like you, for the contributions you make, and for the challenges, fresh ideas and new perspectives you bring to our courses.





World-class research

We're delivering groundbreaking research. If you're planning to do research with us, you'll play a key part. Our work creates innovative solutions to global challenges ranging from cancer to climate change.

With 50 partner academic institutions across 40 countries, we achieve many of our breakthroughs through collaboration with other universities, industrial leaders and professional bodies worldwide.

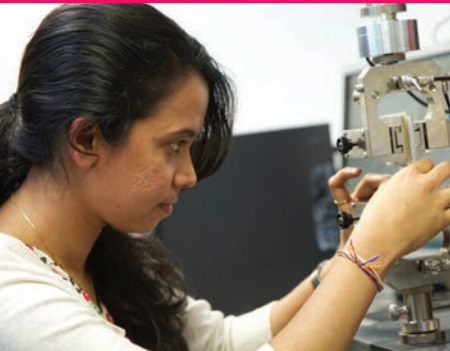
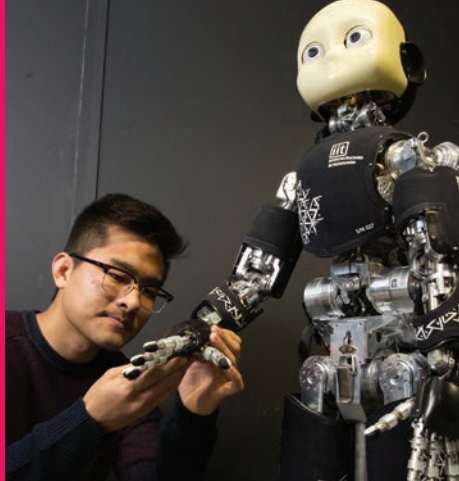
We also command global respect for our research, with 90% being classed as world-leading, internationally excellent or internationally recognised (Research Excellence Framework 2014).

Tackling issues that influence the real world, all of our research findings feed back into our courses. This means that your learning is informed by the latest thinking and discoveries.

Visit ntu.ac.uk/research to explore further.

Our research areas

- Health and Wellbeing
- Medical Technologies and Advanced Materials
- Safety and Security of Citizens and Society
- Sustainable Futures
- Global Heritage



School of Art & Design

City Campus

Join a community that is truly international, with staff and students working together to share knowledge, skills and culture.



We've been teaching art and design since 1843 – now we're one of the UK's most established, well-known and respected creative universities.

Visit ntu.ac.uk/art for more on this subject area.



Lydia Jackson, BA (Hons) Fashion Design

You'll have the opportunity to participate in live projects, competitions and work placements, many with global organisations such as Apple, Paul Smith, Hallmark, John Lewis, Ted Baker, ASOS and L'Oreal.

You'll have access to state-of-the-art facilities including:

- studios and workshops for art, design, fashion and photography
- electronic garment and knitwear technology
- digital textile printing and digital loom and embroidery equipment
- CAD systems
- image and sound-editing studios.

- **Among the top 10% of art and design providers in the QS World University Rankings.**

- Excellent links with industry.
- Graduate degree show for final year students to display their work to the public.



Ming-Shan Wang, Taiwan

MA Graphic Design

"I think Nottingham is a great place to study, as the city isn't too big or too small. You can find everything you need here. I have also learned how to push the boundaries of visual design, through trial and experimentation, and testing it on audiences. The course will definitely help me a lot in my future career."

School of Architecture, Design and the Built Environment

City Campus

Our industry-focused courses combine theory, expert insight and experience, as well as professional accreditation.

Professional accreditations



Visit ntu.ac.uk/adbe for more on this subject area.



Daniel Farnsworth, BArch (Hons)
Architecture

You'll be learning from academics who are involved in world-leading research and connected with industry and professional bodies.

You'll have access to state-of-the-art facilities and workshops, including:

- a model-making studio
- metal work and timber machining workshops
- structural testing areas
- extensive laboratories in concrete, materials, soils and hydraulics
- creative and virtual technologies laboratory (including visualisation technologies)
- BIM, 3D modelling and rendering software.



Fiorentina Poh, Malaysia

BA (Hons) Interior Architecture and Design

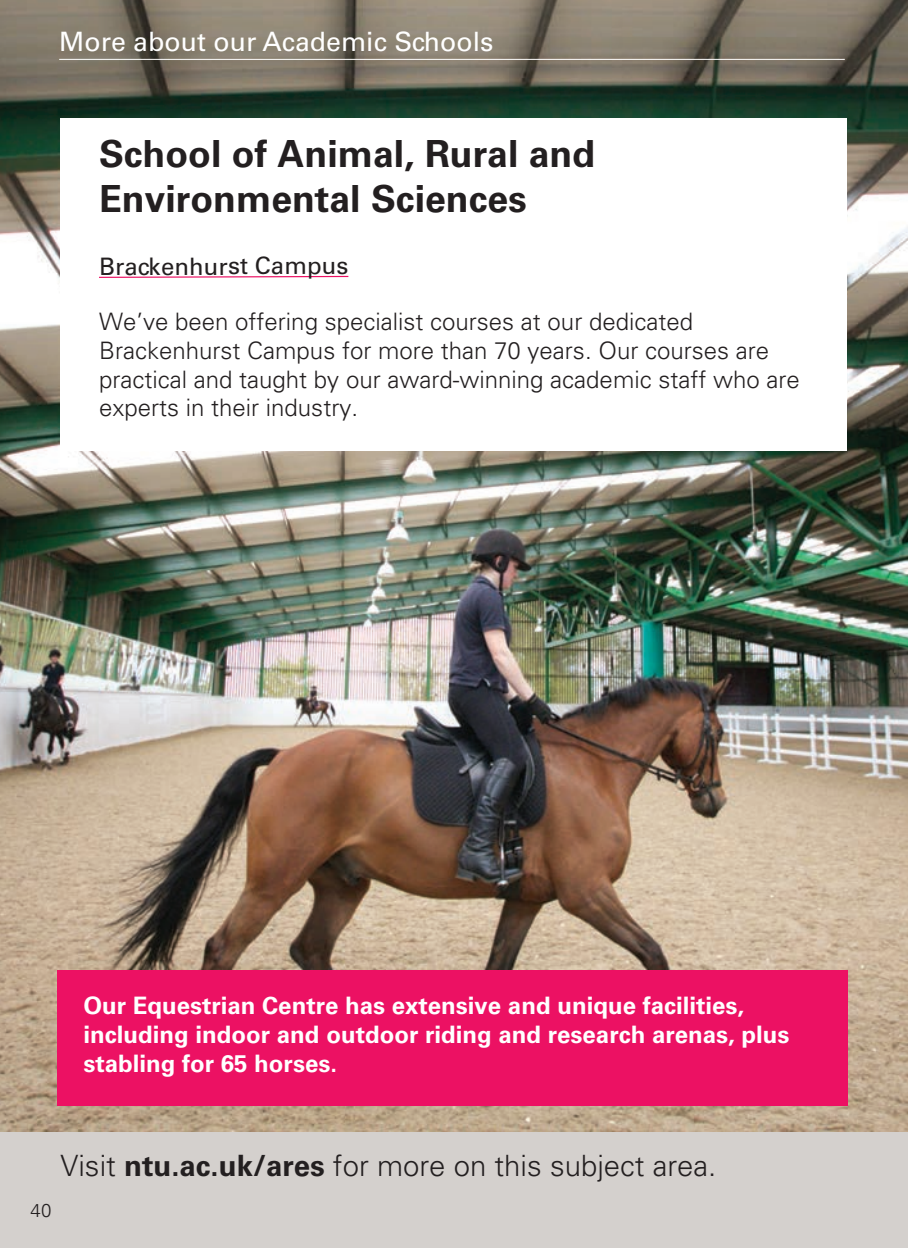
"NTU became my top choice when I found out that it offered so much employability support. Also, it is so diverse – there are so many international students here from different backgrounds."

- The Royal Institute of British Architects (RIBA) East Midlands office is on campus.
- Masters-level conversion courses.
- Work placements and live industry projects.

School of Animal, Rural and Environmental Sciences

Brackenhurst Campus

We've been offering specialist courses at our dedicated Brackenhurst Campus for more than 70 years. Our courses are practical and taught by our award-winning academic staff who are experts in their industry.

A photograph of a rider on a brown horse in an indoor riding arena. The rider is wearing a dark blue shirt, black riding pants, and a black helmet. The horse is in motion, possibly performing a dressage movement. The arena has a green metal frame and a white fence. Other riders and horses are visible in the background.

Our Equestrian Centre has extensive and unique facilities, including indoor and outdoor riding and research arenas, plus stabling for 65 horses.

Visit ntu.ac.uk/ares for more on this subject area.



We're located in a beautiful area of the countryside and we've invested over £20 million in state-of-the-art facilities and resources for our students. These include laboratories, an animal unit, our equestrian centre, and a veterinary nursing centre.



**Agne Cerniauskaite,
Lithuania**

**MRes / MSc Endangered
Species Recovery and
Conservation**

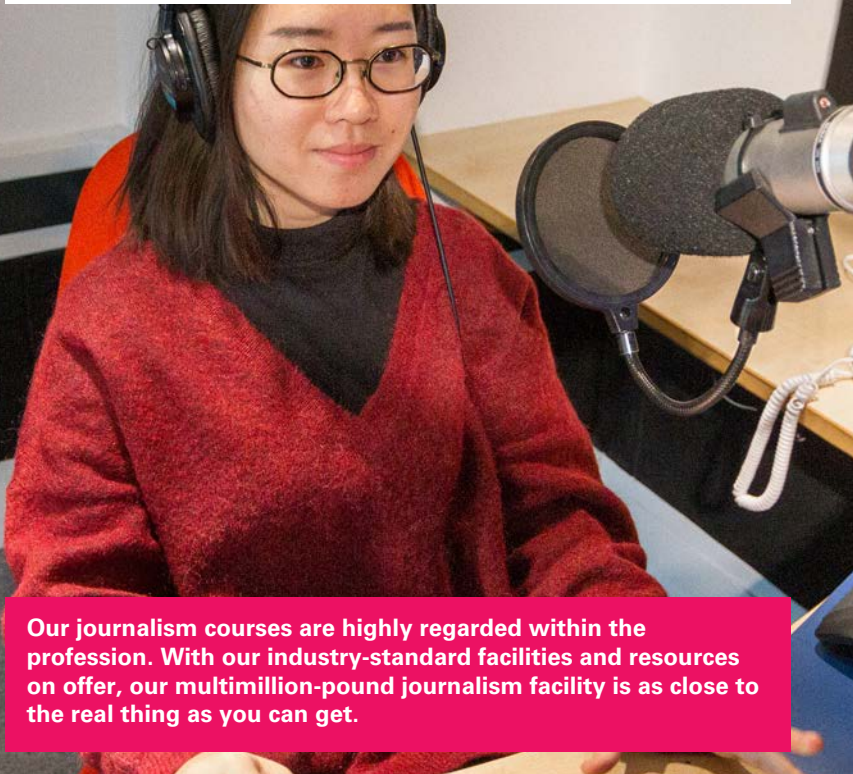
"I absolutely love that all the lecturers love their jobs and are teaching us with passion. They are all very friendly and the amount of help I've received has been exceptional."

- **Top five in the UK** for agriculture, forestry and food in *The Guardian* University Guide 2020.
- One of the leading centres in the UK for animal and environmental sciences.
- Stunning, idyllic campus.

School of Arts and Humanities

Clifton and City campuses

We can offer you dynamic courses, expert teaching, international opportunities and hands-on workplace training on all of our courses.



Our journalism courses are highly regarded within the profession. With our industry-standard facilities and resources on offer, our multimillion-pound journalism facility is as close to the real thing as you can get.

Visit ntu.ac.uk/hum for more on this subject area.

You'll be joining a truly diverse arts and humanities community here at NTU. You'll also benefit from our outstanding humanities facilities, including our dedicated Centre for Broadcasting & Journalism, open-access media facilities, and innovative teaching spaces.



Thang Nguyen, Vietnam

MA English Language Teaching

"What I love most is how challenging it is, so in terms of career development, I think it's the best preparation for the future. Also, the staff have been more than excellent. Our lecturers are so knowledgeable that I'm just in awe of their expertise."

- We have close links to local media organisations such as Notts TV and the Nottingham Post.
- Other partners include the National Trust, National Justice Museum and BBC.
- Work placements and live projects.

Nottingham Business School

City Campus

We're proud to be EQUIS and AACSB accredited – international benchmarks of excellence. We're ranked among the top 95 European business schools by the Financial Times, and our Masters in Management programmes are in the top 100 globally.



Professional accreditations



Visit ntu.ac.uk/nbs for more on this subject area.



Whatever course you study, we're committed to providing you with practical experience of your subject and an international perspective. This could be through a work placement or live consultancy project, for example.



Paula Andrea Gomez
Saldarriaga, Colombia

MBA Digital Marketing

"I had the opportunity to complete a consultancy project in a local business to review several of their processes. I suggested improvements in both time and cost efficiencies which the business is now looking to implement."

- **AACSB and EQUIS-accredited business school.**
- We are recognised as an exemplar by the United Nations Principles of Responsible Management Education (PRME) and proud to be a PRME Champion.
- Dedicated approach to personalised and experiential learning.
- Over 600 connections with businesses and industry.

Nottingham Law School

City Campus

We have an outstanding and long-established reputation for delivering excellent, modern legal education. It's been built through close relationships with the legal and other professions, our strength in legal research, and our excellent facilities.



Our award-winning Legal Advice Centre gives our students the chance to work with qualified solicitors on real-life cases with members of the public.

Visit ntu.ac.uk/law for more on this subject area.

Many of our staff are experienced lawyers, and some are still in practice.

All our courses offer you fantastic opportunities. Work placements, voluntary work, an international summer school and an annual Law Recruitment Fair are just a few of these.



Bianca Brasnoveanu, Italy

LLB International Law

“The largest influencing factor that determined my decision to study here was the unique variety of third year options that distinguished NTU from other universities. I never doubted my choice to study at NTU, and I was right not to.”

- We're proud of our reputation for excellence in the delivery of training for the Bar, and of our experienced teaching team that delivers such training.
- Our world-class facilities include a suite of courtrooms and mootng rooms.

School of Science and Technology

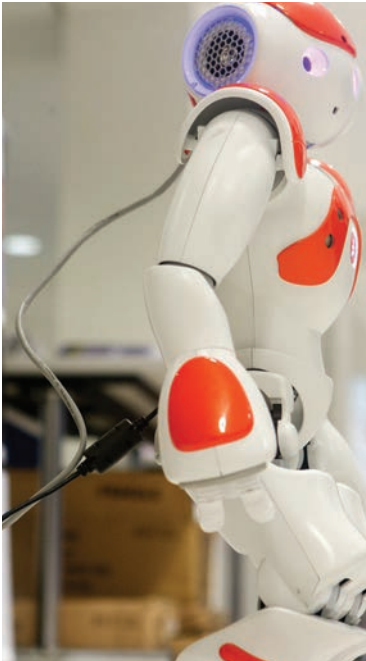
Clifton Campus

We're one of the UK's most pioneering science and technology schools. We teach our courses in an inspiring environment, which is innovative in its design and relevant to industry.

Professional accreditations include



Visit ntu.ac.uk/sat for more on this subject area.



The practical nature of our courses – and their professional accreditation – mean that you’re hands-on from the start, learning the skills employers are looking for.



**Krsna Das Thoondie,
Mauritius**

**MSc Interactive Media
Engineering**


“Studying at NTU was the best thing for me as the lecturers were very helpful and provided constant support. After my thesis, my lecturer encouraged me to write a conference paper, which was then accepted by the Computing Conference 2017 for publication.”

- One of the best teaching and research laboratories in the UK.
- Work placements on our undergraduate and many of our postgraduate courses.
- Access to our research-grade telescope and observatory.

School of Social Sciences, including Nottingham Institute of Education

City and Clifton campuses

We'll enable you to advance your career in an environment that fosters ambition, progress, innovation and leadership.



We have a large psychology department with over 90 academics, and some of our courses are accredited by the British Psychological Society (BPS).

Visit ntu.ac.uk/s3 for more on this subject area.

We take pride in our high-quality courses that are intellectually stimulating and relate directly to the needs of communities, society and professional practice.

You'll be taught by enthusiastic and knowledgeable staff who draw upon established expertise, research interests and professional experience.



Kamakshi Marwah, India

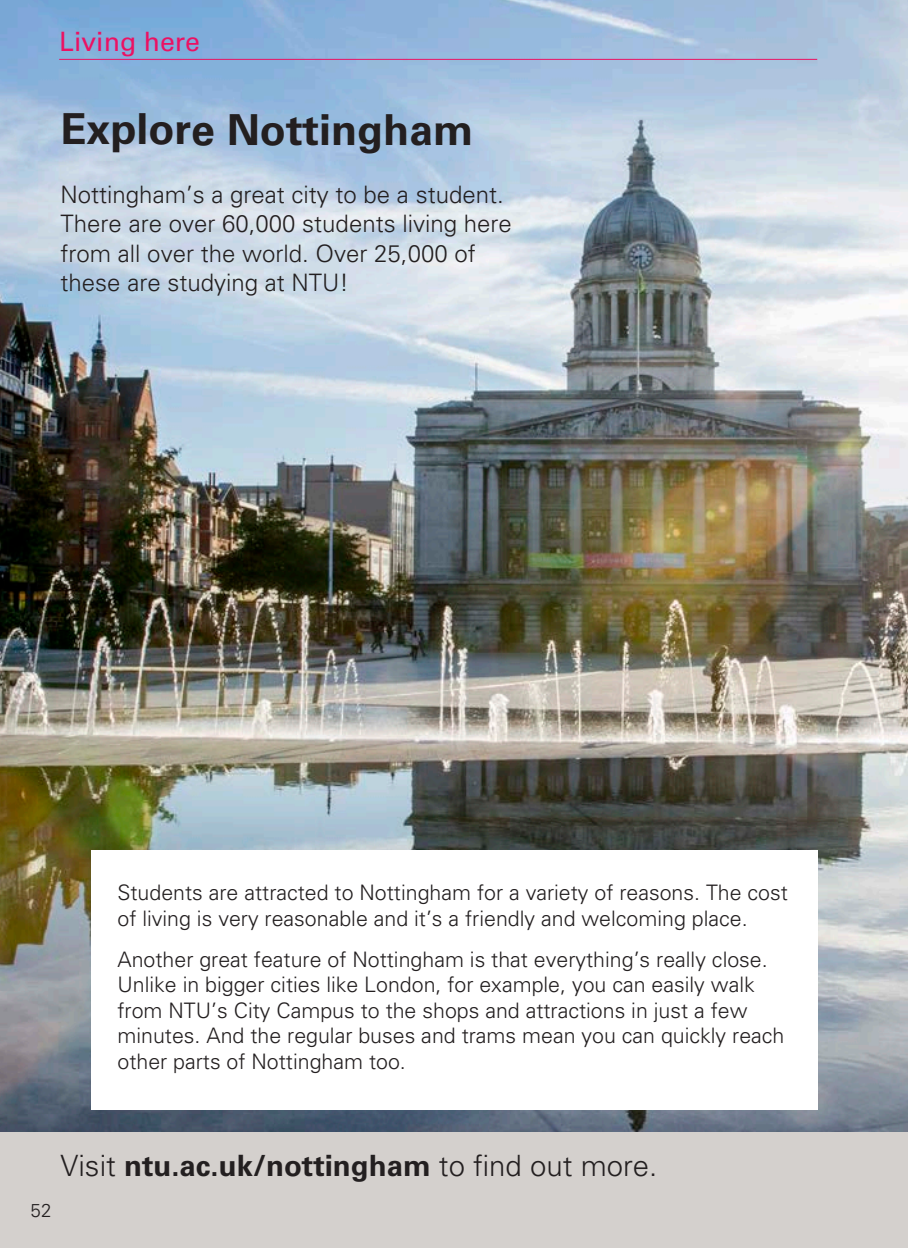
MSc Applied Child Psychology

"NTU has a prestigious reputation and offered many postgraduate courses in my area of interest. Postgraduate study has given a new dimension to my career plans. I have discovered new career opportunities where I can work and give back to society."

- Courses designed with professionals, and with public organisations.
- Many of our courses are accredited, validated or recognised by their associated professional body.

Explore Nottingham

Nottingham's a great city to be a student. There are over 60,000 students living here from all over the world. Over 25,000 of these are studying at NTU!



Students are attracted to Nottingham for a variety of reasons. The cost of living is very reasonable and it's a friendly and welcoming place.

Another great feature of Nottingham is that everything's really close. Unlike in bigger cities like London, for example, you can easily walk from NTU's City Campus to the shops and attractions in just a few minutes. And the regular buses and trams mean you can quickly reach other parts of Nottingham too.

Visit [ntu.ac.uk/nottingham](https://www.ntu.ac.uk/nottingham) to find out more.





Home to sport

Whatever sport you're interested in, as a participant or a spectator, you'll find it here. We're even home to world-famous sporting venues, such as the Trent Bridge cricket ground.



A breath of fresh air

Over 20% of Nottingham city is devoted to green spaces, such as public parks and gardens. You can easily go for a relaxing walk or cycle. You'll also have easy access to beautiful green countryside – the world-famous Peak District, for example, or the iconic Wollaton Hall Park.



Shopping heaven

If you like shopping, you'll love Nottingham! It's a big city shopping experience in a compact city centre.

From Primark and Zara, to Urban Outfitters and Dr Martens, you'll find high street brands for every budget. We've got iconic labels, too – Vivienne Westwood, Paul Smith and Diesel all have homes here, and our students love the independent vintage and charity shops in the Creative Quarter.



Visit ntu.ac.uk/nottingham to find out more.

Arts and culture

Whether you're into art galleries, music, cinema or theatre you'll find it all in this city.

New tastes

Worried about not liking British food? No problem! There's a great range of international food stores here in Nottingham – you can become an expert cook in no time. There are also a lot of supermarkets, restaurants, and tea and coffee shops. You'll be surprised, 'British' food is a mix of food from all over the world, and it's pretty good!



Your home away from home

Being happy where you're living is such an important part of your student experience. That's why we have a fantastic choice of accommodation available for you, and it's really important to start your research early.

University or private accommodation?

We offer a huge range of both University and private accommodation to suit every budget. University accommodation starts at approximately £95 per week and goes up to approximately £179 per week. All our accommodation is high quality, modern, and meets high safety standards.



While deciding what sort of accommodation you want, you may want to consider:

- sharing an apartment or a house with other students
- having an en-suite bathroom or shared facilities
- the cost, and whether utility bills (such as electricity and gas) are included
- the length of the contract (University contracts include the Christmas and Easter holidays).

Our Accommodation team is experienced in helping international students to find the right place. If you need support we'll be happy to help.

Contact accommodation@ntu.ac.uk if you need any advice on your options.



We can offer extra-flexible accommodation contracts, perfect if you're a Pre-sessional English (PEAP) student or if you're starting a Masters course in January.



We'll guarantee your accommodation if you book online and pay your accommodation deposit before 31 July.

Start house-hunting online

Our accommodation **books up fast**; it's really important to start looking as soon as you can and reserve as soon as our booking system opens. Our website is a great place to start your research. You can view what's available, find out more about the different locations and see what's included in the cost. You'll find a few examples on this page.



Byron residence
City Campus



Gill Street North
City Campus



Meridian court
City Campus



Sandby
City Campus



Peverell
Clifton Campus



New Hall
Clifton Campus



College Drive
Clifton Campus



Brackenhurst
Brackenhurst Campus



Bramley Cottages
Brackenhurst Campus

Visit ntu.ac.uk/accommodation to start your research.

Our student accommodation services team works very closely with **private accommodation providers in Nottingham**, to create more accommodation options for NTU students. Many of our international students take up these opportunities.



Visit ntu.ac.uk/private to view private accommodation.



English language requirements

English language entry requirements

If English isn't your first language, you'll need to show that your language skills are strong enough for intensive academic study.

You'll need to achieve the required grade in one of our accepted English language tests like IELTS, for example.

You'll find our English requirements at ntu.ac.uk/englishlanguage and a complete list of the English tests we accept.

Visit ntu.ac.uk/englishlanguage to find out more.



Visit [ntu.ac.uk/englishlanguage](https://www.ntu.ac.uk/englishlanguage) for advice.

International enquiries

Contact us

If you are studying at an NTU partner university, please get in touch so we can advise you on the appropriate application process.

Email: ntuglobal@ntu.ac.uk



This information can be made available in alternative formats.

Please note that whilst the University has taken all reasonable steps to ensure the accuracy of the content within this brochure at the time of printing, the University reserves the right to remove, vary or amend the content of the brochure at any time. For avoidance of doubt, the information provided within the content of this brochure is for guidance purposes.

© Nottingham Trent University and may not be reproduced or transmitted in any form in whole or in part without the prior written consent of Nottingham Trent University. © Nottingham Trent University and may not be reproduced or transmitted in any form in whole or in part without the prior written consent of Nottingham Trent University.

