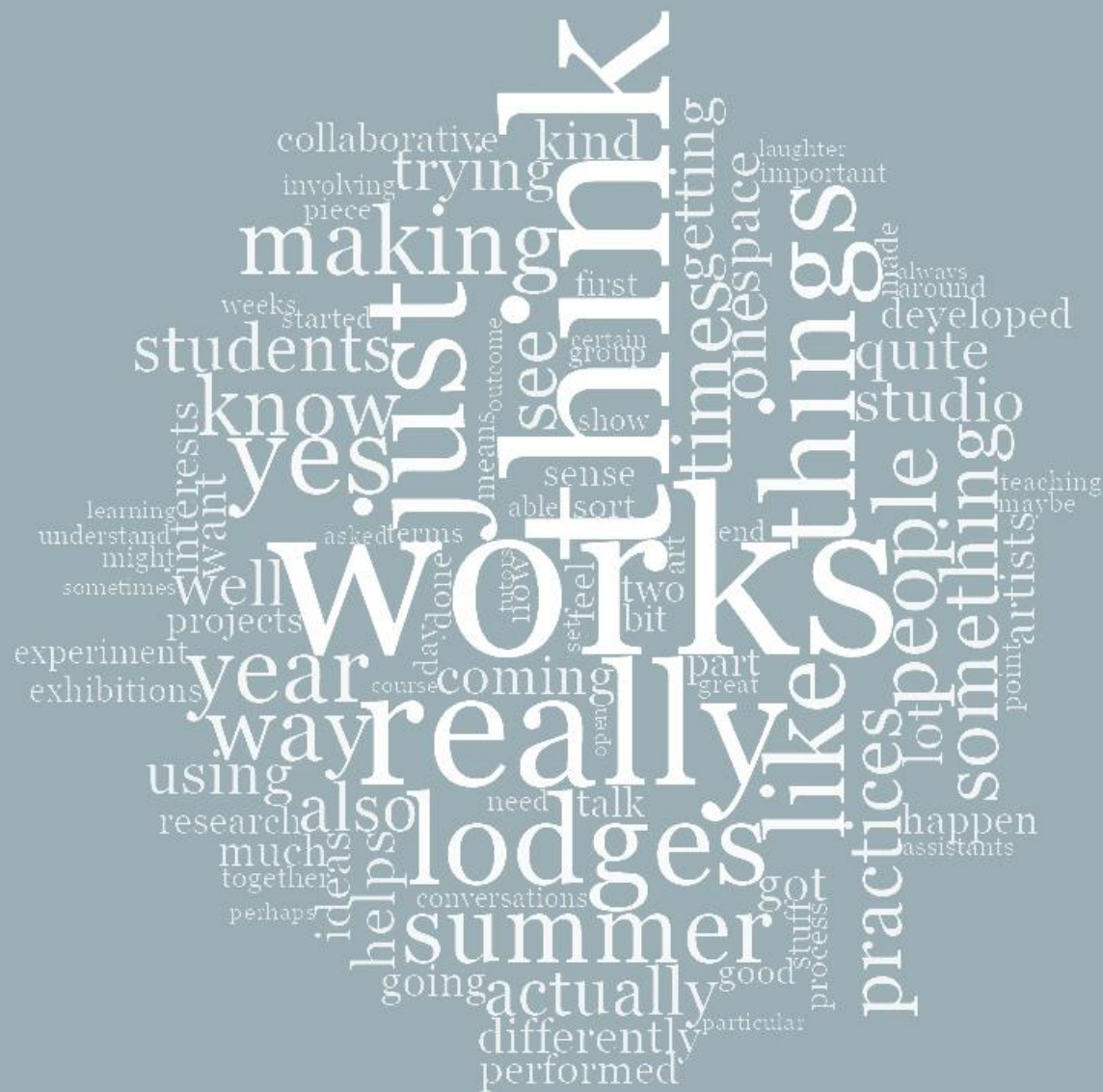


*Summer Lodge:
Flattening the hierarchy*

Danica Maier

Associate Professor of Fine Art,
Nottingham Trent University



Summer Lodge Word cloud, Based on word frequency from interviews during a 6-month research project.

community, (non)-outcome, experimentation,
research informed teaching, research through
practice, students as resource, students
transformation, bounded space, tutor-artist role

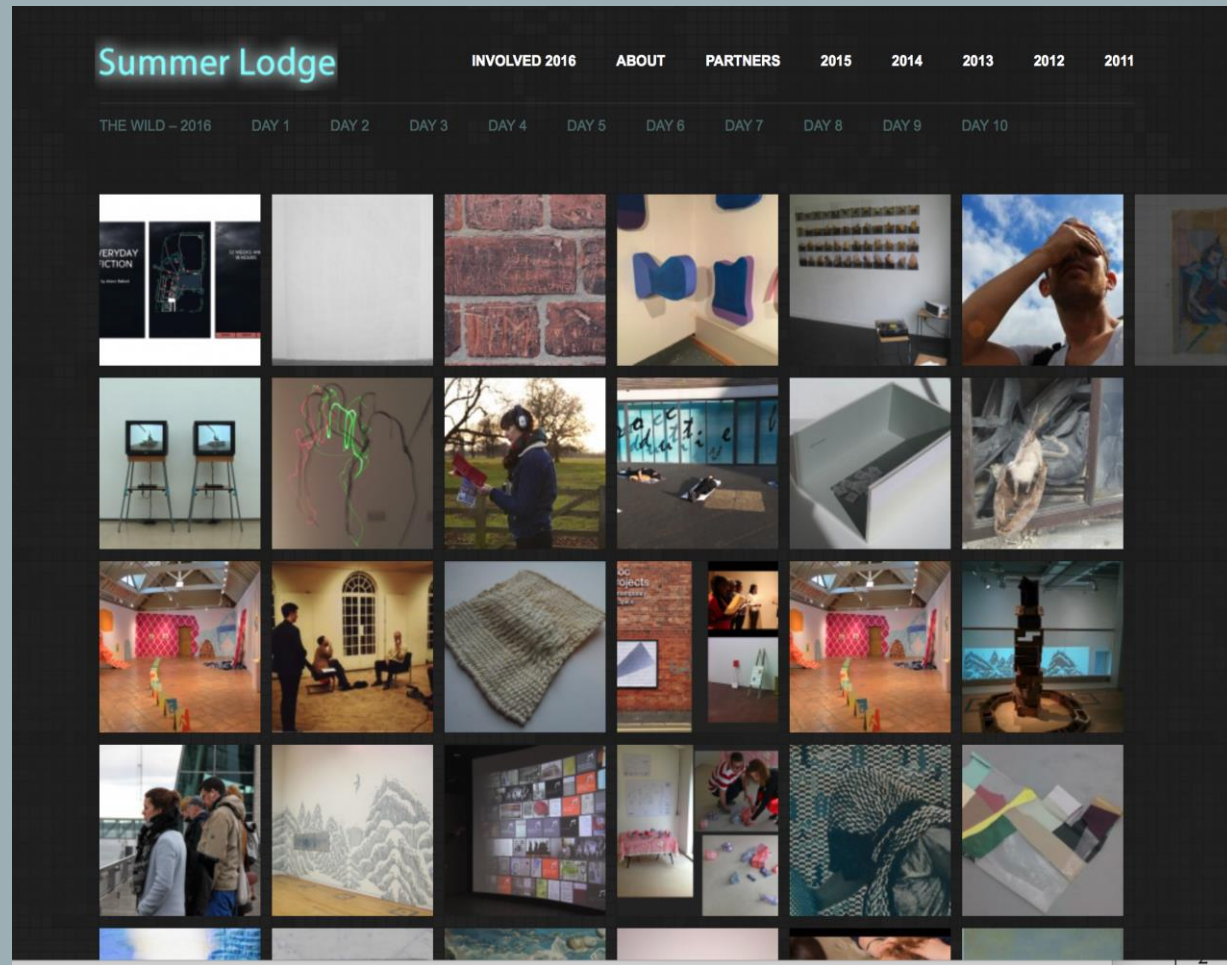
“You can actually make as much work as you want to make...you know, you shouldn’t do the minimum, you should do however much you want to do!”

– student studio assistant

Website: www.summerlodge.org

Facebook: @thesummerlodge

Contact: summerlodge@ntu.ac.uk



All quotes taken from the research paper:
Maier, D & Stevens, C. (2016). *The Effect of Summer Lodge on Artistic Research and Pedagogy at NTU and Beyond*. Research Report, Nottingham Trent University