

# **NTU Impact Report**

## **October 2021**



Nottingham Trent  
University

# Foreword by Professor Edward Peck



Those of us who work in universities take it for granted that we are major assets in the towns and cities in which we are located. We produce reports that catalogue the innovations we generate and the jobs we create and sustain. On occasions, what we do really captures the public imagination, such as with Oxford University's role in the development of Astra Zeneca Covid-19 vaccine. Mostly, however, we are preaching to the choir.

At NTU, we want to try and convey our impact by focusing on the tangible benefits universities can bring to the communities we aspire to serve, whether these are local or global, students or employers. In this first bi-annual report, we focus on the progress we have made in working with local partners to make Mansfield and Ashfield university towns.

I want to highlight one major difference we have made to date. This year we have recruited 96 local residents onto brand new nursing courses in Mansfield. This will mean many more local people acquiring the skills and knowledge they require to pursue careers in nursing close to home, in collaboration with the local NHS Trust which will provide clinical placements. In time, they will fill the vacancies for nurses within that Trust, enhancing both the health care system and the local economy in the two Towns.

We are going to replicate this model – where employers define the skills and knowledge they require and NTU provides flexible methods for local people learning them - across a range of sectors in both the public and private sector. The only courses we will run in the two Towns will be those that meet the needs of local employers.

This approach will be underpinned by partnership between NTU and the local College and by money invested by the University, but also by the range of posts that are and will support levelling-up. Some of the early success of that approach is detailed below.

I trust what follows provides an accessible account of what NTU has achieved so far and how we intend to grow this University's contribution to driving levelling-up.

**Professor Edward Peck**  
Vice-Chancellor

# Driving Levelling-up in the East Midlands



## NTU's presence in Mansfield and Ashfield

In October 2019, NTU announced a partnership with Vision West Nottinghamshire College, within which we committed to provide higher education programmes from the College's main campus in Mansfield.

This local provision is the crucial first step in NTU's wider contribution to supporting the levelling-up of these two former mining towns. It brings NTU's outstanding track record for innovation to the challenge of transforming the skills and knowledge of local residents in the sectors where local employers need them most.

Designed and delivered in consultation with local employers, and forming with the College an integrated pathway from level 2 (GCSEs) through to level 7 (Masters), courses will be based on Level 4 and 5 qualifications, such as Foundation Degrees, Higher Technical Qualifications, and Apprenticeships. In the near future they will be offered as standalone modules which bestow credits which both represent the achievements of the learner to date and enable further related study in the future.

This partnership exemplifies the major impact that the vision set out in the Government's Skills for Jobs White Paper will have on local prosperity, in particular when the roll-out of the Lifelong Learning Entitlement begins.

### **Key facts:**

- Teaching takes place at the College's £6.5m University Centre and in a £1.5m Centre for Health and Allied Professions, both co-funded by the D2N2 Local Enterprise Partnership.
- Over the course of five years, NTU will spend around £5m of its own capital and revenue to develop its presence on the Mansfield campus.
- Recently, it allocated a further £1m to enhance its research and innovation capability to support the Ashfield Automated Distribution and Manufacturing Centre funded through the Government's Towns Fund programme.

### **Current and planned courses:**



Nursing and allied health



Health and social care



Business



Early years and childhood studies



Sport Science



Youth Justice



Computing and Technology



Engineering



Construction



Ambulance Technician Practice

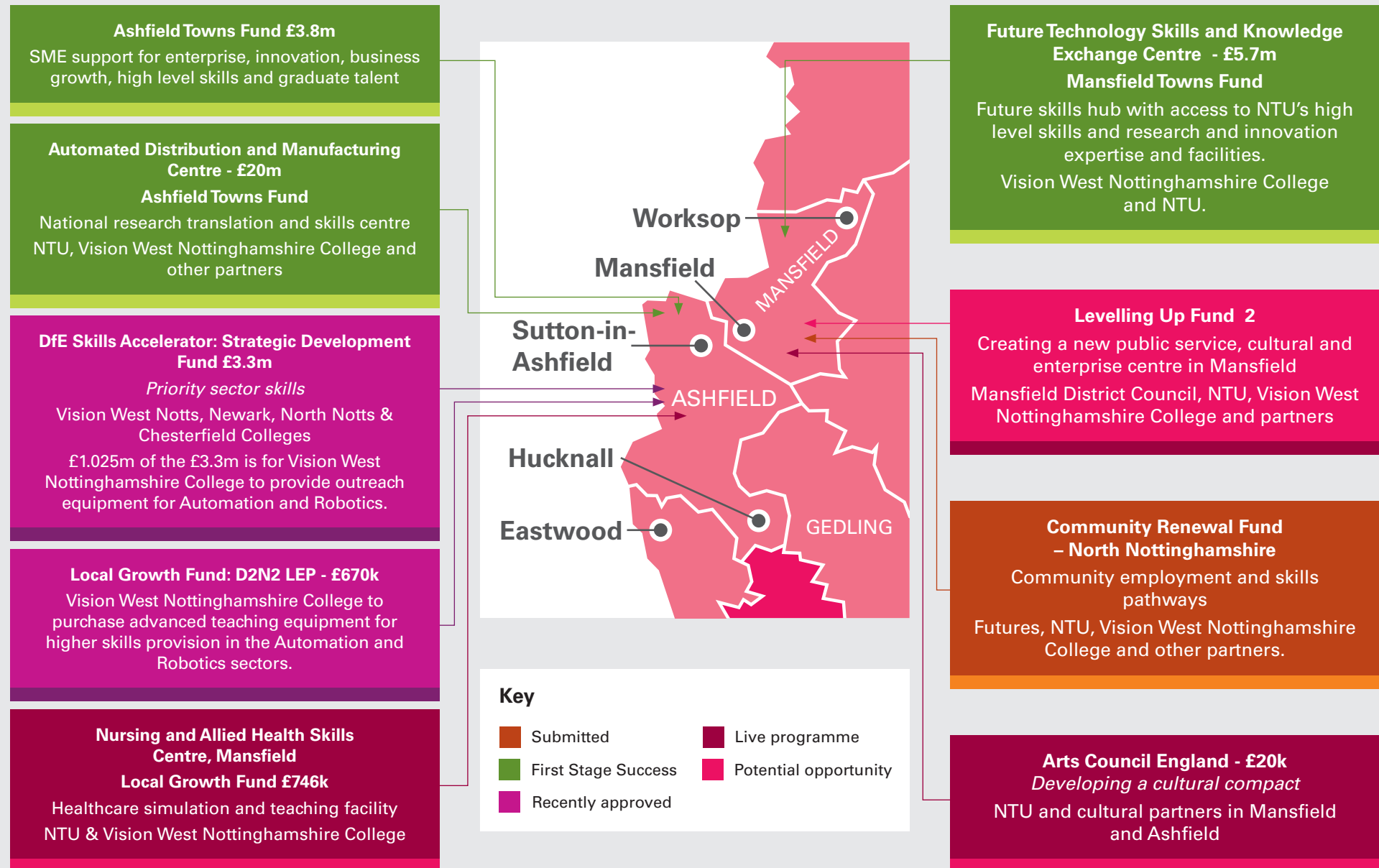
### **Strengthening communities**

Providing higher education courses is just one strand in NTU's Mansfield and Ashfield programme. NTU has:

- Established the Mansfield and Ashfield Education and Skills Group, which works with local businesses, councils, schools and political leaders to improve educational attainment in schools.
- Secured funding from the Arts Council to develop a 'Culture Compact' with local partners to improve the cultural offering in the Towns.
- Enabled NTU to play a significant role in the development of bids which are generating resources from a range of sources - such as the Government's Future High Streets and Towns Funds – and which are being coordinated locally into a mutually supportive set of initiatives. These are summarised below.
- In addition, NTU is looking to create a new social housing model of student accommodation based on community integration rather than income generation.
- It will also bring its know-how to the Towns, such as enterprise support and legal advice which are available already on our campuses in Nottingham.

Overall, NTU is seeking to make Mansfield and Ashfield University Towns, with all of the economic, cultural and social benefits this will bring. As of October 2021, 262 students are studying with NTU on programmes in Mansfield, following only our second intake.

# Economic Investment and Partnership Opportunities in Mansfield





Nottingham Trent  
University

Published October 2021