



Nottingham Trent
University

Clifton Campus

Landscape Management Plan

Date: January 2025

Version: 01
Date: 22/02/13

Author: ST

Version: 02
Date: 31/01/14

Author: CPH

Version: 03
Date: 30/01/15

Author: SR

Version: 04
Date: 29/01/16

Author: SB

Version: 05
Date: 19/01/17

Author: ZT

Version: 06
Date: 26/01/18

Version: 10
Date: 30/01/22

Author: SR

Version: 11
Date: 19/01/23

Author: JM

Version: 12
Date: 19/01/25

Author: JM

Author: KDM

Version: 07

Date: 28/01/19

Author: OH

Version: 08

Date: 29/01/20

Author: SR

Version: 09

Date: 02/01/21

Author: SR

Contents

1. Introduction and Background	6
1.1. Location	7
1.2. Current Use	7
1.3. Recent and Proposed Development.....	8
2. A Welcoming Place.....	13
2.1. Good and Safe Access	14
2.2. Signage.....	15
2.3. Equal Access for All	15
3. Health, Safety and Security.....	16
3.1. Appropriate Provision of Quality Facilities and Equipment.....	17
3.2. Safe Equipment and Facilities	18
3.3. Personal Security	20
3.4. Health and Safety.....	21
3.5. Accident and Incident Reporting	21
3.6. Dog Fouling	21
3.7. Working Hours	22
4. Cleanliness and Maintenance	23
4.1. Litter and Waste Management	24
4.2. Horticultural Maintenance	25
4.3. Tree Maintenance	26
4.4. Building and Infrastructure Maintenance	26
4.5. Equipment Maintenance.....	26
4.6. Maintenance Planning	27
5. Environmental Management	28
5.1. Managing Environmental Impacts.....	29

5.2. ISO 14001 Environmental Management System	29
5.3. Pesticides and Herbicides	29
5.4. Composting	30
5.5. Travel & Transport	31
5.6. Energy Consumption and Production.....	33
5.7. Staff Engagement	33
5.8. Fairtrade	34
5.9. Climate Change and Adaptation	34
6. Biodiversity, Landscape and Heritage.....	35
6.1. Management of Natural Features, Wild Fauna, and Flora	36
6.2. Habitats on Campus.....	37
6.3. Rewilding Areas & Wildflower Meadow.....	37
6.4. Compensation Planting	38
6.3. Water Conservation	39
6.4. Planting Policy.....	40
6.4. Conservation of Landscape Features.....	41
6.4. Biodiversity Monitoring	42
7. Community Involvement.....	44
7.1. Community Events.....	45
7.2. Hedgehog Friendly Campus (HFC).....	47
7.3. Community Access	48
7.4. Room Hire.....	48
7.5. Sports Facilities	48
7.6. Foodshare Allotment	49
7.7. Educational Activities.....	50
8. Marketing and Communication	53
8.1. Marketing and Promotion.....	54

8.2. Communication Channels 54

8.3. Educational and Interpretational Information 54

9. Management..... 55

 9.1. Management Structure..... 56

 9.2. Project Funding 56

 9.3. Management Priorities 56

Appendices 57

 Appendix A – Landscape Operations Service Level Agreement 57

 Appendix B – Implementation Plan 59

 Appendix C – Habitat and Species Conservation Management Plan..... 61

 Estate-Wide Actions..... 61

 Built Environment 62

 Woodland & Scrub..... 62

 Woodland & Scrub..... 63

 Non-Agricultural Grasslands..... 64

 Wetland & Water..... 65

 Appendix D – Clifton Campus Habitat Map 66



Section 1: Introduction and Background

1. Introduction and Background

1.1. Location

Clifton Campus spans 32 hectares on the south bank of the River Trent, about four miles southwest of Nottingham City Centre along the A453, Clifton Lane. The campus is accessible by bus, bike, car, or on foot, with the main entrance located on Clifton Lane.

The award-winning Uni 4 bus service connects Clifton Campus to Nottingham, with buses departing from Nottingham Trent University (NTU) City site every 7-10 minutes during term time, Monday to Friday. During university holidays, the campus remains accessible via the South Notts 1 bus service, which stops just outside the campus on the A453.

Additionally, the campus can be reached via the Nottingham Express Transit (NET) Tram. Further details on tram access are provided in Section 5.6.



Figure 1 - 2023 Plan of Clifton Campus

1.2. Current Use

Clifton Campus is home to NTU Sport, the School of Science and Technology and the Nottingham Institute of Education.

Clifton Campus hosts lecture theatres, General Purpose Teaching Rooms, laboratories, IT suites, a library, and a sports centre, all equipped to support the diverse courses offered to around 8,000 students. The campus also includes a health centre, two halls of residence, a student union, sports pitches, shops, and cafes, making it a self-sufficient environment.

1.3. Recent and Proposed Development

Under NTU's Sustainable Construction Policy, all new buildings must achieve a minimum BREEAM Excellent rating, while major refurbishment projects are evaluated for environmental performance and certified under the RICS SKA Rating system.

NTU is a Client Partner of the Considerate Constructors Scheme (CCS), working to improve the image of construction by working with construction companies minimising negative impacts and promoting excellence in appearance, community respect, environmental protection, safety, and workforce care.

Campus redevelopment began in the summer of 2014 with the 'Heart of Campus' project, adding the Pavilion and the Teaching and Learning Building to the campus. Further developments include the ISTECH, Engineering, MTIF, and Health and Allied Professions buildings, detailed below.

1.3.1. Clifton 'Heart of Campus' Regeneration (2014-2016)

Since 2016, the Pavilion and the Teaching and Learning Building have formed the Heart of Campus. Landscaping completed during this development connects the NTU Sports Centre and The Clubhouse to the Refectory and Pavilion gardens, with a focus on pedestrian pathways and biodiversity.

A key feature of the redevelopment is the new 'Green Zone' at the campus centre. This area is free from smoking, unauthorised traffic, and parked bicycles, enhancing the campus's peaceful atmosphere.



Figure 2 - Aerial view of the Pavilion, Learning and Teaching Building and the Plaza, the Heart of Campus

1.3.2. A453 Widening (2015)

The widening of Clifton Lane (A453) was completed in the summer of 2015. This project encroached upon the campus, resulting in the loss of the ancient hedgerow and the trees that once lined its boundary.



Figure 3 - A453 compensation planting

In March 2014, compensation planting was undertaken along the eastern boundary of the campus. This planting, consisting entirely of British native species, was intended to create an effective screen against visual and noise pollution, preserving the campus's peaceful and secluded atmosphere. Additionally, it aimed to enhance both the quantity and diversity of available habitats.

1.3.3. Interdisciplinary Science and Technology Centre (ISTEC) (2017)

This building supports research and teaching by bringing together students, researchers, staff, and businesses for project-based work with real-world applications. Its facilities include laboratories for chemistry, physics, and biosciences, a robot arena for humanoid robots, and specialised computing labs for networking, security and forensics, games, data science, and high-performance computing.

A beehive installed on the roof is used by an NTU Associate Professor for research. The hive is monitored remotely using small coin-sized accelerometers that detect vibrations from the bees' buzzing, enabling observation without disturbance.

1.3.4. Engineering building (2019-2020)

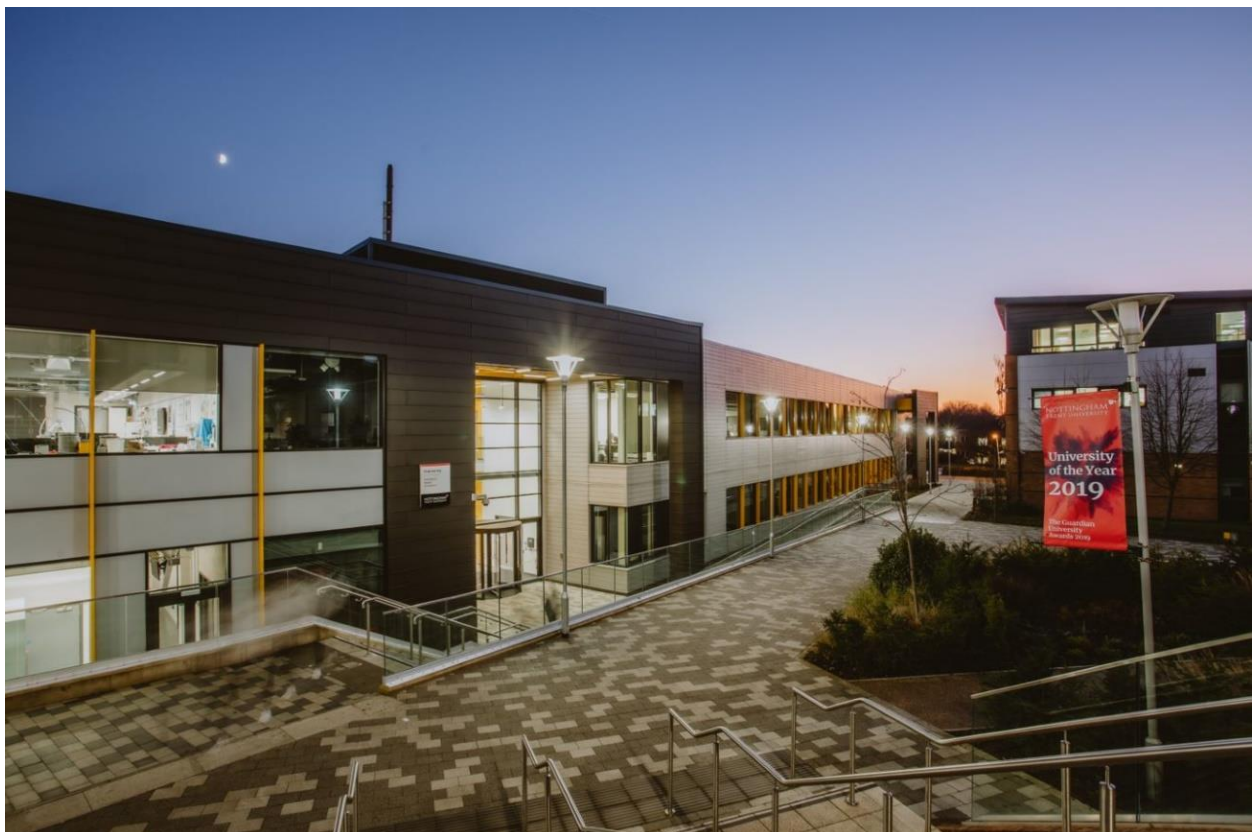


Figure 4 - The Engineering building

In 2020, works were completed on the School of Science and Technology's Engineering Building, now home to the Department of Engineering. The building offers attractive, flexible learning and teaching spaces, equipped with specialist tools to support project-based, industry-focused research across nine technologies, including autonomous robots, simulation, and cybersecurity, transforming automation in manufacturing and production.

The building also features facilities for commercial research, professional development, and consultancy activities.

1.3.5. Medical Technologies Innovation Facility (MTIF) (2019-2021)

This new multi-disciplinary research and development building, completed in January 2021, focuses on early-stage research in medical technology, particularly medical devices. It provides a space for organisations, clinicians, and university researchers to collaborate, develop ideas, and bring them to market quickly.



Figure 5 - MTIF building.

1.3.6. Health & Allied Professions Centre (2020-2022)

Completed in 2022, the purpose-built Health & Allied Professions (HAP) Centre serves as the hub for world-class teaching, practice, research, and scholarship within the Institute of Health and Allied Professions (IHAP). The 34,000-square-foot facility includes mock hospital wards, consultation and counselling rooms, creative teaching spaces, and specialist equipment, equipping students with the knowledge and skills needed for dynamic careers in nursing, paramedicine, and healthcare.



Figure 6 - Health & Allied Professions Centre



Section 2: A Welcoming Place

2. A Welcoming Place

2.1. Good and Safe Access

The award-winning Uni 4 bus service runs throughout term time, taking about 25 minutes between City Campus and Clifton Campus, passing through Nottingham City Centre and the train station. Double-decker buses stop at both campuses.

A mainly traffic-free cycle route between the campuses takes around 30 minutes. More information on cycling is available on NTU's Sustainability web pages. The NTU Cycle Hub at City Campus offers bike hire for £49 per year for travel between campuses, accommodations, and the city.

NTU's Clifton Travel Plan and Nottinghamshire County Council's cycle strategy anticipate a rise in non-motorised travel. In support, a secure cycle compound with 30 bike spaces was added in December 2019, strengthening the campus cycle route.

Access across the site meets BS 8300, ensuring that the design of buildings and their approaches meet the needs of people with disabilities, making them accessible to all. This includes level or ramped access into buildings, dropped kerbs, and tactile paving at most road crossings. Pathways throughout the campus are designed to be accessible for wheelchairs and pushchairs. In all new developments, careful consideration is given to Disability Discrimination Act requirements.



Figure 7 - Typical cycle compound on Clifton

All NTU students, visitors and deliveries are asked to use the Main Gate to the campus and report to the gatehouse. South Gate is for staff use only. Another entrance on Clifton Lane, known as the Central Approach, is for pedestrians and cyclists only. Upon entering from the Main Gate, students and visitors are directed to the student and visitor car park. Students need an annual parking permit, while visitors receive a free day permit. Cyclists are directed through the centre of campus, through the pedestrianised entrance, which then leads to various on-campus cycle storage. Staff using the South Gate will park in the South Gate car park, which charges a daily fee deducted automatically via staff cards. Both car parks are within walking distance of campus facilities.

2.2. Signage

Standardised signage featuring the NTU logo and typeface is prominently displayed across the campus. In 2020, the campus underwent a comprehensive signage update, with external signs, monoliths, and windows being rebranded and reskinned to reflect the university's identity.

Information boards across the campus provide details about buildings and on-site security contacts. New copper boards were added to highlight the 'Green Zone'.

Beyond the buildings, the Clifton Nature Trail, an informal path along the campus perimeter, allows users to enjoy the site's landscape. Information boards along the trail share insights into the site's ecology, history, and wildlife which are due to be updated from 2025.

2.3. Equal Access for All

Clifton Campus is not only a vital resource for students and academics but also provides facilities for the local community. The Clifton Sports Hub is the main centre for community use, offering a variety of amenities, detailed further in **Section 7.5**.

The campus actively encourages public involvement, ensuring the community can fully take advantage of the opportunities available. These include Open Dome astronomy events, Open Days, and sporting events. Additionally, community groups and schools can use the allotment and outdoor classroom behind Peverell Hall reception for activity sessions (see **Section 7.6**).



Section 3: Health, Safety and Security

3. Health, Safety and Security

3.1. Appropriate Provision of Quality Facilities and Equipment

The University is committed to ensuring that the campus remains a safe environment for all users. To maintain safety, the Estates Department conducts a program of regular inspections to identify and address potential issues. A sample maintenance plan can be found in Appendix A. Staff and students can report any problems to the maintenance department via the Estates Helpdesk, accessible through MyHub. These issues are prioritised and addressed as quickly as possible. The public can report concerns to Reception Officers or use the contact numbers displayed throughout the campus. A wide range of well-maintained indoor and outdoor green spaces is available for students, staff, and the public, with landscaping, maintenance, and sports staff ensuring their upkeep to a high standard.

The campus dining outlets offer a diverse selection of freshly prepared meals from around the world each week, including great-value breakfasts and healthier options. The NTU Catering Team collaborates with the Sustainability and Procurement Teams to consider ethical, social, and environmental factors when selecting food and drink products.



Figure 8 - Outdoor seating space on the Plaza

Outdoor seating is available throughout the campus, including on the Plaza, at the Student Union, and in the outdoor classroom at the allotment site. Toilets are located across the campus, with most facilities accessible to the public.

Security staff, all trained first aiders, are available 24/7 to assist campus users. They can be reached at **0115 848 6600**, a number which is provided on the campus information boards.

3.2. Safe Equipment and Facilities

Built features within the grounds are regularly inspected, and appropriate actions are taken, as necessary. All equipment used to maintain the grounds undergoes an annual inspection to ensure its safety. Landscape Services also implements a Reactec Hand Arm Vibration (HAV) safety system to protect staff during their work activities.

As part of NTU's involvement with the Hedgehog Friendly Campus (HFC) initiative, all trimmers and mowers were labelled in 2020 to remind users to check for hedgehogs and other wildlife before use. More information on the HFC initiative can be found in **Section 7.2**.



Figure 9 - Landscape Services equipment labelled with Hedgehog warning sticker.

The Landscape Services Manager actively monitors potential external threats to the tree stock, such as the national spread of tree diseases, and takes pre-emptive action as needed. External consultants, FPCR Environment and Design Ltd conduct a survey of all tree stock, including woodlands on campus, every three years. This survey provides advice on tree health and identifies any trees that are dead, dying, or dangerous. The most recent survey was completed in December 2022.

Water safety is a priority, and as such, the risks posed by water bodies have been assessed and addressed appropriately to ensure that the grounds can be safely used. The three balancing ponds south of Peverell Hall are surrounded by dense native vegetation, discouraging public access. However, access is available for maintenance, teaching, and research. Gently sloping, solid edges comply with safety guidelines. These edges also allow wildlife, such as hedgehogs, to escape if they enter the water. Pedestrian guardrails around the swale at New Hall Student Village help prevent access to the water. Drainage outlets also ensure that the water does not become too deep. Regular checks of guardrails, outlets, and barriers are made as part of the maintenance regime.



Figure 10 - One of the balancing ponds located by the Peverell Halls

3.3. Personal Security

Security at City Campus operates 24/7, providing surveillance and peace of mind to all site users. The campus is monitored by a network of CCTV cameras that record 24 hours a day, with footage accessible to the Security Team, ensuring excellent coverage across the site.

Newly installed Emergency Security Points (ESPs) are strategically located around the campus to enhance safety. These can be found at the following locations:

- ESP8 Observatory
- ESP9 Loop Road (Rear of Library)
- ESP10 ANT

These ESPs were placed based on feedback from NTU students and staff, identifying the areas where they would be most beneficial. The ESPs allow NTU students, staff, or the public to contact the 24/7 Security Team in case of an emergency. Each point is equipped with an intercom, camera, and CCTV system that scans the surrounding area. When the button is pressed, it rings like a phone, and a Security Officer will respond. The caller can then explain the issue through the intercom, and the Security Team will assess the situation, provide advice, attend the scene, or contact emergency services if necessary.



Figure 11 - The Pavilion and Plaza are suitably lit for safety and aesthetic.

The on-site Landscape Services Team works closely with the Security Team to ensure CCTV views remain unobstructed and that sightlines along footpaths and access routes are maintained. Street lighting provides adequate illumination along roads and paths around the main campus. Where hedges are located along these routes, they are maintained to a maximum height of 1.5m to improve visibility for security and maintenance purposes.

All incidents of crime are recorded, and annual statistics are compiled. This helps the Security Team assess progress, refine the security policy, and take appropriate action to reduce the likelihood of future incidents.

3.4. Health and Safety

The Landscape Services Manager is responsible for ensuring safe working practices within the Landscape Services Team. Risk assessments and safe working procedures are regularly reviewed to maintain safety standards. Control of Substances Hazardous to Health (COSHH) assessments are documented and updated as needed. The team is fully trained in their responsibilities under Health and Safety legislation. Staff working on the grounds are provided with the required protective clothing and equipment. In addition, they receive training on key safety topics, including chainsaw use, tree climbing, fire safety, and first aid. Staff also have access to relevant risk assessments and information leaflets that outline potential hazards specific to their roles.

The University's Health, Safety, and Wellbeing Team has developed comprehensive health and safety policies and procedures. All necessary precautions are taken to ensure that the grounds can be used with minimal risk of accidents or injury. Effective management practices are in place to address and mitigate health and safety concerns.

3.5. Accident and Incident Reporting

In compliance with Health and Safety at Work legislation, the University ensures that all accidents and near misses on-site are reported using a standard reporting procedure. The results are monitored centrally, and the University initiates accident investigations when necessary.

3.6. Dog Fouling

Currently, dogs are not encouraged on the campus due to the presence of outdoor sports facilities; however, members of the public are known to use the site for walking their dogs, typically around the perimeter along the Nature Trail. To accommodate this, dog waste

bins have been installed at the beginning and end of the Nature Trail. In addition, the interpretation boards situated along the trail include a note asking dog owners who use the site to behave responsibly and remove all waste. Signage specifically regarding dog fouling is also displayed, reminding visitors to clean up after their dogs.

3.7. Working Hours

The Estates Department collaborates closely with the Timetabling Department to avoid conflicts with residents or students during exam periods, sports events, or open days. In the event of any disruptions to the campus, staff and students are contacted via digital Estates Works Notifications. For updates on campus development, staff and students can visit the [Campus Developments](#) webpage.



Section 4: Cleanliness and Maintenance

4. Cleanliness and Maintenance

4.1. Litter and Waste Management

The appearance of the campus is a top priority for the University, as it plays a key role in attracting new students. The Landscape Services Team is responsible for maintaining the campus landscape, while the Facilities Team empties external litter and recycling bins daily, along with conducting litter picks and leaf sweeping when necessary. All entrances are manually cleaned and picked up every day, and the sweeper services hard surfaces each morning. Sports pitches are picked and cleaned daily, with car parks cleaned on an ad-hoc basis. The service operates on weekdays only (except when there are special events), and priority is given to high-use areas on Monday mornings, such as around the Students' Union. Since 2019, the Facility Support Team has extended their litter picks to include the roadside of the A453, supporting the efforts of a local Clifton Village resident who is a Nottingham Clean Champion.

To encourage campus users to keep the environment clean, litter bins and recycling stations are provided extensively throughout the site. In 2021, all external litter bins were replaced to ensure a more cohesive approach to waste disposal.

Clothing recycling banks are located at New Hall and Peverell Halls of Residence, providing staff, students, and visitors with the opportunity to donate unwanted clothes, footwear, and books to the British Heart Foundation (BHF).



Figure 12 - Promoting British Heart Foundation donations to fellow students.

The Sustainability Team has partnered with UPP (our on-campus halls provider) and Nottingham Trent Students' Union (NTSU) to promote these donation locations across three of NTU's campuses. In 2019, this collaboration was recognised with the Retail Partner Award at the British Heart Foundation Hero Awards.

Each year, as students vacate their halls of residence, a significant amount of unwanted clothing, kitchen items, electrical appliances, and unused food ends up in landfills. To address this, NTU's Sustainability Team launched the Big Clear Out initiative in partnership with UPP and NTSU, with support from the Facilities and Community Liaison teams. Collection boxes for homewares and food were placed in halls reception areas from April to August, making it easy for students to donate and maximise the impact with minimal effort. During the 2022/23 and 2023/24 move-out periods, this initiative successfully diverted approximately 14,000 kg of waste from landfills and incineration, benefiting charitable organisations. This project demonstrates the effectiveness of collaboration and highlights the University's collective commitment to sustainability.

NTU operates a fully integrated Environmental Management System (EMS), with further details provided in **Section 5**. As part of this system, a series of policies have been developed to support the sustainability objectives of the EMS. NTU's waste guides, available on the Sustainability webpages, encourage the use of recycling bins and donation banks. In December 2024, NTU rolled out new signage on all internal bins to clarify waste acceptance criteria. The Sustainability Team also promotes the use of Warp It, an online portal for the reuse of furniture and equipment. All NTU staff are encouraged to use Warp It to redistribute unwanted furniture. Since its launch in September 2018, this initiative has saved £336,354, diverted 41,002 kg of waste from landfill, and significantly increased resource efficiency.

4.2. Horticultural Maintenance

The Landscape Services Team is responsible for maintaining the grounds and enhancing the campus's outward appearance. The team meets regularly to discuss seasonal priorities, such as leaf clearance in autumn and cutting of amenity spaces/sports pitches in summer. In addition to an annual programme of short-term maintenance tasks, a longer-term plan addresses more complex issues, such as replanting specific areas, such as de-silting the balancing ponds and replanting specific areas.

To date, over 1.2 million bulbs and 8,000 square metres of wildflower meadow have been planted around campus over the last few years to improve both the biodiversity and appearance of the campus.

4.3. Tree Maintenance

FPCR conducts three-year surveys that map the location of every tree or group of trees, assigning each a unique code. A linked database provides detailed information on the species and condition of each tree, highlighting any necessary maintenance. The Landscape Services Team uses this dynamic database to manage the tree stock effectively. This work is further supported by reactive measures, such as responding to storm damage when needed. three-year surveys identify the location of every tree or group of trees, assigning them a unique code. A database linked to the plans lists the species and condition of each tree, highlighting any required maintenance work. The Landscape Services Team uses this active database as a tool to manage the tree stock. This work is supported by any reactive tasks that may arise, such as responding to storm damage.

4.4. Building and Infrastructure Maintenance

The Campus features a diverse range of buildings in terms of age, scale, style, and function. While each building serves a specific purpose—whether for teaching, research, administration, or residential use—all share the same vibrant setting. The Estates Department ensures that all buildings are maintained to a high standard, with an on-site maintenance team responsible for their upkeep.

4.5. Equipment Maintenance

A programme of equipment inspections is in place to ensure that all work equipment is safe to use, as required by the Provision and Use of Work Equipment Regulations 1998 (PUWER). Appliances are PAT tested, to comply with the Health and Safety at Work Act (1974), which places a duty on employers to ensure that electrical appliances used by employees, or the public are safe to use. Six-monthly inspections are carried out on tree climbing equipment under the Lifting Operations and Lifting Equipment Regulations 1998 (LOLER).

NTU's vehicles are managed by Campus Services, who ensure that they are serviced, tested, and inspected as required. Specialist vehicles, such as tractors, are either owned or leased. Servicing and maintenance of lease vehicles are included in the lease fee.

An on-site closed-loop system vehicle wash-down facility, located within the Landscape Services maintenance compound. It is used to clean and maintain landscape machinery, equipment, and NTU fleet vehicles.

4.6. Maintenance Planning

The Landscape Services Team is adaptable to changing conditions, taking on tasks such as gritting roads during icy weather and clearing tree debris after high winds. Daily maintenance is coordinated through team discussions, with objectives and actions set by the Landscape Services Manager. Health and safety-related tasks are prioritised. The team also follows a tree replacement policy, planting a new tree for every one removed through maintenance.

Cyclical maintenance activities, including shrub bed care, summer bedding planting, mowing, and strimming, are carried out by the Landscape Services Team. A sample planning document for this work can be found in **Appendix A**.



Section 5: Environmental Management

5. Environmental Management

5.1. Managing Environmental Impacts

NTU is dedicated to acknowledging and minimising its environmental impact. As of January 2025, NTU is ranked as a first-class university in the People & Planet League and is placed 2nd in the University of Indonesia Green Metric World University Ranking. The University has several policies related to environmental sustainability, including an overarching Environmental Policy, which are reviewed annually by senior management and are publicly available on [NTU's Sustainability webpages](#).

NTU has committed to achieving Net Zero Carbon (NZC) emissions by 2040, fostering a Zero Carbon culture across the NTU community. NZC by 2040 has become a strategic institutional key performance indicator (KPI). This commitment will address carbon emissions linked to energy use across the NTU estate and tackle scope 3 emissions—those emissions from activities over which NTU has less direct control.

5.2. ISO 14001 Environmental Management System

NTU's Environmental Management System (EMS) was initially established through the 'EcoCampus' scheme and is aligned with the ISO 14001 standard. The University first gained certification in November 2012. ISO 14001 is an international standard that provides a framework for identifying and controlling environmental impacts, improving environmental performance, and ensuring legal compliance.

5.2.1. Environmental Management Review Committee

The Environmental Management Review Committee meets bi-annually to oversee the successful implementation of the University's EMS across the NTU estate. The committee reviews and discusses key objectives aimed at improving environmental performance, including waste reduction, promoting sustainable transport, lowering energy-related emissions, reducing water consumption, fostering sustainable procurement practices, and enhancing biodiversity. This ongoing review ensures that NTU remains committed to its environmental sustainability goals and continues to make progress in these critical areas.

5.3. Pesticides and Herbicides

Integrated Pest Management (IPM) is utilised to maintain the landscapes, using an environmentally sensitive approach that combines various sustainable practices.

Pesticides are only used when necessary and in accordance with legislative guidelines. This is part of a broader integrated approach, where manual and biological control measures are prioritised. Herbicides, turf fungicides, and insecticides are applied in specific areas when appropriate. All ground maintenance staff are fully trained in the safe application of these chemicals and hold the necessary certifications.

5.4. Composting

To minimise the environmental impact of landscaping, NTU uses peat alternatives or peat-reduced compost, including on-site compost. Horticultural waste from the grounds is recycled into compost or mulch. Landscape Services staff separate woody materials (for mulching) from softer materials like autumn leaves (to enrich soil). A composting machine and chipper are used to process the waste at Clifton Campus.



Figure 13 - Composting facility on campus converts pruning to a rich compost.

Landscape Services operate a dedicated composting facility situated at the far perimeter of the student car park area, where all soft and woody landscape materials are recycled. Most of this material is processed using a composting machine, then regularly turned, and left in the bay area for at least six months before being returned to the woodland areas. This landscape recycling facility is securely fenced off and licensed by the Environment Agency.

All compost produced is used on the grounds, contributing to sustainable landscaping practices.

5.5. Travel & Transport

5.5.1. NCT Buses

During term time, the award-winning NCT Uni 4 bus service operates between the City site and Clifton Campus every 7-10 minutes. At the start of the 2019/20 academic year, the fleet was upgraded to the latest clean buses featuring Euro IV engines, significantly reducing emissions and carbon compared to the previous fleet. As part of the Heart of Campus regeneration, a bus stop was added at the Main Gate, allowing Uni 4 buses to enter and exit. The number 1 bus service also runs seven days a week, stopping just outside the campus.

5.5.2. NET Tram

Staff, students, and visitors can alight at the Rivergreen tram stop, which is a short 10-minute walk from the campus entrance. A direct tram service from NTU City Campus to Rivergreen takes just 22 minutes.

The Tram Park and Ride offers a discount for NTU students and staff, with a return ticket from Clifton South Tram Park and Ride to Rivergreen Tram Stop available for £1.50. This service provides additional parking capacity, helping to alleviate pressure on on-campus parking.

5.5.3. Cycle Provisions

The NTU hosts a Cycle Hub to encourage staff and students to cycle more frequently. The initiative offers a range of activities, including infrastructure improvements on and between campuses, promotion of cycling through social media and events, and a bike hire scheme for students and staff.

Over 200 hybrid bikes are available in assorted sizes for hire at £49 per academic year (plus a £60 refundable deposit). The hire fee covers bike maintenance sessions, lights, a D-lock, access to secure cycle storage at all campuses, and free bike training and support, including information packs and drop-in surgeries. In 2023, 18 e – bikes became available for staff to hire for £75 (plus a £125 refundable deposit) a term. In addition to bike hire, NTU staff can

access the Cycle to Work scheme, enabling them to purchase a tax-free bike and accessories up to a value of £2,500.

NTU's Sustainability webpages provide up-to-date information on cycling facilities, including maps of cycle routes, compounds, lockers, and showers. The site also offers general advice on bike purchases, maintenance, and cycle clothing. Staff are invited to join a MS Teams 'Cycling Forum' where updates and information about cycling at NTU are shared. Currently, 465 cycle spaces are available on campus, many within restricted access shelters equipped with swipe card access and CCTV.

5.5.4. E Scooters

NTU is supporting the Nottingham City Council e-scooter trial, providing a greener travel option for short-distance journeys across Nottingham. The scheme initially began back in October 2020 to help ease travel worries during the COVID-19 pandemic as part of a 12-month trial but has since been extended a few times with the scheme set to continue to May 2026. Further extension decisions have not yet been confirmed by the Department for Transport.

Nottingham's e-scooter rental scheme is set to return in March 2025 with Tier-Dott selected as the council's new operator. 1,300 striking blue and red vehicles branded as "Dott" are to be activated across Nottingham as a part of the government-back rental trial. E-scooters offer the potential for convenient, fun, clean and affordable travel, reduce reliance on car trips and lower harmful emissions.

5.5.5. Electric Vehicles

In 2014, NTU purchased its first zero-emissions van for use by the maintenance teams across the estate and the Landscape Services team also has its own electric vehicle. Landscape Services use and maintain its own John Deere electric-powered gators (all-terrain utility vehicles) for on-site maintenance.

NTU has 32 EV charging bays across our City, Clifton and Brackenhurst Campuses. Colleagues can use these to charge their electric vehicles. Five of these are dedicated accessible spaces for blue badge holders. Clifton Campus hosts a total of 16 bays, including 10, one accessible, in the Main Gate car park. 2 bays with one accessible space at Clifton Security Gate House and four bays in the South Gate car park.

5.6. Energy Consumption and Production

5.6.1. Solar Photovoltaic Panels (PV)

There are photovoltaic (PV) installations on several buildings across the Clifton Campus, including the Clifton Library, Rosalind Franklin, Pavilion, The Club House, Engineering Building, MTIF, HAP, and ISTECH buildings. These installations collectively generated 205,653 kWh of renewable energy during the academic year 2023/24. Additionally, the New Hall student accommodation is equipped with solar thermal panels, which generate hot water for the residents.

5.6.2. Efficient Cooling System

An efficient cooling system has been installed in the Clifton Data Centre to reduce its carbon footprint. The Evaporative Cooling System ensures a consistently stable internal environment in terms of both temperature and humidity, irrespective of external conditions.

This system delivers a 90% reduction in annual running costs, which means that up to 40% of the energy required for the installation can be sourced from the photovoltaic panels on the data centre's roof. As a result, the carbon footprint associated with cooling in the data centre has been significantly reduced.

5.6.3. Combined Heat and Power (CHP) Plant

There are two Combined Heat and Power (CHP) units on Clifton Campus, which are fuelled by natural gas and supply heating to several buildings across the campus. NTU's electricity is sourced from a green energy provider. The University is also committed to advancing projects aimed at increasing the use of renewable energy sources throughout the estate.

5.7. Staff Engagement

In January 2019 NTU launched Green Rewards, a programme for all students and staff to sign up to and take part in. Participants earn rewards for taking actions that reduce their impact on the environment, positively impact the local community and boost their health and well-being. As of January 2025, NTU has 3,295 students and 1,436 staff signed up to the Green Rewards platform with 426,906 actions completed which has led the avoidance of 808,549 kg of CO₂.

As of January 2025, 70 staff are currently signed up for the "Sustainability Representatives" Scheme. The scheme consists of department representatives who are encouraged to

engage with the Sustainability Team and report any issues and suggestions across the campus landscape and operations. Termly meetings, with guest speakers are held with the group, and a Microsoft Teams Network allows continual discussion.

The Sustainability Team run monthly staff awareness courses for all colleagues, including new starters. The training allows staff to gain an understanding of sustainability at NTU, understand their responsibilities as staff members and find out ways they can get involved with sustainability projects and events.

5.8. Fairtrade

NTU has been awarded Fairtrade University status for the last 14 years. Fairtrade products are available in all Campus shops and catering outlets and used in all meetings hosted by the University and the Students' Union.

Fairtrade Fortnight events are held at NTU each year to raise awareness of the impact of Fairtrade amongst staff and students. This is led by the Fairtrade Steering Group who demonstrate a strong commitment to increasing Fairtrade consumption on all NTU Campuses. The ST and Fairtrade Steering Group achieved the new Fairtrade Universities and Colleges Award (FTUC) under the updated criteria in 2019. In 2024 we retained our accreditation; the next audit will take place in 2026.

5.9. Climate Change and Adaptation

As one of the UK's largest universities, NTU acknowledges the significant environmental impact of its activities at both local and global levels. The University is committed to reducing its contributions to climate change and has adopted a holistic, integrated approach to landscape management to help adapt to its effects.

One example of this commitment is the Landscape Services team's decision to stop purchasing peat-containing compost. They are currently experimenting with various alternative products to replace peat-based products. The campus is working through its remaining stock, alongside alternatives like bark mulch. Additionally, to combat the impacts of climate change, the Landscape Services team has adapted the management of the Clifton Campus. This includes regularly reviewing and selecting species that are more resilient to climate conditions, such as drought-tolerant species, and utilising advanced stock that establishes more quickly. These efforts align with NTU's broader sustainability goals, helping to ensure that the campus is more resilient to the effects of climate change.



Section 6: Biodiversity, Landscape and Heritage

6. Biodiversity, Landscape and Heritage

6.1. Management of Natural Features, Wild Fauna, and Flora

At NTU, various management techniques are employed across the Campus to maximise biodiversity and create diverse habitats. For example, patches of woodland are carefully managed to promote biodiversity by allowing native ground flora to flourish. Small piles of wood and stone are left in place to provide shelter for ground-dwelling animals such as hedgehogs and toads. The woodlands near the Observatory contain a good collection of snowdrops, bluebells, and primroses, which were transplanted by students from other areas on Campus which were being developed.

Bug hotels are regularly installed as part of compensation work for new developments, as well as through student projects and engagement activities. These insect refuges are essential for supporting pollinators and other beneficial insects. Student research has also focused on studying the effectiveness of bug hotels, particularly in areas near recreational spaces.



Figure 14 - Undergraduate students constructing and installing mini-beast hotels.

In addition, bird and bat boxes are installed on trees as part of development projects, further enhancing the campus's wildlife habitats. When safe and practical, dying trees are

left standing to support biodiversity, as they provide habitats for various species. Tree stumps are cut high to encourage wood-boring beetles, and some are sculpted to retain water, creating additional ecological benefits.

NTU is a Platinum accredited as a Hedgehog Friendly Campus (HFC) for the Clifton, Brackenhurst and City Campuses. More information on HFC is provided in **Section 7.2**.

These efforts reflect NTU's commitment to fostering a rich and diverse environment that supports a wide range of species while enhancing the beauty and ecological health of the campus.

6.2. Habitats on Campus

6.2.1. The Old Marl Pit

The Old Marl Pit (known as the Dell), located within the woodland towards the east of the site, provides an important wildlife habitat as it has a unique form and is relatively undisturbed by human activity. Both Green Woodpeckers and Lesser Spotted Woodpeckers as well as foxes have been heard and seen in the Old Marl Pit. The pit is managed with the sole focus of increasing biodiversity.

6.2.1. Balancing Ponds

The three balancing ponds, south of Peverell Hall, are aerated using a fountain, to help provide an ideal habitat for aquatic invertebrates and other wildlife. As a result, herons have been seen on pond margins.

6.3. Rewilding Areas & Wildflower Meadow

The Landscape Services Team has been working closely with the Sustainability Team to enhance biodiversity on campus by expanding areas of diverse neutral grassland habitat. This effort is part of a broader initiative to reduce the extent of amenity grassland, making way for rewilded areas and wildflower meadows.

The areas designated for rewilding are managed by reducing mowing to a single annual cut in late summer, which allows wildflowers to mature, set seed, and propagate. Cuttings from the grassland are then collected and removed, helping to maintain low-fertility soils, which in turn encourages greater species diversity.

Before undertaking any grassland management, the team ensures the safety of local wildlife by checking for hedgehogs or other creatures that could be at risk from mowing and strimming equipment. To promote awareness, "Check for hedgehogs" warning labels are displayed on all grounds maintenance equipment, reminding staff to be vigilant and minimise harm to these vulnerable species.

Wildflower meadow planting has taken place in the south of the campus, with over 600,000 bulbs planted in a special mix of carefully selected natives and non-natives which provide a visual impact and benefits for fauna. There are now over 1.2 million bulbs planted across the campus and more than 8,000 square meters of wildflower meadow. In 2019 NTU was awarded the Bees Needs Champion 2019 award recognising the bee-friendly environment that the campus creates through maintenance practices, planting design and species selection.



Figure 15 - Wildflower meadow and A453 compensation planting

6.4. Compensation Planting

Compensation planting has occurred across the campus as seen in the below picture. This plan was drawn out to identify where existing compensation planting is on campus and to avoid its removal in future campus regeneration plans. Areas in red are marked out as potential sites for future compensation planting.



Figure 16 - Compensation planting plan as of January 2021

6.3. Water Conservation

Summer bedding schemes at NTU are designed with sustainability and water conservation in mind. To reduce the need for frequent watering and to ensure the plants thrive during dry periods, the Landscape Services Team uses water-retaining granules or gel in the planting beds. These materials help retain moisture in the soil, allowing the plants to access water for a longer period, even during hot weather.

In addition, the beds are mulched, which further aids in retaining moisture by reducing evaporation. Mulching also helps suppress weeds, regulate soil temperature, and improve soil structure, all of which contribute to a more sustainable and low-maintenance bedding system. This approach helps NTU conserve water and reduce the environmental impact of its landscaping efforts while maintaining the aesthetic quality of the campus. Water used by the wash-down facility, located within the Landscape Services maintenance compound, is pumped around the system to be re-used.



Figure 17 - The Swale at New Hall student accommodation

The Swale at New Hall student accommodation acts as a flood attenuation basin, collecting surface runoff, and then allowing it to seep into the water table and the balancing ponds are naturally filled with rainwater from Peverell Hall student accommodation.

6.4. Planting Policy

NTU places a strong emphasis on using native species for landscaping to promote biodiversity and create appropriate habitats for local wildlife. The Landscape Services Team prioritise the planting of native nectar and berry-producing species of local provenance across the estate's landscaping. Where non-native plants are used, it is ensured that they are carefully selected to enhance biodiversity. Tree planting and woodland or hedgerow replacements largely focus on locally native species such as Ash, Field Maple, and Oak, which are found throughout the campus woodlands. The Landscape Services Team is vigilant in monitoring the health of the trees, particularly concerning diseases like Ash dieback. In the event of a reported case, the team follows best practice procedures to manage and mitigate the spread.

The £100,000 glasshouse facility at Brackenhurst Campus plays a key role in supporting sustainable landscaping practices by producing a wide variety of seasonal bedding plants

from seeds and plugs. This facility provides over 30,000 plants annually, fulfilling most of NTU's soft landscaping needs across all campuses. If needed, additional plants are sourced from external nurseries.

6.4. Conservation of Landscape Features

NTU's Clifton Campus hosts no listed features as it is comprised of mostly recent development. However, there are a number of Grade II listed features found to the southeast of the site in Clifton Village and Clifton Grove Conservation Areas. The historic core of Clifton Village contains 22 listed buildings and features, including Clifton Hall and the associated Icehouse. The closest listed buildings to the campus are The Old Rectory and School House, which lie near the Observatory. Although these features do not fall within the site, development within Clifton Campus must be sensitive to the setting of these adjacent Conservation Areas.

Nationally important site and SSSI Holme Pit is located 860m SW of the campus, which contains some of the best remaining areas of species-rich marsh, reed swamp and open water in Nottinghamshire and is of regional importance. Locally important sites Clifton Grove, Clifton Woods and Holme Pit Pond are located adjacent to the NW boundary of the site. These sites are designated as part of the River Trent Wildlife Corridor and consist of mixed deciduous woodland, veteran trees and a pond surrounded by reed swamp and wet grassland.

Despite the lack of apparent site heritage, there are historic features near the Campus. Most noteworthy is Clifton Grove, situated immediately northwest. Clifton Grove is a historic avenue of Elm trees, which were planted to create a majestic route alongside the river Trent to the front of Clifton Hall, this, unfortunately, fell victim to Dutch elm disease.

As described in **Section 6.2.1**, the steep-sided Old Marl Pit (The Dell), originating from around 1700, is situated within the woodland on the northeast boundary of the site. Although this feature is not recognised by way of designation as having any historic importance, it does serve as a reminder of past land use on the site, and features on the 1883 Ordnance Survey map. This area will remain an important feature, protected by the surrounding woodland. It is intended that future management will ensure that the potential for biodiversity is maximised.

In the southeast corner of the site, an ancient hedgerow believed to date back to around 1840, bordered Clifton Lane until January 2013. This was beyond the Campus boundary

and NTU was not responsible for its maintenance. Due to the A453 widening works in January 2013, the hedgerow was removed. Compensation planting as part of this road widening scheme was incorporated into the design and a new hedgerow was successfully planted in March 2014.

A group of 10 Turkey Oak trees (*Quercus cerris*), each over 20 metres in height, are located along the perimeter of the cricket pitch, on the northern corner of the site. As with all trees on the Campus, these are regularly surveyed by external consultants and maintained accordingly. They are also protected under a Tree Preservation Order (TPO) due to their prominence and contribution to the landscape both for their historical and ecological value. It is believed that these ancient trees, planted in the early 19th Century, represent the 10 fallen Clifton soldiers who fought and died at Waterloo with General Sir Arthur Clifton.



Figure 18 - Clifton Turkey Oak trees

6.4. Biodiversity Monitoring

Staff, Students, and the public have been helping monitor the biodiversity found on campus by posting their observations on the NTU iNaturalist Campus Biodiversity Network Project.

Recording and sharing species observations, is helping to inform conservation work across the estate and create research-quality data for scientists working to understand and protect

nature. Citizen scientists, made up of students staff and visitors to campus, have observed more than 550 species across NTU campuses using iNaturalist.

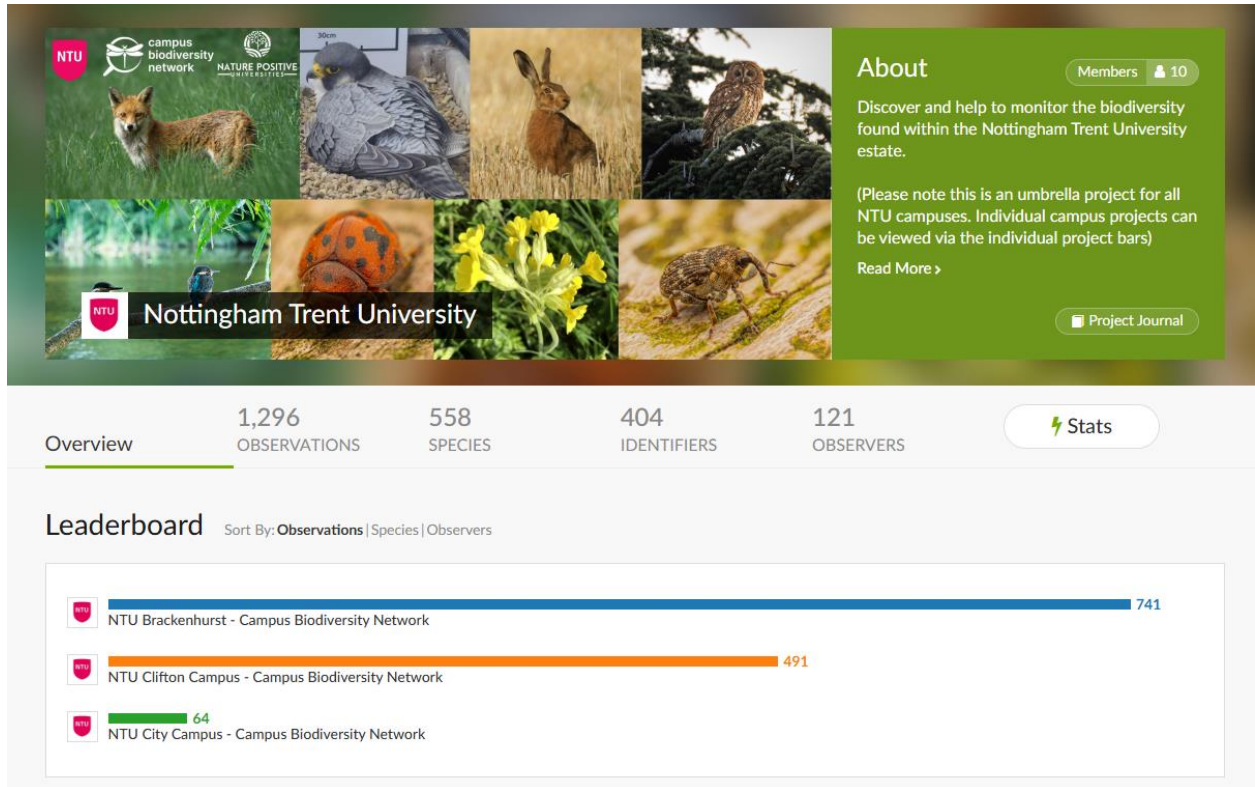


Figure 19 – iNaturalist Biodiversity Monitoring Project



Section 7: Community Involvement

7. Community Involvement

7.1. Community Events

NTU's Clifton Campus serves as a valuable resource for the community, welcoming students, staff, local school children, the public, and community groups to participate in a variety of events throughout the year, as well as offering ongoing access to the Nature Trail. This inclusive approach highlights the University's commitment to fostering a shared sense of connection and stewardship.

The Sustainability Team and Landscape Services staff actively create opportunities for collaboration among staff, students, and community members to enhance the campus environment. These initiatives aim to ensure the campus remains an inviting, enriching space for all while promoting sustainability and environmental stewardship.

The Centre for Student and Community Engagement (CenSCE) supports staff groups by organising Team Challenges at the Foodshare Allotment Project (see **Section 7.6**). Since September 2020, 11 groups comprising 87 colleagues have participated in these challenges, which include 'bespoke' tasks like building raised beds and general gardening activities. These opportunities allow teams to take meaningful action together, offering a break from their desks, particularly during the pandemic when the Foodshare project had limited resources.

In 2021/22, NTU made a significant impact on many young people (aged 7–18) from disadvantaged backgrounds in Nottingham through programmes aimed at raising attainment in schools, NTU Sport initiatives, and community volunteering opportunities. A notable example is the Progression Programme, where young people assisted at the Foodshare allotment during their summer residential, growing fruit and vegetables for local charities, including community kitchens and food banks.

The Sustainability Team collaborates with CenSCE and local schools for partnership events, which have included bulb planting, tree planting, and applying woodchip to the Nature Trail path. Community groups involved in these activities have included children and teenagers from the Spiral bereavement group, who engaged in garden craft activities and fruit and vegetable harvesting with a professional gardener, as well as volunteers from Nottingham's Women's Institute and local Clifton residents.



Figure 20 – Local Clifton Residents visiting the campus allotment.

'Open Dome' astronomy events are regularly held at the Observatory, managed by the School of Science and Technology. These events are advertised locally in Clifton Village and on the NTU staff and student event pages, as well as on Facebook. Open to the public, staff, and students, they offer a unique opportunity to explore the wonders of the sky.

Each event includes a tour of the Optical Observatory, which features a 20-inch telescope, a solar scope, and various smaller telescopes. Attendees can participate in a talk on recent, interesting, and sometimes surprising topics in astronomy, followed by the chance to engage with scientists and ask questions.

The University also hosts one-day seminars on subjects taught on campus. These seminars are open to both professionals and the public, broadening access to specialised training.

Open Days provide another opportunity for the community to engage with the University. These events allow those interested in higher education to explore the facilities. A comprehensive programme of site-wide Open Days is widely advertised, with temporary road signage to facilitate access.

7.2. Hedgehog Friendly Campus (HFC)

Since 2020, Nottingham Trent University (NTU) has actively participated in the Hedgehog Friendly Campus (HFC) initiative, providing an exciting platform to engage students and staff in actions to create a safer and more welcoming environment for hedgehogs. This commitment culminated in NTU achieving the HFC Platinum Award in 2024, recognising its efforts to establish a lasting legacy for hedgehog conservation on campus.

Key highlights of the initiative include:

- **Awareness Campaigns:** Awareness stickers have been added to all estate strimmers and mowers to reduce harm to hedgehogs (see **Section 3.2**).
- **Events and Education:** NTU has supported the British Hedgehog Preservation Society's Hedgehog Awareness Week and hosted events, webinars, and social media campaigns to educate the community on hedgehog conservation.
- **Surveys and Audits:** Regular hazard audits and hedgehog surveys have been conducted, with students and staff participating in mammal tunnel surveys to monitor hedgehog presence across campus.
- **Training and Skills Development:** In 2022, the Landscaping Services Team attended Hedgehog Friendly Grounds training, enhancing their landscaping techniques to better support hedgehog habitats.

The initiative not only underscores NTU's dedication to biodiversity but also fosters a greater sense of community involvement and environmental stewardship among students and staff.



Figure 21 - Student setting up a Hedgehog survey tunnel on Campus.

7.3. Community Access

Information can be found around the campus via the information boards located on the Nature Trail. These contain details concerning the natural points of interest, contact numbers, and a brief Code of Conduct notice. The boards were installed with the help of staff and Student Union volunteers and are due for upgrade from 2025.

7.4. Room Hire

Nottingham Trent University's Clifton Campus offers a diverse range of event spaces available for hire, accommodating events of all sizes, from intimate meetings to large conferences.

NTU offers tailored catering options ranging from light refreshments to full meals, ensuring your event is supported by quality food and drink. On-site event coordinators are also available to assist with planning and execution.

7.5. Sports Facilities

NTU Sport offers a comprehensive range of facilities and activities to cater to diverse needs, including students, staff, and members of the local community. From recreational users to elite athletes, NTU Sport supports all levels of participation.

Clifton Campus boasts an extensive complex of sporting facilities. The Clifton Sports Hub features a variety of modern indoor and outdoor recreation options, including specialist areas for strength, conditioning, and athlete support. The Hub houses a multi-station fitness suite, dance studio, squash courts, sports hall, and a high-performance gym. Outdoor facilities include five grass pitches for football, rugby union, lacrosse, and American football, as well as a cricket pitch and pavilion. Additional facilities include a state-of-the-art 3G pitch and an indoor tennis centre. These resources are part of NTU's broader commitment to promoting health, well-being, and community engagement through accessible, high-quality sports amenities.

In 2024, NTU completed a state-of-the-art hockey pitch with a 'dry turf' surface identical to that used at the Paris Olympics and the upcoming LA 2028 Olympic Games. This innovation aligns NTU with the International Hockey Federation's (FIH) vision of a more sustainable and environmentally friendly sport. Both the turf and the installation process are carbon-neutral, saving 73 tonnes of CO₂ and significantly reducing water consumption compared

to traditional pitches. NTU is the first university in the UK to adopt this cutting-edge technology, reflecting its commitment to sustainability and innovation.

NTU Sport is dedicated to fostering both recreational and competitive sports. The facilities are designed to meet the evolving needs of students, staff, and the local community, reflecting the growing interest in sports and fitness activities at all levels. Community access highlights include:

- NTU has recently hosted local sports teams, such as Nottingham Forest Women and Notts County Football Club. On a national and international level, the university has welcomed international netball teams preparing for the Vitality Nations Cup and tennis matches from the Nottingham Nature Valley Open.
- The cricket pitch and pavilion are shared with Clifton Cricket Club under a historic agreement with Colonel Clifton, allowing the club to use the pitch. The club also engages with local schools, providing coaching for children.
- The high-performance gym, equipped with specialist gear for elite athletes, regularly hosts training sessions for teams like the Championship side Nottingham Rugby, enhancing NTU's appeal to high-level sporting students.
- In addition to regular student fixtures, various organisations frequently book the campus facilities. These include England Hockey, roller derby teams, the Wheelchair Football Association, Badminton England, local schools, England Touch Rugby, and British Gymnastics, among others.

With increasing demand from both external and internal clubs, NTU Sport continues to expand its facilities and presence to meet the rising standards of student sports and community participation. This will only continue with a new Multi Use Sports Facility being constructed from 2025.

7.6. Foodshare Allotment

Established in the 2014/15 academic year, the Foodshare project is in the gardens of Peverell Halls. This joint venture between NTU, UPP Ltd, NTSU, and Nourish Associates aims to teach NTU students and staff how to grow their own food in an environmentally friendly way.

Staff and student volunteers can sample the produce as they harvest and take some home. At least half of the harvest is donated to local charities for use within the community. Past

donations have gone to groups such as Guru Nanak's Mission and Windmill Community Gardens, where the food has been used for community meals and children's craft sessions, with paints made from berries!

Sessions are held every Wednesday during term-time from 1 to 3 pm, and everyone is welcome to participate under the guidance of a professional gardener. Regular tasks include weeding, sowing seeds, laying paths, and creating compost heaps. Staff can use their allocated volunteering hours at the allotment, while students can count their volunteering time towards their HEAR. In addition to the weekly sessions, seasonal activities such as pumpkin carving and wreath making are hosted on-site. The allotment is also used by Forest Schools and various degree courses.



Figure 22 - Allotment volunteers harvest organic produce weekly.

7.7. Educational Activities

The allotment features an Outdoor Classroom—a circular structure of pergolas and log benches with a wooden, throne-like chair, surrounded by a wildflower bank and fruit trees. Built in 2017 with £8,000 in funding from Tesco's Bags of Help scheme, this space is

available for anyone to use as a social or teaching area. It has been utilised during children's activity sessions for local schools and community groups.



Figure 23 - Outdoor classroom with features for teaching and wildlife

Clifton Campus serves as a teaching and learning resource for various courses within the Nottingham Institute of Education, particularly for students training to work with children in schools and broader services. Embracing the Forest School approach to outdoor learning, students explore the child-led possibilities provided by the outdoor environment. Most teaching occurs in the woodland areas on the campus's east side, occasionally extending to other habitats and landscapes.

Students participating in these outdoor sessions can submit a portfolio, which is externally assessed and accredited at either Level 1 or 2 by AIM Awards, providing an additional qualification upon graduation.

Three to four times a year, the Nottingham Institute of Education invites local primary school classes to Clifton Campus for outdoor teaching experiences, primarily focusing on promoting the Primary Science element of the National Curriculum. These sessions, planned and delivered by BA Primary students, include mini activities at the balancing pond, woodland, and outdoor classroom. Forest School opportunities are offered to students within the Nottingham Institute of Education, and there has been growing interest from external schools and colleges seeking to use these facilities. The initiative has become immensely popular, with high numbers of students attending annually.



Figure 24 - Forest school teaching session with undergraduate students



Section 8: Marketing and Communication

8. Marketing and Communication

8.1. Marketing and Promotion

Efforts are being increased to raise awareness in the local community about the facilities available at Clifton Campus for public use and enjoyment. The NTU website provides detailed information about the campus, including the various facilities and green spaces open to the public. Additionally, the news section of the main website and NTU's Sustainability webpages offer updates on current and upcoming events, keeping the community informed and engaged with what the campus has to offer.

8.2. Communication Channels

NTU's internal communication systems include the MyNTU dashboard, which provides daily updates to all staff members about upcoming events and news within the University. Additionally, the University Calendar is available on the website for both students and staff to reference.

The campus's Green Flag status is actively promoted through various events such as Sustainability Awareness sessions, Sustainability in Practice tours, and Welcome Week activities. It is also featured on the NTU Sustainability web pages and Instagram channel.

The Sustainability Team maintains strong relationships with both staff and student communication teams to ensure that key messages and opportunities for involvement are widely advertised. The team manages its own social media accounts, while many other NTU accounts also help share news and event information.

NTU Estates also uses an Instagram account as a visual portfolio and maintains dedicated web pages to keep staff and students informed about any disruptions and updates on ongoing campus developments.

8.3. Educational and Interpretational Information

NTU's Sustainability webpages feature a dedicated section for Clifton Campus, where staff, students, and members of the public can access this Landscape Management Plan (LMP) and explore the numerous opportunities available on campus.

Information Boards are located throughout the Nature Trail and wider campus including educational content. The boards are due for upgrade from 2025.



Section 9: Management

9. Management

9.1. Management Structure

Clifton Campus is managed by the Landscape Services Team, which operates under the Estates Department. In collaboration with the Sustainability Team, they ensure that up-to-date information on best practices for environmental management is shared across the University.

The Director of Estates, with the support of the University Executive Team, oversees the management and implementation of the University's Environmental Policy.

The Landscape Services Team holds regular meetings with academic staff to provide updates and ensure alignment between the team's activities and teaching projects. The Sustainability Team and the Landscape Services Manager annually review this Landscape Management Plan.

9.2. Project Funding

For redevelopment projects, the University uses working capital for site work to support these initiatives. With each new building project, the University aims to incorporate new landscaped areas, which are guided by the Sustainability Team.

The Landscape Services Team manages an annual budget of circa £500,000 for all three campuses. A detailed breakdown of spending on larger projects can be found in the Implementation Plan in **Appendix B**.

9.3. Management Priorities

The current short-term aims for City Campus are:

- Review and expand rewilded areas across the campus.
- Embed existing and future engagement activities into campus management.
- Realign resources, from the wider team, in completing key tasks.

The long-term aims are:

- Increased creation of invertebrate, bird, bat and, small mammal habitats across the estate as part of the campus development.
- Secure additional funding to maintain our commitment to green spaces.

Appendices

Appendix A – Landscape Operations Service Level Agreement

Landscape Maintenance Operations

- 1. Mowing:** The Landscape Services (LS) team will manage & mow key areas from March to December each year. These areas will be kept to a height of between 25-75mm as appropriate. Where the weather significantly impacts these grass height parameters areas will be cut as soon as practicable and where weather & ground conditions permit.
- 2. Strimming:** the LS team will undertake this activity from March to December each year to maintain areas inaccessible by regular mowing i.e. around trees, obstacles and building perimeters. Subject to other work priorities the LS team aim to complete this task 3-6 times per year only.
- 3. Wildflower areas:** maintenance of these areas will be dependent upon local and species variations as well as prevailing weather and ground conditions. The maintenance of these areas, at Clifton Campus, sits with contractors unless agreed otherwise. Wildflower areas at Brackenhurst are managed by the LS team in conjunction with NTU ConSoc. All wildflower areas are subject to a cut-and-collect activity during late Aug/ early Sept.
- 4. Rewilded areas:** maintenance of these areas will be agreed/identified across all campuses to support biodiversity and plots may vary from year to year. These areas are left unmown from the end of April to early September after which they will be subject to a cut-and-collect process to tidy up for the Autumn.
- 5. Lawn edges:** where deemed necessary key areas will be subject to edging off with half-moons during the Autumn/Winter. Targeted areas will be subject to trimming back, with lawn shears, six times per year (Spring-Summer) to maintain a tidy edge along key ornamental beds.
- 6. Pruning:** Periodically prune and deadhead a wide range of plants depending on species and time throughout the full year.
- 7. Hedges/understorey mixes:** these will have their tops and sides pruned 1-2 times per year subject to location and potential visibility/safety issues as well as managing the health & vigour of hedges Any works during the bird nesting season (1st week of March - 1st week of Sept) will be subject to a bird nest survey 24 hours before any works commencing. All such surveys are to be signed, dated and kept for record.
- 8. Leaf clearance:** will be managed during the autumn & winter periods as part of overall landscape maintenance activities. However, due to the sheer volume of leaf fall, across all campuses, collection will be limited and prioritised accordingly.
- 9. Weed & pest control:** will be undertaken by a variety of methods in line with best practice which limits the use of pesticides to the absolute minimum. Such activities include mulching, hand weeding, and creative and selective planting. The use of herbicides will be through spot treatment and the number of applications will range between 3-6 times per year. From time to time, we will contract out broad-scale chemical control to specific areas i.e. grass sports pitches to improve the quality and integrity of the surfaces and this activity will be undertaken at times to keep impact, for users and the environment, to an absolute minimum.
- 10. Sports Pitches (Natural & Synthetic surfaces):** will be prepared, maintained, and set up to support on-campus student BUCS fixtures which will be supplied by NTU Sport. LS are committed to supporting all fixture commitments but will liaise with key stakeholders where prevailing weather and ground conditions may either (1) put the end user at risk and/or (2) put the integrity of the surfaces at risk and/or may cause long-term damage. Where a request

comes in for external use, we will consider the viability and potential implications whilst putting BUCS commitments as our primary consideration. The final decision on cancellations rests with the LS team and in particular the lead operative who maintains the NTU sports pitches. All grass sports surfaces will be reviewed, throughout the season, to determine any potential end-of-season renovations taking place soon after term 2. All decisions will also factor in available funds to do so.

11. **Arboriculture work:** All NTU trees and woodlands will be subject to a 3 yearly consultant's survey to determine the health, condition and potential risk posed (including any recommendations on replacements). Any recommended works will be prioritised as prescribed by the survey. The LS lead operative, who maintains the NTU trees and woodlands, will determine all other remedial works that may be required in between surveys and in particular as soon as practicable after any storms This lead operative will report back, to management, on any interim works, that requires attention, and/or the intervention of further reports and support required by external arboriculturists/consultants. All related works will be completed in line with BS3998:2010. At key locations, some trees fall within conservation areas and may also be subject to Tree Preservation Orders (TPOs). Any work to these trees should first be assessed and approved by the relevant local authority tree officers, by submitting a formal application with all supporting evidence here. No works shall proceed until consent has been granted. This consent can take up to 8 weeks to be approved unless superseded by any immediate or obvious risks.
12. **Glasshouse work:** the LS team oversee the production of a range of plant materials to support various landscape projects and seasonal bedding schemes across NTU. Volume varies, subject to available resources, but can turn around up to 30k of propagated material every year from seed, cuttings and plugs should resources allow.
13. **Snow clearance & gritting:** will be supported, by the LS team, during adverse winter weather and in conjunction with other key personnel in line with the Estates Gritting Procedure
14. **Litter control:** as part of its routine activities the LS team will collect litter from key landscape areas such as sports areas, shrub beds and lawn areas (inc. dog waste bins). This will be underpinned with support from FSA operatives who oversee overall litter control for all NTU external spaces (inc. waste bins)
15. **Green Waste Recycling:** as part of its wide range of activities LS produces a significant amount of green waste including leaves, tree, and shrub arisings as well as grass cuttings. Such waste is managed via our recycling compound to generate compost to be returned to the NTU landscapes where mulching is required. This process reinforces our commitment to recycling green waste, generated by our activities, as well as reducing the reliance on water consumption and application of pesticides.
16. **Watering:** will be determined by landscape-specific demand throughout the year and be driven by the prevailing climate conditions. Where practicable we will utilise measures to reduce water usage such as the application of water-absorbing gel, wetting agents, and mulches. In addition, we will procure and plant drought-tolerant species, in key settings and aspects,
17. **Living Walls:** will be managed and maintained, through monthly visits/inspections, by external contractors.
18. **Indoor Planters:** which fall under the remit of LS only will be subject to monthly visits to carry out watering, feeding and general health and condition checks. All internal planters that fall outside of this remit will not be subject to such visits.
19. **Sedum Roof:** will be visited 1-2 per year to remove debris and weeds and check general condition. These visits will be carried out in the Autumn-Winter.
20. **Water Features:** will be maintained and tended to with a combination of LS and contractors as well as academics & students to support coursework and research.

Appendix B – Implementation Plan

	Action	Target	Budget	Timescale	Owner	Status
Clifton Campus	Develop biodiverse and social areas at the Central Approach	Create a more welcoming approach at the central entrance with seating, trees, and a garden area to improve the student experience while providing valuable habitat.	TBC	TBC	ST	Approved, awaiting funding
	Develop student allotment	Continue to develop a student allotment first installed in Autumn 2014 to increase levels of engagement and the amount of organic fresh food produced.	£3k	2014-Present	ST	Professional gardener and volunteers maintain the allotment weekly. Polytunnel and raised beds upgraded in 2024.
	Continue path-laying activity	To provide a good substrate for the nature trail, as mentioned in previous Green Flag feedback.	~£20k	2024+	Alan Horgan	First 300m laid in summer 2014. Aspirations to complete the trail pending funding.
	General maintenance regimes	To maintain and improve where possible the Clifton campus for staff, students, and wildlife.	Landscape Services annual budget circa £453k	Ongoing	Alan Horgan	Ongoing, routine. An example is attached in appendix A.

Develop Clifton Campus to provide more teaching facilities	Expand the built environment on campus whilst enriching biodiversity through green infrastructure.	TBC	Ongoing	NTU Estates	Ongoing, see appendix C for development mapped.
Create a Habitat and Protected Species Action Plan for Clifton Campus	To guide future campus development and the ongoing management of the estate to protect and enhance biodiversity	None required	2024+	JM	Completed 2024 (See Appendix C for applicable habitats)
Implement rewilding areas across the Clifton campus	To increase the biodiversity of specific areas of grassland by allowing the area to rewild. This will result in the natural establishment of flora and increase the habitat provisions for invertebrates and amphibians.	TBC (signage costs for educational purposes)	2022-Present	Alan Horgan & ST	Rewilded areas were first implemented in 2022. Signage is due for deployment in 2025

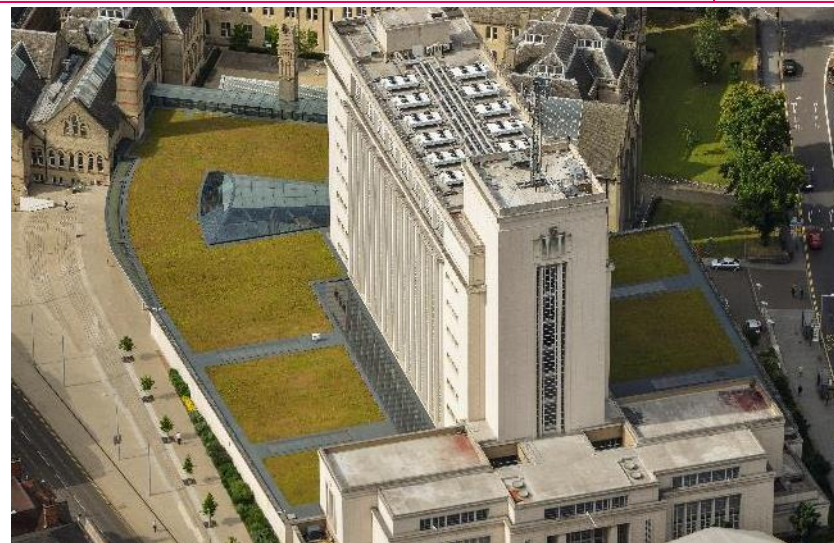
Appendix C – Habitat and Species Conservation Management Plan

Estate-Wide Actions

Action	Owner
Ensure compliance with all national and international legislation regarding biodiversity and the conservation of species and habitats.	S
Define and commission surveys to baseline NTU's biodiversity, produce habitat maps for the estate and set ambitious targets for biodiversity.	S
Prioritise the planting and management of native nectar and berry-producing species of local provenance across the estate's landscaping. Where non-native plants are used, ensure that they are carefully selected to enhance biodiversity.	L
Create new habitats through landscape management interventions or by using green and blue infrastructure, such as green roofs and living walls, within development footprints.	CD & L
Monitor and control any invasive species that are or become present within the estate; eradicate invasive species wherever possible.	L & S
Review the estate for habitat fragmentation; improve connectivity within the estate and within the wider landscape by strategically planting native tree species and creating wildlife corridors.	L & S
Where possible, hedgehog highways will be installed in physical barriers that affect connectivity and access e.g., fencing.	S
Continue to install and monitor bat boxes, bird boxes, bird feeders, hedgehog houses, insect hotels, hibernacula, and log piles across all campuses.	CD, L & S
Halt all use of peat-based products in the university's Landscaping Services activities from spring 2023.	L
Engage with staff, students, and visitors on the importance of biodiversity and actions that can be taken to conserve and enhance biodiversity within the estate e.g., using signage and citizen science monitoring projects.	S
Annually report on biodiversity actions undertaken across the estate within the Sustainability Report, which is publicly available on the NTU website.	S

Built Environment

Action	Owner
Ensure all new development projects minimise impacts on biodiversity, aiming to deliver a minimum of 10% biodiversity net gain.	CD
Improve the biodiversity of amenity grassland and formal greenspaces through targeted interventions, including reduced management to allow rewilding and wildflower planting, for the benefit of invertebrates, birds, hedgehogs, and amphibians. Rewilded areas are only to be managed through cut-and-collect in the autumn, to achieve & maintain low soil fertility.	L & S
Include bird and bat boxes in the vicinity of or integrated within the development of all new buildings and extend the installation of bird and bat boxes on existing buildings at all university campuses, to provide urban breeding and nesting habitats.	CD
Continually monitor and evaluate the impact of any development on biodiversity, to identify and address any negative impacts and improve conservation efforts.	CD & S
Aim to use sustainable building materials wherever possible, and consider the environmental lifecycle of buildings, to reduce the impact of any construction and preserve natural habitats.	CD



Woodland & Scrub

Action	Owner
Increase the species and structural diversity of woodlands, by targeting woodland management to create a diverse range of habitats e.g., allowing ground flora to grow by selectively thinning, planting suitable species e.g., those listed within the National Vegetation Classification (NVC) or translocating local leaf litter to encourage flora establishment in suitable habitats.	ARES & L
Create additional habitats in woodlands, such as log piles and leaf piles, to provide shelter for invertebrates, amphibians, and hedgehogs.	L
Standing dead wood and fallen timber will be left in situ unless they pose a safety hazard to footpaths, roads, or highly public areas. This will provide biodiversity benefits to a variety of species including invertebrates and birds.	L
Where practicable and safe to do so, as much standing dead wood will be left as possible and tree stumps will be cut as high as feasible to encourage invertebrates that are dependent on dead or decaying wood.	L
Proactively monitor potential external threats to tree stock, including the national spread of tree diseases; undertake pre-emptive action if required.	L
Install nesting boxes for various bird and bat species to encourage breeding populations and provide woodland shelter.	L & S
Protect all veteran trees within the estate and undertake regular condition inspections to determine sensitive management requirements and manage appropriately.	ARES & L



Non-Agricultural Grasslands

Action	Owner
Extend the area of diverse neutral grassland habitat, by reducing the area of amenity grassland across the estate.	L
Continue to review and expand rewilded and wildflower-planted areas within the estate, by reducing the management of grassland areas and planting local provenance native wildflower seed mixes of pollen and nectar-producing species.	ARES, L & S
Mow grassland areas annually from late summer, to allow wildflowers to set seed and propagate. Cuttings will be collected and removed to achieve and maintain low-fertility soils.	L
Encourage species diversity by reducing soil fertility and introducing local province native species such as yellow rattle.	L
Before the management of grassland, checks will be undertaken for any hedgehogs or other wildlife in the area, to reduce the risk of harm from mowing and strimming equipment. "Check for hedgehogs" warning labels are present on all grounds maintenance equipment as a reminder for staff.	L



Wetland & Water

Action	Owner
Continue to improve the ecological value of ponds across the Brackenhurst campus through targeted management.	ARES, HF, CD & S
Provide a buffer margin of wildflowers or grass meadows around ponds, to provide habitats for wildlife, reduce sediment inputs and reduce excess nutrients.	ARES, HF & L
Promote habitat connectivity between wetlands and hedgerows or woodland edges, to provide improved green network routes for amphibians and mammals.	ARES, HF & L
Provide submerged, floating, and marginal vegetation within freshwater pond habitats, to support invertebrates, amphibians, and birds.	ARES, L & ARES
Create hibernacula in key locations close to wetland habitats, to provide refuge for amphibians.	ARES & L
Ensure that all ponds on the estate have sloping sides or log and stone piles, to ensure that hedgehogs and other wildlife can exit the water easily.	ARES & S



Appendix D – Clifton Campus Habitat Map

