



Nottingham Trent
University

NTU Virtual Exchange Report

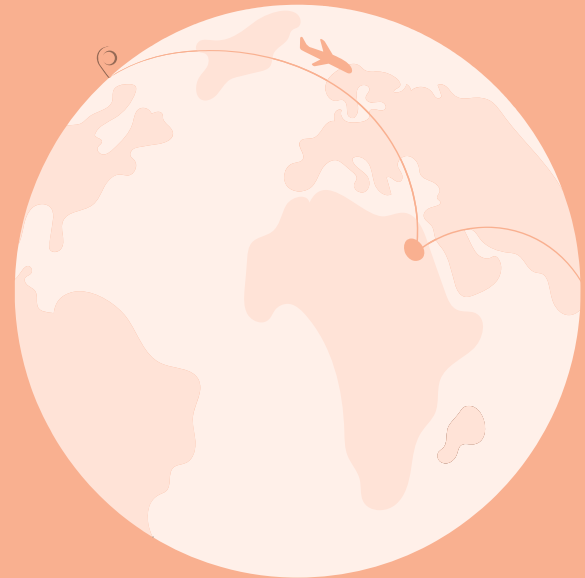


Table Of Contents



Our cultures



**Covid long lasting
change**



**The green impact
of the pandemic**



**Creating a sense
of inclusive
community**



**The changed
mindset of
employers**



**The impact on the
community**

OUR TEAM



Michael Milliere

Canada



Anthony Diaz-Munoz

United Kingdom



Andrei-Mihail Dodea

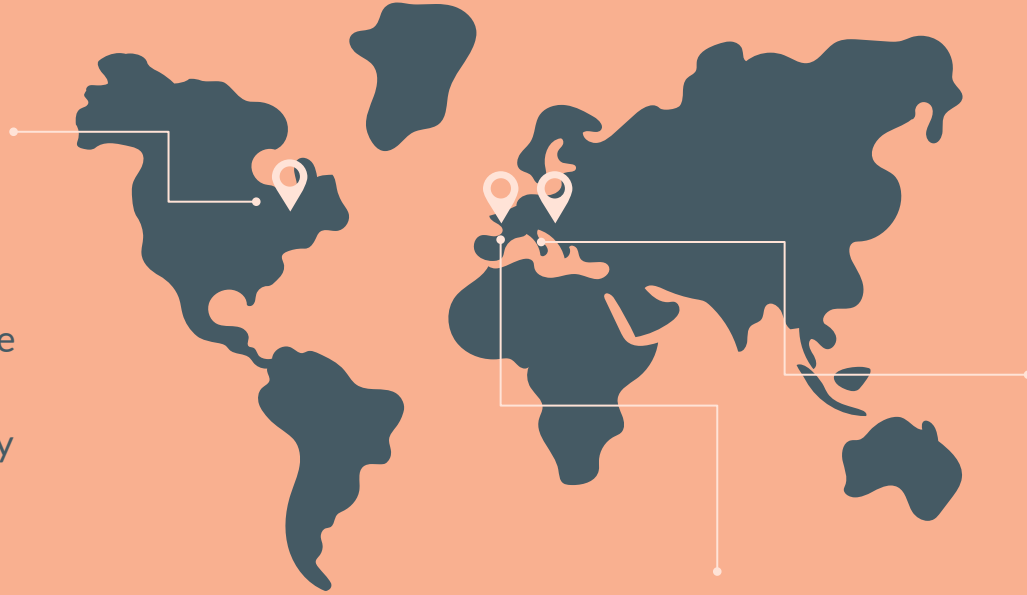
Romania



Our Cultures

Canada

- The 2nd largest country in the world!
- Its capital city is Ottawa
- Poutine is Canada's national dish



Romania

- Its capital city is Bucharest
- The Romanian language is 1700 years old

UK

The UK is made up of 4 countries

Covid Lasting Change



Green Impact Of The Pandemic

The UK Implemented a bike scheme which allowed people to get a credit when fixing their bikes and when buying them. This program can affect the environment in a positive way because before would be using more environmentally friendly ways to get to work.

However there has been a lot of negative effects on the environment due to Covid-19. We are generating a lot more waste from all the packages being sent to our homes and from many items like food having to have additional plastic wrap to protect them. Another big item that is generating a lot of waste is all the face masks people are going through.



Creating a sense of an inclusive Community

With an online community you are able to connect with more people with your specific interests that you may not find easily in person.

While online communities have been able to bring people together the experience is not the same as meeting people in person. You kind of miss the ability to develop deeper conversations while meeting online.

Even though connections may be harder to develop it is worth it to try and build these communities and connect with others.



The Changed Mindset Of Employers

The pandemic has shown everyone that if need be, we can do our work online. In the long run this will have a few effects such as:



01
As employees we will raise our standards on remote work and have more benefits regarding remote work.

02
Employers will think twice before considering any physical mobility for a meeting.

03
More hygienic meeting environments.

04
Less office space since employers will likely offer mostly work from home benefits.



The Impact on the Community

As an effect of everything happening with the pandemic, our communities have changed.



Within our communities we have seen more radicalization, more nationalist extremism which is unlikely to go away in the near future. Our communities are focusing more on how to produce things locally, but at the same time everyone is more aware of the effects that something happening on the other side of the globe can have.



Due to the media coverage, part of the population is now really reluctant to take the vaccine. This may slow down our progress in getting back to normal, but just as well it may be something long lasting, those people refusing to ever get vaccinated.



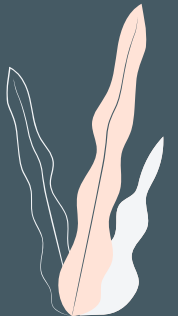
Due to being so far apart, we have learned to appreciate our community more. Even though we may not be as used to meeting people and socializing as before, we are now much closer to one another, we now want to be our communities more than ever.



Conclusions

In conclusion the pandemic has definitely affected how we function globally, it may have created a lot of new problems, but at the same time it may be one of the best opportunities to reset the trajectory of humanity, to reshape the path we attempt to walk globally.

COVID-19 may have been one of the biggest hurdles humanity has faced so far, but at the same time it's the biggest opportunity we have ever gotten to take the time and think deeper about our lives, our meaning, our goals and where we are going as humans, as communities, as countries and as global citizens.



**THANK
YOU!**

