

UNIVERSITY OF THE YEAR

THE AWARDS
2017
TIMES
UNIVERSITY
EDUCATION

Starting at NTU 2018



www.ntu.ac.uk/startingatntu

NOTTINGHAM
TRENT UNIVERSITY





Your place at Nottingham Trent University

This guide will help you prepare for your time here. It's important that you read all the information and use the checklist on page 3 to make sure you have done everything you need to do.

Contents

Welcome to NTU.....	2
Your checklist.....	3

Before you arrive

Start your enrolment online.....	4
Sort out your funding.....	5
Your course induction.....	6
Arranging accommodation.....	7
Get your support in place.....	8
Start making friends.....	10

When you get here

Completing your enrolment.....	12
What to do after enrolment.....	13

Settling into life at NTU

Staying up to date	14
Nottingham.....	16
Your Students' Union.....	18
Welcome Week.....	20
Getting around.....	22

Useful information

University contacts.....	24
Maps.....	26

Welcome to NTU



Congratulations on your place at Nottingham Trent University (NTU).

You are joining a university that prides itself on the success of its graduates in their academic studies, their extracurricular activities, and their careers. We are an inclusive community, with students and staff from over 160 countries and a wide range of backgrounds.

You will be taught by the best at NTU. Our teaching quality is both nationally and internationally recognised and our staff will support and encourage you, throughout your time here and beyond. Indeed, the government's recent Teaching Excellence Framework confirmed the standard of teaching at NTU as gold-rated – their highest accolade.

We're focused on your future from day one. Our courses will inspire you, and our focus on employability means that you will graduate with a CV that will impress your future employers.

Your time at NTU will give you lots of opportunities to develop your life experience and your personal networks. I hope that you make the most of everything the University has to offer.

I look forward to welcoming you, and I wish you all the best for your studies with us.

Professor Edward Peck
Vice-Chancellor



Congratulations on all your hard work – you've done it.

You're officially a student at Nottingham Trent University, which means you've automatically become a member of the award-winning Nottingham Trent Students' Union (NTSU).

With a building on three of our campuses, over 110 societies to join, and a whole host of personal development opportunities on offer, there's lots to look forward to from NTSU. We also provide representation in various forms for all NTU students, and have a full-time Postgraduate Officer here to represent you while you study. In this booklet you'll find more information on exactly how you can get involved with what we do.

If you have any questions, concerns or comments about how we can support you during your time at NTU, just get in touch with us. In the meantime, we look forward to getting to know you better, and we wish you all the luck for the year ahead.

Bradley Fox
President
Nottingham Trent Students' Union (NTSU)

Your starting at NTU checklist

Use this list to keep track of what you've done and what you still need to do before you join us in September.

1 Before you arrive

- Start your enrolment online (page 4).
- Sort out your funding (page 5).
- Find your course induction timetable and complete your pre-arrival task (page 6).
- Arrange your accommodation (page 7).
- Let us know if you have any additional support needs (page 8).

2 When you get here

- Complete your enrolment and collect your NTU student card (page 12).

3 Settling into life at NTU

- Find out more about what student life in Nottingham is like, the best ways to network, the Students' Union, the city of Nottingham itself, and how to get the most out of your time here. See pages 14 to 23 for more information.



Start your enrolment online

Enrolment is your official registration as a student with the University. Most stages of the enrolment process can be completed online, but the final stages take place once you arrive on campus.

Please ensure that you complete your online enrolment before you arrive.

Why should you enrol?

You need to enrol with us for a number of reasons.

- Completing your enrolment in person releases your funding.
- It can confirm your eligibility for council tax exemption (fulltime, fully enrolled students only).
- It allows you access to NOW – the online learning environment at NTU – which holds your timetable and module information.
- It allows you access to University buildings and your student email.

If your course requires you to complete a Disclosure and Barring Service (DBS) or other fit-to-practice check, you must complete this prior to enrolment. If you haven't done so, you won't be able to fully enrol on your course. Visit www.ntu.ac.uk/dbs to check if this applies to you.

How to enrol

1. Find your NTU ID

You will find your NTU ID number on the confirmation letter and confirmation email you received when your place at NTU was confirmed. This is your student ID number (e.g. N0123456).

2. Get your password and complete your online enrolment

Visit www.ntu.ac.uk/enrolment and follow the “get or reset your password” link to retrieve your password. Use this password along with your NTU ID number to log into online enrolment. If you cannot find your NTU ID, or have any problems with online enrolment, contact MyNTU Support on **+44 (0)115 848 2855** between 9 am and 4.30 pm (Monday to Thursday), or 9 am and 4 pm (Friday). You can also email MyNTU Support at REG.mytnusupport@ntu.ac.uk for further advice.

Sort out your fees and funding

You'll need to research funding opportunities and make arrangements to pay your fees before you arrive at NTU.

Paying your tuition fees

You can pay your fees in one go or arrange to pay in instalments using our online payment system. Visit www.ntu.ac.uk/onlinepayment for more information.

If you haven't set up a payment arrangement before your course starts, you'll only receive temporary enrolment status, and you'll be given notice to arrange your payment.

If you have set up an installment arrangement prior to enrollment and your card details have changed then please contact the Finance Office on **+44 (0)115 848 6500** or email finfinanceincomedebtmanagement@ntu.ac.uk. You can also see the Finance Team at enrollment to update your card details.

Funding your studies

There are a number of funding opportunities available to postgraduate students. These include a postgraduate loan scheme (see below), University scholarships, and funding from public bodies.

Postgraduate loans

Postgraduate loans are available for Masters degrees. For students eligible to apply through Student Finance England, the maximum loan available for the whole of your course is £10,609. It is paid directly to you and can be used to contribute towards fees, maintenance costs, or other expenses.

Once your application for the postgraduate loan has been approved by Student Finance England, the loan will be released to you once you have

completed your enrolment – including setting up an instalment arrangement to pay your tuition fees – and collected your student card. The loan is paid in three termly instalments. If the course lasts two or more years, the loan is spread over its duration. Visit www.ntu.ac.uk/pgloans for more information on both course and personal eligibility for these loans.

Students from Wales, Scotland and Northern Ireland are advised to consult their national student finance service for further information about loans for postgraduate study.

EU students can apply to Student Finance England for postgraduate loans. See www.ntu.ac.uk/pgloans for further information about eligibility.

Visit www.ntu.ac.uk/pgadvice for ideas about where to look for other sources of funding and top tips on making a funding application.

Contacting our Student Financial Support team

For general enquiries about Student Finance, you can contact our service by emailing financial.support@ntu.ac.uk or calling **+44 (0)115 848 2494**. If you're studying at our Creative Quarter Campus, you can access financial support by emailing hello@confetti.ac.uk or calling **+44 (0)115 952 2075**.

Your course induction

Your induction is your opportunity to meet tutors and fellow students, and to get a flavour of your course and how you'll be taught.

Get ready to start your course in three simple steps:

1. Get your induction timetable

Visit www.ntu.ac.uk/induction to find out what your course induction includes.

Download your induction timetable and plan your other activities around it. It's crucial that you attend all of your course induction activities, so make sure that you know where you need to be and when.

2. Complete any pre-arrival tasks

Some courses give you a task to complete before you arrive at NTU.

Go to www.ntu.ac.uk/induction to find details of your pre-arrival tasks.

3. Your course timetable

Your full course timetable will be available on NOW once you arrive and complete your enrolment.

Visit <https://now.ntu.ac.uk> for more information.

Remember that some of our business, education and art and design courses start earlier than others.

To find out more, visit:

www.ntu.ac.uk/nbs-pgdates for business courses

www.ntu.ac.uk/edu-pgdates for education courses

www.ntu.ac.uk/edu-pgdates for art and design courses

Arranging accommodation

If you need to arrange somewhere to live, our Accommodation team can help.

We know that as a postgraduate, mature or international student, your needs are different.

We therefore offer a range of accommodation options that meet those needs, including:

- dedicated flats for postgraduate and mature students



Look out for this symbol when browsing our accommodation.

- studio flats that include kitchen facilities
- a limited number of one-year contracts in some of our residences
- flexible Homestay accommodation
- Trent Lets, an NTU – run lettings agency
- an accreditation scheme run by Unipol for private sector lettings.

We're here to advise you and help you find the best accommodation. Contact us to discuss your options.

Tel: +44 (0)115 848 2894

Email: accommodation@ntu.ac.uk



If you need accommodation, you should try to arrange this before you arrive in Nottingham so that you can start University life free of worries over where to live. Please contact us for further advice and guidance on all aspects of accommodation, including our new bespoke flexible contracts for certain cohorts.

Get your support in place

Our Student Support Services team provides information and advice to help you study effectively and make the most of student life. If you have a diagnosed disability, require specialist support or need practical adjustments, it's important that you tell us on your application, before you arrive at NTU. We can provide advice and guidance with your transition to NTU and do our best to ensure your support is in place at the start of your studies.

Disability Support:

The team can provide specialist support for the following.

- **Dyslexia or other specific learning difficulties**
Visit www.ntu.ac.uk/dyslexia or call **+44(0)115 848 4120** for more information.
- **A disability, physical or sensory impairment, or long-term health condition**
Visit www.ntu.ac.uk/disability or call **+44(0)115 848 2085** for more information.
- **An autistic spectrum condition**
Visit www.ntu.ac.uk/disability or call **+44(0)115 848 2085** for more information.
- **A mental health difficulty, such as depression or anxiety**
Visit www.ntu.ac.uk/mentalhealth and <http://www.ntu.ac.uk/wellbeing> or call **+44(0)115 848 2085** for more information.

If you're studying at our Creative Quarter Campus, you can access specialist support by emailing hello@confetti.ac.uk or calling **+44 (0) 115 952 2075**.

Get in touch

If you would like to know more about the support services, or to discuss your individual requirements, please get in touch with the relevant team.

Arranging additional funding to pay for your support

You may be able to apply for Disabled Students' Allowances (DSAs). These are grants that are available to students with additional needs. Please visit www.gov.uk/disabled-students-allowances-dsas/overview for more information.



Other specialist support



Advice for student parents

If you need to manage your studies around family life, take a look at www.ntu.ac.uk/studentsservices to find information for students with caring responsibilities. This includes details of any financial support you may be entitled to.

Worried about settling in?

Starting university is a big step and it's natural to feel nervous about meeting new people or leaving home. Visit www.ntu.ac.uk/settlingin for ideas about what to expect in your first few weeks and our advice in the leadup to starting at NTU.

Staying healthy at NTU

You are advised to register with a local medical practice in Nottingham while studying at NTU. Visit www.ntu.ac.uk/healthcentres for further information.

Have you had your MenACWY vaccination?

NTU is supporting the NHS campaign encouraging all new students to protect themselves against meningitis. We strongly advise you to get the new MenACWY vaccine from your GP before you arrive, to make sure you are fully protected against meningitis. Visit www.nhs.uk/conditions/vaccination and search for MenACWY.

Visit www.meningitisnow.org/howwehelp/campaigns/uni/supportingstudents/ for more information about meningitis and looking after yourself and others.

Visit www.ntu.ac.uk/healthyntu for more information on staying healthy at NTU.

Contacting our Student Support Services team

For general enquiries about the support available, contact our services by emailing student.support@ntu.ac.uk or calling +44 (0)115 848 6060. You can also visit www.ntu.ac.uk/studentsservices for more information. If you're studying at our Creative Quarter Campus, you can access specialist support by emailing hello@confetti.ac.uk or calling +44 (0) 115 952 2075.

Start making friends

You don't have to wait to arrive before joining the NTU community – get involved with our social channels to meet other students who may be staying in the same accommodation or studying the same course.



Join our Facebook groups

We have specific Facebook groups for different groups of students, including postgraduate students, International students, local students and mature students, helping you connect with others like you.

Visit www.ntu.ac.uk/getconnected to find your groups and join the conversation.

Take a look at The Student Room

There are postgraduate forums, plus a more general NTU forum, available on The Student Room website. It can be a great way to find out more about studying at postgraduate level, so visit www.thestudentroom.co.uk/forums to find out more.



Join our social media community to keep up to date with all the news, views, videos and photos from around campus, and feel free to get in touch with any questions you might have. You can also take part in our weekly Picture of the Week competition using the hashtag **#NTUPOTW** on Instagram or Twitter to share your university experience.



Follow us on Twitter for current student news and all things NTU:
@TrentUni @NTUStudentNews



Like us on Facebook for daily stories, news and events:
nottinghamtrentuniversity



Follow us on Instagram to explore the best of Nottingham and our campuses:
nottstrentuni



Find out more about life at NTU, our students, our courses and our campuses:
nottinghamtrentuni

Head to **www.ntu.ac.uk/socialmedia** to find a list of all social media accounts, from academic schools to student groups.

Please note that there are a number of active unofficial social media accounts that are not endorsed by NTU or NTSU. We suggest using the links on our webpage to ensure you find our official accounts.

Completing your enrolment

Once you arrive at the University you'll need to complete the enrolment process and collect your NTU student card.

Note: It's essential that you enrol at the University. Not enrolling may result in your access to NTU buildings and facilities being suspended.

You can complete your enrolment at any of our campuses. For example, if you study at the Clifton Campus but live in the city, you can drop into our City Campus enrolment location.

You can complete your enrolment at the following locations.

	City Campus	Clifton Campus	Brackenhurst Campus
	Newton and Arkwright buildings	Clifton Pavilion	Brackenhurst Library
Friday 21 September	10 am – 6 pm	10 am – 6 pm	10 am – 4 pm
Saturday 22 September	10 am – 5 pm	10 am – 5 pm	10 am – 3 pm
Sunday 23 September	11 am – 3 pm	11 am – 3 pm	11 am – 2 pm
Monday 24 September	9 am – 5 pm	9 am – 5 pm	11 am – 1 pm
Tuesday 25 September – Friday 28 September	10 am – 4 pm		
Monday 1 October – Thursday 4 October	10 am – 4 pm		

Outside of these hours; you can collect your NTU student card from the following locations on weekdays:

- **City Campus** – Student Services Centre, Central Court, Newton building, Level 0
- **Clifton Campus** – Student Services Centre
- **Brackenhurst Campus** – Brackenhurst Library

Please refer to the maps on pages 26 to 29 for location details.

What to do at enrolment

1 Collect your NTU student card

Your student card is your key to university life. As well as being an ID card, it's your Students' Union membership card, access card, library card, sport and fitness membership card, and your bus travel card. You can also use your student card to pay for purchases in our Taste outlets on campus, and for library, printing and photocopying costs.

2 Register with the Student Health Centre

There are medical health centres based at both the City and Clifton Campuses. Students studying at Brackenhurst usually register with the Southwell Medical Centre.

After you've picked up your student card, you'll have the chance to sign up to a health centre.

What to do after enrolment

1 View your timetable

Once you've completed your enrolment, log on to <https://now.ntu.ac.uk> to get your full course timetable.

2 Take advantage of student discounts

A range of student discounts are available at the enrolment events to make starting University that bit easier. Add discounted extras on to your NTU student card, such as bus travel. Visit www.ntu.ac.uk/ucycle to hire a University bike to get around campus, or buy discounted home contents insurance specifically for students.



Staying up to date

We know how important it is for you to excel in your life at university. At NTU, you have access to sector-leading IT services and support.



*Subject to terms and conditions

IT resources

- 24/7 access to on-campus IT resources, including loan laptops*.
- Free Wi-Fi and Internet access for your own devices* by scanning for **ntu-wifi** and using your N-number and password to log in.
- Free Microsoft Office 365*.
- Access to specialist software relevant to your course.
- MyNTU student portal and app (iOS and Android) – your timetable, PC availability, news etc.
my.ntu.ac.uk
- NOW – NTU's online learning environment.
- Secure self-service printing, and while-you-wait professional print shops.
- Dedicated IT help and support.

Contact us

If you need to know anything about IT Services at NTU, or you need IT help, just visit <https://support.ntu.ac.uk> to get in touch.



Follow us on Twitter: **@NTUServiceDesk**



Like us on Facebook: **/NTUServiceDesk**



Nottingham

Whether you're living here or commuting during your studies, Nottingham is a city with students at its very heart. Being home to two major universities, it has a wide range of cultural, social and sporting venues.

Some great places to try

The Alley Café – nestled down an alley off Angel Row, this hidden gem serves a range of tasty vegetarian delights and delicious wheat beers.

Victoria Market – located upstairs in the Victoria Centre, this indoor market sells loads of high quality and affordable fresh food, as well as other traditional market fare.

The Pudding Pantry – great homemade desserts served alongside artisan coffee, located in the Trinity Square area.

Broadway – a fantastic independent cinema in Hockley showing a mix of mainstream, foreign and arthouse films. Also home to two lovely café-bars which regularly host themed nights, live music and quizzes.

The Cornerhouse – home to a 14 screen cinema – including a massive IMAX screen – as well as bars, restaurants, and a casino.

Las Iguanas – just a short walk away from Old Market Square is this excellent Latin American restaurant with a fantastic range of cocktails.





Here are some useful websites to help you get to know the city a little better.

Nottingham City Council – get the low-down on everything you need to know about the city from their handy student guide.

www.nottinghamcity.gov.uk/students

Nottingham City Transport – the city bus company NCT runs the Go2 Uni buses between the City and Clifton Campuses, and has special deals for students.

www.nctx.co.uk

Nottingham Tram – Nottingham’s award-winning tram system services many different areas across the city, and runs close to lots of our NTU residences.

www.thetram.net

Experience Nottinghamshire – the official tourism website of the county has lots of tips about things to do in Nottingham, as well as information about events taking place throughout the year.

www.experiencenottinghamshire.com

LeftLion – local free magazine focusing on music, arts, entertainment, current affairs and general Nottingham culture.

www.leftlion.co.uk

Visit www.ntu.ac.uk/startingatntu to find out more.

Your Students' Union

When you enrol at NTU, you'll automatically become a member of Nottingham Trent Students' Union (NTSU).



Your Students' Union

From entertainment and activities to support and representation, the Students' Union is here to ensure you get the most out of your university experience.

Societies and sports clubs

Joining a society or sports club is a great way to develop new skills and meet new people with similar interests, and NTSU has more than 150 of them to choose from. You can find an A—Z list of our societies at

www.trentstudents.org/societies – alternatively, visit www.trentstudents.org/sport to see all of our sports clubs.

Entertainment

Our entertainments programme is one of the most diverse in the country, offering everything from pub quizzes to day trips around the UK.

Visit www.trentstudents.org/entertainments for a full list of all our events and activities.

Volunteering

If you're looking to give back to the local community, getting involved in our volunteering programme is a great way to do so. Student-led projects that allow you to create your own volunteering programme and micro-volunteering activities you can get involved on an informal basis are just some of what's on offer. Visit www.trentstudents.org/volunteering for all our up-to-date volunteering opportunities.

You can also get involved in our Raising and Giving (RAG) activities and help to raise vital funds for local charities. Visit www.trentstudents.org/rag for more information.



Support and Representation

NTSU runs a free and confidential Information and Advice Service (IAS). You can access IAS on our City, Clifton and Brackenhurst Campuses. It operates independently of the University, and offers impartial advice and support on everything from money matters to mental health. Go to www.trentstudents.org/advice to find out more.

The Students' Union also has a number of people who are here to represent you and your views during your time at NTU. From your Executive Officers who represent you on everything from your education to your society involvement, to your Academic Representatives – who'll voice your opinions on your School or course – they're here to make sure your voice is heard. We also have a full-time Postgraduate Officer to represent you. Visit www.trentstudents.org/youreps to find out more.

City Campus: A 30ft climbing wall, a dedicated dance studio, and a 2,000-capacity nightclub and event space are among the highlights of NTSU's City Campus building. There's also an SU shop and a Wi-Fi-enabled bar and café, and it's also where Shak – your Postgraduate Executive Officer – is based. Make sure you pop in and say hello!

Clifton Campus: The Point – our bar, diner and nightclub space – is at the heart of campus. The SU shop is an ideal place to pick up your daily essentials, and the sporting facilities at the Lee Westwood Sport Centre are second to none.

Brackenhurst Campus: Our Brackenhurst Campus is truly unique, with a Grade II listed building set in acres of beautiful countryside. It also has lively social spaces in the form of the Brack Bar, and our campus café, The Orangery.

Keeping up to date

Visit www.trentstudents.org for more information about NTSU.



www.facebook.com/Trentstudents



[@trentstudents](https://twitter.com/trentstudents)



[@trentsu](https://www.instagram.com/trentsu)

Welcome Week

Welcome Week is for all our new students, and this includes our new postgraduate students – whether you've studied here before, or are new to NTU.

Your Welcome Week guide

All the events can also be found online on our interactive Welcome Week events website. Visit www.ntu.ac.uk/welcome to take a look.

You'll be sent a Welcome Week guide either by post or email in September. Inside, you'll find all the events that are going on throughout the week – including some that are organised specifically for postgraduate students – and advice on how to get involved.

The website makes it really easy to find the right events for you, allowing you to search events by keyword, category, campus, date, and more.



Follow us on Twitter for all the latest news.



@NTUWelcomeWeek



Don't miss these essential events

Postgraduate Welcome to NTU talks

This is your formal introduction to the University as a postgraduate student. You'll hear from our Vice-Chancellor, the President of the Students' Union, and other special guests. Details of this event can be found in your course induction schedule, or in your Welcome Week guide.

Postgraduate Students' BBQ

This is a great way to meet other like-minded students from other courses and Schools from around the University. You can find further details in your Welcome Week guide, or by visiting www.ntu.ac.uk/welcome for a full list of events.

As a postgraduate student, your course may start a few weeks before Welcome Week begins, but please be assured that you can still get involved in Welcome Week activities if they don't clash with your existing course commitments.



Small and Friendly events

If you'd prefer something a bit more laid-back, try our Small and Friendly events during Welcome Week.

These events are designed to be relaxed and informal, and are aimed at those who feel more comfortable in smaller groups. Group sizes are restricted and most events are based around an activity, so you'll have something to occupy you while you're getting to know other students.

To find out more about our Small and Friendly events, search for the Small and Friendly group on Facebook. You can also visit the Welcome Week website at www.ntu.ac.uk/welcome where Small and Friendly events can be searched by category.



Getting around

Nottingham has an excellent public transport system, making it easy to get around.

How to get around

Nottingham has a tram network, with stops around the city centre and close to some of our halls of residence. Visit www.thetram.net for further information.

Travel to our Clifton Campus

If you're studying at our Clifton or Brackenhurst campuses, the easiest way to reach the city is to catch the bus. Our Clifton Campus is served by the number 4 Go2Uni bus, which takes around 20 to 25 minutes. The bus stops in the city centre, as well as at Nottingham train station.

Travel to our Brackenhurst Campus

If you're studying at our Brackenhurst Campus, you can travel to Nottingham city centre using the number 100 bus service. There is a bus stop just outside Brackenhurst, and travel to the city centre takes around 45 minutes.

Visit www.nctx.co.uk for timetables and information about student deals.

Parking at our campuses

Visit www.ntu.ac.uk/gettinghere to find out more about travelling by car and parking at our campuses.





Useful information

University contacts

If you need to speak to us before you arrive or after you've started, the following contacts are a good place to start.



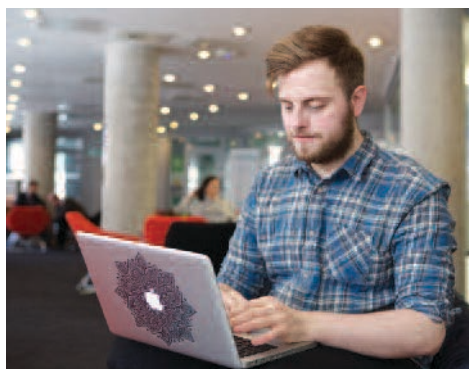
Accommodation

Student Accommodation Services

Tel: +44 (0)115 848 2894

Email: accommodation@ntu.ac.uk

www.ntu.ac.uk/accommodation



Enrolment and password queries

My NTU Support

Tel: +44 (0)115 848 2855

9 am to 4.30 pm (Monday to Thursday),

9 am to 4 pm (Friday).



Career development

Employability

Tel: +44 (0)115 848 8638 (City Campus)

+44 (0)115 848 3414 (Clifton Campus)

+44 (0)115 848 8649 (Brackenhurst Campus)

Email: employability@ntu.ac.uk

www.ntu.ac.uk/employability

Student Health Centres

City Campus Student Health Centre

Tel: +44 (0)115 848 6481

Clifton Campus Student Health Centre (Sunrise Medical Practice)

Tel: +44 (0)115 848 3100

Southwell Medical Centre (not affiliated with NTU)

Tel: +44 (0)1636 813 561

Security

Security Team

City Campus tel:

+44 (0)115 848 2468

Clifton Campus tel:

+44 (0)115 848 6600

Brackenhurst Campus tel:

+44 (0)115 848 5262



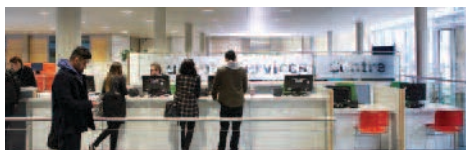
Visit www.ntu.ac.uk/usefulcontacts for a further list of useful contacts.

Study support

Your Library

Tel: + 44 (0)115 848 2175

Live chat: www.ntu.ac.uk/librarychat



Student Services and support

Student Services

Go to www.ntu.ac.uk/studentsservices to ask questions and find useful information and advice.

Care leavers' support

Tel: +44 (0)115 848 3290

Email: transition.support@ntu.ac.uk

Disability support

Tel: +44 (0)115 848 2085

Email: disability.support@ntu.ac.uk

Dyslexia support

Tel: +44 (0)115 848 4120

Email: dyslexia.support@ntu.ac.uk

Student Financial Support

Tel: +44 (0)115 848 2494

Email: financial.support@ntu.ac.uk

International student support

Tel: +44 (0)115 848 2631

Email: int.support@ntu.ac.uk

Mental health support

Tel: +44 (0)115 848 2085

Email: mental.health@ntu.ac.uk

Creative Quarter Campus support

Tel: +44 (0)115 952 2075

Email: hello@confetti.ac.uk

Maps

City Campus



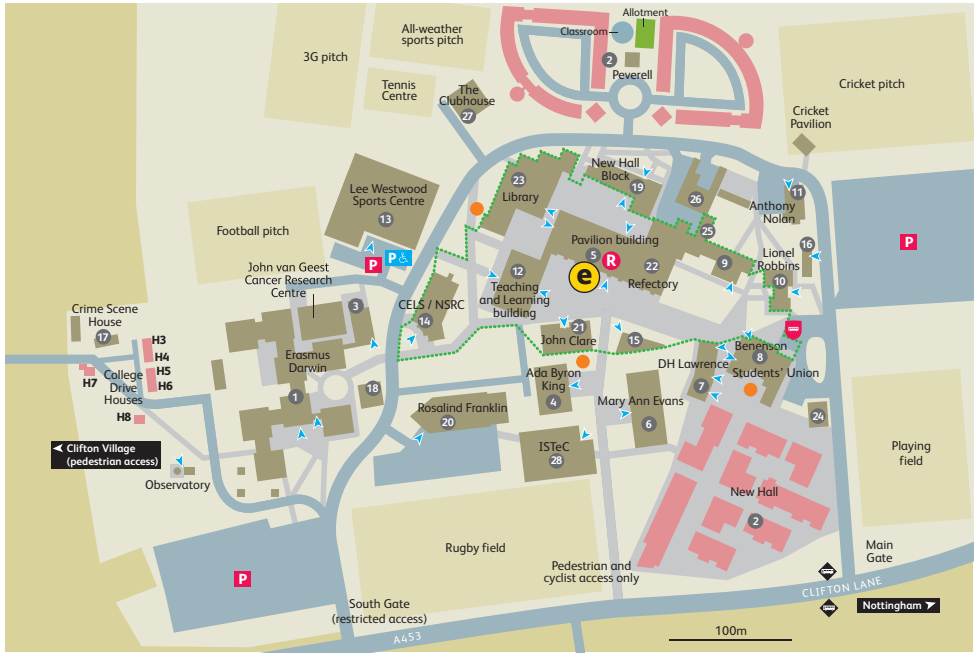
One-way street	Main reception
Pedestrian street	Student residences
Buses, taxis, cyclists and blue badge only	University buildings
Public car parks	Tram route and stops
Entrance	No entry
Entrance with wheelchair access	Go2 Uni bus stop

Enrolment

50 Shakespeare Street.....	26
Academic Registry	9
Admissions	9
Arkwright building.....	10
Barnes Wallis building.....	17
Belgrave Centre.....	13
Bonington building.....	8
Bonington Gallery	8
Bookshop	1
Boots Library.....	3
Central Court	14
Centre for Broadcasting & Journalism.....	23
Chaucer building.....	1
City Sports Centre.....	2
Coffee bars.....	1 8 14
Djanogly International Centre (DICE).....	6
Dryden Centre.....	9
Employability Centre.....	14
Finance Office.....	9
Global Lounge.....	1
Health Centre.....	19
Human Resources.....	9
International Development Office.....	9
IoD Business Centre	18
Maudslay building.....	12
Music Centre.....	25
Newton building.....	11
Nottingham Conference Centre.....	18
Nottingham Language Centre	6
Nottingham Trent International College (NTIC).....	13
Occupational Health and Wellbeing.....	4
Prayer Facilities.....	6
Print Shop	1
Safety Office.....	9
Shops.....	8 16
Sir Harry and Lady Djanogly Lecture Theatre.....	22
Student Accommodation Services.....	14
Student residences.....	7
Student Services Centre.....	14
Student Support Services.....	14
Students' Union	16
Taylor building.....	24
Terrace Royal.....	20
Trent Lets.....	1
The Hive	12
University Hall.....	23
Waverley building.....	5

Security.....3
Tel: 0115 848 2468

Clifton Campus



- One-way
- Pedestrian walkway
- Visitor parking
- Disabled parking
- Entrance with wheelchair access
- Main reception
- Student residences
- University buildings
- Bus stops
- No entry
- Go2 Uni bus stop
- Designated smoking area

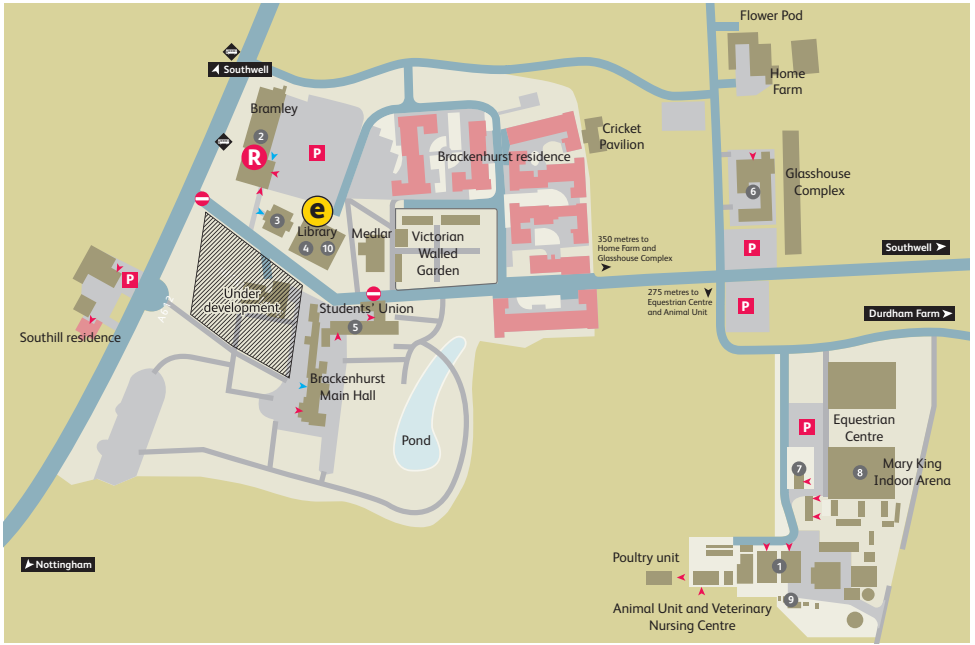
Enrolment

Green Zone – This is a smoke-free and traffic-free area

Ada Byron King building.....	4	Lionel Robbins building.....	10
Anthony Nolan Trust Research Centre.....	11	Maintenance.....	26
Bensonson building.....	8	Mary Ann Evans building.....	6
Bookshop.....	15	Natural Sciences Research Centre (NSRC).....	14
Catalysis and Nanoscience Laboratory.....	16	New Hall Block.....	19
CELS building.....	14	Pavilion building.....	5
Coffee bars.....	5 8	Print Shop.....	7
Crime Scene Training Facility.....	17	Rosalind Franklin building.....	20
DH Lawrence.....	7	Student residences.....	2
Employability team.....	5	Student Services Centre.....	9
Erasmus Darwin building.....	1	Students' Union.....	8
Finance Office.....	9	Supermarket.....	7
Gatehouse.....	24	Teaching and Learning Building.....	12
Global Lounge.....	6	The Clubhouse.....	27
Health Centre.....	9	The Point bar and diner.....	8
Imaging and Display Research Facility.....	18	The Refectory.....	22
Interdisciplinary Science and Technology Centre.....	28	Wellbeing Centre.....	25
John Clare lecture theatres.....	21		
Lecture theatres.....	12 14 19 21		
Lee Westwood Sports Centre.....	13		
Library.....	23		

Security.....19
Tel: 0115 848 6600

Brackenhurst Campus



- Pedestrian walkway
- Parking
- Entrance
- Entrance with wheelchair access
- Main reception
- Student residences
- University buildings
- Bus stops

- Enrolment

Animal Unit and Veterinary Nursing Centre.....	1
Brackenhurst Farm House.....	9
Brackenhurst Schools Unit.....	6
Café.....	5
Employability Centre.....	2
Equine Office and Classroom.....	7
Library.....	4
Mary King Indoor Arena.....	8
Pippin Cottage.....	3
Reception and teaching block.....	2
Students' Union.....	5
Student Support Centre.....	10
Workshops.....	6
Poultry Unit.....	11
Security.....	3

Tel: 0115 848 5262

City centre



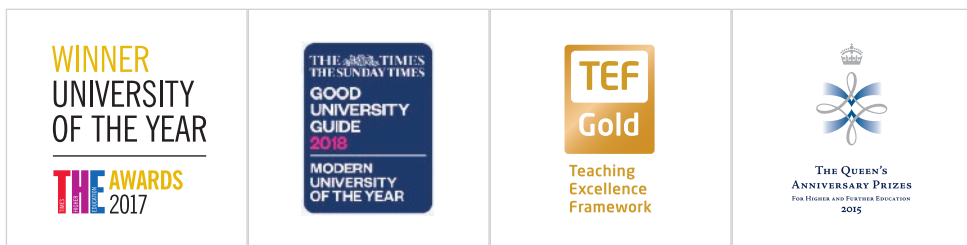
- | | | |
|--|----------------------|------------------------|
| One-way street | University buildings | Tram route and stops |
| Pedestrian street | Bus station | City Information Point |
| Buses, taxis, cyclists and blue badge only | Railway station | |
| General parking | No entry | |

Student Charter

As a student at Nottingham Trent University, your expectations will be as high as your ambitions. We're committed to delivering a high-quality student experience that meets, and looks to exceed, those expectations.

The NTU Student Charter sets out what you can expect from the University, and what the University expects from you.

Visit www.ntu.ac.uk/studentcharter to find out more.



Enquires

+44 (0)115 941 8418

www.ntu.ac.uk

Campus information

Nottingham Trent University
50 Shakespeare Street
Nottingham NG1 4FQ

This information can be made available in alternative formats.

Please note that whilst the University has taken all reasonable steps to ensure the accuracy of the content within this brochure at the time of printing, the University reserves the right to remove, vary or amend the content of the brochure at any time. For avoidance of doubt, the information provided within the content of this brochure is for guidance purposes.

© Nottingham Trent University and may not be reproduced or transmitted in any form in whole or in part without the prior written consent of Nottingham Trent University.