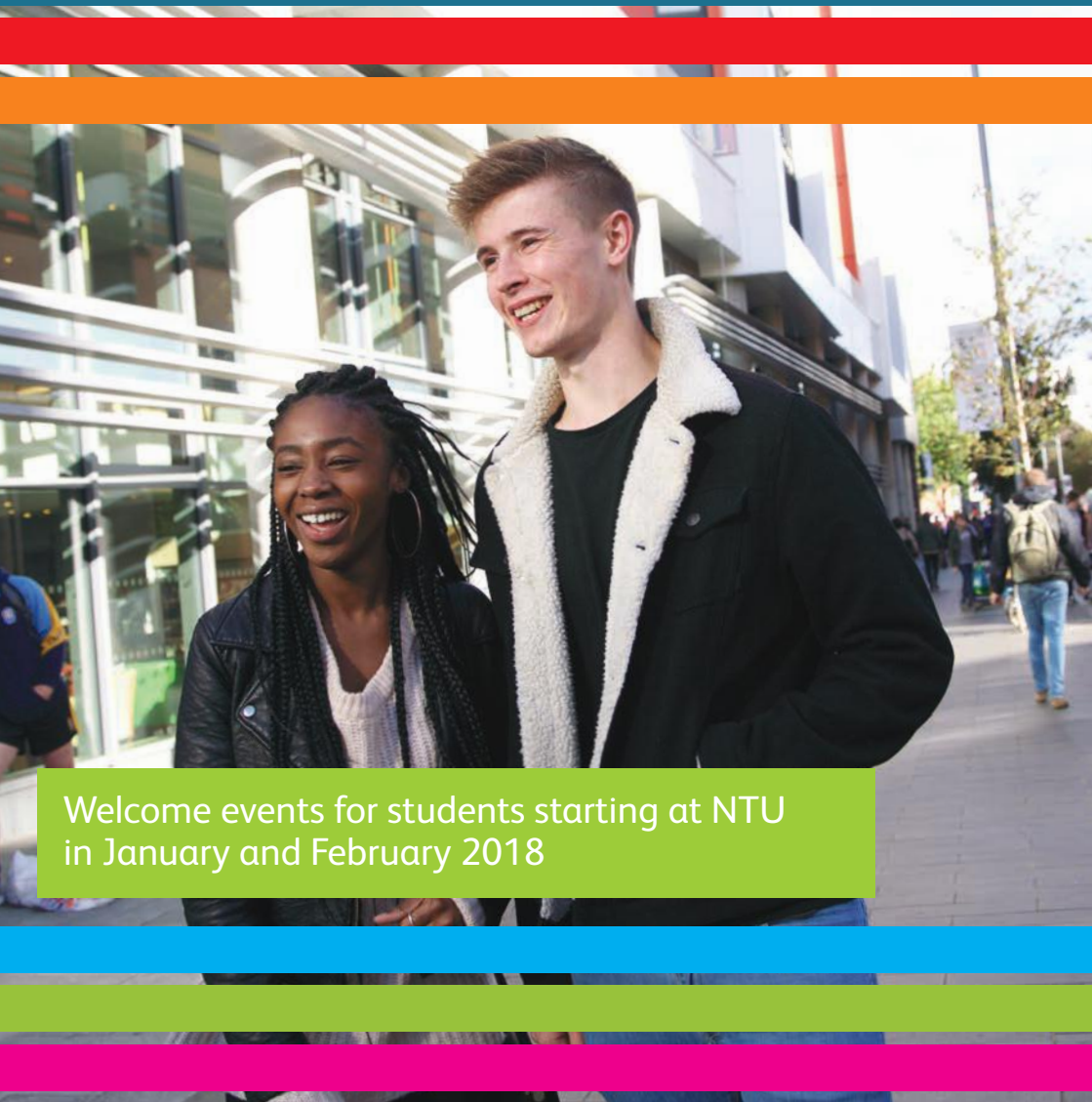


Winter Welcome 2018



Welcome events for students starting at NTU
in January and February 2018



Welcome



We'd like to extend a big, warm welcome to all new students joining us this January and February! Take a look inside this booklet for information about the events we've organised to help welcome you to the University, the Students' Union, and Nottingham. The events are a great opportunity to get to know your new surroundings, meet other new students, and make some lasting friendships.

We look forward to welcoming you!

The Winter Welcome team

Global Lounge

We welcome all students to our Global Lounges at City Campus (Goldsmith Street) and Clifton Campus (Mary Ann Evans building, room 126).

Come and find out about all of the on and off-campus global opportunities and funding available to you. You have the opportunity to organise and participate in cultural events, practise languages at our Language Cafés, meet other students from around the world, and relax with a free tea or coffee and chat with our friendly staff.

Visit www.ntu.ac.uk/globalounge to find out more.



Wellbeing at NTU



The Wellbeing Room is the place to come if you are looking for somewhere relaxed and friendly at Clifton Campus. With comfy chairs and food and drinks on offer, it's a great place to meet up with friends, or become part of the Wellbeing Room family. Students from all campuses are welcome to use the Wellbeing Room.

There are regular events throughout the year, including international student lunches on Tuesdays, or you can just drop in. You will find the Wellbeing Room behind the Clifton Student Services Centre.

Visit www.ntu.ac.uk/faith to find out more.

Sort Your Support



Student Services offer a wide range of professional services to help you throughout your time with us.

This might be with:

- a disability (physical, sensory, or on the autism spectrum)
- a long-term health condition
- dyslexia
- health and wellbeing (isolation, stress, motivation, trouble coping, negative thoughts, behaviours, identity)
- faith (personal support, finding a community)
- money matters (funding, budgeting, income)
- anything else about which you would like support and advice.

The specialist support includes drop-in sessions, one-to-one support sessions, mentoring, and referrals to another professional service.

There is a Student Services Centre at three of our campuses:

- City Campus – Central Court, Newton / Arkwright building
- Clifton Campus – Student Services Centre, next to the Pavilion building
- Brackenhurst Campus – Student Services Centre, Brackenhurst library

To find out how to access these specialist support services, please visit www.ntu.ac.uk/sss or pop along to one of the Student Services Centres in person.

Your Wristband: Free Entry to Events

The following pages are full of events taking place during January and February. These are great opportunities for you to meet other students, to discover more about Nottingham Trent University, and to have a good time.

Please also note that all evening events held in Students' Union bars or nightclubs are open to over 18s only and valid photo ID – such as a passport – will be checked at the door. If you have any queries about your wristband, or about the events at the Students' Union, please email entertainments@su.ntu.ac.uk or visit the Students' Union box office.

Free Winter Welcome wristbands will be given to you when you start your course.

These will allow you free entry to a variety of Students' Union events listed on page 8. For free entry, please wear your wristband and show it at the door of each event.



Your Students' Union



Welcome to Nottingham Trent University and the Students' Union.

Hi, my name is Martha. I am your President here at Nottingham Trent Students' Union (NTSU) and it's my pleasure to welcome you to the Students' Union and all it has to offer.

NTSU was named NUS Higher Education Students' Union of the Year 2015, and is consistently ranked in the top 10 Student Unions (SU) in the country by the National Student Survey (NSS), so you've got a lot to look forward to!

Below, you'll find more information on all the opportunities and services we have here at the SU, and how you can get involved. They've been designed to help enhance your university experience, so we hope you'll make the most of them.

If you have any questions, concerns or comments about how we can support you during your time at NTU, don't hesitate to get in touch with us. In the meantime, we look forward to getting to know you better and wish you all good luck for the year ahead!

Martha Longdon
NTSU President 2017/18

Societies and Sports Clubs

Joining a society or sports club is a great way to meet new people with similar interests. It's also an excellent chance to try something new. NTSU has over 110 societies and 60 sports clubs you can join so there really is something for everyone. You can find an A-Z list of our societies at www.trentstudents.org/societies and see all our sports clubs at www.trentstudents.org/sport.

Entertainment

We know that you'll want to experience as much as possible while you are here in the UK. That's why we offer a diverse entertainments programme that caters to all tastes

and interests. From pub quizzes to day trips around the country, there's plenty to get involved in. Visit www.trentstudents.org/events to keep up to date with what's on offer.

Facilities

NTSU has a venue at our City, Clifton and Brackenhurst campuses, which includes bars, cafés, social space, free Wi-Fi and more!

There's an SU shop at City, Clifton and Brackenhurst that stocks daily essentials like milk, alongside handy supplies like stationery and NTU-branded clothing.

Whichever campus you're on, we want NTSU to be your home away from home, so make sure you pay us a visit!

Volunteering

For any students who are interested in giving back to the local community, NTSU is working alongside the University to launch a new-look volunteering service for students. Micro-volunteering opportunities and student-led schemes are a glimpse of what's to come. Keep an eye out on www.trentstudents.org/volunteering for updates.

You can also get involved in our Raising and Giving (RAG) activities and help to raise vital funds for local charities. Visit www.trentstudents.org/rag for more information.

Your support

NTSU runs a free and confidential Information and Advice Service (IAS) that you can access on City, Clifton and Brackenhurst campuses. Our IAS operates independently of the University and offers impartial advice and support on everything from money matters to mental health. Visit www.trentstudents.org/advice to find out more.

There are also a number of people who are here to represent your views, from your Academic Reps to your Executive Officers. Go to www.trentstudents.org/yourreps to find out more about them.

Find us on Social Media:



/trentstudents



@trentstudents



NTSUInternationalStudents



NTSU_exec



TrentSU





Wednesday 14 February 2018

Welcome To NTU!

Time: 5.15 pm – 6.30 pm

Location: Lecture Theatre 4, Newton building, City Campus

Cost: Free

Be sure to attend this special event for all students starting at NTU this winter!

Vice-Chancellor, Professor Edward Peck, and Martha Longdon, President of the Students' Union, will personally welcome you to the University. It's your chance to find out more about life as a student at Nottingham Trent University, and about the huge variety of opportunities open to you while you're here.

Afterwards, there will be free food and drink and a relaxed opportunity to meet the many other students who are starting at NTU at the same time as you. This is also your chance to find out about the many sports clubs and student-led societies on offer here.

Events

Monday 8 January

Coffee House Sessions

Time: 12 pm – 1.30 pm

Location: The Landing, City Students' Union

Cost: Free entry for wristband holders

The perfect place to chill between lectures – discover up-and-coming artists with a warm cuppa at the Coffee House Sessions!

Games Afternoon

Time: 2 pm – 4 pm

Location: Global Lounge, Mary Ann Evans building, Clifton Campus

Cost: Free

Fancy meeting loads of new people over a nice board game? Looking to spend some fun times playing games and chatting in an informal environment? Come along to the weekly Games Afternoon in the Clifton Global Lounge and get playing! Refreshments and snacks will be provided. All welcome!

Early Evening Hangout – Movie Night

Time: 4 pm – 6 pm

Location: Global Lounge, Mary Ann Evans building, Clifton Campus

Cost: Free

If you love films, come and watch one with other students at Clifton Global Lounge. Snacks and refreshments will be provided.



Tuesday 9 January

Connect Lunch

Time: 12 pm – 2 pm

Location: Wellbeing Room, Student Services building, Clifton Campus

Cost: Free

Calling all new students! Join us for Connect Lunch in the Wellbeing Room – meet students from around the world while enjoying a free lunch. Learn about the Global Lounge, a space for all NTU students, which you can use throughout your studies. Find out about support offered to students by the Chaplaincy.

Language Café

Time: 2 pm – 4 pm

Location: Global Lounge, City Campus

Cost: Free

If you love studying languages but have no one to practise them with, this is an event designed for you. Join us at the Language Café, where you can meet students from different countries and practise various foreign languages. You can also practise English. All students welcome.

Pool Competition

Time: 7 pm – 10 pm

Location: The Point, Clifton Students' Union

Cost: Free entry for wristband holders.

Think you're the best pool player at Nottingham Trent? Head down to The Point every week and prove it – winner's prizes available!



Wednesday 10 January

Clifton Campus and Its Surroundings Tour

Time: 11 am – 1 pm

Location: Global Lounge, Mary Ann Evans building, Clifton Campus

Cost: Free

Join us for a tour of Clifton Campus and the former village of Clifton, now situated within the suburbs of Nottingham city. Find the best spots to study, have lunch, or relax.

Free Lunchtime Concert

Time: 1 pm – 1.30 pm

Location: Old Chemistry Theatre, Newton and Arkwright building, City Campus

Cost: Free

NTU Music presents a recital from current NTU students. Always varied, and always guaranteed to brighten your day!

A Big Clifton Welcome

Time: 4 pm – 6 pm

Location: Basement Bar, The Point, Clifton Students' Union

Cost: Free

Just started at NTU and want to meet some new people? Join us at Clifton Students' Union for a fun, informal welcome. There's a free drink for all new students, plus lots of free Domino's pizzas for you to feast on! Friendly faces – including NTU and Students' Union professional staff and current students – will be on hand to answer your questions.

First Base

Time: 7 pm – 10 pm

Location: The Landing, City Students' Union

Cost: Free entry for wristband holders.

Heading to the club night at Ocean? Of course you are! Head to The Landing for the official pre-bar.

Thursday 11 January

Global Community Lunch

Time: 12 pm – 2 pm

Location: Global Lounge, City Campus

Cost: Free

Calling all new students! Join us for our weekly Global Community Lunch. Learn about the Global Lounge, a space for all NTU students, which you can use throughout your studies.

Clifton Language Café

Time: 2 pm – 4 pm

Location: Room 114, Ada Byron King, Clifton Campus

Cost: Free

If you love studying languages but have no one to practise them with, this is an event designed for you. Join us for the Language Café, where you can meet students from different countries and practise various foreign languages. You can also practise English! All students welcome.



Film Night

Time: 5 pm – 7 pm

Location: Global Lounge, City Campus

Cost: Free

Join us for our weekly film night. Popcorn provided! We will announce on our Facebook page [@NTUGlobalLounge](#) what film we will be showing a few days before.

Quids In

Time: 8 pm – 1 am

Location: The Landing, City Students' Union and The Point, Clifton Students' Union

Cost: Free entry for wristband holders.

Hyped for Tuned every Thursday? Get your hands on cheap tickets to Rock City at Quids In, or enjoy free table tennis all night at Clifton.

Friday 12 January

Assault

Time: 10 pm – 2.30 am

Location: The Loft, City Students' Union

Cost: Free entry for wristband holders.

Enjoy an alternative club night, hosted by the NTU rock society. Look forward to DJs playing the best in rock, punk and metal all night.

Clifton Book Club

Time: 1 pm – 2 pm

Location: Global Lounge, Mary Ann Evans building, Clifton Campus

Cost: Free

Love reading books that aren't part of your curriculum? Wish to explore the world of literature? Join the weekly book club at the Clifton Global Lounge and read the world's biggest classics and the best newcomers to your heart's content. We meet every Friday from 1 – 2 pm in room 126, Mary Ann Evans building.

Saturday 13 January

City Walk: Explore Nottingham

Time: 12 pm – 2 pm

Location: Meet on Newton steps, Goldsmith Street, City Campus

Cost: Free

Join us as we head off the beaten track to discover some of Nottingham's best-kept secrets. Vintage clothes shops, quirky cafés, anything that's a bit out of the ordinary – we'll help you find it! After we've shown you some of the city's hidden treasures, we'll go to a favourite café to recover, so bring money for a drink.

National Videogame Arcade

Time: 2 pm – 6 pm

Location:

- City Campus – Meet on Newton steps, Goldsmith Street at 2 pm
- Clifton Campus – Meet on Pavilion steps at 1.15 pm

Cost: £3

Whether you like your gaming action 8-bit or cutting edge, this venue has it all. Across three floors are video games from Atari to Oculus Rift, on free play for you to immerse yourself in. Or maybe a networked game in the Minecraft Loft is your thing? An essential afternoon of fun for any gamer! You must meet the trip leader at the specified meeting place – so don't go directly to the venue. Students coming from Clifton will travel by bus to the city with our Student Ambassadors, so you will need your bus pass or fare.

Climax

Time: 10.30 pm – 3 am

Location: City Students' Union

Cost: Free entry for wristband holders.

Welcome to Nottingham's number one student club night. With three floors and thousands of students, Climax is sure to be your new home every Saturday.

Events

Sunday 14 January

The Super Mega Quiz of Extreme Awesomeness

Time: 7 pm – 10.30 pm

Location: The Loft, City Students' Union and The Point, Clifton Students' Union

Cost: Free entry for wristband holders.

Join us every Sunday for the Super Mega Quiz! As chosen by you, we change the theme each week. So far we've seen indie rock, Harry Potter and Rick & Morty, to name just a few. Join the group for all the latest updates and to vote for your favourite theme:

www.facebook.com/groups/NTUQuizMasters

Monday 15 January

Clifton Campus Tour

Time: 11 am - 11.30 am

Location: Global Lounge, Mary Ann Evans building, Clifton Campus

Cost: Free

Join us for a tour of Clifton Campus and find out what's on offer. Check out the best spots to study, have lunch and relax.

Coffee House Sessions

Time: 12 pm – 1.30 pm

Location: The Landing, City Students' Union

Cost: Free entry for wristband holders

The perfect place to chill between lectures – discover up-and-coming artists with a warm drink at the Coffee House Sessions.



Games Afternoon

Time: 2 pm – 4 pm

Location: Global Lounge, Mary Ann Evans building, Clifton Campus

Cost: Free

Fancy meeting loads of new people over a nice board game? Looking to spend some fun times playing games and chatting in an informal environment? Come along to the weekly Games Afternoon in the Clifton Global Lounge and get playing. Refreshments and snacks will be provided. All welcome!

Early Evening Hangout – Movie Night

Time: 4 pm – 6 pm

Location: Global Lounge, Mary Ann Evans building, Clifton Campus

Cost: Free

If you love films, come and watch one with other students at Clifton Global Lounge. Snacks and refreshments will be provided.

Tuesday 16 January

Connect Lunch with International Student Support

Time: 12 pm – 2 pm

Location: Wellbeing Room, Student Services building

Cost: Free

Calling all new students! Join us for Connect Lunch in the Wellbeing Room – meet students from around the world while enjoying a free lunch. The International Student Support Services team will be available to answer any questions you have about the services available for international students at NTU, as well as to give you practical advice about settling into your new life in the UK.

Language Café

Time: 2 pm – 4 pm

Location: Global Lounge, City Campus

Cost: Free

If you love studying languages but have no one to practise them with, this is an event designed for you. Join us for the Language Café, where you can meet students from different countries and practise various foreign languages. You can also practise English. All students welcome.

Pool Competition

Time: 7 pm – 10 pm

Location: The Point, Clifton Students' Union

Cost: Free entry for wristband holders.

Think you're the best pool player at Nottingham Trent? Head down to The Point every week and prove it – winner's prizes available!

Open Mic Night

Time: 7 pm – 10.30 pm

Location: The Loft, City Students' Union

Cost: Free entry for wristband holders.

Whether you're looking for the latest and greatest undiscovered talent across campus, or you have a talent of your own to show off for a free drink, Open Mic Night is the place to be. Sign up from 7 pm, and all are welcome to perform.



Wednesday 17 January

School of Science and Technology Induction Day

Time: 11 am – 3.30 pm

Location: 025 and 026, Pavilion building, Clifton Campus

Cost: Free

We invite all new international students in the School of Science and Technology to join us for a day of activities and presentations that will help to introduce you to other students and departments at NTU. The first part of the morning will be a fair between 11 am – 12.30 pm, with lunch provided from 12.30 pm – 1 pm, followed by presentations at 1 pm.

First Base

Time: 7 pm – 10 pm

Location: The Landing, City Students' Union

Cost: Free entry for wristband holders.

Heading to the club night at Ocean? Of course you are! Head to The Landing for The official pre-bar.

Thursday 18 January

Global Community Lunch

Time: 12 pm – 2 pm

Location: Global Lounge, City Campus

Cost: Free

Calling all new students! Join us for our weekly Global Community Lunch. Learn about the Global Lounge, a space for all NTU students, which you can use throughout your studies.

Events



Clifton Language Café

Time: 2 pm – 4 pm

Location: NTSU Basement Bar, The Point, Clifton Students' Union

Cost: Free

If you love studying languages but have no one to practise them with, this is an event designed for you. Join us for the Language Café, where you can meet students from different countries and practise various foreign languages. You can also practise English. All students welcome.

Film Night

Time: 5 pm – 7 pm

Location: Global Lounge, City Campus

Cost: Free

Join us for our weekly film night. Popcorn provided! We will announce on our Facebook page [@NTUGlobalLounge](#) what film we will be showing a few days before.

Quids In

Time: 8 pm – 1 am

Location: The Landing, City Students' Union' and The Point, Clifton Students' Union

Cost: Free entry for wristband holders.

Do Thursday nights the right way at Quids In. £1 drinks, chilled atmosphere and a live DJ all night – cramming in all the best bits of a club night without the entry price

Friday 19 January

Clifton Book Club

Time: 1 pm – 2 pm

Location: Global Lounge, Mary Ann Evans building, Clifton Campus

Cost: Free

Love reading books that aren't part of your curriculum? Wish to explore the world of literature? Join the weekly book club at the Clifton Global Lounge and read the world's biggest classics, and the very best newcomers! We meet every Friday from 1 – 2 pm in room 126, Mary Ann Evans building.

Bingo

Time: 7 pm – 10 pm

Location: The Loft, City Students' Union

Cost: Free entry for wristband holders

From Kelly's Eye to Top of the Shop, it's time for bingo! Get your markers out and get ready for one of NTU's most hilarious nights.

Saturday 20 January

Climax

Time: 10.30 pm – 3 am

Location: City Students' Union

Cost: Free entry for wristband holders.

Welcome to Nottingham's number one student club night. With three floors and thousands of students, Climax is sure to be your new home every Saturday.

Events

Sunday 21 January

The Super Mega Quiz of Extreme Awesomeness

Time: 7 pm – 10.30 pm

Location: The Loft, City Students' Union and The Point, Clifton Students' Union

Cost: Free entry for wristband holders.

Join us every Sunday for the Super Mega Quiz. As chosen by you, we change the theme each week. So far we've seen indie rock, Harry Potter and Rick & Morty, to name just a few. Join the group for all the latest updates and to vote for your favourite theme:

www.facebook.com/groups/NTUQuizMasters

Monday 22 January

Clifton Campus Tour

Time: 11 am – 11.30 am

Location: Global Lounge, Mary Ann Evans building, Clifton Campus

Cost: Free

Join us for a tour of NTU Clifton Campus and find out what's on offer. Check out the best spots to study, have lunch and relax.

Coffee House Sessions

Time: 12 pm – 1.30 pm

Location: The Landing, City Students' Union

Cost: Free entry for wristband holders.

The perfect place to chill between lectures – discover up-and-coming artists with a warm drink at the Coffee House Sessions!



Games Afternoon

Time: 2 pm – 4 pm

Location: Global Lounge, Mary Ann Evans building, Clifton Campus

Cost: Free

Fancy meeting loads of new people over a nice boardgame? Looking to spend some fun times playing games and chatting in an informal environment? Come along to the weekly Games Afternoon in the Clifton Global Lounge and get playing. Refreshments and snacks will be provided. All welcome!

Early Evening Hangout – Movie Night

Time: 4 pm – 6 pm

Location: Global Lounge, Mary Ann Evans building, Clifton Campus

Cost: Free

If you love films, come and watch one with other students at Clifton Global Lounge. Snacks and refreshments will be provided.

Tuesday 23 January

Connect Lunch

Time: 12 pm – 2 pm

Location: Wellbeing Room, Student Services building, Clifton Campus

Cost: Free

Calling all new students! Join us for Connect Lunch in the Wellbeing Room – meet students from around the world while enjoying a free lunch. Learn about the Global Lounge, a space for all NTU students, which you can use throughout your studies. Find out about support offered to students by the Chaplaincy.

Language Café

Time: 2 pm – 4 pm

Location: Global Lounge, City Campus

Cost: Free

If you love studying languages but have no one to practise them with, this is an event designed for you. Join us for the Language Café, where you can meet students from different countries and practise various foreign languages. You can also practise English! All students welcome.

Level Up – Video Game Party

Time: 3 pm – 7 pm

Location: The Loft, City Students' Union

Cost: Free entry for wristband holders.

Controllers at the ready... introducing Level Up 1.0. The brand new ultimate video game party for all skill levels – featuring the latest and greatest games chosen by you. From multiplayer classics to unique experiences, these are the gaming good times that you do not want to miss.

Pool Competition

Time: 7 pm – 10 pm

Location: The Point, Clifton Students' Union

Cost: Free entry for wristband holders.

Think you're the best pool player at Nottingham Trent? Head down to The Point every week and prove it – winner's prizes available!

Wednesday 24 January

Free Lunchtime Concert

Time: 1 pm – 1.30 pm

Location: Old Chemistry Theatre, Newton and Arkwright building, City Campus

Cost: Free

NTU Music presents a recital from current students. Always varied, always guaranteed to brighten your day!



Nottingham City Centre Tour

Time: 2 pm – 3.30 pm

Location: Global Lounge, City Campus

Cost: Free

Learn more about your new home away from home! Join us on a tour of the Nottingham city centre landmarks and find out our best tips on where to shop.

Meet Friends from Around the World

Time: 4 pm – 5 pm

Location: Global Lounge, City Campus

Cost: Free

A great opportunity to make new friends and mingle with people from other cultures. There will be games, refreshments and music, along with lots of opportunities to ask current students any questions about studying in Nottingham. This event is open to all NTU students and as always, is completely free.

First Base

Time: 7 pm – 10 pm

Location: The Landing, City Students' Union

Cost: Free entry for wristband holders.

Heading to the club night at Ocean? Of course you are! Head to the Landing for the official pre-bar.

Thursday 25 January

Global Community Lunch

Time: 12 pm – 2 pm

Location: Global Lounge, City Campus

Cost: Free

Calling all new students! Join us for our weekly Global Community Lunch – this week we will be celebrating Polish Culture. Try some Polish food, speak to native Polish students and find out more about Polish traditions. Learn about the Global Lounge, a space for all NTU students, which you can use throughout your studies.

Clifton Language Café

Time: 2 pm – 4 pm

Location: NTSU Basement Bar, The Point, Clifton Students' Union

Cost: Free

If you love studying languages but have no one to practise them with, this is an event designed for you. Join us for the Language Café, where you can meet students from different countries and practise various foreign languages. You can also practise English. All students welcome.

Film Night

Time: 5 pm – 7 pm

Location: Global Lounge, City Campus

Cost: Free

Join us for our weekly film night. Popcorn provided! We will announce on our Facebook page [@NTUGlobalLounge](#) what film we will be showing a few days before.

Quids In

Time: 8 pm – 1 am

Location: The Landing, City Students' Union and The Point, Clifton Students' Union

Cost: Free entry for wristband holders.

Do Thursday nights the right way at Quids In. £1 drinks, chilled atmosphere and a live DJ all night – cramming in all the best bits of a club night without the entry price.

Friday 26 January

Clifton Book Club

Time: 1 pm – 2 pm

Location: Global Lounge, Mary Ann Evans building, Clifton Campus

Cost: Free

Love reading books that aren't part of your curriculum? Wish to explore the world of literature? Join the weekly book club at the Clifton Global Lounge and read the world's biggest classics, and the very best newcomers. We meet every Friday from 1 – 2 pm in room 126, Mary Ann Evans building.

Assault

Time: 10 pm – 2.30 am

Location: The Loft, City Students' Union

Cost: Free entry for wristband holders.

Enjoy an alternative club night, hosted with the NTU rock society! Look forward to DJs playing the best in rock, punk and metal all night.

Saturday 27 January

Climax

Time: 10.30 pm – 3 am

Location: City Students' Union

Cost: Free entry for wristband holders.

Welcome to Nottingham's number one student club night. With three floors and thousands of students, Climax is sure to be your new home every Saturday.

Sunday 28 January

The Super Mega Quiz of Extreme Awesomeness

Time: 7 pm – 10.30 pm

Location: The Loft, City Students' Union and The Point, Clifton Students' Union

Cost: Free entry for wristband holders.

Join us every Sunday for the Super Mega Quiz! As chosen by you, we change theme each week. So far we've seen indie rock, Harry Potter and Rick & Morty, to name just a few. Join the group for all the latest updates and to vote for your favourite theme:

www.facebook.com/groups/NTUQuizMasters



Monday 29 January

Clifton Campus Tour

Time: 11 am – 11.30 am

Location: Global Lounge, Mary Ann Evans building, Clifton Campus

Cost: Free

Join us for a tour of Clifton Campus and find out what's on offer. Check out the best spots to study, have lunch and relax.

Coffee House Sessions

Time: 12 pm – 1.30 pm

Location: The Landing, City Students' Union

Cost: Free entry for wristband holders.

The perfect place to chill between lectures – discover up-and-coming artists with a warm drink at the Coffee House Sessions!

Games Afternoon

Time: 2 pm – 4 pm

Location: Global Lounge, Mary Ann Evans building, Clifton Campus

Cost: Free

Fancy meeting loads of new people over a nice boardgame? Looking to spend some fun times playing games and chatting in an informal environment? Come along to the weekly Games Afternoon in the Clifton Global Lounge and get playing. Refreshments and snacks will be provided. All welcome!

Early Evening Hangout – Movie Night

Time: 4 pm – 6 pm

Location: Global Lounge, Mary Ann Evans building, Clifton Campus

Cost: Free

If you love films, come and watch one with other students at Clifton Global Lounge. Snacks and refreshments will be provided.

The Comedy Box

Time: 7 pm – 10.30 pm

Location: The Loft, City Students' Union and The Point, Clifton Students' Union

Cost: Free entry for wristband holders.

We were going to write something funny here, but we'll leave that to the comedians! We'll be showcasing some of the UK's best up-and-coming comedians.

Tuesday 30 January

Connect Lunch

Time: 12 pm – 2 pm

Location: Wellbeing Room, Student Services building, Clifton Campus

Cost: Free

Calling all new students! Join us for Connect Lunch in the Wellbeing Room, meet students from around the world while enjoying a free lunch. Learn about the Global Lounge, a space for all NTU students, which you can use throughout your studies. Find out about support offered to students by the Chaplaincy.



Language Café

Time: 2 pm – 4 pm

Location: Global Lounge, City Campus

Cost: Free

If you love studying languages but have no one to practise them with, this is an event designed for you. Join us for the Language Café, where you can meet students from different countries and practise various foreign languages. You can also practise English! All students welcome.

Pool Competition

Time: 7 pm – 10 pm

Location: The Point, Clifton Students' Union

Cost: Free entry for wristband holders.

Think you're the best pool player at Nottingham Trent? Head down to The Point every week and prove it – winner's prizes available!

Wednesday 31 January

Nottingham City Centre Tour

Time: 2 pm – 3.30 pm

Location: Global Lounge, City Campus

Cost: Free

Learn more about your new home away from home! Join us on a tour of the Nottingham city centre landmarks and find out our best tips on where to shop.

Meet Friends From Around the World

Time: 4 pm – 5 pm

Location: Global Lounge, City Campus

Cost: Free

A great opportunity to make new friends and mingle with people from other cultures. There will be games, refreshments and music along with lots of opportunity to ask current students any questions about studying in Nottingham. This event is open to all NTU students and as always, is completely free.

Adventure Golf

Time: 5.30 pm – 7 pm

Location: Meet on Newton Steps, Goldsmith Street, City Campus

Cost: £3

Test your skills against venomous talking snakes and crumbling walls at Lost City Adventure Golf, a fun way to meet new people. You must meet the trip leader at the specified meeting place – so don't go straight to the venue.

First Base

Time: 7 pm – 10 pm

Location: The Landing, City Students' Union

Cost: Free entry for wristband holders.

Heading to the club night at Ocean? Of course you are! Head to the Landing for the official pre-bar.



Thursday 1 February

Global Community Lunch with International Student Support

Time: 12 pm – 2 pm

Location: Global Lounge, City Campus

Cost: Free

Calling all new students! Join us for our weekly Global Community Lunch. Learn about the Global Lounge, a space for all NTU students, which you can use throughout your studies. The International Student Support Services team will be available to answer any questions you have about the services available for international students, as well as to give you practical advice about settling into your new life in the UK.

Clifton Language Café

Time: 2 pm – 4 pm

Location: NTSU Basement Bar, The Point, Clifton Students' Union

Cost: Free

If you love studying languages but have no one to practise them with, this is an event designed for you. Join us for the Language Café, where you can meet students from different countries and practise various foreign languages. You can also practise English. All students welcome.

Film Night

Time: 5 pm – 7 pm

Location: Global Lounge, City Campus

Cost: Free

Join us for our weekly film night. Popcorn provided. We will announce on our Facebook page @NTUGlobalLounge what film we will be showing a few days before.

Quids In

Time: 8 pm – 1 am

Location: The Landing, City Students' Union and The Point, Clifton Students' Union

Cost: Free entry for wristband holders.

Do Thursday nights the right way at Quids In. £1 drinks, chilled atmosphere and a live DJ all night - cramming in all the best bits of a club night without the entry price

Friday 2 February

Clifton Book Club

Time: 1 pm – 2 pm

Location: Global Lounge, Mary Ann Evans building, Clifton Campus

Cost: Free

Love reading books that aren't part of your curriculum? Wish to explore the world of literature? Join the weekly book club at the Clifton Global Lounge and read the world's biggest classics, and the very best newcomers! We meet every Friday from 1 – 2 pm in room 126, Mary Ann Evans building.

Neon

Time: 11 pm – 3 am

Location: The Loft, City Students' Union

Cost: Free entry for wristband holders.

Join NTU's Pride society for Neon – our LGBTQ+ club night! Meet likeminded people and enjoy a live DJ playing the best in '80s, '90s and noughties cheese!



Saturday 3 February

Climax

Time: 10.30 pm – 3 am

Location: City Students' Union

Cost: Free entry for wristband holders.

Welcome to Nottingham's number one student club night. With three floors and thousands of students, Climax is sure to be your new home every Saturday.

Sunday 4 February

Ice Skating

Time: 2.15 pm – 4.30 pm

Location: Meet on Newton steps, Goldsmith Street, City Campus

Cost: £3

Show off your ice skating skills (or lack thereof!) in a public skating session at the National Ice Centre. Meet new friends and fall over together! Bring thick socks – skate hire is included.

The Super Mega Quiz of Extreme Awesomeness

Time: 7 pm – 10.30 pm

Location: The Loft, City Students' Union and The Point, Clifton Students' Union

Cost: Free entry for wristband holders.

Join us every Sunday for the Super Mega Quiz. As chosen by you, we change the theme each week. So far we've seen indie rock, Harry Potter and Rick & Morty, to name just a few. Join the group for all the latest updates and to vote for your favourite theme:

www.facebook.com/groups/NTUQuizMasters

Monday 5 February

Clifton Campus Tour

Time: 11 am – 11.30 am

Location: Global Lounge, Mary Ann Evans building, Clifton Campus

Cost: Free

Join us for a tour of Clifton Campus and find out what's on offer. Check out the best spots to study, have lunch and relax.

Coffee House Sessions

Time: 12 pm – 1.30 pm

Location: The Landing, City Students' Union

Cost: Free entry for wristband holders.

The perfect place to chill between lectures – discover up-and-coming artists with a warm cuppa at the Coffee House Sessions!



Games Afternoon

Time: 2 pm – 4 pm

Location: Global Lounge, Mary Ann Evans building, Clifton Campus

Cost: Free

Fancy meeting loads of new people over a nice boardgame? Looking to spend some fun times playing games and chatting in an informal environment? Come along to the weekly Games Afternoon in the Clifton Global Lounge and get playing! Refreshments and snacks will be provided. All welcome.

Early Evening Hangout – Movie Night

Time: 4 pm – 6 pm

Location: Global Lounge, Mary Ann Evans building, Clifton Campus

Cost: Free

If you love films, come and watch one with other students at Clifton Global Lounge. Snacks and refreshments will be provided.

Tuesday 6 February

Connect Lunch

Time: 12 pm – 2 pm

Location: Wellbeing Room, Student Services building, Clifton Campus

Cost: Free

Calling all new students! Join us for Connect Lunch in the Wellbeing Room – meet students from around the world, while enjoying a free lunch. Learn about the Global Lounge, a space for all NTU students, which you can use throughout your studies. Find out about support offered to students by the Chaplaincy.

Language Café

Time: 2 pm – 4 pm

Location: Global Lounge, City Campus

Cost: Free

If you love studying languages but have no one to practise them with, this is an event designed for you. Join us for the Language Café, where you can meet students from different countries and practise various foreign languages. You can also practise English. All students welcome.

Welcome for Exchange and Study Abroad students

Time: 5 pm – 7 pm

Location: 026, Pavilion building, Clifton Campus

Cost: Free

Are you a new exchange or international student at NTU? If so, please join us for a welcome session and meet other students from around the world, and find out more information about NTU and Nottingham.

Pool Competition

Time: 7 pm – 10 pm

Location: The Point, Clifton Students' Union

Cost: Free entry for wristband holders

Think you're the best pool player at Nottingham Trent? Head down to The Point every week and prove it – winner's prizes available!

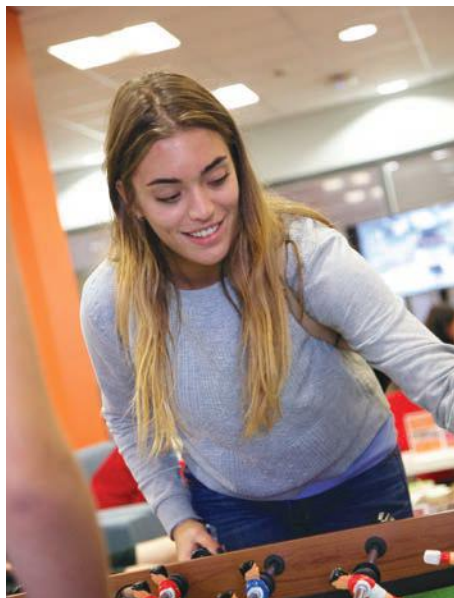
Open Mic Night

Time: 7 pm – 10.30 pm

Location: The Loft, City Students' Union

Cost: Free entry for wristband holders

Whether you're looking for the latest and greatest undiscovered talent across campus, or you have a talent of your own to show off for a free drink, Open Mic Night is the place to be. Sign up from 7 pm, and all are welcome to perform.



Wednesday 7 February

Free Lunchtime Concert

Time: 1 pm – 1.30 pm

Location: Old Chemistry Theatre, Newton and Arkwright building, City Campus

Cost: Free

NTU Music presents a recital from current students. Always varied, always guaranteed to brighten your day!

Nottingham City Centre Tour

Time: 2 pm – 3.30 pm

Location: Global Lounge, City Campus

Cost: Free

Learn more about your new home away from home! Join us on a tour of the Nottingham city centre landmarks and find out our best tips on where to shop.

What is Culture Shock?

Time: 4 pm – 5 pm

Location: Global Lounge, City Campus

Cost: Free

While usually temporary, culture shock is common among international students arriving in the UK, or for UK students moving away from the comfort of their home. You will notice differences between the way things are done and what you are used to at home. These include the way people dress, speak and behave, teaching and learning styles, food... and potentially all aspects of life. Join us at Global Lounge for this fun and interactive session which will help you identify symptoms of experiencing culture shock and how to deal with it. All students welcome.

First Base

Time: 7 pm – 10 pm

Location: The Landing, City Students' Union

Cost: Free entry for wristband holders.

Heading to the club night at Ocean? Of course you are! Head to The Landing for the official pre-bar.

Thursday 8 February

Global Community Lunch

Time: 12 pm – 2 pm

Location: Global Lounge, City Campus

Cost: Free

Calling all new students! Join us for our weekly Global Community Lunch. Learn about the Global Lounge, a space for all NTU students, which you can use throughout your studies.

Clifton Language Café

Time: 2 pm – 4 pm

Location: NTSU Basement Bar, The Point, Clifton Students' Union

Cost: Free

If you love studying languages but have no one to practise them with, this is an event designed for you. Join us for the Language Café, where you can meet students from different countries and practise various foreign languages. You can also practise English. All students welcome.

Welcome for Exchange and Study Abroad students

Time: 5 pm – 7 pm

Location: Global Lounge, City Campus

Cost: Free

Are you a new exchange or international student at NTU? If so, please join us for a welcome session and meet other students from around the world. Find out more about NTU and Nottingham during this fun and informative event.

Quids In

Time: 8 pm – 1 am

Location: The Landing, City Students' Union and The Point, Clifton Students' Union

Cost: Free entry for wristband holders.

Do Thursday nights the right way at Quids In. £1 drinks, chilled atmosphere and a live DJ all night – cramming in all the best bits of a club night without the entry price.

Friday 9 February

Clifton Book Club

Time: 1 pm – 2 pm

Location: Global Lounge, Mary Ann Evans building, Clifton Campus

Cost: Free

Love reading books that aren't part of your curriculum? Wish to explore the world of literature? Join the weekly book club at the Clifton Global Lounge and read the world's biggest classics, and the very best newcomers! We meet every Friday from 1 – 2 pm in room 126, Mary-Ann Evans building.



Assault

Time: 10 pm – 2.30 am

Location: The Loft, City Students' Union

Cost: Free entry for wristband holders.

Enjoy an alternative club night, hosted with the NTU rock society! Look forward to DJs playing the best in rock, punk and metal all night.

Saturday 10 February

Nottingham Panthers Ice Hockey

Time: 6.15 pm – 10 pm

Location: Meet on the Newton steps, Goldsmith Street, City Campus

Cost: £7

Experience a gripping match between the Nottingham Panthers and arch-rivals Sheffield Steelers. Email welcome.week@ntu.ac.uk to book your ticket and pay on the evening.

Ghost Walk

Time: 6.15 pm – 10 pm

Location: Meet on the Newton steps, Goldsmith Street, City Campus

Cost: £4

The original Nottingham Ghost Walk shows you the darker side of the city's nightlife. Find out about the different types of ghosts and where they do their haunting.

Climax

Time: 10.30 pm – 3 am

Location: City Students' Union

Cost: Free entry for wristband holders.

Welcome to Nottingham's number one student club night. With three floors and thousands of students, Climax is sure to be your new home every Saturday.



Sunday 11 February

The Super Mega Quiz of Extreme Awesomeness

Time: 7 pm – 10.30 pm

Location: The Loft, City Students' Union and The Point, Clifton Students' Union

Cost: Free entry for wristband holders.

Join us every Sunday for the Super Mega Quiz! As chosen by you, we change the theme each week. So far we've seen indie rock, Harry Potter and Rick & Morty, to name just a few. Join the group for all the latest updates and to vote for your favourite theme:

www.facebook.com/groups/NTUQuizMasters

Monday 12 February

Clifton Campus Tour

Time: 11 am – 11.30 am

Location: Global Lounge, Mary Ann Evans building, Clifton Campus

Cost: Free

Join us for a tour of Clifton Campus and find out what's on offer. Check out the best spots to study, have lunch and relax.

Coffee House Sessions

Time: 12 pm – 1.30 pm

Location: The Landing, City Students' Union

Cost: Free entry for wristband holders.

The perfect place to chill between lectures – discover up-and-coming artists with a warm drink at the Coffee House Sessions!

Games Afternoon

Time: 2 pm – 4 pm

Location: Global Lounge, Mary Ann Evans building, Clifton Campus

Cost: Free

Fancy meeting loads of new people over a nice boardgame? Looking to spend some fun times playing games and chatting in an informal environment? Come along to the weekly Games Afternoon in the Clifton Global Lounge and get playing! Refreshments and snacks will be provided. All welcome.

Early Evening Hangout – Movie Night

Time: 4 pm – 6 pm

Location: Global Lounge, Mary Ann Evans building, Clifton Campus

Cost: Free

If you love films, come and watch one with other students at Clifton Global Lounge. Snacks and refreshments will be provided.

Tuesday 13 February

Connect Lunch

Time: 12 pm – 2 pm

Location: Wellbeing Room, Student Services building, Clifton Campus

Cost: Free

Calling all new students! Join us for Connect Lunch in the Wellbeing Room - meet students from around the world, while enjoying a free lunch. Learn about the Global Lounge, a space for all NTU students, which you can use throughout your studies. Find out about support offered to students by the Chaplaincy.

Language Café

Time: 2 pm – 4 pm

Location: Global Lounge, City Campus

Cost: Free

If you love studying languages but have no one to practise them with, this is an event designed for you. Join us for the Language Café, where you can meet students from different countries and practise various foreign languages. You can also practise English. All students welcome.

Pool Competition

Time: 7 pm – 10 pm

Location: The Point, Clifton Students' Union

Cost: Free entry for wristband holders.

Think you're the best pool player at Nottingham Trent? Head down to The Point every week and prove it – winner's prizes available!

Wednesday 14 February

Welcome to NTU

Time: 5.15 pm – 6.30 pm

Location: Lecture Theatre 4, Newton building, City Campus

Cost: Free

Vice-Chancellor, Professor Edward Peck, and Martha Longdon, President of the Students' Union, will personally welcome you to the University. It's your chance to enjoy free food and drink as you find out more about life as a student at NTU, and about the huge variety of opportunities open to you while you're here.

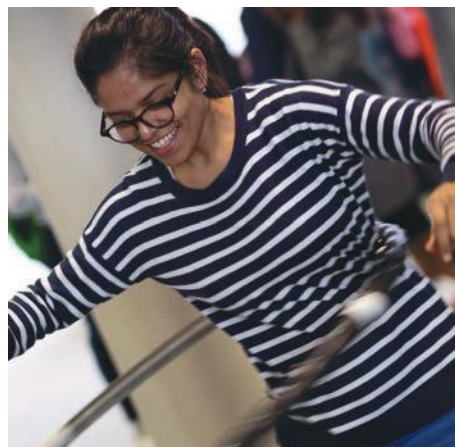
First Base

Time: 7 pm – 10 pm

Location: The Landing, City Students' Union

Cost: Free entry for wristband holders.

Heading to the club night at Ocean? Of course you are! Head to the Landing for the official pre - bar.



Thursday 15 February

Global Community Lunch

Time: 12 pm – 2 pm

Location: Global Lounge, City Campus

Cost: Free

Calling all new students! Join us for our weekly Global Community Lunch. Learn about the Global Lounge, a space for all NTU students, which you can use throughout your studies.

Clifton Language Café

Time: 2 pm – 4 pm

Location: NTSU Basement Bar, The Point, Clifton Students' Union

Cost: Free

If you love studying languages but have no one to practise them with, this is an event designed for you. Join us for the Language Café, where you can meet students from different countries and practise various foreign languages. You can also practise English. All students welcome.

Film Night

Time: 5 pm – 7 pm

Location: Global Lounge, City Campus

Cost: Free

Join us for our weekly film night. Popcorn provided! We will announce on our Facebook page @NTUGlobalLounge what film we will be showing a few days before.



Quids In

Time: 8 pm – 1 am

Location: The Landing, City Students' Union and The Point, Clifton Students' Union

Cost: Free entry for wristband holders.

Do Thursday nights the right way at Quids In. £1 drinks, chilled atmosphere and a live DJ all night – cramming in all the best bits of a club night without the entry price.

Friday 16 February

Clifton Book Club

Time: 1 pm – 2 pm

Location: Global Lounge, Mary Ann Evans building, Clifton Campus

Cost: Free

Love reading books that aren't part of your curriculum? Wish to explore the world of literature? Join the weekly book club at the Clifton Global Lounge and read the world's biggest classics, and the very best newcomers! We meet every Friday from 1 – 2 pm in room 126, Mary-Ann Evans building.

Bingo

Time: 7 pm – 10 pm

Location: The Loft, City Students' Union

Cost: Free entry for wristband holders.

From Kelly's Eye to Top of the Shop, it's time for bingo! Get your markers out and get ready for one of NTU's most hilarious nights.

Saturday 17 February

Climax

Time: 10.30 pm – 3 am

Location: City Students' Union

Cost: Free entry for wristband holders.

Welcome to Nottingham's number one student club night. With three floors and thousands of students, Climax is sure to be your new home every Saturday.

Sunday 18 February

The Super Mega Quiz of Extreme Awesomeness

Time: 7 pm – 10.30 pm

Location: The Loft, City Students' Union and The Point, Clifton Students' Union

Cost: Free entry for wristband holders.

Join us every Sunday for the Super Mega Quiz! As chosen by you, we change the theme each week. So far we've seen Indie Rock, Harry Potter and Rick & Morty, to name just a few. Join the group for all the latest updates and to vote for your favourite theme:

www.facebook.com/groups/NTUQuizMasters

Monday 19 February

Games Afternoon

Time: 2 pm – 4 pm

Location: Global Lounge, Mary Ann Evans building, Clifton Campus

Cost: Free

Fancy meeting loads of new people over a nice boardgame? Looking to spend some fun times playing games and chatting in an informal environment? Come along to the weekly Games Afternoon in the Clifton Global Lounge and get playing. Refreshments and snacks will be provided. All welcome!



Early Evening Hangout – Movie Night

Time: 4 pm – 6 pm

Location: Global lounge, Mary Ann Evans building, Clifton Campus

Cost: Free

If you love films, come and watch one with other students at Clifton Global Lounge. Snacks and refreshments will be provided.

Tuesday 20 February

Connect Lunch

Time: 12 pm – 2 pm

Location: Wellbeing Room, Student Services building, Clifton Campus

Cost: Free

Calling all new students! Join us for Connect Lunch in the Wellbeing Room – meet students from around the world, while enjoying a free lunch. Learn about the Global Lounge, a space for all NTU students, which you can use throughout your studies. Find out about support offered to students by the Chaplaincy.

Language Café

Time: 2 pm – 4 pm

Location: Global Lounge, City Campus

Cost: Free

If you love studying languages but have no one to practise them with, this is an event designed for you. Join us for the Language Café, where you can meet students from different countries and practise various foreign languages. You can also practise English. All students welcome.

Wednesday 21 February

Free Lunchtime Concert

Time: 1 pm – 1.30 pm

Location: Old Chemistry Theatre, Newton and Arkwright building, City Campus

Cost: Free

NTU Music presents a recital from current students. Always varied, always guaranteed to brighten your day!

Thursday 22 February

Global Community Lunch

Time: 12 pm – 2 pm

Location: Global Lounge, City Campus

Cost: Free

Calling all new students! Join us for our weekly Global Community Lunch. Learn about the Global Lounge, a space for all NTU students, which you can use throughout your studies.

Clifton Language Café

Time: 2 pm – 4 pm

Location: NTSU Basement Bar, The Point, Clifton Students' Union

Cost: Free

If you love studying languages but have no one to practise them with, this is an event designed for you. Join us for the Language Café, where you can meet students from different countries and practise various foreign languages. You can also practise English. All students welcome.

Film Night

Time: 5 pm – 7 pm

Location: Global Lounge, City Campus

Cost: Free

Join us for our weekly film night. Popcorn provided. We will announce on our Facebook page **@NTUGlobalLounge** what film we will be showing a few days before.

Friday 23 February

Clifton Book Club

Time: 1 pm – 2 pm

Location: Global Lounge, Mary Ann Evans building, Clifton Campus

Cost: Free

Love reading books that aren't part of your curriculum? Wish to explore the world of literature? Join the weekly book club at the Clifton Global Lounge and read the world's biggest classics, and the very best newcomers! We meet every Friday from 1 – 2 pm in room 126, Mary Ann Evans building.



Language in Tandem



Going abroad as part of your course? Would you like to speak like a local? Or if you've just arrived in the UK and would like to learn the English language, then this scheme is for you.

Language in Tandem is a simple idea – two students, usually one UK and one international, meet weekly for about an hour. We'll organise the perfect language buddy for you based on your language interests so that you can enjoy comparing cultures, while learning new words, expressions and customs.

Go to www.ntu.ac.uk/global-language and fill in the online form to take part.





NTU Sport

Try for free with your Winter Welcome wristband

A great offer from NTU Sport – use your wristband to give you three free sessions in our fantastic sports facilities! Try the gym, fitness classes or book a court for free any time before the end of February. Just turn up with your wristband and discover what NTU Sport has to offer.

NTU Active membership

Get active while studying. NTU Sport has a whole host of activities and services available for you to make the most of alongside your studies. To gain access to our gyms, sports facilities and fitness classes, you'll need to become an NTU Active member. We offer a variety of joining options to NTU students, with prices starting at just £9.99 a month.

Membership includes:

- unlimited use of all NTU gyms and sport facilities
- unlimited free access to fitness classes and blast sessions with priority booking
- discounted access to the University of Nottingham's swimming pool
- free hire of our facilities to play squash, tennis, football and more
- unlimited free access to all Play for Fun sessions.

Fitness classes

At NTU we offer a wide variety of fitness classes. These group-based sessions are led by qualified instructors and are a fun way to keep fit, unwind and meet new people in a friendly environment. We have over 60 to choose from each week, ranging from gentle introductory sessions to intense workouts. We also run blast sessions, which are 20 to 30 minutes in duration.

To book onto a fitness class or blast session, visit us at reception or contact us by phone;

0115 848 3219 (Clifton Campus) or

0115 848 4066 (City Campus).

Visit www.ntu.ac.uk/fitnessclasses to view the full timetable of classes at both the City and Clifton campuses.

Special offer

From 1 January you can purchase an Active Membership for just £75!*

*Membership is valid until 31 August 2018.



Interested in joining?

Visit www.ntu.ac.uk/sportmembership for more information.

Play for Fun

NTU Sport boasts the motto Proud To Be NTU. We pride ourselves in offering something for everyone, whether you're a beginner, want to get back into a sport you love without the commitment or just want an alternative to the gym, there's an activity for you. Play for Fun is your portal to discovering new sports opportunities, making new friends and developing new passions. But most importantly – having fun while playing!

We have a number of sessions running throughout the year, giving you plenty to choose from each week. All equipment is provided, so you really can just turn up and play.

Visit www.ntu.ac.uk/playforfun for more information.

Sports volunteering

Volunteering during your time at NTU is a great way of helping the local community at the same time as helping yourself. In the current job market, standing out from the crowd is essential, and volunteering could do this for you. NTU Sport works in partnership with Nottingham Trent Volunteering to offer a huge range of sports volunteering opportunities.

Visit www.ntu.ac.uk/sportsvolunteering for more information about the opportunities available and how to get involved.



Sports Clubs



Joining a sports club during your time at NTU could be one of the best things you ever do.

With 60 different clubs to choose from, open to all levels and abilities, the time to get involved is now. Whether you want to try something new or continue with an activity you've been doing for years, there's sure to be a club for you.

Our clubs are open to new members, and some – especially the recreational and outdoor sports – will be running dedicated taster sessions at the start of term. You can find the contact details for all of our clubs in the sports club directory on our website. Alternatively, if you have any questions, email us at sport@ntu.ac.uk or call **0115 848 3219**.

Visit www.ntu.ac.uk/sportsclubs to find out more about each club in our sports club directory.

Sports Club membership

All those wishing to join a sports club must pay the Sports Club membership fee of £35, which is valid from January for the remainder of the academic year. Additional club subscription fees may also apply. See www.ntu.ac.uk/sportmembership for more details.





26 February – 2 March 2018

Global Week is a fantastic celebration of the rich cultural diversity at NTU. The event has grown every year and it is our goal to make it even bigger and better in 2018, which is where you come in.

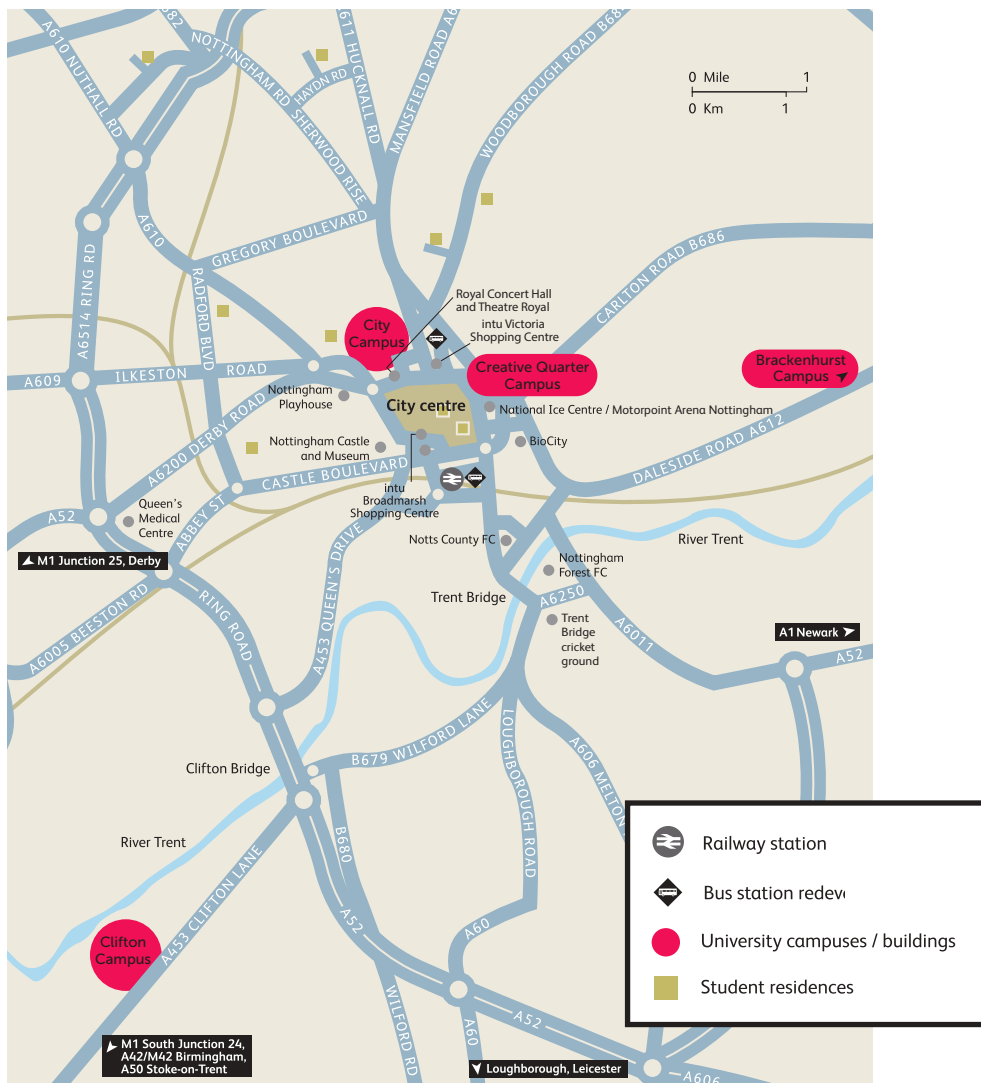
We are looking for anything globally themed, from culture, music, language, sport and food, to international issues such as environment, migration, politics, healthcare... you name it!

If you don't know where to start, don't worry. Visit www.ntu.ac.uk/globalweek or contact us at NTUGlobalLounge@ntu.ac.uk for more information.

Essential Information: Transport Between Campuses

Nottingham Trent University is made up of four different campuses:

- City Campus (located in Nottingham city centre)
- Clifton Campus (located four miles south of the city centre)
- Brackenhurst Campus (located 13 miles north east of the city centre, near Southwell)
- Creative Quarter Campus (Home to our Confetti Institute of Creative Technologies)





Clifton Campus

Nottingham City Transport operates the Go2 Uni 4 bus service between City Campus and Clifton Campus. The Clifton Campus bus stop is located by the Benenson building, and the bus drops you off on South Sherwood Street near the City Campus before travelling to Burton Street for the journey back to Clifton. The Go2 Uni 4 bus runs Mondays to Fridays during term-time only. This service does not run at weekends.

You can also catch Navy Line 1 which stops on Clifton Lane near the Main Gate to Clifton Campus and drops you off in the Market Square in the city centre. This service runs on weekdays and weekends, and also operates outside of term-time.

The journey takes approximately 25 minutes. Tickets cost £2 each way or £3.70 for an all-day ticket, and you will need the exact fare as bus drivers do not give change. Visit the Nottingham City Transport website for timetables and route maps: www.nctx.co.uk

You can also access Clifton Campus from Nottingham city centre by tram. The tram has a stop on Goldsmith Street, in the middle of City Campus, and stops at Southchurch Drive, which is a 20 minute walk to Clifton Campus. All day tickets cost £3.50. Visit www.thetram.net for information on timetables and maps.

Brackenhurst Campus

Brackenhurst Campus is also connected to Nottingham city centre by the Nottingham City Transport Pathfinder 100 bus service, which runs all year round. The service departs from King Street, (located just off the Market Square) and drops you off on the main road outside Brackenhurst Campus.

The journey takes approximately 40 minutes. Visit the Nottingham City Transport website for timetables, route maps and ticket prices: www.nctx.co.uk

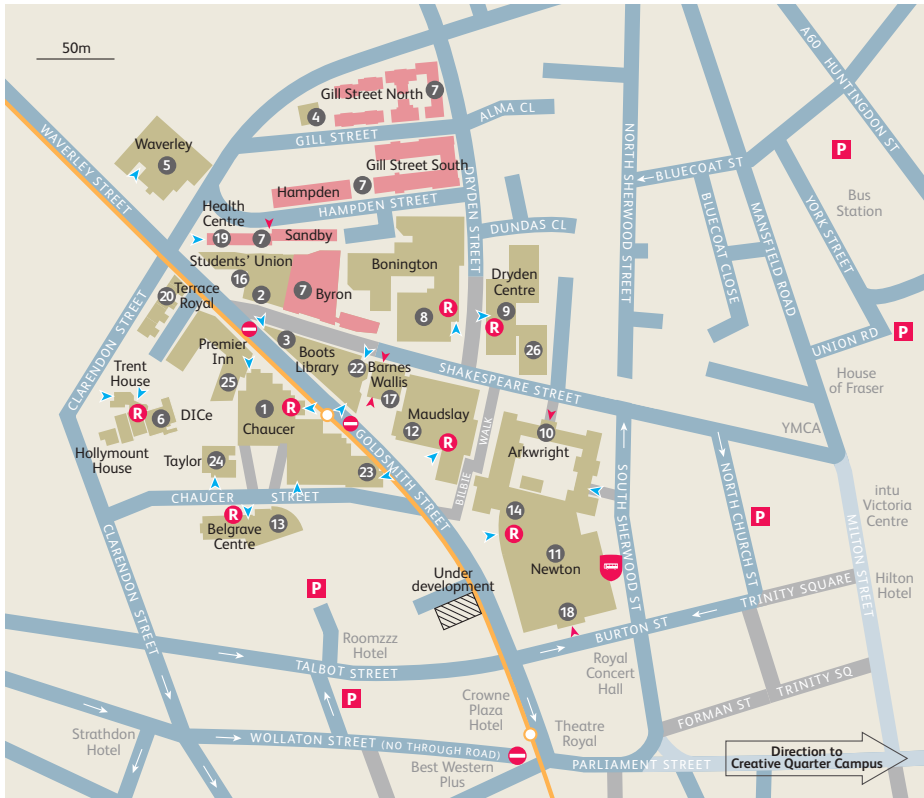
Winter Starter Checklist

Starting at university can feel like a whirlwind of new people, new places and new experiences. Use this checklist to keep a record of what you've done and what's still on your to-do list.

- Find out where and when your course induction is taking place:
www.ntu.ac.uk/induction
- Collect your Winter Welcome wristband from your subject administrator, which will give you free entry to some events.
- Read through this booklet and identify the welcome events you want to attend.
- Complete your enrolment: **www.ntu.ac.uk/starting_at_ntu/enrolment**
- Take part in all your course induction events and meet your classmates.
- Join our Facebook and Twitter sites to start making friends and keep up to date:
 - **www.ntu.ac.uk/current_students/social_media**
 - **www.facebook.com/NTUInternational**
 - **[@NTUoverseas](https://twitter.com/NTUoverseas)**
- Find out about what your Students' Union has to offer, including joining a student society and meeting your student officers: **www.trentstudents.org**
- If you're a budding musician, discover how you can get involved in music at NTU:
www.ntu.ac.uk/music
- Learn more about our sports facilities, and consider signing up for our special sports membership offer for January and February starters: **www.ntu.ac.uk/sport**
- Browse our programme of library workshops designed to help you develop your study, academic writing, maths, and information literacy skills:
www.ntu.ac.uk/developingskills
- And finally, make the most of all the great stuff on offer and have a fantastic time studying with us!



City Campus



50 Shakespeare Street.....	26
Academic Registry.....	9
Arkwright building.....	10
Barnes Wallis building.....	17
Belgrave Centre.....	13
Bonington building.....	8
Bonington Gallery.....	8
Bookshop.....	1
Boots Library.....	3
Business Innovation Team (BIT).....	1
Central Admissions.....	9
Central Court.....	14
Centre for Broadcasting & Journalism.....	23
Chaucer building.....	1
City Sports Centre.....	2
Coffee bars.....	1 8 14
Djanogly International Centre (DICE).....	6
Dryden Centre.....	9
Employability Centre.....	14
Finance Office.....	9
Global Lounge.....	1

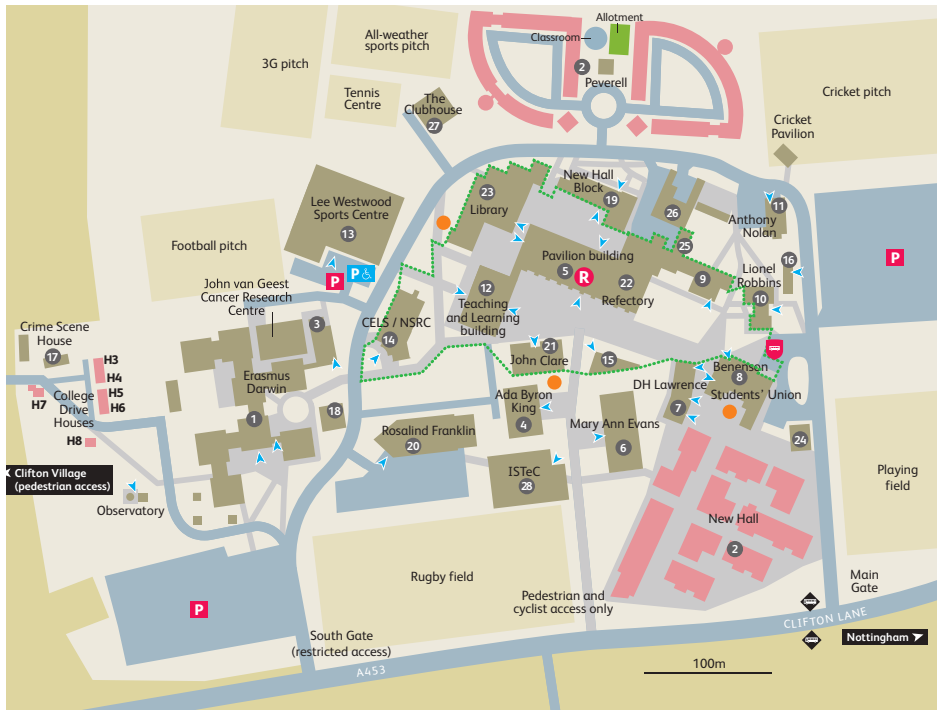
Security..... 3
 Tel: 0115 848 2468

Health Centre.....	19
Human Resources.....	9
International Development Office.....	9
IoD Business Centre.....	18
Maudslay building.....	12
Music Centre.....	25
Newton building.....	11
Nottingham Conference Centre.....	18
Nottingham Language Centre.....	6
Nottingham Trent International College (NTIC).....	13
Notts TV.....	23
Occupational Health and Wellbeing.....	4
Prayer Facilities.....	6
Print Shop.....	1

Safety Office.....	9
Shops.....	16
Sir Harry and Lady Djanogly Lecture Theatre.....	22
Student Accommodation Services.....	14
Student residences.....	7
Student Services Centre.....	14
Student Support Services.....	14
Students' Union.....	16
Taylor building.....	24
Terrace Royal.....	20
Trent Lets.....	1
The Hive.....	12
Waverley building.....	5

One-way street	Main reception
Pedestrian street	Student residences
Buses, taxis, cyclists and blue badge only	University buildings
Public car parks	Tram route and stops
Entrance	No entry
Entrance with wheelchair access	Go2 Uni bus stop

Clifton Campus

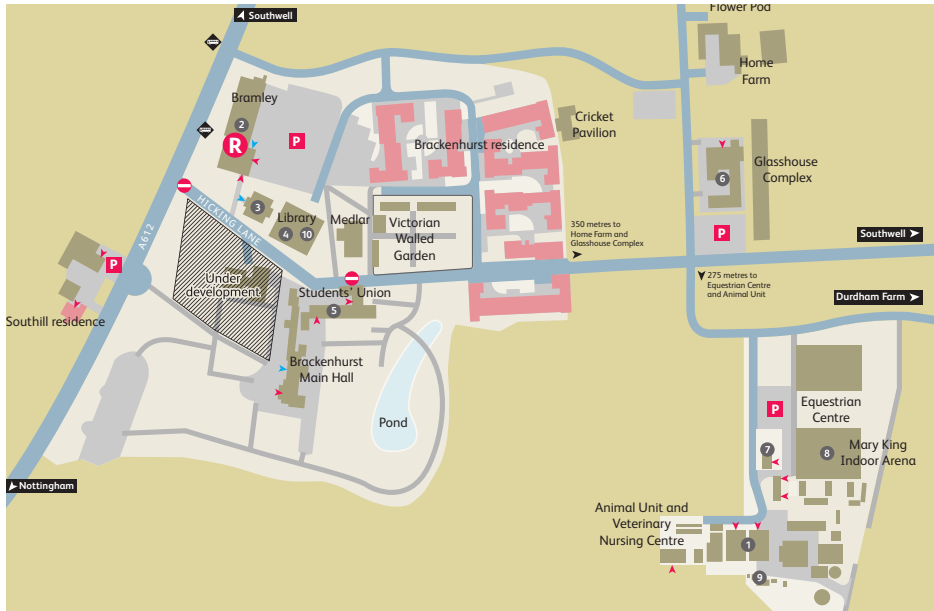


Ada Byron King building.....	4	Global Lounge.....	6	Natural Sciences Research Centre (NSRC).....	14
Anthony Nolan Trust Research Centre.....	11	Health Centre.....	9	New Hall Block.....	19
Benenson building.....	8	Imaging and Display Research Facility.....	18	Pavilion building.....	5
Bookshop.....	15	Interdisciplinary Science and Technology Centre.....	28	Print Shop.....	7
Catalysis and Nanoscience Laboratory.....	16	John Clare lecture theatres.....	21	Rosalind Franklin building.....	20
CELS building.....	14	Lecture theatres.....	12 14 19 21	Student residences.....	2
Coffee bars.....	5 8	Lee Westwood Sports Centre.....	13	Student Services Centre.....	9
Crime Scene Training Facility.....	17	Library.....	23	Students' Union.....	8
DH Lawrence.....	7	Lionel Robbins building.....	10	Supermarket.....	7
Employability team.....	5	Maintenance.....	26	Teaching and Learning Building.....	12
Erasmus Darwin building.....	1	Mary Ann Evans building.....	6	The Clubhouse.....	27
Finance Office.....	9	Natural Sciences Research Centre (NSRC).....	14	The Port bar and diner.....	8
Gatehouse.....	24			The Refectory.....	22
				Wellbeing Centre.....	25

Security..... 19
Tel: 0115 848 6600

One-way	Student residences
Pedestrian walkway	University buildings
Visitor parking	Bus stops
Disabled parking	No entry
Entrance with wheelchair access	Go2 Uni bus stop
Main reception	Designated smoking area
Green Zone – This is a smoke-free and traffic-free area	

Brackenhurst Campus

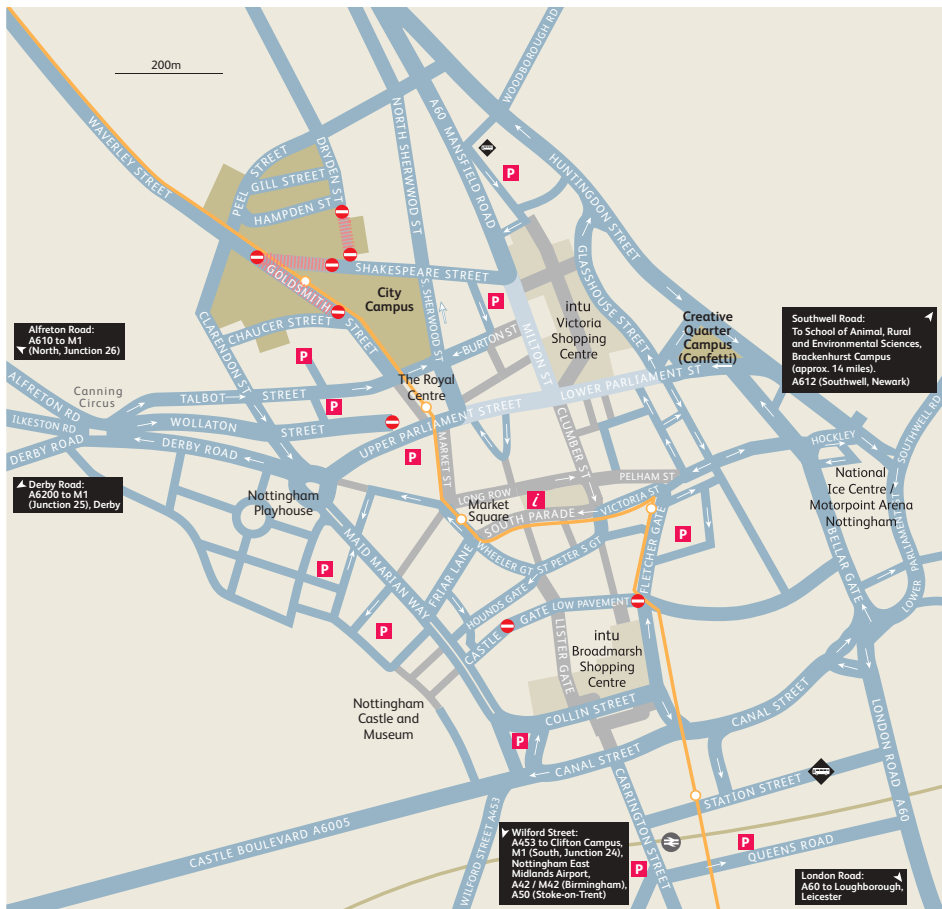


Animal Unit and Veterinary Nursing Centre	1
Brackenhurst Farm House	9
Brackenhurst Schools Unit	6
Café	5
Employability Centre	2
Equine Office and Classroom	7
Library	4
Mary King Indoor Arena	8
Pippin Cottage	3
Reception and Bramley Teaching Block	2
Students' Union	5
Student Support Centre	10
Workshops	6
Security	3

Tel: 01115 848 5262

Pedestrian walkway	Student residences
Parking	University buildings
Entrance	Bus stops
Entrance with wheelchair access	No Entry from Term 2 (January 2018)
Main reception	

City centre



- One-way street
- Pedestrian street
- Buses, taxis, cyclists and blue badge only
- General parking
- University buildings
- Bus station
- Railway station
- No entry
- Tram route and stops
- City Information Point





Nottingham Trent University
50 Shakespeare Street
Nottingham
NG1 4FQ
Tel: +44 (0)115 941 8418

www.ntu.ac.uk

Nottingham Trent Students' Union
The Students' Union
Shakespeare Street
Nottingham
NG1 4GH
Tel: +44 (0)115 848 6200

www.trentstudents.org

**THE AWARDS
2017** | **WINNER
UNIVERSITY
OF THE YEAR**



Publicity photography and filming

Filming and photography will take place at these events and any images and footage captured may be used for Nottingham Trent University's publicity purposes, such as within the prospectus or course brochures, within internal and external newsletters, on the University's website, on a range of social media channels, advertising the University publicly and may be provided to local or national newspapers or educational magazines as well as in future Welcome Week advertising. If you do not wish your image to be used, please notify a member of staff upon arrival.

This leaflet can be made available in alternative formats.

Event details are correct at the time of going to print, please check the University's Facebook page / website for any updates to events. Events may be subject to cancellation without notice by the University. Any tickets purchased for events which are subsequently cancelled by the University will be refunded in full.

© Nottingham Trent University and may not be reproduced or transmitted in any form in whole or in part without the prior written consent of Nottingham Trent University.

