



## Sustainability in Enterprise (SiE) - Eligibility criteria

Businesses must be SMES based in the Nottingham SUDS area to be eligible for support via this project.

### Nottingham SUDS area

Businesses should be able to demonstrate economic impact through location of all or part of their business in the Nottingham [SUDS area](#). This must be evidenced by the Company being registered within this area, or having publicly available information showing they are trading out of this area. The SUDS area includes the following Local Authority areas:

- All Nottingham City Council area
- All Broxtowe Borough Council area
- The following wards in Ashfield District, Gedling and Rushcliffe Boroughs:

#### Ashfield

- Hucknall Central
- Hucknall East
- Hucknall North
- Hucknall West

#### Rushcliffe

- Abbey
- Bingham East
- Bingham West
- Compton Acres
- Cotgrave
- Edwalton
- Gamston North
- Gamston South
- Lady Bay
- Lutterell
- Musters
- Radcliffe on Trent
- Ruddington
- Trent Bridge

#### Gedling

- Bestwood St Albans
- Calverton
- Carlton
- Carlton Hill
- Cavendish
- Colwick
- Coppice
- Daybrook
- Ernhal
- Gedling
- Netherfield
- Phoenix Plains
- Porchester
- Redhill
- Woodthorpe

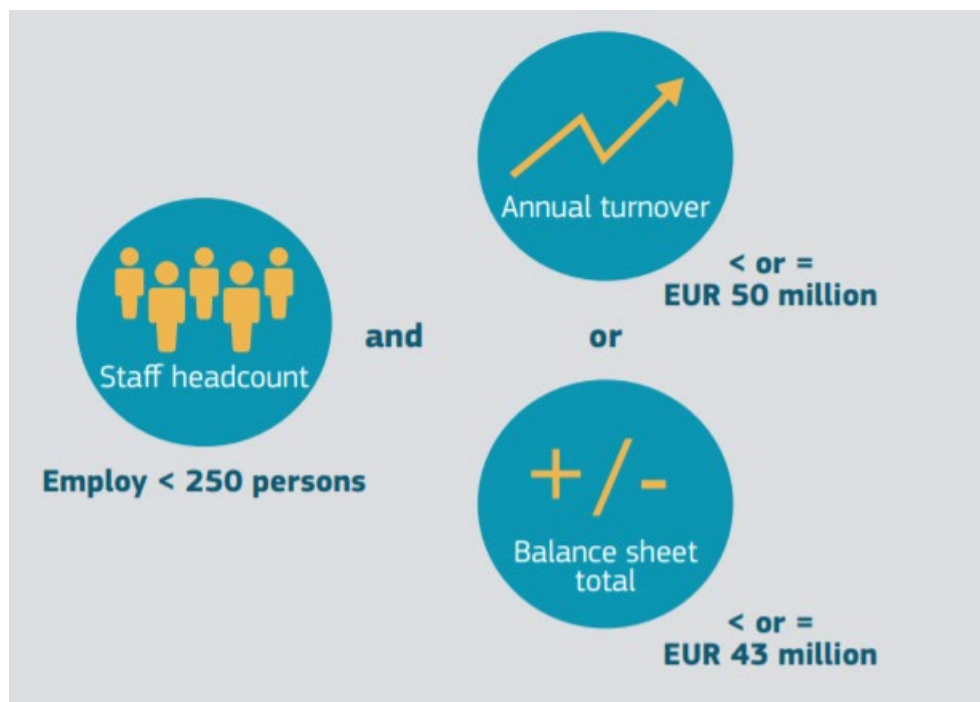


## SME eligibility

NTU follows the SME Definition as published by the European Commission user guide available at the link below:  
<https://ec.europa.eu/docsroom/documents/42921>

SMEs are enterprises engaged in an economic activity which meet the following criteria:

- employ **fewer than 250 persons** AND
- have either an **annual turnover not exceeding EUR 50 million** or an **annual balance sheet total not exceeding EUR 43 million**.



You don't not need to fit both the turnover and the balance sheet criteria and may exceed one of them without impact on SME status. When making calculations, you should use the data contained in the last approved annual accounts. The staff headcount **cannot be exceeded**.

SME status may be impacted if your business has a present relationship with another enterprise. You could fall under one of three categories depending on the relationship:

- autonomous: either fully independent or with minority partnerships of less than 25% (autonomous businesses do not need to take into account any partner data)
- partner: partnership with other enterprises of at least 25% but no more than 50%.
- linked enterprise: partnership with other enterprises more than 50 %.

If you believe you may be a partner or linked enterprise, please use the [SME definition user guide](#) to determine which category your business falls under and what partner data you need to take into account when calculating staff numbers / turnover / balance sheet total. If you are unsure whether you qualify for support, please contact us at [sie@ntu.ac.uk](mailto:sie@ntu.ac.uk)