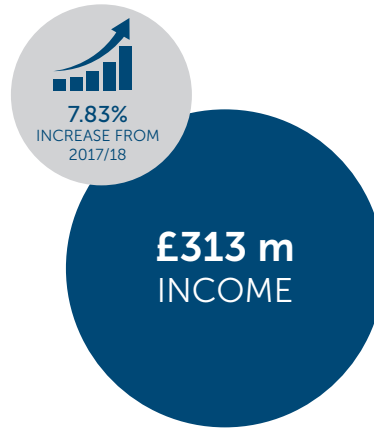
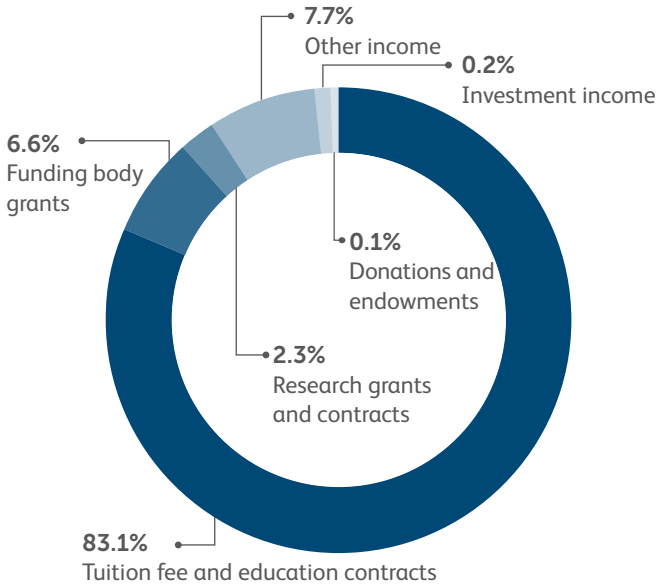


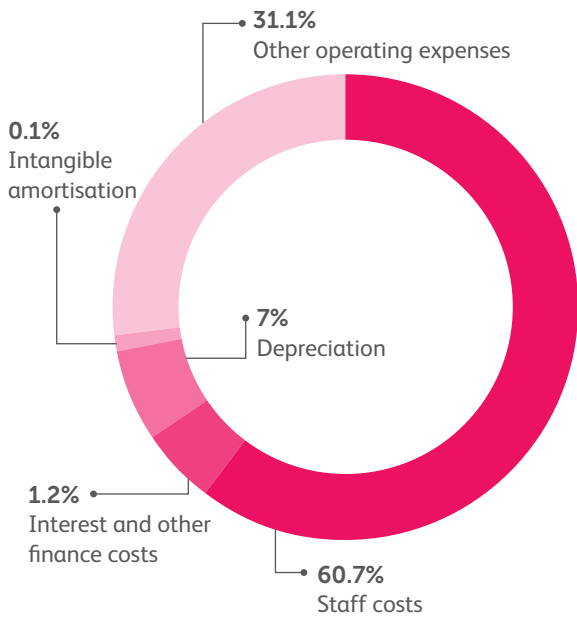
FINANCIAL INFORMATION

2018/19

Income



Expenditure



 Total surplus for reinvestment before pension adjustments: **£20 million**



Manage short-term fluctuation in income



Demonstrate financial health to regulators and lenders



Reinvestment in future infrastructure and student experience



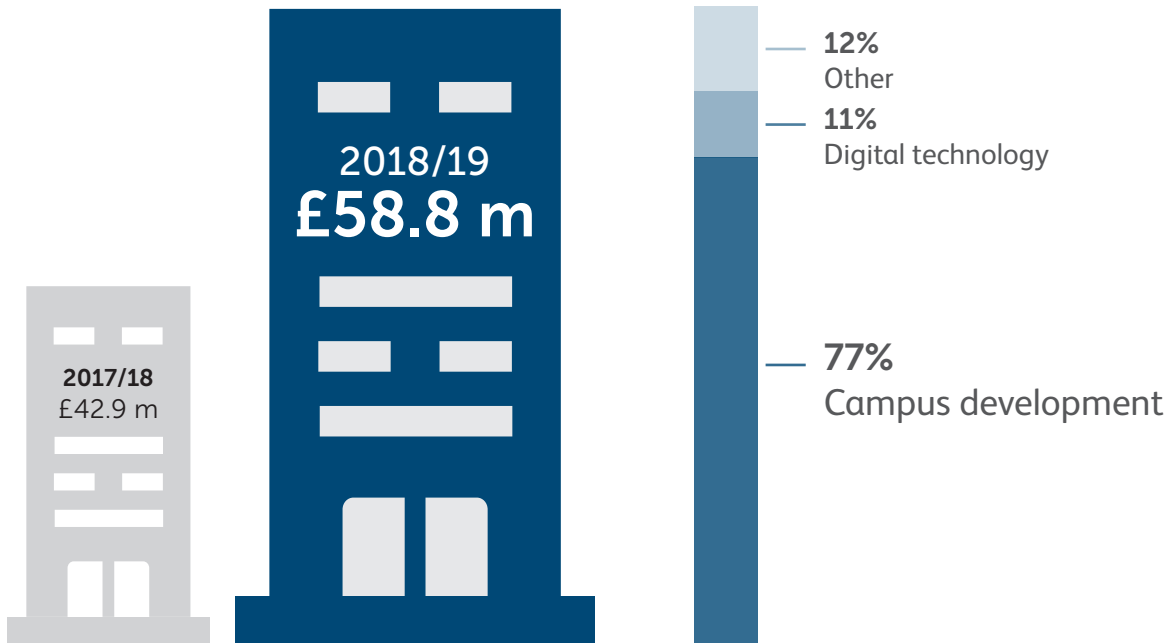
Maintain financial sustainability

CAPITAL EXPENDITURE

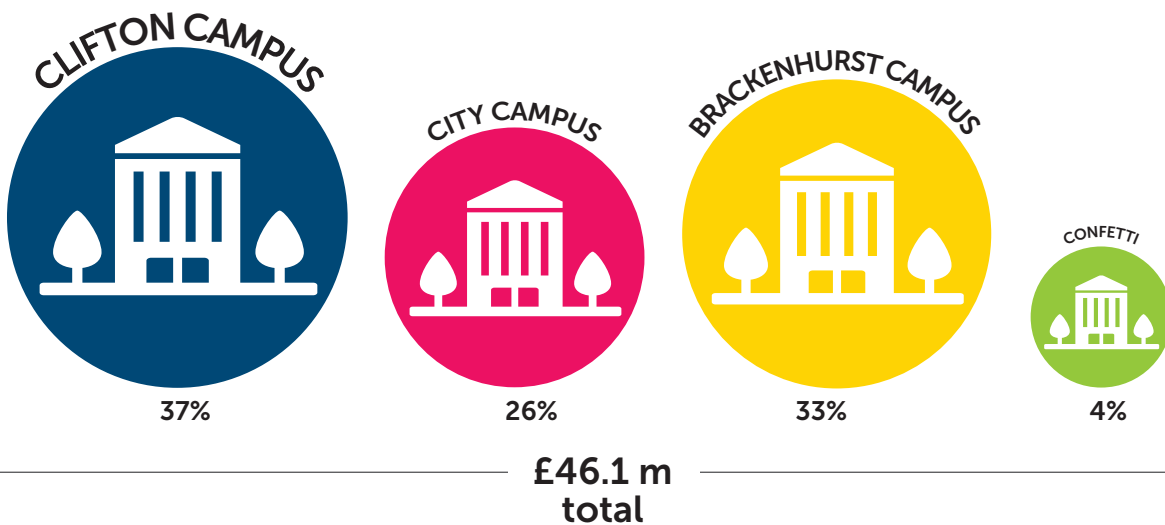
How much did we spend on capital projects last year?



SUMMARY SPEND ON CAPITAL PROJECTS



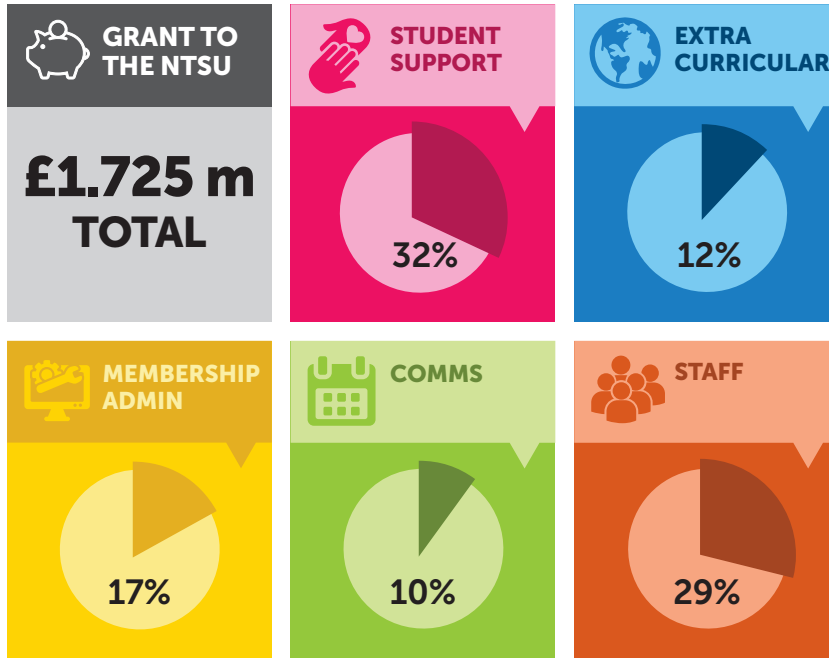
CAMPUS DEVELOPMENT



NTSU

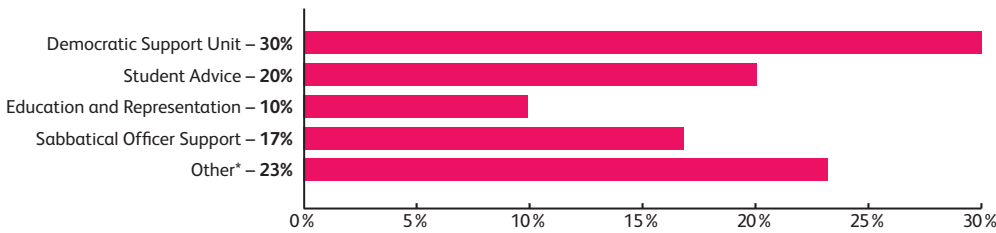
(Nottingham Trent Students' Union)

BUDGET BREAKDOWN



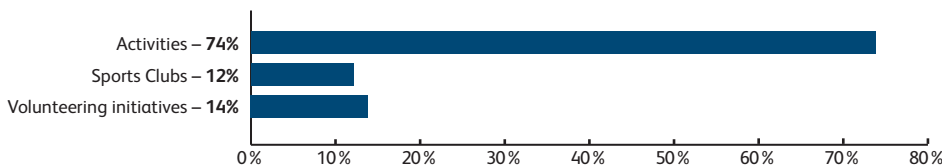
FURTHER BREAKDOWN

STUDENT SUPPORT

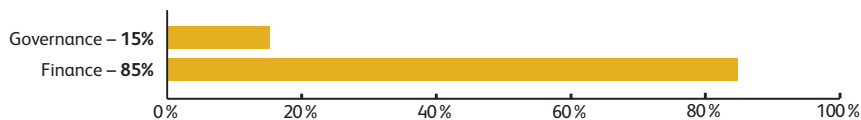


* Student Engagement, Skills Training, Welfare and Equal Opportunities, Halls, Vehicles

EXTRA CURRICULAR



MEMBERSHIP ADMIN



STUDENT SUPPORT



2,650 
COUNSELLING
SESSIONS ATTENDED BY STUDENTS

2,125 
DROP IN
SESSIONS OFFERED



1-TO-1
SPECIALIST SERVICES


5,800+
HOURS

 **100%**
SATISFACTION
RATE



81 DEDICATED SPECIALISTS
SUPPORTED **OVER 9,800** STUDENTS
WITH PROGRESSION 

3,400+
SPECIALISED
ADJUSTMENTS
IMPLEMENTED


 **7,723 ENQUIRIES**
SOLVED
BY STUDENT SERVICES CENTRE

WORKING WITH
38 EXTERNAL
PARTNERS
TO SUPPORT 
STUDENT HEALTH AND WELLBEING

CenSCE

(Centre for Student and Community Engagement)

WIDENING PARTICIPATION



DEVELOPING NTU STUDENTS



Over 1,000 paid and voluntary experiences provided to current students



Recruited, trained and deployed 600 undergraduate mentors as part of a university-wide peer mentoring scheme (co-created with students for students)



BREAKDOWN OF ACTIVITIES AND PARTICIPANTS by CenSCE projects:



EMPLOYABILITY

83%

OF NTU GRADUATES
IN GRADUATE ROLES
AFTER 6 MONTHS



97%

OF NTU GRADUATES
IN EMPLOYMENT
AFTER 6 MONTHS

1,701

EMPLOYABILITY EVENTS
AND WORKSHOPS



5,963

PLACEMENTS
UNDERTAKEN



55%
INCREASE

in students engaging with
employability over the
past 3 years



100+

STAFF

WITHIN NTU EMPLOYABILITY TEAM



**'EXCEPTIONAL
SERVICE'**

MATRIX AWARD

FOR INFORMATION AND GUIDANCE



12,343

1-to-1 appointments
attended by **6,017**
individual students