

# Nottingham Trent University Annual Sustainability Report 2017-18

*Enabling a culture of Sustainable Development across NTU,  
enhancing the student and staff experience and creating a global  
legacy.*



# About Nottingham Trent University

**The big challenges that our world faces are complex. We are working to solve them by sharing our ideas, expertise and technology across the University and with our partners.**

As one of the UK's largest Universities, with 30,925 students and 3,323 members of staff, Nottingham Trent University (NTU) acknowledges its activities will significantly impact the environment at both local and global levels. As a responsible institution, covering 4 campuses, we promote environmental and sustainability awareness and education, in accordance with our strategic plan. Disseminated by the University Executive Team, these build on current policies seeking to engage all staff and students, inspiring and embedding environmental principles for the future of NTU and for life.

One of NTU's five key research themes is 'Sustainable Futures' and ten research groups have a sustainability focus. This recognises that the resources on Earth are finite, but global population and levels of consumption keep growing. To prepare for the future, we must adapt the ways in which we design, make and use products, generate and use energy, and grow food. Research at NTU explores the challenges of creating a world in which resources are used wisely, climate change mitigated through low carbon strategies, circular economy strategies prevent waste, and pollution is minimised.



# Sustainable Development at NTU

While the work of the University's research teams are at the forefront of discovering pioneering approaches to sustainable development, as a University we also believe in leading by example. We are proud of our world-class campuses complete with green spaces, sustainable buildings and transport infrastructure.

The United Nation's 17 [Sustainable Development Goals](#) (SDGs) influence University strategy and the University is a signatory to the SDG Accord. As well as inspiring and celebrating the University's role in embedding the goals in all aspects of its work, it is also a commitment to share what NTU learns with other institutions annually, and to report on progress made.

The [Sustainable Development Team](#) and [Green Academy](#) work in partnership with other departments to continue to embed sustainability into everyday life at NTU.

This Annual Report sets out how Nottingham Trent University has worked towards fulfilling the UN's SDGs in the academic year 2017-18.



# Awards

In working towards meeting the aims of each theme the University is continuing to implement sustainable solutions at local and community levels supporting the global effort to meet the SDGs by 2030.

We have held the internationally recognised [ISO 14001 Environmental Management System](#) and [EcoCampus Platinum](#) since 2012.

The following projects and achievements reflect our vision and capability in leading change for sustainable development.



Awarded 3<sup>rd</sup> place in the 2017 **People and Planet University League**.

Proud Client Partners of the **Considerate Constructors Scheme**.



NTU ranked 5<sup>th</sup> in the **UI Green Metric World University Ranking** in 2017.



NTU is the first university to achieve a **Gold LiFE** accreditation.



Prof. Simmons won the 2017 **Green Gown Leadership award** for her commitment to sustainability.



# Carbon & Energy



Reducing energy consumption and carbon emissions is vital for any sustainable business or institution.

## How are we doing?

- Carbon emissions are **47% lower** per full-time equivalent staff and student than our 2005-06 baseline.
- We are supporting **local businesses** to reduce their carbon footprint using student expertise.
- Our research centre **CIE-MAP** helps the industry to reduce carbon emissions.
- Solar PV installations at all 4 campuses can now generate a total capacity of **396kW**.



# Catering & Waste



Nottingham Trent University is proud to offer a comprehensive range of seasonal, local and ethically sourced meals across our main catering outlets.

Across NTU's estate you will see recycling bins encouraging everyone to recycle their waste. We are always aiming to improve our recycling rates by asking our staff, students, and visitors to follow the waste hierarchy.

## How are we doing?

## How are we doing?

### Food

### Waste

- **194 portions** of Fairtrade desserts served by Catering outlets over the Fairtrade Fortnight period
- Silver Food for Life award for sustainable sourcing of ingredients in NTU catering: **16% local & 5.8% organic**
- **£755,696** spent on Fairtrade products at NTU this year
- **200** Low carbon meals served during Green Week

- **103 tonnes** of clothes, books and household items donated to the British Heart Foundation
- **98%** of all waste is diverted away from landfill and **26%** is sorted on site
- Approximately **80** operator chairs reused via Constellations and **3** surplus filing cabinets donated to BHF
- **Plastic Planet** campaign launched in 2018 to help the University to reduce its consumption of single-use plastics



# Biodiversity

NTU's estate comprises over 240 hectares of land across our four campuses. These different land types are valuable assets to the University, community and natural world. We are working hard towards conserving the biodiversity found on and around these spaces.

## How are we doing?

- Finding better ways to **farm and conserve nature together** at Brackenhurst through the Carbon Woodland planting scheme
- A **new habitat masterplan** for Brackenhurst has created 4 new pond habitats, 3 new woodlands and a new management plan for our hedgerows
- **300,000 viewers** watched the Peregrine Falcons in 2017-18
- Our Greening the City initiative is transforming areas from grey to green space and has led to the creation of **3 new pocket parks** and **4 green roofs**
- **2 Green Flag Awards**



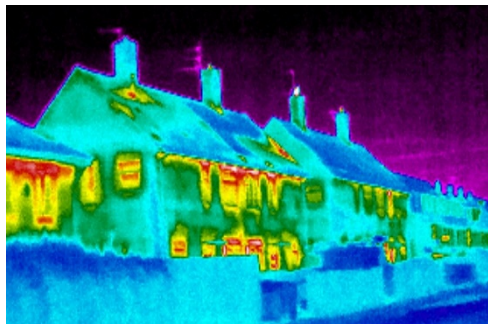
# Sustainable Construction



NTU's estate is rapidly developing and changing in order to provide the best possible facilities for our students and staff. Our policy is to ensure that every new construction project is rated at least BREEAM Excellent in order to display best-practice in sustainable construction.

## How are we doing?

- **6 BREEAM 'Excellent' buildings**, including a new carbon negative hub at Clifton, and **5** in design or construction stages
- Taking a multidisciplinary approach to sustainable building design research with **iSBET**



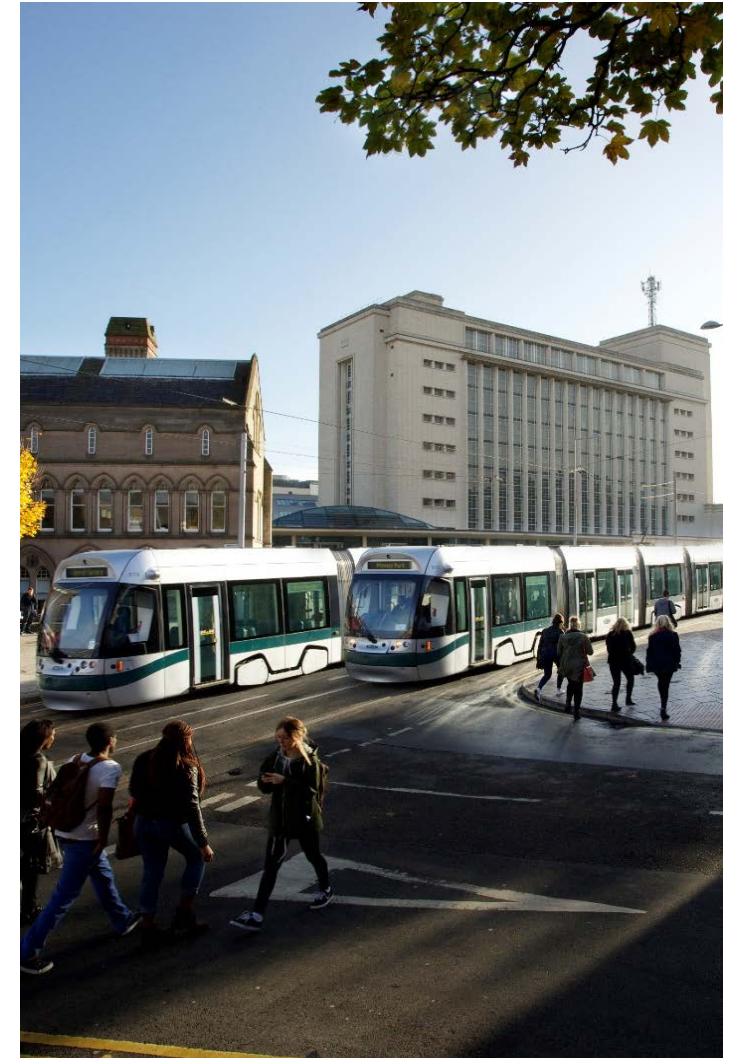


# Travel

NTU is committed to providing and influencing the development of responsible transport solutions as part of our corporate, strategic and local plans.

## How are we doing?

- **2** new car parks,
- **4** EV charge points available,
- **2** NTU bus routes (go2uni4 to clifton and 100 to brack)
- **150 bikes** available for students and staff to hire
- Promoting sustainable travel to the University:
  - **44%** of commuters use public transport
  - **29%** cycle or walk
  - **27%** drive to NTU.



# Engagement and Education



Integrating social, environmental and economic themes in learning and teaching is a strategic priority as shown in our Strategic Plan. Armed with the right knowledge and skills, NTU graduates are capable of contributing to a brighter future. NTU is committed to sending students out into the world as global citizens, building links between sustainability, literacy and employability.

## How are we doing?

- Green Impact tasks completed by staff teams, to bring sustainability into the office saved at least **9,355kg CO<sub>2</sub>**
- **349 students** completed Sustainability In Practice in 2017-18
- Leading the sector in Education for Sustainable Development and accredited in **Responsible Futures**
- The **Sustainability Action Forum** brings together staff from different Schools and Departments



# Global legacy



NTU plays a leading role in the social, cultural, economic and environmental development of Nottingham, East Midlands and the United Kingdom. The Sustainable Development Team shares our expertise with our community and shows others what best practice in sustainability looks like.

## How are we doing?

- **26,000** local school pupils reached through NTU outreach activities
- Volunteers grow fruit and vegetables for donation to local charities at our **Foodshare** allotment
- Delivered a lesson on Fairtrade to **4** classes of local primary school children (**129** children in total)
- Over **1000** student volunteers, and **500 staff** contributing over **50,000** and **8,500 hours** respectively, helping local and global communities in 2017-18
- Driving **responsible corporate practice** in Nottingham Business School
- Our Green Leaders scheme has enabled **4** student-led projects to make a sustainable difference at NTU
- In total, NTU suppliers completed **277** sustainable actions on the Supplier Engagement Tool



# Get in touch and get involved

**Follow us on social media to find out more or get in touch**

Website: [ntu.ac.uk/sustainability](https://ntu.ac.uk/sustainability)

Email: [sust.dev@ntu.ac.uk](mailto:sust.dev@ntu.ac.uk)

 [@NTUEnvironment](https://twitter.com/NTUEnvironment)

 [@NTUSustainability](https://www.facebook.com/NTUSustainability)

 [@ntu\\_sustainability](https://www.instagram.com/ntu_sustainability)

