

# Welcome to Clifton Campus



NOTTINGHAM  
TRENT UNIVERSITY



# HOW MANY STUDENTS STUDY AT CLIFTON CAMPUS?



# Clifton Campus

Approximately 9,000 students study here.

Clifton Campus is a self-contained student village with all the facilities you need in one place.

Nottingham Institute of  
Education

School of Arts and Humanities

School of Science and Technology

# WHERE IS CLIFTON CAMPUS?



Clifton is 6 kilometres/4 miles from the city centre.



Go2Uni/Number 4 bus service runs to and from the city centre every 6-10 minutes.



# Clifton Campus - Facilities



Accommodation, Students' Union, Global Lounge, cafe, supermarket, bookshop, 24-hour computing rooms, library, multi-million pound sports hall



# WHERE DO CLIFTON STUDENTS LIVE?



# New Hall



# Peverell



# **SPORTS @ CLIFTON CAMPUS**



# Sport Facilities

2 Sports Halls  
Exercise Studio  
65-station gym  
Squash courts  
Astro-turf pitch  
3G playing surface  
Multiple grass pitches  
The Clubhouse  
Sports Therapy suite  
High Performance Centre

NTU



# Sports Clubs and Scholarships

£10,000

Elite Sports Scholarships

With  
60  
sports  
clubs  
to suit  
any  
interest



# HOW HAS THE CAMPUS CHANGED?



# Regeneration and Investment

## Investment in Clifton campus of £150 million

- Widening the A453 road, connecting M1 motorway, East Midlands International Airport and Nottingham
- Tram network extended to Clifton from city centre
- Clifton campus regeneration
  - ✓ Pavilion
  - ✓ Teaching and Learning Suite
  - ✓ £5 million Library refurbishment
  - ✓ Refectory refurbishment
  - ✓ ISteC Building – now open
    - Engineering Teaching and Research Building (Opening soon!)
    - Medical Technologies Centre (Opening soon!)

# ISTeC Building

**Interdisciplinary Science and Technology Centre (ISTeC).**

- £11 million investment in a brand new STEM teaching facility
- Courses designed by NTU and industry experts
- State-of-the-art laboratories for:
  - Bioscience
  - Computer Science
  - Physics
  - Chemistry
  - Sport Science
  - Engineering
- A hub for practical learning and hands-on workshops
- Robot arena where students can use humanoid robots!

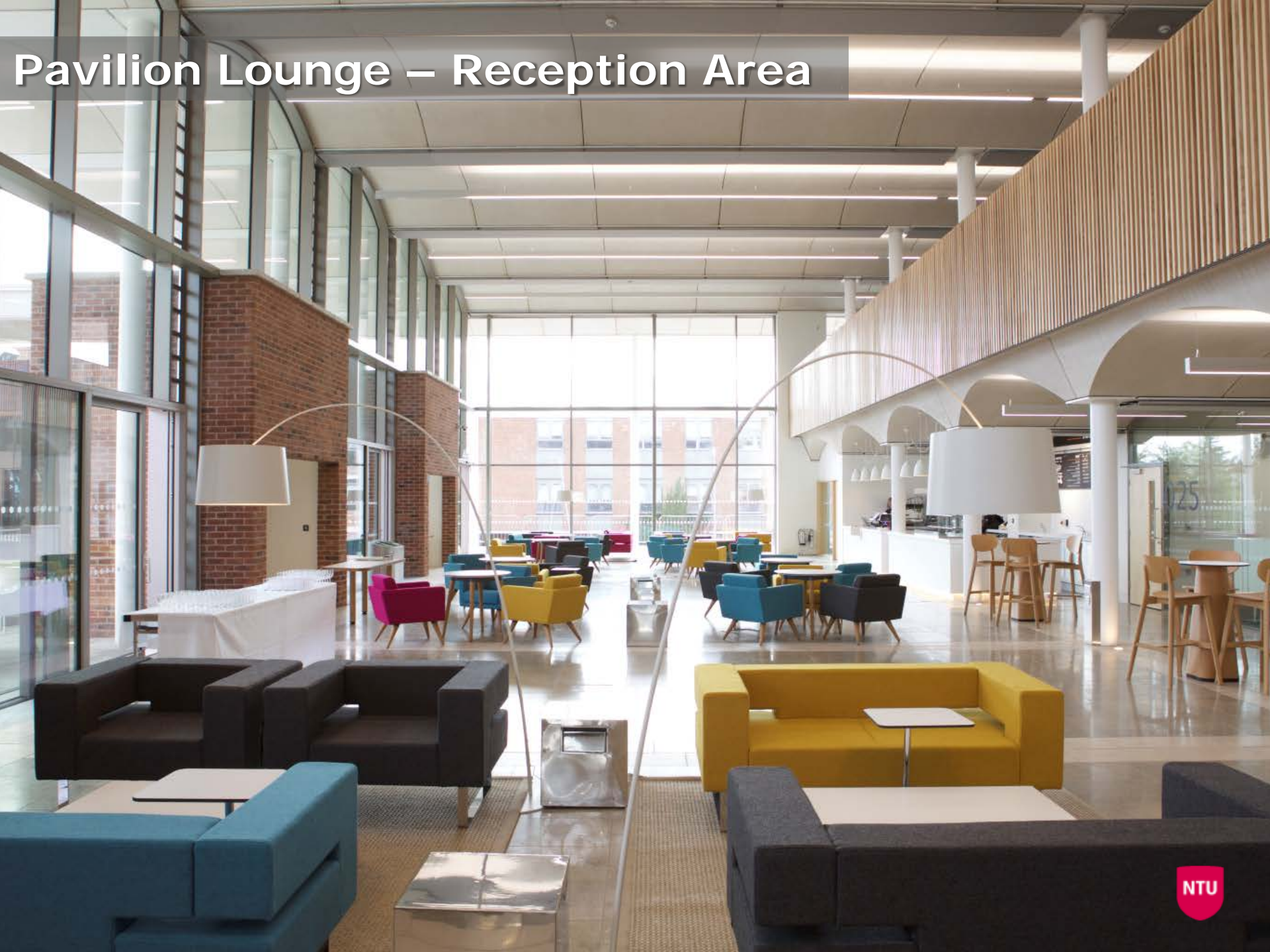
# Pavilion Plaza



# Main Entrance



# Pavilion Lounge – Reception Area



# Teaching and Learning Building



# WHICH COURSES ARE TAUGHT HERE?



# Nottingham Institute of Education

## Subject areas

- Primary Education
- Childhood Studies
- Education Studies
- Special and Inclusive Education
- Educational Support
- PGCE

## Popular courses

- BA (Hons)/MA Education
- BA (Hons) Primary Education
- BA (Hons) Childhood: Learning and Development
- PGCE – Multiple Specialisms

## Highlights

- Extensive partnership links with over 600 early-years settings, primary schools, secondary schools, colleges and academies
- Specialist international placements – recent locations include Mombassa, Brunei, Namibia and Thailand!
- 100% of our MA Education graduates are employed or engaged in further study within six months of leaving NTU

# School of Arts and Humanities

## Subject Areas

- English Studies
- Creative Writing
- History
- Media
- Global Studies
- European Studies
- Philosophy
- Linguistics
- Communication & Society
- Film & TV
- Museum and Heritage Development
- Journalism (City)
- TESOL (City)
- English Language Teaching (City)

## Highlights

- Combined Studies / Joint Honours
- International Exchange / Study Abroad
- University Language Programme
- Industry links
- Work placements and company projects

## Popular courses

- BA (Hons) Media
- MA Media & Globalisation
- MA Broadcast Journalism
- MA International Development
- MA English Language Teaching (TESOL)

Research Excellence Framework (REF) 2014 recognised the School for producing world-leading and internationally excellent research

# School of Science and Technology

## Subject Areas

- Chemistry
- Biochemistry
- Biological Sciences
- Microbiology
- Pharmacology
- Biomedical Science
- Physics
- Astrophysics
- Mathematics
- Forensic Science
- Sport Science
- Exercise, Nutrition and Health
- Engineering
- Engineering Management
- Computer Systems
- Computer Science
- Information Technology
- 

## Popular courses

- BSc (Hons)/MSc Biomedical Science
- BSc (Hons)/MSc Computer Science
- BSc (Hons) Sport & Exercise Science
- MSc Engineering Management
- MSc IT Security

“Putting theory into practice”

500 hours of laboratory experience across courses such as BSc Biomedical Science!



# Science and Technology - Facilities



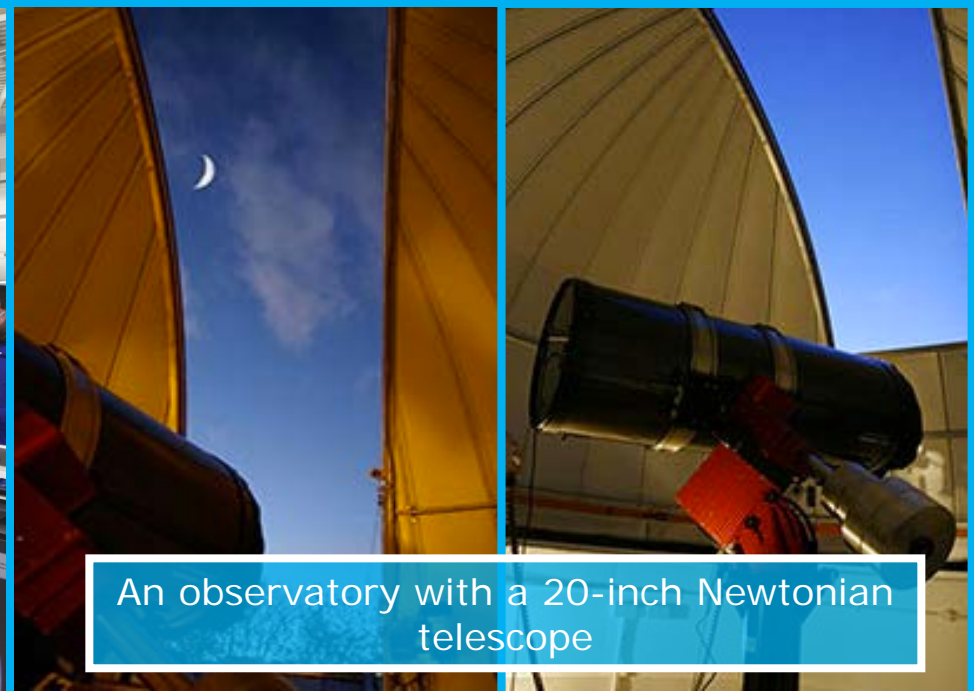
Crime scene training facility



A British Olympic Association – approved environmental chamber



The Rosalind Franklin Building  
"Super lab"



An observatory with a 20-inch Newtonian  
telescope

# Cancer Research @ NTU

## Home to the Antony Nolan Trust

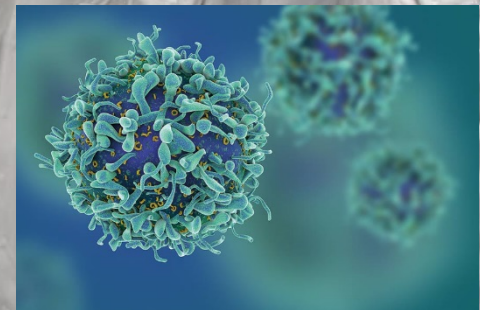
The charity which manages the UK's most successful bone marrow register.

Established at NTU, it's only regional scientific centre outside London.

## John van Geest Cancer Research Centre

Improving the diagnosis and management of breast and prostate cancers.

Developing effective vaccines and immunotherapies.



**JOHN VAN GEEST**  
CANCER RESEARCH CENTRE  
Nottingham Trent University

**Any questions? Please let me know!**

