



Brackenhurst College Course Guide

2024 entry



What's inside?

Hello	4	Animal courses	18
Why choose Brackenhurst?	6	Agriculture courses	26
Student stories	8	Equine courses	32
Study programme	12	Conservation courses	36
Your future	14	Student support	40
How to apply	16	How to get to Brackenhurst	42

Open days

If you want to find out what life at Brackenhurst is really like, come and see us at an open day.

Meet our tutors, look around the facilities and get more information about studying here. Your friends and family are more than welcome to come along too.

Go to www.ntu.ac.uk/opendays to reserve your place

Take a closer look



Head to ntu.ac.uk/virtual-brack to explore our courses from the comfort of your home. You can access on demand subject talks, presentations and tours.



You can find out about future open day dates on our website. We also offer a virtual open day so you can visit us from the comfort of your own home.



Hello



We know that choosing your next steps is a big and exciting decision.



We hope this guide will help you find the college course that's right for you. If you're looking to study an animal, equine or land-based subject, you'll find it here.

Brackenhurst is set in stunning countryside with easy access from Nottingham city centre, with good transport links. We are part of Nottingham Trent University. We offer college courses alongside our degree courses, all taught by our skilled, experienced and supportive staff.

At Brackenhurst, you'll have access to incredible facilities. These include an animal unit, equestrian centre, farm, library and gardens and fields that are overflowing with plants and wildlife. Studying with us means that you'll be a part of an amazing learning environment. You get all the perks of being part of a big university, but you will still enjoy the comforts of a friendly college.

Most importantly, our courses reward your hard work with valuable qualifications and training. They will prepare you for the world of work, or open the door to further study. It's your future – you decide.

Eileen Swan
Head of Further Education



Why choose Brackenhurst?



In 2023 our college courses had a 96% pass rate

- You'll be studying and training in some incredible facilities including a working farm, animal unit, equestrian centre and outdoor classroom
- In our last Ofsted assessment we received a 'good' grade with some outstanding features



You can study an amazing range of animal, equine and land-based college courses

- You'll learn from our professional tutors who have lots of experience in their subjects
- Our courses offer exciting work experience opportunities – making you stand out to future employers or universities
- You'll get to go on some fantastic trips and learn from industry experts
- Our courses offer clear routes into jobs or further study
- Our friendly student support team are here if you need help with anything



- It's easy to get here – we're just a bus ride away from Nottingham city centre

Student stories



Josh Veysey



One of the questions we get asked most is 'what's a typical day like'?

Here's Josh, who studies Level 3 Land and Wildlife Management (now called Countryside Management), and Aislinn, who studies Level 3 Equine Management, to tell you.

"I couldn't have asked for better course tutors. They were so welcoming and supportive at the beginning of year one and have stayed that way ever since."

Niamh Harman
Level 3 Equine Management

Tell us about your course

Aislinn: I study Equine Management. We do everything from equine biology to exercising horses. We have three riding lessons a week, one jumping and two flatwork. There are a variety of horses to suit every ability.

Josh: I am doing Land and Wildlife Management (now called Countryside Management) in which we

are taught how to manage and conserve a variety of different habitats. The course has practical elements in which we physically do the different methods to conserve and improve the habitats we learn about during lectures.

What's it like to be a student here?

Aislinn: Being a student here is very fun because you have a lot in common with others. We do lots of different activities and there are lots of different clubs and events that you can attend.

Josh: You are immersed in the environment, which makes the course seem more realistic. It is a good place to make friends.

How do you travel to Brackenhurst and how long does it take you to get there?

Aislinn: I take the bus every day apart from the morning I have yard duties at the Equestrian Centre, then my mum drives me. The bus journey is usually around an hour long but we have a really nice coach.

Josh: I'm originally from South Africa and was eligible to receive accommodation on campus as I'm over 18.

What's your timetable like?

Aislinn: I usually start at either 9 am or 11 am, unless I have morning yard duties then I start at 7.45 am. I usually finish at 4 pm unless I have evening yard duties then I finish at 5 pm. We have a variety of both classroom lessons and practical lessons. Our lessons are around an hour to an hour and a half long.

On the Equine Management course we do one morning yard duty and one evening yard duty a week, one weekend yard duty every three weeks and five yard duty days in either the Christmas or summer holidays, depending on what year you are in.

Josh: It is a relaxed timetable. I only go to college three days a week from Wednesday to Friday. Monday and Tuesday are when we can do our work experience placements as well as doing paid work.

"The campus is beautiful. The wildlife, flowers, and animals make the place stand out compared to other colleges."

Joshua Herring
Level 3 Animal Management



Student stories



Where do you go for lunch?

Aislinn: I go for lunch in the farmhouse, or I go to the Brackenhurst shop to buy my food. There are vending machines to get snacks from and a dining hall and a café to get meals.

Josh: The dining hall, especially on Fridays when they serve fish and chips.

Tell us about your assessments

Aislinn: We have ridden and written synoptic exams in both first and second year. As well as one British Horse Society (BHS) ride safe exam.

Josh: My assignments range from writing reports to doing presentations and practical assessments when we are out in the field. I also have examinations and synoptic assessments.

What are your course tutors like?

Aislinn: I find my course tutors supportive and helpful. They want the best for everyone. The staff and lecturers are very approachable if you ever need help or advice and they explain things in detail.

Josh: They are amazing during lectures and are very supportive. They are always very energetic when they teach us.

Do you belong to any clubs or societies?

Josh: I am a member of the Brackenhurst Young Farmers Club and go to the gym down in Southwell.



Aislinn Edwards



Study programme

Study with us and you'll get more than just a course



Your study programme is tailored to you. It is designed to give you the skills and knowledge to succeed in your studies and your future career.

Qualification

You will study either a Level 2 or Level 3 qualification, or an Access to Higher Education Diploma.

Our Level 2 qualifications are equivalent to GCSEs at grades 9 – 4 (A* – C). Our Level 3 qualifications are equivalent to three A-levels.

Your course will include a mix of practical work and classroom-based study.

English, maths and IT

Develop your English, maths and IT skills with dedicated study sessions. In addition, if you still need to achieve GCSE grade 4 / C in English or maths, we'll also give you extra support to retake the exams.

Employability and work experience

You'll take part in CV-writing workshops, mock interviews and get individual support from our specialist Employability team. You'll also undertake work experience with relevant employers.

Citizenship

Explore important issues such as democracy, freedom, and British values, with lectures from expert guests.



Alongside your qualification, you'll also get additional sessions including English, maths and IT skills, citizenship, and work experience. We call this your study programme.



Meet your tutors

Our tutors are here to support your ambitions and help you achieve your dream career. They're all industry experts with a passion and in-depth knowledge of their subjects. You'll also hear from inspirational guest lecturers and industry speakers who will help bring your subject to life.

Sarah Heckford Subject Leader Animal Management

I am the Subject Leader for the Animal Management and the Animal Care courses at Brackenhurst.

I have been teaching at Brackenhurst for over 20 years and it is a fantastic place to work. I own Springer Spaniels and they come to work with me so you will meet them during your practical lessons. I have a particular interest in birds of prey and I have many years experience working with horses. I am one of a team and we are all experienced and enthusiastic lecturers. Brackenhurst provides a superb learning environment and we are very lucky to have fantastic resources on the campus. I love seeing the students come onto our programmes and develop as individuals. They thrive in our environment.

Liz Taylor Subject Leader Equine Management

I am the Subject Leader for the Equine Management course. I have been around horses all my life and have worked professionally in the industry since leaving school. I studied the British Horse Society Intermediate Instructor and Stage Four course as a student at Brackenhurst. This really kick started my career and has enabled me to progress to become a Stage Five Instructor (BHSI), a British Dressage Level Three Coach and a British Dressage List Three Judge. I like to think the knowledge I gained whilst studying at Brackenhurst and my experience in the industry, can be passed on to my students and help them in their journey to achieve a career they are passionate about.

Your future



A key part of your programme is to gain industry skills and experience. This will enable you to progress into a great career or go on to further study.

Practical sessions

You'll develop important technical skills in practical sessions appropriate to your course, such as horse riding, domestic animal handling, tractor driving, or habitat management on our estate.

Industry experience at Brackenhurst

You'll have the opportunity to work with our technical teams to develop important employment skills right here at Brackenhurst. These skills will give you more confidence and the ability to take on more responsibility.

Experience gained in industry

As part of your learning, you'll start a work placement where you will gain valuable industry experience. We will support you in choosing a suitable employer for your placement, and we will work with your chosen employer to ensure you gain the experiences you need to be 'job ready'.

Weekly careers sessions

In these sessions, you can explore your options and next steps in depth. We will help you write your CV and personal statement to help showcase your skills and experiences.

Employer visits and speakers

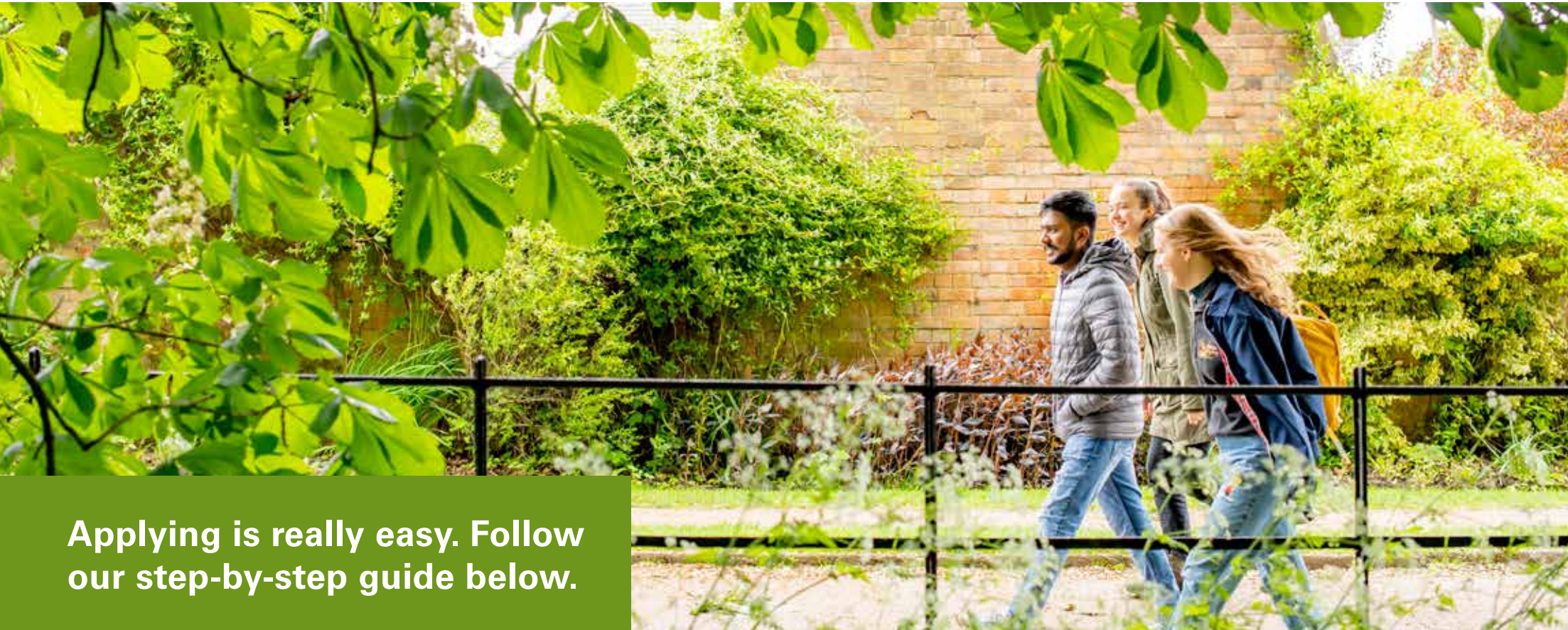
As part of your course, you will have the chance to visit and hear from experts in your field of study. These visits offer valuable insight into employment and what it is like to work in the industry.

Progress to higher education

If you're already thinking about a career path, sometimes that might require degree-level qualifications. We'll provide you with all the guidance you need throughout the university application process.



How to apply



Applying is really easy. Follow our step-by-step guide below.

Any questions?

Just drop us a line – we're here to help every step of the way. You can email us at fe.enquiries@ntu.ac.uk or give us a call on **0115 848 5299**.



1 Choose your course

Use this guide to help you decide. You can find more information on our website, so take a look there too. We also recommend attending one of our open days. They will help you get a feel for what it's like to study here.

2 Fill in an application form

You can download an application form from our website or find one at the back of this guide. Remember to show your passion for your chosen subject in your personal statement.

3 Come for an interview

If you meet the criteria for the course, we'll invite you for an interview. We'll send you details of what will happen on the day in advance. Don't panic! Our tutors are really friendly and will help you to do your best.

Get your offer

4 We'll let you know how you got on at the interview. Hopefully we'll be able to offer you a place on the course. This offer might be conditional on your upcoming exam results – for example GCSEs.

5 Accept your offer

You need to tell us that you want to accept your offer of a place by emailing fe.enquiries@ntu.ac.uk or by calling us on **0115 848 5299**.

6 Get your exam results

If you're taking GCSEs, you'll get your results in August. Other exam results will also come out over the summer. Once you've got your results you need to let us know what they are. Then we can confirm your place.

7 Start at Brackenhurst!

We'll send out all the information you need to start with us at the end of August. We hold an enrolment day in the first week of September. This allows you to get your student ID and start meeting your new friends and tutors.

Animal courses

Courses

Level 2
Animal Care

Level 3
Animal Management

Access to Higher Education
Diploma in **Land-based
Studies (Animal Science)**



Love animals? So do we! Our range of animal courses will help you turn your passion into a career.



Your classroom

Study an animal course at Brackenhurst and you'll have access to some fantastic facilities.

Our specially designed Animal Unit is home to over 250 animals from around 70 different species. These include small animals such as rabbits, cats, dogs, reptiles and birds, as well as larger animals like goats and donkeys. All our animal courses include hands-on, practical lessons at the unit. You'll also help our technicians to care for the animals on a day-to-day basis.

As well as your subject-specific facilities, you'll also find:

- a library, including fully equipped computer rooms
- modern classrooms and teaching areas
- laboratories
- our careers and employability service
- a refectory and Costa Coffee
- our student shop.

What can I do when I finish?

Our animal courses have great progression routes to fantastic careers or further study. You can even study one of NTU's degrees right here at Brackenhurst.

Level 2
Animal Care



Level 3
Animal Management

Access to Higher Education
Diploma in **Land-based Studies
(Animal Science)**



FdSc
Animal Science

FdSc
Veterinary Nursing

BSc (Hons)
**Animal Biology / Zoo Biology /
Zoology**



"My top tip for someone considering studying at Brackenhurst is to make sure that you have fun and enjoy yourself."

Felicity Taylor-Peck
Level 2
Animal Care



Animal Care

Level 2 Course

Are you?

- Passionate about animals
- Into practical work and being outdoors
- Interested in looking after the environment
- Reliable and responsible



About the course

This practical, hands-on course will give you the skills to care for a wide range of animals. You'll study the feeding, handling and housing of animals. You'll also learn about protecting the natural environment, wild plants and animals.

Some things you'll study...

Feeding, Accommodating and Moving Animals

Study a range of practical skills for the day-to-day care of animals, including feeding, handling and providing appropriate accommodation.

Practical Animal Health

Develop skills in practical animal health, disease and parasite prevention, cleaning and care, and essential grooming techniques for a range of animal species.

Animal Behaviour Assessment and Safe Handling

Develop the skills to recognise normal and abnormal behaviours in a range of animal species. You'll also learn how to apply safe handling and restraint techniques that minimise stress in animals.

Introduction to Animal Biology and Health

Gain knowledge and understanding of animal biology. Learn how to use this for practical animal health and disease management.

Animal Welfare

Study the approaches to animal welfare, including the five animal needs, health and safety, and animal law.

In addition you will study English and maths and complete relevant work experience. If you do not yet have a GCSE grade 4 / C in maths or English, we'll also support you with extra classes so you can retake the exams.



How you'll study

You'll learn in our fantastic facilities and be taught by tutors who have real-life experience of working within the animal industry. You can expect the course to be split so that you learn through a combination of theory and practical work. You will be taught through lectures, group discussions and practical demonstrations. You'll also get to go on trips to various locations.

The course includes a work placement. This allows you to develop your skills and knowledge in the animal industry, and looks good to future employers. You can work at places like veterinary centres, boarding kennels, catteries, or zoos.

How you'll be assessed

You'll be assessed using a combination of internal assignments and tests, which are set and marked by tutors, and external assessments.

Next steps

If you get a Distinction you'll be able to do the Level 3 courses in Animal Management, or Countryside Management (Wildlife Conservation).

Future jobs within the animal industry include:

- animal carer
- cattery / kennel technician
- wildlife reserve worker
- dog groomer
- farm worker.

You could earn

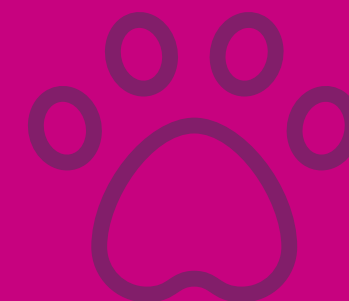
- £21,000 as an Animal Carer Assistant
- £23,000 as a Cattery/Kennel Technician
- £27,500 as a Dog Groomer
- £24,000 as a Wildlife Reserve Worker

One year course

You'll need

- Four GCSEs at grade 3 / D or above, including two from English, maths and science, with at least a grade 2 / E in the remaining subject.
- If you do not yet have a grade 4 / C in English language and / or maths you will need to complete GCSE retakes as part of your study programme.
- A Level 1 Technical qualification or other equivalent qualifications will be considered.

For more information visit www.ntu.ac.uk/course and search Animal Care.



Animal Management

Level 3 Course

Are you?

- Passionate about animals
- Into practical work and being outdoors
- Interested in handling and training animals
- Organised and punctual



About the course

Learn about animal-related subjects, including biology, health, behaviour, nutrition and breeding. You'll also develop practical skills for handling and caring, and gain the knowledge needed to start your career within the animal industry, or for further study.



Some things you'll study...

Animal Health and Disease

This module will teach you to recognise the signs of good and ill health in animals and to carry out health checks on animals and produce animal health plans.

Practical Animal Husbandry

This module will teach you how to handle and care for a wide variety of domestic and companion animals.

Animal Behaviour

Develop knowledge and skills to interpret animal behaviour and understand the factors which influence such behaviour.

Animal Welfare and Ethics

You will learn about the ethics, regulations and legislation associated with animal welfare in animal-related industries.

Zoological Collections

Learn about the role of the modern zoo and the techniques used to improve the lives of zoo animals, including health and safety.

In addition you will study English and maths and complete relevant work experience.

In year two you can follow either our Welfare or Science pathway, allowing you to specialise according to your interests.

How you'll study

You'll learn in our fantastic facilities and be taught by tutors who have real-life experience of working within the animal industry. You can expect the course to be split so that you learn through a combination of practical and theory work.

You'll be taught through lectures, group discussions and practical demonstrations.

You'll also get to go on trips to different locations, including Crufts Dog Show at the National Exhibition Centre, Twycross Zoo and Yorkshire Wildlife Park.

The course includes a work placement. This allows you to develop your skills and knowledge in the animal industry, and looks good to future employers. You can work at places like Cats Protection, Twycross Zoo, RSPCA, Nottinghamshire Wildlife Trust, Stonebridge City Farm and more.

How you'll be assessed

You'll be assessed through written external assignments, practical assessments, and external exams.

Next steps

If you are successful and achieve the right combination of results, you'll be able to progress on to the FdSc Animal Science, FdSc Veterinary Nursing, BSc

(Hons) Animal Biology, BSc (Hons) Zoo Biology or BSc (Hons) Zoology degrees right here at NTU's Brackenhurst Campus.

Future jobs within the animal industry include:

- animal carer
- welfare assistant
- industry sales person
- veterinary nurse
- laboratory assistant.

You could earn

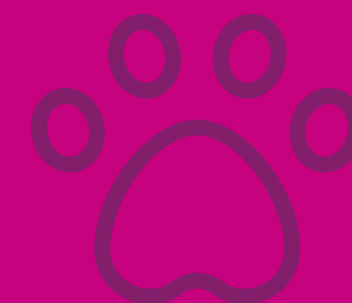
- £21,000 as an Animal Carer Assistant
- £21,000 as a Welfare Assistant
- £28,000 as a Veterinary Nurse
- £26,000 as an Industry Sales Person

Two year course

You'll need

- Four GCSEs at grade 4 / C or above, including English, maths or science.
- If you do not yet have a grade 4 / C in English language or maths you will need to complete GCSE retakes as part of your study programme.
- A Level 2 Technical qualification or other equivalent qualifications will be considered.

For more information visit www.ntu.ac.uk/course and search Animal Management.



Land-based Studies (Animal Science)

Access to Higher Education Diploma

Are you?

- Aged 19 or over without traditional qualifications
- Wanting to progress to study a degree in animal or land-based studies
- Passionate about practical hands-on experience with animals
- Keen to develop your skills for higher education



About the course

This one year course is a chance to learn how to care for, handle and house animals and to develop skills in science, writing and giving presentations. If you would like to study at degree level but haven't got the usual qualifications needed, then this course is the perfect solution.

Some things you'll study...

Higher Education Study Skills

You'll develop your skills in referencing, note-taking and be encouraged to contribute to group discussions. You'll also be able to undertake your own piece of research.

Bioscience

Study how a range of body systems function in animals to ensure their health and allow survival in the wild. You will also look at breeding and genetics.

Animal Science and Welfare

You'll learn how to describe the function of the animal body, its diseases and cures, and how to develop a plan for the handling, housing and training of animals.

Animal Management and Behaviour

Develop an understanding of the housing of healthy and sick animals and examine legal and ethical aspects of animal management.

Land-based Industry Skills

Study the importance of health and safety in the land-based sector. Build your practical skills in a range of animal, wildlife, equine and agriculture environments.

How you'll study

You'll learn in our fantastic facilities and be taught by professional and experienced tutors. You can expect the course to be split so that approximately 30% is practical work and 70% is theory work.



You'll be taught through lectures, group discussions and practical demonstrations. You'll need to commit to 15 hours a week of contact time during the course. You'll also be expected to invest a similar amount of time in your personal study. Teaching will usually take place three days a week.

How you'll be assessed

You'll be assessed through written assignments, presentations, class tests and two internal exams.

Next steps

On successful completion of each unit, you'll gain credits towards your Diploma. If you pass the course, you'll be able to do degree courses in animal and equine science, environmental science, and conservation based right here at NTU's Brackenhurst Campus.

Future jobs within the animal industry include:

- zoo keeper
- ecologist
- industry sales person
- veterinary nurse
- laboratory assistant.

You could earn

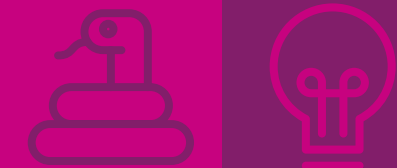
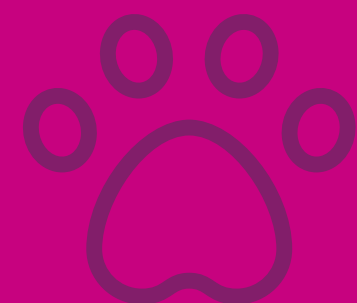
- £21,000 as an Animal Carer Assistant
- £23,500 as a Zoo Keeper
- £23,500 as a Laboratory Assistant
- £28,000 as a Veterinary Nurse

One year course

You'll need

- GCSE maths and English language at grade 4 / C.
- To be aged 19 or over.
- Equivalent qualifications considered.

For more information visit www.ntu.ac.uk/course and search Access to Higher Education.



Agriculture courses

Courses

Level 2
Agriculture

Level 3
Agriculture



If you're interested in a career in farming and looking for a course that will give you unbeatable practical experience, you're in the right place.



Your classroom

Study an agriculture course at Brackenhurst and you'll have access to some fantastic facilities.

Our campus is home to a working farm that grows a mixture of crops including wheat, barley and oilseed rape. We have a herd of award-winning pedigree cattle, as well as a flock of sheep. We also have a range of farm machinery that you'll get to learn with, including two tractors fitted with modern self-steering equipment. Your course includes hands-on, practical lessons at the farm.

As well as your subject-specific facilities, you'll also find:

- a library, including fully equipped computer rooms
- modern classrooms and teaching areas
- laboratories
- our careers and employability service
- a refectory and Costa Coffee
- our student shop.

What can I do when I finish?

Our agriculture courses have great progression routes to fantastic careers or further study. You can even study one of NTU's degrees right here at Brackenhurst.

Level 2
Agriculture



Level 3
Agriculture



BSc (Hons) Agriculture



"The farm at Brackenhurst is good. All the staff are so friendly and good at what they do. They always offer extra help and teaching."

Archie Booth
Level 3 Agriculture



Agriculture

Level 2 Course

Are you?

- Into practical work and being outdoors
- Keen to work in farming
- Interested in technology and machinery
- Able to work as part of a team



About the course

This practical, hands-on course teaches you all about the farming industry. You will learn about livestock, crops and machinery. There are opportunities to do work experience and go on visits to various farms.

Some things you'll study...

Introduction to Working in Land-based Industries

You will learn about key job roles in the farming and land-based industries and the exciting activities these include.

Farming and Agricultural Estate Management

Learn how to carry out inspections, and select, use and maintain tools, equipment and materials to carry out estate tasks safely and efficiently. You'll focus on livestock and crop farming and will learn how to work to a standard expected in the industry.

Introduction to Plant and Soil Science

You'll learn just how amazing plants are and what they need to survive. You will explore the internal and external structures of plants and crops. You will also investigate soil types, texture, structure, pH, nutrients and care.

Livestock Husbandry

Develop the practical skills needed to work with farm animals safely and confidently. This includes learning how to maintain high standards of animal welfare at all times.

Agriculture Work Placement

Gain work experience at a farm or in another agricultural industry business.

In addition you will study English and maths and complete relevant work experience. If you do not yet have a GCSE grade 4 / C in maths or English, we'll also support you with extra classes so you can retake the exams.



How you'll study

You'll learn in our fantastic facilities and be taught by tutors who have real-life experience of working within the agricultural industry.

You will be taught through lectures, group discussions and practical demonstrations. You'll also get to go on trips to different locations, including dairy and crop production farms.

The course includes a work placement. This allows you to develop your skills and knowledge in agriculture by working on a farm or at another business related to the agricultural industry. It also looks great to future employers.

How you'll be assessed

You'll be assessed through written assignments, presentations, practical assessments, class tests and external exams.

Next steps

If you get a Merit or higher, you'll be able to progress on to the Level 3 course in Agriculture here at Brackenhurst.

Future jobs within the agricultural industry include:

- machinery salesperson
- livestock assistant
- tractor driver.

You could earn

- £20,500 as an Apprentice
- £24,000 as a Stockperson
- £25,000 as a Farm Worker
- £28,000 as a Tractor Driver

One year course

You'll need

- Four GCSEs at grade 3 / D or above, including two from English, maths and science, with at least a grade 2 / E in the remaining subject.
- If you do not yet have a grade 4 / C in English language and / or maths you will need to complete GCSE retakes as part of your study programme.
- A Level 1 Technical qualification or other equivalent qualifications will be considered.

For more information visit www.ntu.ac.uk/course and search Agriculture.



Agriculture

Level 3 Course

Are you?

- Looking for a career in the land-based sector
- Interested in the science behind farming
- Keen to learn how to run a successful farming business
- Into practical work and being outdoors



About the course

This course will prepare you to work in the agriculture industry or progress on to higher education. Through both classroom and practical activities, you will learn about livestock, crops and machinery. You'll also engage with the farming community through visits and work experience.

Some things you'll study...

Land-based Machinery Operations

You will learn the practical skills to safely set up and operate a range of agricultural machines.

Managing Agricultural Environments

You'll study the changes in farming practices and their impact on the environment. You will carry out habitat surveys in order to reduce the impact of agriculture on the environment.

Crop Production

You'll learn about a range of crops and how growth is maintained through the production cycle. This will include recognising weeds, pests, diseases and deficiency symptoms, together with what to do about them.

Farm Livestock Husbandry

You'll develop the knowledge and practical skills to plan and manage a range of

conventional livestock species, including cattle, sheep, pigs and poultry, as well as unconventional species, such as alpaca.

Agricultural Enterprise

You'll explore the purpose and objectives of various agricultural activities and carry out evaluations to prepare recommendations for possible improvements.

In addition you will study English and maths and complete relevant work experience. If you do not yet have a GCSE grade 4 / C in maths or English, we'll also support you with extra classes so you can retake the exams.

How you'll study

You'll learn in our industry leading facilities through a mixture of lectures, group discussion, practical demonstrations and hands

on experience with livestock, crops and machinery.

You will also get to go on visits to leading vegetable growers, organic dairy farmers and industry events.

The course includes a work placement. This allows you to develop your skills and knowledge in agriculture by working on a farm, enhancing your chances of employment after you complete your studies.

You can work with local farmers, agronomists, nutritionists or in connected industries and organisations such as the National Farmers Union.

How you'll be assessed

The majority of your assessments will be written work and practical assessments but there are some modules for which the assessment is an external exam.



Two year course

You'll need

- Four GCSEs at grade 4 / C or above, including English, maths or science.
- If you do not yet have a grade 4 / C in English language or maths you will need to complete GCSE retakes as part of your study programme.
- A Level 2 Technical qualification or other equivalent qualifications will be considered.

For more information visit www.ntu.ac.uk/course and search Agriculture.

Next steps

If you are successful and achieve the right combination of results, you'll be able to go straight into employment, or progress on to our BSc (Hons) Agriculture degree right here at NTU's Brackenhurst Campus.

Future jobs within the agricultural industry include:

- livestock manager
- feed company representative
- agronomist.

You could earn

- £30,000 as a Machinery Salesperson
- £43,000 as a Dairy Herd Manager
- £45,500 as an Agronomist
- £55,000 as a Senior Tractor Driver



Equine courses

Courses

Level 3 Equine Management



If you've got a passion for horses and you'd like a career working with them, we've got the course for you.



Your classroom

Study an equine course at Brackenhurst and you'll have access to some fantastic facilities.

Our British Horse Society (BHS)-approved Equestrian Centre has stabling for 65 horses. There is even the option to keep your own horse here. It also features indoor and outdoor riding arenas, turnout fields, a horse walker and a mechanical horse simulator – great for perfecting your position.

You'll use the Equestrian Centre throughout your studies. Your course will include both riding and stable management sessions at the centre. You'll also help our technicians to care for the horses on a day-to-day basis.

As well as your subject-specific facilities, you'll also find:

- a library, including fully equipped computer rooms
- modern classrooms and teaching areas
- laboratories
- our careers and employability service
- a refectory and Costa Coffee
- our student shop.

What can I do when I finish?

Our courses have great progression routes to fantastic careers or further study. You can even study one of NTU's degrees right here at Brackenhurst.

Level 3
Equine Management



BSc (Hons) Equine
Sports Science

BSc (Hons) Equine
Behaviour, Health and
Welfare



"When I visited Brackenhurst Campus on my Open Day, one of the first things that caught my eye were the amazing facilities and beautiful surroundings."

Eleanor Evans
Level 3
Equine Management



Equine Management

Level 3 Course

Are you?

- Passionate about horses
- Into practical work and being outdoors
- Keen to improve your knowledge of working with horses
- Dedicated to horse welfare and care



About the course

This course includes horse science, stable management and riding. It will provide you with the knowledge required for a career in the equine industry. You'll work on the yard to develop a range of skills while studying towards the British Horse Society (BHS) examinations.

Some things you'll study...

Riding Horses on the Flat

You will ride a wide variety of horses of all ages and levels and be encouraged to engage with the theory of training horses to enhance their abilities.

Horse Behaviour and Welfare

Gain an understanding of horse behaviour, the effects of domestication and welfare. You'll observe horses and record the results to analyse the findings.

Principles of Competition Grooming

Develop the skills and knowledge to be able to prepare a horse for competition. Learn about the necessary equipment and the importance of aftercare including exercise, transport, tack and clothing.

Working and Training Horses from the Ground

You'll investigate a range of techniques, including Parelli,

Join Up, lungeing, long reining and loose schooling.

Introduction to Equestrian Coaching

This module focuses on developing your teaching skills with practical and theory sessions. You'll learn how to deliver riding lessons on the flat and over ground poles, plus lead rein and lunge lessons. You'll also look at how to deliver a short lecture.

In addition you'll study English and maths and complete relevant work experience. If you do not yet have a GCSE grade 4 / C in maths or English, we'll also support you with extra classes so you can retake the exams.

How you'll study

You'll learn through practical demonstrations, group discussions, and lectures in our fantastic facilities. You'll be taught by tutors who work within the horse industry as competitors, judges and British Horse Society (BHS) assessors.



You'll go on trips to competition yards, rehabilitation centres and British Eventing competitions. You'll hear from guest speakers from the equine industry.

You can also take the BHS Challenge Awards and the Ride Safe exam in Year One. In Year Two, you can work towards BHS Stage 2 or higher.

The course is split so that approximately 40% is practical work and 60% is theory work. It also includes a work placement. This will develop your skills and knowledge and look good to future employers. You can work at places like local competition yards, yards specialising in natural horsemanship, or in tack shops or feed merchants.

How you'll be assessed

You'll be assessed through written assignments, presentations, practical assessments, class tests and external exams.

Next steps

If you are successful and achieve the right combination of results, you'll be able to progress on to the BSc (Hons) Equine Sports Science or BSc (Hons) Equine Behaviour, Health and Welfare degrees right here at NTU's Brackenhurst Campus.

Future jobs within the equine industry include:

- competition or stud groom
- equine retail worker
- veterinary equine nurse
- riding instructor or coach
- yard manager.

You could earn

- £19,500 as a Competition or Stud Groom
- £21,000 as an Equine Retail Worker
- £24,500 as a Riding Instructor
- £28,000 as a Yard Manager

Two year course

You'll need

- Four GCSEs at grade 4 / C or above, including English, maths or science.
- If you do not yet have a grade 4 / C in English language or maths you will need to complete GCSE retakes as part of your study programme.
- A Level 2 Technical qualification or other equivalent qualifications will be considered.
- If you are invited to interview, you will be required to submit video footage of your riding skills.

For more information visit www.ntu.ac.uk/course and search Equine Management



Conservation courses

Courses

Level 3
Countryside Management
(Wildlife Conservation)



If you're passionate about conserving our planet's precious wildlife, we've got the course that will turn your passion into a career.



Your classroom

Study a conservation course at Brackenhurst and you'll have access to some fantastic facilities.

Our rural campus is made up of grassland, hedgerows, woodlands and ponds. It also includes a working farm. It is home to a wide range of wildlife species that you will observe, handle and study. You'll use the campus and its habitats for hands-on, practical lessons during your course.

As well as your subject-specific facilities, you'll also find:

- a library, including fully equipped computer rooms
- modern classrooms and teaching areas
- laboratories
- our careers and employability service
- a refectory and Costa Coffee
- our student shop.

What can I do when I finish?

Our conservation courses have great progression routes to fantastic careers or further study. You can even study one of NTU's degrees right here at Brackenhurst.

Level 3
Countryside Management
(Wildlife Conservation)



FdSc **Wildlife Conservation**
BSc (Hons) **Wildlife Conservation**
BSc (Hons) **Ecology and Conservation**



"For my course work placement, I continued with a volunteer placement I already had which was volunteering with the RSPB, which is always the highlight of my week, I love it so much."

Indy Kiemel Greene
Level 3
Countryside Management



Countryside Management (Wildlife Conservation)

Level 3 Course

Are you?

- Interested in managing wildlife and habitats
- Passionate about conservation and the environment
- Into working outside
- Able to work as part of a team

About the course

This course will develop your knowledge of wildlife conservation and the environment. You'll also study different wildlife habitats and take part in classroom activities to learn about how to protect and save rare wildlife.

Some things you'll study...

Wildlife Ecology and Conservation

This unit explores ecosystems, plants and animals and how these have changed through time. You'll take part in wildlife and habitat surveys, as well as wildlife rehabilitation, to learn about conservation management.

Woodland Management

You'll explore the history and theory of woodland habitat management and how to manage these habitats, both on campus and with local charities.

Plant and Soil Science

Gain an understanding of the theory of soil and plant science and how these relate to protecting habitats and wildlife.

Coastal Habitat Management

Develop the skills to investigate coastal habitats, the threats these habitats face and solutions for their future management.

Land-based Machinery and Estate Skills

Gain practical industry skills to manage countryside environments.

In addition you will study English and maths and complete relevant work experience. If you do not yet have a GCSE grade 4 / C in maths or English, we'll also support you with extra classes so you can retake the exams.

How you'll study

You'll learn in our fantastic facilities and be taught by tutors who have real-life experience of working within wildlife and conservation. You can expect the course to be split so that approximately 40% is practical work and 60% is theory work.

You will be taught through lectures, group discussions and practical demonstrations. You'll also get to go on trips to different locations, including nature reserves, farms, estates and rehabilitation centres.



The course includes a work placement. This allows you to develop your skills and knowledge in ecology, the environment and wildlife conservation, and looks good to future employers. You'll get to take part in volunteering projects at local conservation organisations, including The Wildlife Trusts, private environmental consultants, and environmental and countryside management organisations.

How you'll be assessed

You'll be assessed through written assignments, presentations, practical assessments, class tests and external exams.

Next steps

If you are successful and achieve the right combination of results, you'll be able to progress on to the FdSc Wildlife Conservation, BSc (Hons) Wildlife Conservation or BSc (Hons) Ecology and

Conservation degrees right here at NTU's Brackenhurst Campus.

Future jobs within the wildlife conservation, countryside management and environment industry include:

- marine conservationist
- countryside / game ranger
- ecological assistant
- nature conservation officer
- wildlife rehabilitator.

You could earn

- £24,000 as a Researcher
- £25,000 as a Nature Conservation Officer
- £28,000 as a Countryside or Game Ranger
- £29,000 as an Ecological Assistant

Two year course

You'll need

- Four GCSEs at grade 4 / C or above, including English, maths or science.
- If you do not yet have a grade 4 / C in English language or maths you will need to complete GCSE retakes as part of your study programme.
- A Level 2 Technical qualification or other equivalent qualifications will be considered.

For more information visit www.ntu.ac.uk/course and search Countryside Management.



Student support



As a student at Brackenhurst, you'll get lots of support. From when you apply, to up to three years after you complete your course, our teams are here to help you.

Learning support

We work hard to provide an inclusive learning environment. If you've got a physical or sensory disability, specific learning difficulty, an autism spectrum condition or long-term health condition we encourage you to tell us when you apply. This information helps us provide you with advice and support so you'll enjoy learning at Brackenhurst.

Library services

The library at Brackenhurst will play a big part in your studies. It's open seven days a week during term-time. Our friendly library team are here to make sure you can make the most of the books and resources available.

Fees and funding

If you are aged 16 – 18 and applying for a Level 2 or 3 course

There are no course fees if you're aged under 19 on 31 August of the year you start your course.

If you are aged 19+ and applying for a Level 2, Level 3 or Access to Higher Education course

If you're studying your first full Level 3 or Access to Higher Education qualification you may be eligible for free tuition.

If you are applying for the Level 2 qualification or have already completed a full Level 3 qualification, tuition fees will apply.

To cover the cost of tuition when applying for a Level 3 and Access to Higher Education qualification, you can apply for an Advanced Learner Loan from the UK Government. It is easy to apply, your household income is not taken into account and there is no credit check. You will not have to pay anything back until your income is over £25,000.

Additional financial assistance

We have a bursary fund (which does not need to be repaid) to help with costs relating to your study. This includes things like books, clothing, equipment and travel.

To be eligible, there are some conditions that you, or your parents / guardians must meet. Funds are limited and will be awarded to those in greatest financial need.



Employability services

Our dedicated Employability team are here to help you with anything job or career-related. You can get advice on career plans, CV-writing and preparing job or university applications. Their support doesn't stop when you leave either. You can access our employability services for up to three years after you complete your course.



For further information on support, fees or funding email fe.enquiries@ntu.ac.uk or call us on 0115 848 5299.



Getting to Brackenhurst

Brackenhurst is easy to get to. We're just 14 miles from Nottingham city centre, next to the town of Southwell.

Bus routes

The NCT Pathfinder 26 bus service runs regularly from Nottingham city centre and stops right outside the campus. The journey takes about 45 minutes. There is a charge to use this bus service.

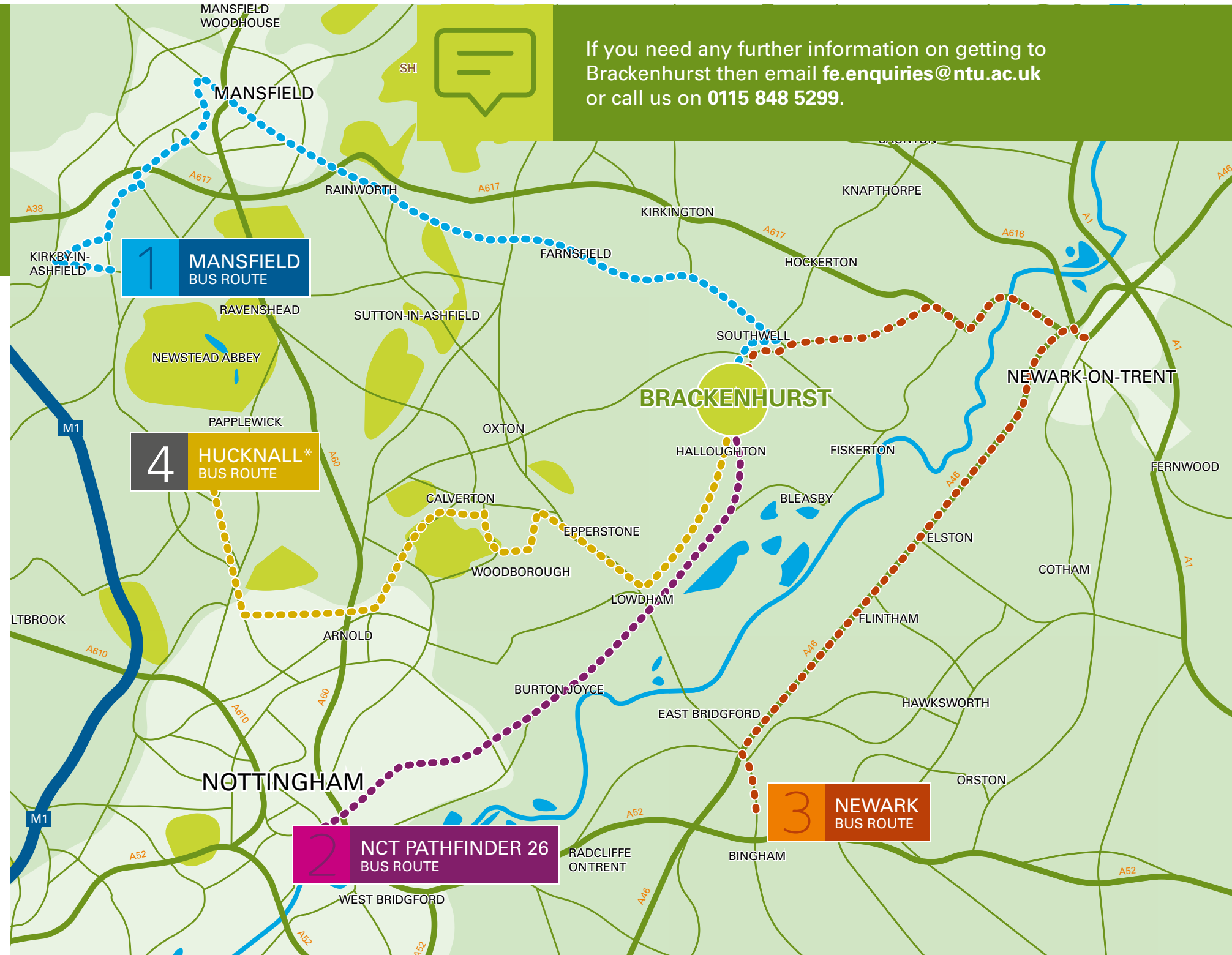
We also offer additional bus services from locations including Mansfield, Hucknall* and Newark. These bus services are fully subsidised.

Driving

If you're driving to Brackenhurst, there is free parking available.

* New transport route proposed. Exact stops are dependent on numbers of students interested. Route is subject to slight deviation.

If you need any further information on getting to Brackenhurst then email fe.enquiries@ntu.ac.uk or call us on **0115 848 5299**.



Application form

When you've finished, email this form to:
fe.enquiries@ntu.ac.uk



Alternatively you can send
your form via post:

Further Education Admissions Team
School of Animal, Rural and Environmental
Sciences
Nottingham Trent University
Brackenhurst
FREEPOST KN11
Southwell
Nottinghamshire, NG25 0BR

It's a Freepost address, so you
don't need a stamp!



PLEASE USE BLOCK CAPITALS

The course you want to study:

The year you want to start:

SECTION 1 – YOUR DETAILS

Surname (Mr / Mrs / Miss / Ms):

Forename(s):

Home / Permanent address:

Postcode:

Correspondence address (if this is the same as your home / permanent address, write "same"):

Postcode:

Tel. no. (include code):

Email:

Mobile:

Date of birth:

Age in September 2024:

Gender identity: Male ☐ Female ☐ Other ☐ Prefer not to say ☐

Do you have any criminal convictions? Yes ☐ No ☐

What is your country of permanent / home residence:

SECTION 2 – WHO CAN WE CONTACT IN AN EMERGENCY?

IF UNDER 18, PLEASE GIVE:

Name of parent(s) / guardian / next of kin:

Relationship to you:

Address (if same as your home address, just write "same"):

Postcode:

Tel. no. (include code):

Emergency email address:

SECTION 3 – YOUR ACADEMIC DETAILS

What school / college are you attending, or what was the school / college where you have previously taken your qualifications?

Name and address	Date from	Date to

Please tell us about your qualifications. If you haven't received your results yet, or are still taking your qualifications, please enter your predicted grades.

[illegible]

(Continue on a separate sheet if necessary)

SECTION 4 – WORK EXPERIENCE

Employers

Name and address of your employer, and their job title	Date from	Date to	What did you do there?

References

Please supply the name and address of TWO referees. Ideally, they'll be from your last school / college, and your most recent employer. Unfortunately, we can't accept members of your family as referees.

Name:	Status:
Address:	Email address:
Postcode:	Tel. no:
Name:	Status:
Address:	Email address:
Postcode:	Tel. no:

SECTION 5 – YOUR MEDICAL DETAILS

If you have a disability or current illness that you feel you'll require support with, please let us know - we will try to meet your needs wherever possible to make sure that you get the care and attention you need. The information that you give here will help us do this. Anything you tell us is confidential, but if you're not comfortable including it here, you can attach a separate envelope marked 'MEDICAL - CONFIDENTIAL' to your application.

Do you have a disability?

Yes ☐

No ☐

If yes, are you:

Registered ☐

Non-registered? ☐

Registered Disabled Person's Number (if applicable):

SECTION 6 – ADDITIONAL SUPPORT

Nottingham Trent University is fully committed to the implementation of a policy to achieve equal opportunities for all students and is striving to further develop its provision for students with disabilities. In order that we can provide appropriate support for students from the start of their programme, it is important that any additional needs are outlined at the time of application. Tick the relevant box(es) below, and tell us what we can do to support your studies.

- ☐ You do not have a disability, nor are you aware of any additional support requirements
- ☐ You have dyslexia
- ☐ You are blind or visually impaired
- ☐ You are deaf or hearing impaired
- ☐ You are a wheelchair user or have mobility difficulties
- ☐ You need personal care support
- ☐ You have mental health difficulties
- ☐ You have an unseen disability, e.g. diabetes, epilepsy
- ☐ You have more than one of the above disabilities
- ☐ You have a disability not listed above
- ☐ You need an education, health and care plan

Do you hold a medical diagnosis which supports your need for additional support? Yes ☐ No ☐

If you have ticked any box indicating a support need, please provide further details and evidence (e.g. medical certificates, reports, SENCO assessments) where possible:

SECTION 7 – PERSONAL STATEMENT

Please use the space below to tell us something about yourself, e.g. what type of career you are aiming for, why you want to study this course, your hobbies and other interests (continue on a separate page if necessary).

SECTION 8 – RECRUITMENT AND SELECTION MONITORING

We're committed to providing an equal opportunity learning experience for our students, and we need your help to achieve that. Please select from the list below the category that most closely describes your ethnic origin.

Black	Black/Asian	White	Mixed
<input type="checkbox"/> Caribbean	<input type="checkbox"/> Indian	<input type="checkbox"/> British	<input type="checkbox"/> White and black Caribbean
<input type="checkbox"/> African	<input type="checkbox"/> Pakistani	<input type="checkbox"/> Other European (incl. Irish)	<input type="checkbox"/> White and black African
<input type="checkbox"/> Other black background	<input type="checkbox"/> Bangladeshi	<input type="checkbox"/> Other white background	<input type="checkbox"/> White and Asian
	<input type="checkbox"/> Chinese		<input type="checkbox"/> Other mixed background
	<input type="checkbox"/> Other Asian background		<input type="checkbox"/> Other ethnic background
<input type="checkbox"/> Prefer not to say			

SECTION 9 – DECLARATION

I can confirm that the information provided in my application is true, complete and accurate and that no requested information or other material has been omitted. If accepted, I agree to comply with the rules and regulations of Nottingham Trent University and to pay the required fees.

Signature:	Date:
------------	-------

To be countersigned by a parent / guardian if under 18 years of age

Signature:	Date:
------------	-------

Relationship:

General Data Protection Regulation 2016 and Data Protection Act 2018

By submitting this application form you are consenting to Nottingham Trent University using the information you have provided to enable your application for entry to be considered. Please see our Admissions Privacy Notice which sets out how we use your personal data.

Terms and Conditions

Should you accept an offer to study at the University, you will be agreeing to the Terms and Conditions which includes the Student Privacy Notice.

The Admissions Policy forms part of the University Academic Standards and Quality Handbook.

Equal Opportunities Mission Statement

Nottingham Trent University is committed to supporting, developing and promoting equality and diversity in all of its practices and aims to establish an inclusive culture, free from discrimination and based on the values of dignity and respect.

The University consequently seeks to build capability across the institution in the development of this inclusive culture and resolution of obstacles to equality.

To achieve this, the University will, in carrying out its activities, have due regard to:

- the promotion of equality of opportunity
- the promotion of good relations between different groups
- the elimination of unlawful discrimination.

All staff, students and visitors will be informed of the equal opportunities policy, and its operation will be subject to regular monitoring and review.

Important note

The University will make all reasonable endeavours to deliver the course of study in accordance with the description applied to it in the University's literature online and in print, for the academic year in which you begin the course. However the University shall be entitled to:

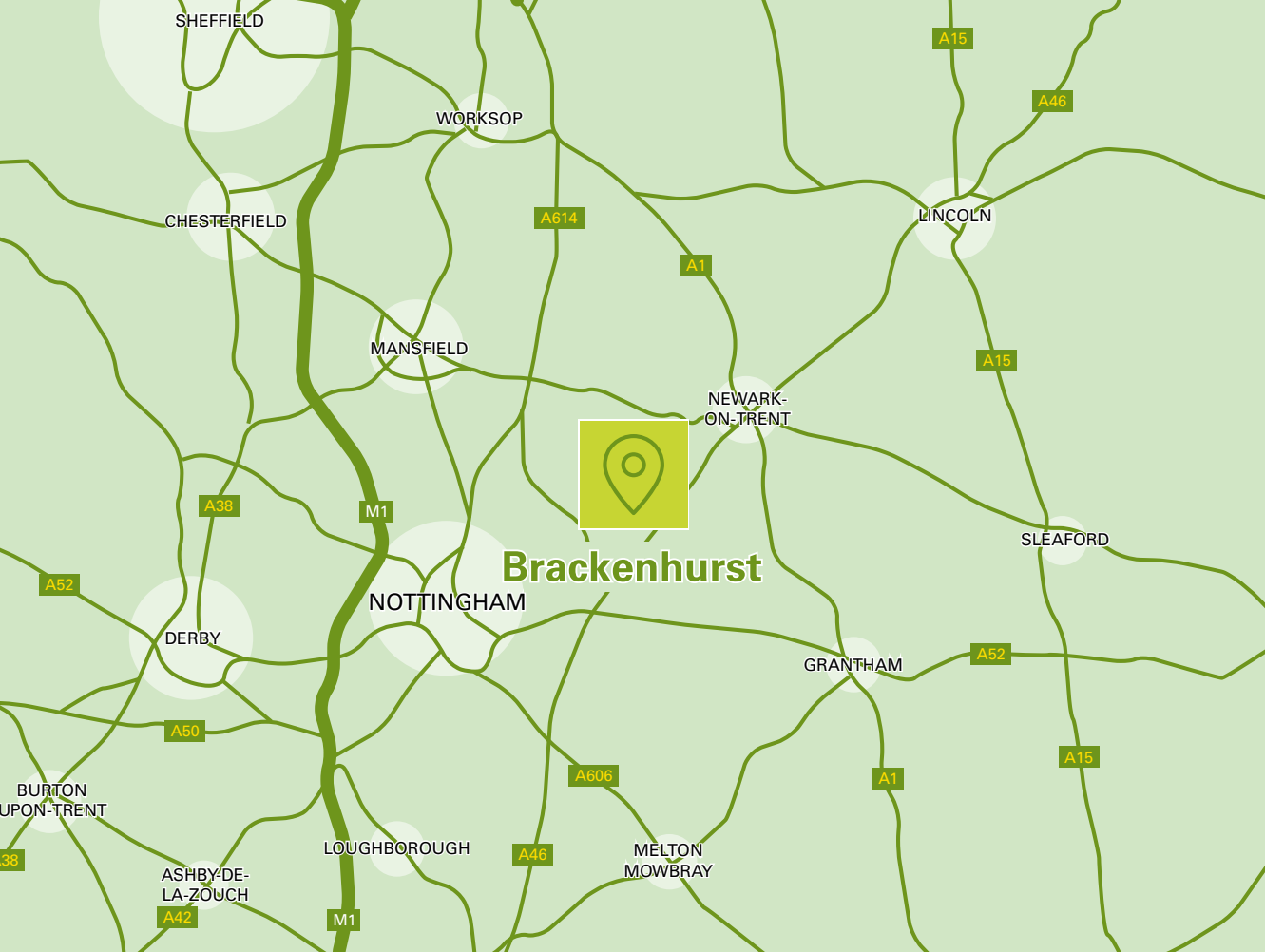
- make reasonable variations to the content and syllabus of the course
- discontinue the course or decide not to provide the course or to merge or combine the course with other courses of study, if such action is reasonably considered to be necessary by the University in the context of its wider purposes.

In addition, the University shall not be liable for any failure to provide the course and any other services if it is unable to do so by reason of any matter beyond its control.

"The tutors are very supportive and will always try their best to help you."

Jan Urbaniak
Level 3
Equine Management





Contact us

fe.enquiries@ntu.ac.uk

0115 848 5299

www.ntu.ac.uk/brack

Find us

Nottingham Trent
University
Brackenhurst
Southwell
Nottinghamshire
NG25 0QF



Nottingham Trent
University

This information can be made available in alternative formats.

Please note that whilst the University has taken all reasonable steps to ensure the accuracy of the content within this brochure at the time of printing, the University reserves the right to remove, vary or amend the content of the brochure at any time. For avoidance of doubt, the information provided within the content of this brochure is for guidance purposes. Please note that unit content and availability is subject to change.

© Nottingham Trent University and may not be reproduced or transmitted in any form in whole or in part without the prior written consent of Nottingham Trent University.