


Annual Sustainability Report 2018–19

Enabling a culture of Sustainable Development across NTU, enhancing the student and staff experience and creating a global legacy.

A photograph of three young adults walking through a field of tall, green grass. On the left, a young man in a grey t-shirt and dark trousers is looking towards the right. In the center, a young woman with blonde hair, wearing a white t-shirt with a 'Hard Rock CAFE' logo and a black jacket, is looking forward. On the right, another young woman with long dark hair, wearing a black long-sleeved top and blue jeans, is also looking forward. The background shows a line of trees under a bright blue sky with scattered white clouds. The foreground grass is out of focus, creating a bokeh effect.

The big challenges that our world faces are complex. We are working to solve them by sharing our ideas, expertise and technology across the University and with our partners.

As one of the UK's largest Universities, with 30,216 students and 3,956 members of staff, Nottingham Trent University (NTU) acknowledges its activities will significantly impact the environment at both local and global levels. As a responsible institution, covering 4 campuses, we promote environmental and sustainability awareness and education, in accordance with our strategic plan. Disseminated by the University Executive Team, these build on current policies seeking to engage all staff and students, inspiring and embedding environmental principles for the future of NTU and for life.

One of NTU's five key research themes is 'Sustainable Futures' and sixteen research groups have a sustainability focus. This recognises that the resources on earth are finite, but global population and levels of consumption keep growing. To prepare for the future, we must adapt the ways in which we design, make and use products, generate and use energy, and grow food. Research at NTU explores the challenges of creating a world in which resources are used wisely, climate change mitigated through low carbon strategies, circular economy strategies prevent waste and pollution is minimised.

“As a responsible institution, covering 4 campuses, we promote environmental and sustainability awareness and education, in accordance with our strategic plan.”

Sustainable Development

While the work of the University's research teams are at the forefront of discovering pioneering approaches to sustainable development and NTU academics continue to embed the Sustainable Development Goals (SDGs) into curriculum with support from the NTU Green Academy, we also believe in leading by example through our estate and operations. We are proud of our world-class campuses complete with green spaces, sustainable buildings and transport infrastructure.

The United Nation's (UN) 17 SDGs influence the NTU's strategy and the University is a signatory to the SDG Accord. As well as inspiring and celebrating the University's role in embedding the goals in all aspects of its work, it is also a commitment to share what NTU learns with other institutions annually, and to report on progress made.

The Sustainable Development Team and Green Academy work in partnership with other departments to continue to embed sustainability into everyday life at NTU.

This Annual Report sets out how NTU has worked towards fulfilling the UN's SDGs across our operations in the academic year 2018-19.



Awards

In working towards meeting the aims of each theme the University is continuing to implement sustainable solutions at local and community levels supporting the global effort to meet the SDGs by 2030.

We have held the internationally recognised ISO 14001 Environmental Management System and EcoCampus Platinum since 2012.

The following projects and achievements reflect our vision and capability in leading change for sustainable development.

Awarded 3rd place in the 2019 People and Planet University League.



NTU ranked 5th in the UI Green Metric World University Ranking in 2019.



NTU won the 2019 Green Gown Award for Outstanding Leadership Team of the Year.



Proud Client Partners of the Considerate Constructors Scheme.



Awarded the British Heart Foundation's Heart Hero Award for the Pack for Good campaign.



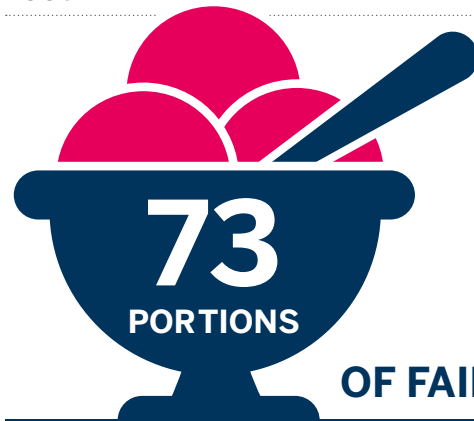
Catering



We are proud to offer a comprehensive range of seasonal, local and ethically sourced meals across our main catering outlets.

How are we doing?

Food



SERVED BY CATERING OUTLETS OVER THE FAIRTRADE FORTNIGHT PERIOD.

Silver Food for Life award for sustainable sourcing of ingredients in NTU catering:
19% local, 67% UK sourced and 12.7% organic.

£128,061 spent on Fairtrade products at NTU this year.



**VEGETARIAN
AND VEGAN
MEALS SERVED**
SERVED DURING GREEN WEEK





Waste



Across NTU's estate you will see recycling bins encouraging everyone to recycle their waste. We are always aiming to improve our recycling rates by asking our staff, students, and visitors to follow the waste hierarchy.

How are we doing?

Waste

99% of all waste is diverted away from landfill and **37%** is sorted on site.

Bin signage pilot was launched at Boots Library and Dine Arkwright to improve recycling.

Launch of furniture and equipment re-use through WARPit, resulting in the re-use of **96 items**, diverting **3,702kg** from landfill, and saving **8,871kg** of greenhouse gas emissions.

Plastic Planet campaign eliminated **116,000 plastic cups**, **169,000 items** of plastic cutlery, and **18,000 plastic straws** across NTU catering outlets in 2018/19.

16,738

BAGS OF CLOTHES DONATED TO THE

BRITISH HEART FOUNDATION
DURING 2018-19
RAISING £234,332,
DIVERTING 134 TONNES OF ITEMS
FROM LANDFILL AND SAVING
1,362 TONNES
OF GREENHOUSE GAS EMISSIONS

Carbon and Energy



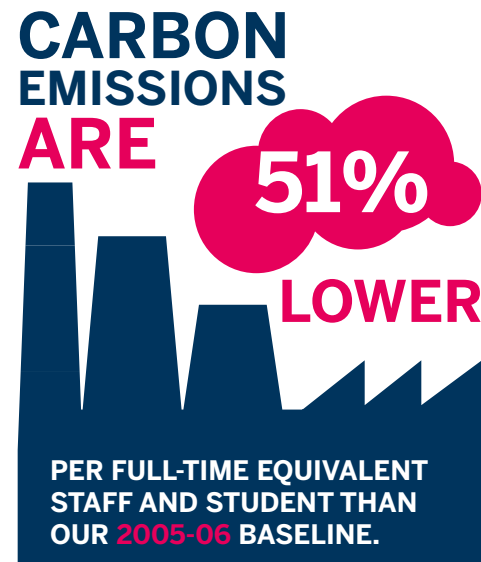
Reducing energy consumption and carbon emissions is vital for any sustainable business or institution.

How are we doing?

We are supporting local businesses to reduce their carbon footprint using student expertise.

Our research centre CIE-MAP helps the industry to reduce carbon emissions.

Solar PV installations at all 4 campuses can now generate a total capacity of **396kW**.



“The University has committed to reducing its carbon footprint by 29% on CO₂e per FTE staff and student by the end of 2021.”

CIE-MAP

Centre for Industrial Energy, Materials and Products



Biodiversity



NTU's estate comprises over 240 hectares of land across our 4 campuses. These different land types are valuable assets to the University, community and natural world. We are working hard towards conserving the biodiversity found on and around these spaces.

How are we doing?

**3,000
ADDITIONAL
TREES WERE
PLANTED AT
BRACKENHURST**

Finding better ways to **farm and conserve nature together** at Brackenhurst through the Carbon Woodland planting scheme.

Brackenhurst Campus is home to 4 pond habitats, 3 woodlands and a management plan for our hedgerows.

280,000 viewers watched the Peregrine Falcons in 2018-19.

Our **Greening the City initiative** is transforming areas from grey to green space and has led to the creation of 3 new pocket parks and 4 green roofs.

2 Green Flag Awards held for the last 6 years highlighting quality green spaces at our Clifton and Brackenhurst campuses.

IN 2018-19 BRINGING THE TOTAL NUMBER OF TREES PLANTED AT BRACKENHURST TO **11,000**



Sustainable Construction



NTU's estate is rapidly developing and changing in order to provide the best possible facilities for our students and staff. Our policy is to ensure that every new construction project is rated at least BREEAM Excellent in order to display best-practice in sustainable construction.

How are we doing?



“Meeting the highest standards in terms of sustainability, our award-winning campuses feature buildings at the cutting-edge of technology.”



Travel



NTU is committed to providing and influencing the development of responsible transport solutions as part of our corporate, strategic and local plans.

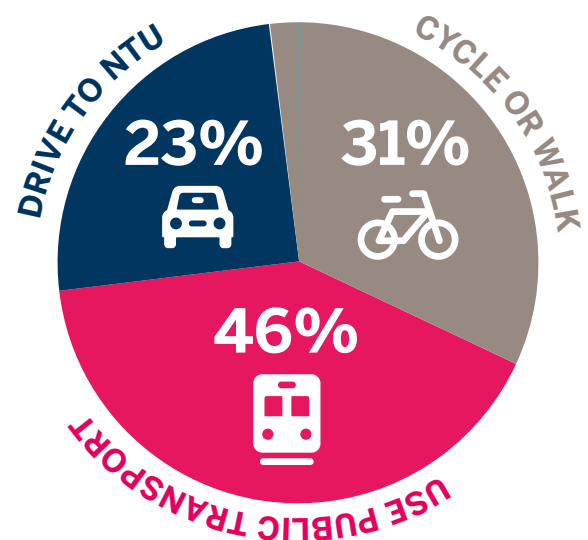
How are we doing?

338 cycle parking spaces at City Campus and over **500** spaces at Clifton Campus.

Go2Uni4 bus service from City to Clifton Campus has a new fleet of vehicles with Euro VI engines resulting in reduction in carbon emissions. 2018/19 saw **842,000 passengers** on the Go2Uni4 bus route.

Pathfinder 26 bus service from City to Brackenhurst Campus has a new timetable and new fleet of vehicles with Euro VI engines resulting in reduction in carbon emissions.

PROMOTING SUSTAINABLE TRAVEL TO THE UNIVERSITY



150 BIKES AVAILABLE FOR STUDENTS AND STAFF TO HIRE



Engagement and Education

Integrating social, environmental and economic themes in learning and teaching is a strategic priority as shown in our strategic plan. Armed with the right knowledge and skills, NTU graduates are capable of contributing to a brighter future. NTU is committed to sending students out into the world as global citizens, building links between sustainability, literacy and employability.

The NTU Green Academy provides expertise in Education for Sustainable Development (ESD) and the SDGs through bespoke educational development consultancy for academic schools, course teams, module teams and individual academics. NTU Green Academy and NTU's Sustainable Development team also work collaboratively to offer a range of engagement opportunities and curricular challenges that utilise the NTU estate and operations as a living lab.

How are we doing?



AND SOCIAL ENTERPRISE IDEAS
AT THE ENTERPRISE WEEK
DRAGON'S DEN EVENT



Launch of **Green Rewards** resulting in **21,000** positive sustainability and wellbeing actions taken by staff and students and a total carbon emissions savings of **19,000 kg**.

In 2018-19, **1191 students** and members of staff completed the Sustainability in Practice Certificate.

277 students participated in 19 SiP Challenge Days. To see full progress of sustainability in the curriculum at NTU please refer to the NTU Green Academy 2019 Annual Report.

Sustainability was embedded in **354** out of **354 courses** during the 2018-19 academic years.

Over **£2 million of research funding** dedicated to sustainability research at NTU.

Green Academy is leading the sector in Education for Sustainable Development and accredited in **Responsible Futures**.

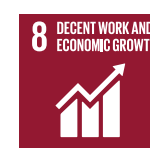
The Sustainable Development Academic Forum brings together staff from different Schools and Departments.



Global Legacy

NTU plays a leading role in the social, cultural, economic and environmental development of Nottingham, East Midlands and the United Kingdom. The Sustainable Development Team shares our expertise with our community and shows others what best practice in sustainability looks like.

How are we doing?



**FROM DISADVANTAGED
BACKGROUNDS AS PART OF
NTU OUTREACH INTERVENTIONS**

Over **1000 student volunteers**, and **580 staff** contributing over **60,000** and **9,000 hours** respectively, helping local and global communities in 2018-19.

Driving **responsible corporate practice** in Nottingham Business School as PRME Champions.

In total, NTU suppliers completed **709 sustainable actions** on the Supplier Engagement Tool.

**VOLUNTEERS
GROW FRUIT AND
VEGETABLES FOR
DONATION TO
LOCAL CHARITIES**

**AT OUR
FOODSHARE
ALLOTMENT**



Get in touch and get involved.

Website: ntu.ac.uk/sustainability

Email: sust.dev@ntu.ac.uk

Green Academy: green.academy@ntu.ac.uk



@NTUEnvironment



@NTUSustainability



@ntu_sustainability