



Nottingham Trent
University

City Campus

Landscape Management Plan

Date: January 2025

City Campus Landscape Management Plan

Version: 01
Date: 01/01/25

Author: JM

Version: 02
Date: 01/12/25

Author: JM

Contents

- 1. Introduction and Background 4
 - 1.1. Location 5
 - 1.2. Current Use 6
 - 1.3. Recent and Proposed Development..... 6
 - 1.4. Green Spaces 10
 - 1.5. Biodiversity Commitment at NTU 12
- 2. A Welcoming Place 13
 - 2.1. Good and Safe Access 14
 - 2.2. Signage 0
 - 2.3. Equal Access for All 1
- 3. Health, Safety and Security 2
 - 3.1. Appropriate Provision of Quality Facilities and Equipment 3
 - 3.2. Safe Equipment and Facilities 4
 - 3.3. Personal Security 4
 - 3.4. Health and Safety 4
 - 3.5. Accident and Incident Reporting 1
 - 3.6. Dog Fouling 1
 - 3.7. Working Hours 1
- 4. Cleanliness and Maintenance 2
 - 4.1. Litter and Waste Management 3
 - 4.2. Horticultural Maintenance 1
 - 4.3. Tree Maintenance 1
 - 4.4. Building and Infrastructure Maintenance 1
 - 4.5. Equipment Maintenance 1
 - 4.6. Maintenance Planning 2
- 5. Environmental Management 3
 - 5.1. Managing Environmental Impacts 4
 - 5.2. ISO 14001 Environmental Management System 4
 - 5.3. Pesticides and Herbicides 4
 - 5.4. Composting 5
 - 5.5. Travel & Transport 5
 - 5.6. Energy Consumption and Production 6
 - 5.7. Staff Engagement 6
 - 5.8. Climate Change and Adaptation 7
- 6. Biodiversity, Landscape and Heritage 9

City Campus Landscape Management Plan

- 6.1. Management of Natural Features, Wild Fauna, and Flora 9
- 6.2. Biodiversity Baselineing 9
- 6.3. Peregrine Falcons 9
- 6.4. Rewilding Areas 10
- 6.5. Water Conservation 11
- 6.6. Planting Policy 11
- 6.7. Conservation of Landscape Features..... 12
- 6.8. Biodiversity Monitoring 12
- 7. Community Involvement 14
 - 7.1. Community Events 15
 - 7.2. Bonnington Gallery 15
 - 7.3. Hedgehog Friendly Campus (HFC) 15
 - 7.4. Room Hire..... 16
 - 7.5. Sports Facilities..... 16
 - 7.6. Natural Dye Garden 17
 - 7.7. Student Volunteering 17
- 8. Marketing and Communication 20
 - 8.1. Marketing and Promotion 21
 - 8.2. Communication Channels 21
 - 8.3. Educational Information 21
- 9. Management 22
 - 9.1. Management Structure..... 23
 - 9.2. Project Funding..... 23
 - 9.3. Management Priorities 23
- Appendices 24
 - Appendix A – Landscape Operations Service Level Agreement 24
 - Appendix B – Implementation Plan 26
 - Appendix C – Habitat and Species Conservation Management Plan 27
 - Appendix D – City Campus Habitat Map 31



Section 1: Introduction and Background

1. Introduction and Background

1.1. Location

Nottingham Trent University's City Campus covers 12 hectares in the heart of Nottingham. It combines historic buildings repurposed for education with modern facilities and diverse green infrastructure, including hedgerows, urban trees, formal landscaping, amenity grassland, green roofs, and living walls.

The campus is integrated into a busy urban setting, bordered by commercial and residential areas and intersected by public roads such as Shakespeare Street. To the west lies Nottingham General Cemetery, and to the north, The Arboretum Park, both key city-centre green spaces that support biodiversity and provide recreational opportunities for staff and students.

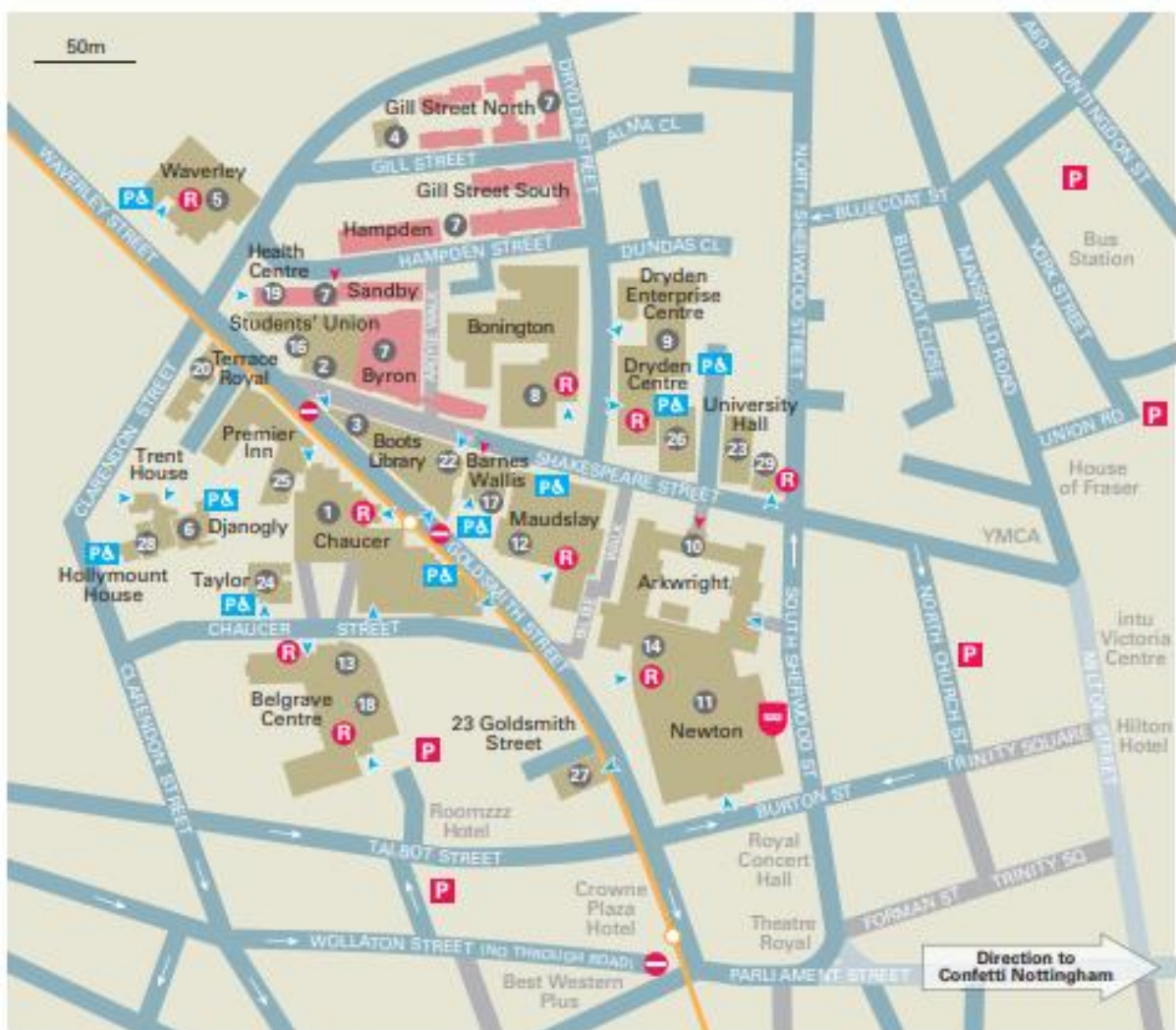


Figure 1 – 2024 Plan of City Campus

1.2. Current Use

City Campus is a dynamic hub featuring modernised buildings, an award-winning Students' Union, and vibrant facilities. It offers diverse teaching and study spaces, alongside restaurants, cafés, and venues for conferences and events. The campus hosts six academic schools, an innovative public art gallery, collaborative offices for local businesses, and the renowned NLS Legal service.



Figure 2 – BBC Election Debate Stage in the Newton Building

Dominating Nottingham's skyline, the iconic Newton Building is just five minutes from Market Square and the Victoria Centre. In 2024, the Newton and Arkwright buildings hosted the final General Election debate between Sir Keir Starmer and Rishi Sunak. Students from the Centre for Broadcasting & Journalism supported the BBC as runners, while student publications provided live coverage, showcasing NTU's role as a civic and cultural leader.

1.3. Recent and Proposed Development

Under Nottingham Trent University's Estates Development and Contractor Control Operational Procedure, all new buildings are assessed and, where applicable, must achieve a BREEAM Excellent rating. Major refurbishment projects are also evaluated for

environmental performance and certified using the RICS SKA Rating. Recent developments have incorporated green roofs, living walls, and sustainable drainage systems, enhancing biodiversity and supporting urban wildlife while contributing to climate resilience.

NTU is a proud Client Partner of the Considerate Constructors Scheme (CCS), actively working to reduce the environmental and social impacts of construction. The partnership promotes excellence in site appearance, community engagement, environmental protection, safety, and workforce wellbeing.

1.3.1. Newton & Arkwright Building

Nottingham Trent University invested £90 million to transform the Grade II* listed Newton and Arkwright buildings at the heart of City Campus. This regeneration preserved their historic character while introducing a contemporary Central Court linking the two structures.



Figure 3 – Arkwright & Newton Buildings

Arkwright (1877–1881) is a Gothic landmark originally housing University College Nottingham, the city library, and a natural history museum. It was once hailed as “the finest pile of public buildings in Nottinghamshire” and inspired D. H. Lawrence’s *The Rainbow*. The building also hosted pioneering research by Professor Frederic Stanley Kipping, whose discovery of silicone polymers shaped a global industry.

Newton (1956–1958) exemplifies mid-20th-century architecture and remains one of Nottingham’s tallest buildings. Opened by HRH Princess Alexandra, its art-deco style makes it a city icon.

The redevelopment balanced heritage with modern functionality, delivering sustainable features such as sedum roofs, smart lifts, and automated blinds to improve energy efficiency. Enhanced accessibility ensures inclusive use of teaching, learning, and social spaces. Achieved in partnership with English Heritage and Bowmer & Kirkland, this project demonstrates NTU’s commitment to heritage, sustainability, and innovation.

1.3.2. Belgrave Post Graduate Centre

Opened in March 2024, the refurbished Belgrave Building provides 4,700 m² of state-of-the-art postgraduate facilities in Nottingham city centre. Spread across three floors, it offers flexible teaching spaces, dedicated study areas, bookable meeting rooms, and a tiered lecture theatre. The centre also houses employability services, student support, and a vibrant café, creating a collaborative learning environment. A newly designed outdoor space enhances well-being and supports local biodiversity. This versatile area serves as an event venue, blending natural elements with functionality to enrich the experience for students and visitors.



Figure 4 – Belgrave Centre

1.3.2. Design and Digital Arts Building

The new Design and Digital Arts Building, home to Nottingham School of Art & Design, provides cutting-edge facilities to prepare graduates for careers in the cultural and creative industries. Equipped with advanced technologies and flexible workspaces, it supports disciplines including graphic design, illustration, motion graphics, UX design, filmmaking, television production, animation, games design, and visual effects. These resources foster creativity and collaboration, enabling students to develop professional and technical skills for success in diverse sectors.

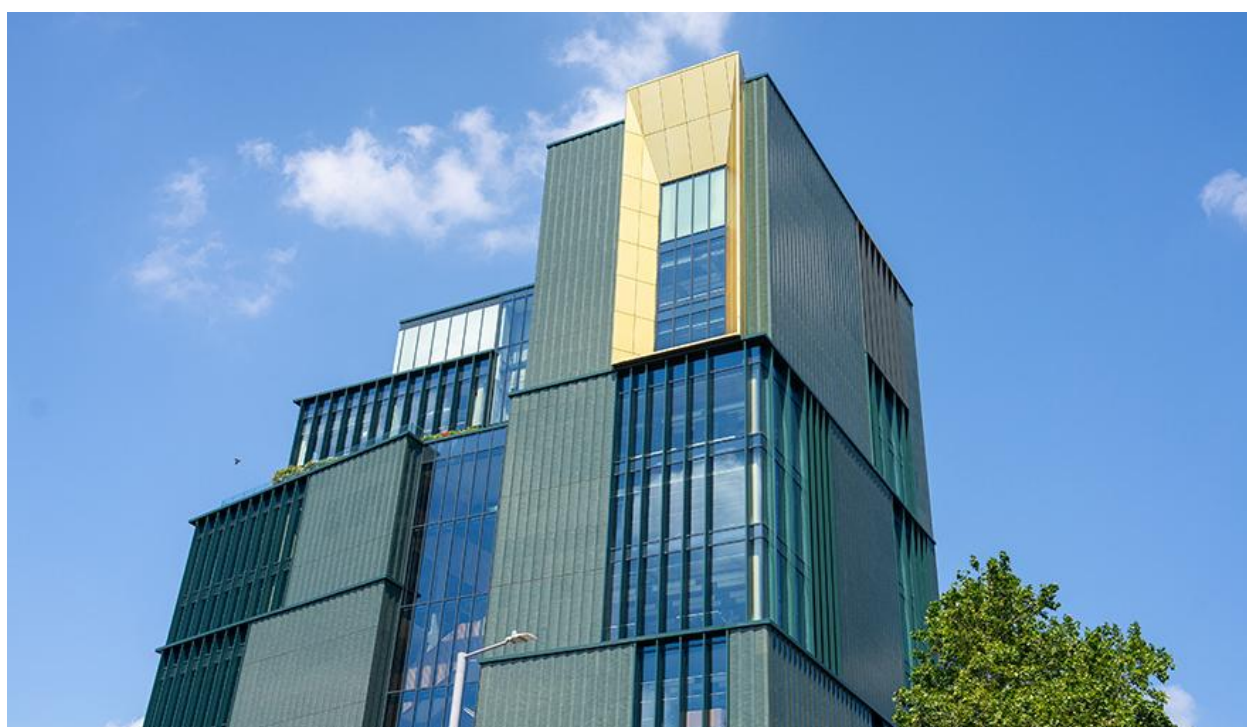


Figure 5 – Design and Digital Arts Building

The development also incorporates a 75 m² Green Wall, creating a vibrant botanical backdrop to the roof terrace. Facing west and south for optimal sunlight, the living facades feature seasonal flowering plants to attract pollinators. The design uses two planting matrices suited to different exposures, with the south elevation showcasing species such as Bellflower, Erysimum ‘Bowles Mauve’, Bergenia, and Heuchera. This feature enhances biodiversity, visual appeal, and well-being while contributing to the campus’s green infrastructure.



Figure 6 – Design and Digital Arts Building Green Wall

1.4. Green Spaces

1.4.1. Boots Roof Garden

Boots Roof Garden provides a tranquil space for students and staff to relax, study, and socialise. Accessible via the top floor of Boots Library, it offers Wi-Fi, seating, and sheltered areas for year-round use.

Created in collaboration with horticulture students from Brackenhurst Campus, the garden features planting schemes designed to attract wildlife and enhance biodiversity. A volunteer group, led by library staff, supports ongoing maintenance and engagement opportunities for the university community. As a green roof, it improves building efficiency, reduces flood risk, and uses recycled and sustainable materials throughout. The planting includes a variety of species selected to provide seasonal interest and habitats for pollinators, contributing to the ecological value of City Campus.

1.4.2. Dryden Corner

The redevelopment of Dryden Corner transformed a neglected plot into a welcoming space for relaxation and socialising. Designed by NTU alumna Jackie Setchfield, the garden features a calming rill water feature and seating made from sustainably sourced wood.

In 2023, a 12-metre-high poem titled Here & Now was painted on the side of 50 Shakespeare Street by NTU alumna Lucinda Ireland. Written by Claire Miller, an NTU Web and Digital Content Officer, the poem was inspired by the garden’s atmosphere and encourages reflection and mindfulness. This creative addition celebrates the connection between nature, art, and well-being at the heart of the campus.



Figure 7 – Boots Library Roof Garden



Figure 8 – Here & Now Poetry Wall



Figure 9 – Dryden Corner

1.5. Biodiversity Commitment at NTU

Nottingham Trent University aims to be recognised as the most environmentally responsible university in the world, a goal that depends on conserving and enhancing biodiversity across its estate. To support this, NTU is committed to:

- Protecting and enhancing biodiversity within the estate
- Raising awareness among students, staff, and visitors
- Embedding biodiversity into campus planning and management

NTU is a founding signatory of the Nature Positive Universities Alliance, launched at COP15 in Montreal in December 2022. This global network of universities is dedicated to halting and reversing nature loss by addressing institutional impacts and restoring damaged ecosystems.

Aligned with this pledge, NTU has set the following objectives:

- Conduct a baseline biodiversity survey to identify key habitats and species
- Set SMART, ambitious biodiversity targets
- Implement actions to conserve and enhance biodiversity
- Report progress annually and transparently
- Engage the university community to raise awareness and inspire action

In support of these aims, NTU replaced mown lawn verges with native wildflower strips since 2019 and participates in No Mow May, allowing grass to grow into summer to support pollinators and other invertebrates.



Section 2: A Welcoming Place

2. A Welcoming Place

2.1. Good and Safe Access

City Campus is highly accessible by public transport. Nottingham City Transport buses stop within a five-minute walk, and the Uni 4 service provides a direct link between Clifton Campus, Nottingham Train Station, and City Campus during term time. NTU students benefit from discounted fares via the NCTX Buses app.

The Nottingham Express Transport tram network serves the campus with a stop directly outside. For drivers, park-and-ride sites offer a cost-effective alternative to city-centre parking. Recommended locations include:

- The Forest (NG7 6AQ)
- Phoenix Park (NG8 6AS)
- Toton Lane (NG9 7JA)



Figure 10 – NET Tram at City Campus

For those travelling by car, the closest and largest parking facilities to City Campus are:

- Trinity Square (NG1 4BT)
- Talbot Street (NG1 5GG)
- Victoria Centre (NG1 3QN)

To promote sustainable travel, NTU offers a Cycle Hub on City Campus, where staff and students can hire bikes for £49 per year. This service provides an affordable, eco-friendly option for commuting between campuses, accommodation, and the city.



Figure 11 – *City Campus Cycle Hub*

Access across City Campus meets BS 8300 standards, ensuring buildings and their approaches are inclusive for people with disabilities. Features include level or ramped entrances, dropped kerbs, and tactile paving at most road crossings. Pathways are designed for wheelchair and pushchair use, and all new developments carefully consider Disability Discrimination Act requirements to maintain accessibility for all.

2.2. Signage

Standardised signage featuring the NTU logo and typeface is displayed across the campus. In 2020, the campus underwent a comprehensive update, with external signs, monoliths, and windows rebranded to reflect the university's identity. Informative signage is also placed in rewilding areas to engage visitors and highlight the importance of creating habitats for birds, bees, and other local wildlife.



Figure 12 – Waverley Building and Rewilding Area Signage.

2.3. Equal Access for All

As City Campus is not only a resource for students and academics but also offers facilities for the local community. Bonington Gallery hosts free exhibitions and events open to all, including a main gallery space, Bonington Vitrites for micro-exhibitions, archive displays, and satellite exhibitions in the atrium. The gallery also delivers an events programme featuring talks, workshops, film screenings, and performances.

Bonington’s Art Shop, one of the few remaining art supply stores in Nottingham, is open to the public and offers a wide range of products from paper and card to paints, pens, and sketchbooks.



Section 3: Health, Safety and Security

3. Health, Safety and Security

3.1. Appropriate Provision of Quality Facilities and Equipment

The City Campus is maintained to ensure a safe and welcoming environment for all users. The Estates Department conducts regular inspections, with issues reported via the Estates Helpdesk on MyHub prioritised and resolved promptly. Members of the public can raise concerns with Reception Officers or use contact numbers displayed across campus.

A wide range of well-maintained indoor and outdoor spaces is available for students, staff, and visitors, supported by landscaping, maintenance, and sports teams. Outdoor seating is provided in areas such as Dryden Corner, Goldsmith Street, and the Boots Library Roof Garden. Toilets are located throughout the campus, with some accessible to the public.

Campus dining outlets offer diverse, freshly prepared meals, including healthy options and great-value breakfasts. NTU Catering works with Sustainability and Procurement teams to ensure ethical and environmentally responsible sourcing.



Figure 13 – Outdoor Seating Space on Goldsmith Street

3.2. Safe Equipment and Facilities

Built features across the campus are regularly inspected, and any necessary actions are taken promptly. All grounds maintenance equipment undergoes annual safety checks, and staff protection is supported by the Reactec Hand Arm Vibration (HAV) monitoring system. As part of NTU's Hedgehog Friendly Campus initiative, all strimmers and mowers are labelled to remind users to check for hedgehogs and other wildlife before use (see **Section 7.2** for details).

Tree health is actively monitored to mitigate risks from pests and diseases. External consultants, FPCR Environment and Design Ltd, survey all campus tree stock every three years, providing advice on health and identifying any dead, dying, or dangerous trees. The most recent survey was completed in December 2022.

3.3. Personal Security

City Campus security operates 24/7, providing surveillance and support for all site users. Security staff are trained first aiders and can be contacted on 0115 848 6600, a number displayed on campus information boards. All incidents are recorded, and annual statistics are reviewed to refine security policies and reduce future risks.

The campus is monitored by a comprehensive CCTV network, with footage accessible to the Security Team for full site coverage. Newly installed Emergency Security Points (ESPs) are located at key areas identified through staff and student feedback, including:

- ESP5 Sandby Medical Centre
- ESP6 Chaucer Path to Djanogoly
- ESP7 Bonington
- ESP11 Hampden Street Car Park

Each ESP includes an intercom, camera, and CCTV coverage. Pressing the call button connects directly to the Security Team, who can assess the situation, provide advice, attend the scene, or contact emergency services.

Landscape Services works with Security to maintain clear sightlines and unobstructed CCTV views. Street lighting ensures safe visibility along roads and paths, and hedges near these routes are maintained at a maximum height of 1.5 m for security and maintenance purposes.

3.4. Health and Safety

The Landscape Services Manager ensures safe working practices through regular reviews of risk assessments and procedures. COSHH assessments are documented and updated as

required, and staff are fully trained in their responsibilities under Health and Safety legislation. Grounds staff receive appropriate protective clothing and equipment, along with training in key areas such as chainsaw use, tree climbing, fire safety, and first aid. They also have access to risk assessments and guidance materials outlining hazards specific to their roles.

The University's Health, Safety and Wellbeing Team provides comprehensive policies and procedures to minimise risks across the campus. Effective management practices ensure the grounds remain safe for staff, students, and visitors.

3.5. Accident and Incident Reporting

In compliance with Health and Safety at Work legislation, all accidents and near misses on campus are reported through a standard procedure. Reports are monitored centrally, and investigations are initiated where necessary to prevent recurrence.

3.6. Dog Fouling

A dog waste bin is provided near the Chaucer building to encourage responsible disposal and maintain a clean, welcoming environment.

3.7. Working Hours

The Estates Department coordinates with the Timetabling Team to avoid disruption during exams, sports events, and open days. Any necessary works are communicated via digital Estates Works Notifications, and updates on campus developments are available on the [Campus Developments webpage](#).



Section 4: Cleanliness and Maintenance

4. Cleanliness and Maintenance

4.1. Litter and Waste Management

4.1.1. Facilities and Services

Campus appearance is a key priority for NTU and supports student recruitment. The Facilities Team services external litter and recycling bins daily, with litter picking and leaf sweeping as needed. Weekday operations focus on high-use weekend areas, such as around the Students' Union, on Monday mornings.

General waste and recycling banks are widely available across campus. In 2025, all external bins were replaced to standardise waste disposal, and revised signage has been introduced on internal bins to improve waste segregation. NTU operates a fully integrated Environmental Management System (EMS), supported by policies that guide sustainability efforts. Waste guides are available on the Sustainability webpages, promoting recycling and use of donation banks.

4.1.2. British Heart Foundation

Clothing recycling banks are located across Nottingham, including Burns Street, St Ann's Street, Maid Marian Way, Curzon Street, and Raleigh Street. NTU's Sustainability Team, in partnership with UPP Ltd and NTSU, promotes donation points across three campuses.

This collaboration won the Retail Partner category at the British Heart Foundation Hero Awards in 2019. In 2022, students from NTU and the University of Nottingham donated 6,230 bags of items through the Pack for Good campaign, raising £87,220 and diverting nearly 50 tonnes of waste from landfill, equivalent to 294,163 kg of CO₂ emissions. In 2023, The Big Clear Out diverted over 4,000 kg of NTU student waste from landfill. More than 500 bags of household and electrical items, valued at over £7,000, were donated to the British Heart Foundation. Additionally, around 800 kg of food was gifted to local food banks Himmah and Emmanuel House.

4.1.3. Warp It

NTU's Sustainability Team promotes Warp It, an online portal for redistributing unwanted furniture and equipment internally. All staff can use the platform to support reuse across the university. Since September 2018, 2,160 items have been reused, saving 67,022 kg of CO₂, diverting 26,855 kg of waste from landfill, and achieving estimated cost savings of £141,796 in disposal, replacement, and administration.

4.2. Horticultural Maintenance

The Landscape Services Team maintains the campus grounds, enhancing its appearance and supporting NTU's reputation. Seasonal priorities include leaf clearance in autumn and grass cutting in summer. Alongside an annual maintenance programme, a longer-term plan addresses complex landscape issues, detailed in **Appendix B**.



Figure 14 – Students Using Arkwright Amenity Lawn

4.3. Tree Maintenance

FPCR conducts a full tree survey every three years, mapping all trees and assigning unique codes linked to a database detailing species and condition. This system enables effective management and maintenance by the Landscape Services Team. Reactive measures, such as storm damage response, complement this proactive approach.

4.4. Building and Infrastructure Maintenance

City Campus features a diverse mix of buildings in age, style, and function. The Estates Department ensures all facilities are maintained to a high standard, supported by an on-site maintenance team.

4.5. Equipment Maintenance

All work equipment is inspected under the Provision and Use of Work Equipment Regulations 1998 (PUWER). Electrical appliances undergo PAT testing in line with the

Health and Safety at Work Act 1974, and tree climbing equipment is inspected every six months under LOLER regulations.

NTU vehicles are managed by Campus Services, ensuring servicing and compliance. Specialist vehicles, such as tractors, are maintained under lease agreements where applicable. A designated wash-down area in Bonnington Yard, approved by Severn Trent, is used for cleaning landscape machinery and NTU fleet vehicles.

4.6. Maintenance Planning

The Landscape Services Team adapts to changing conditions, carrying out tasks such as gritting roads during icy weather and clearing tree debris after storms. Daily maintenance priorities are agreed with the Landscape Services Manager, with health and safety tasks given top priority. The team follows a tree replacement policy, planting at least one new tree for every one removed.

Cyclical tasks include shrub bed maintenance, summer bedding planting, mowing, and strimming. A sample planning document is provided in Appendix A. Long-term maintenance is shaped by campus development and the condition of landscape features.



Section 5: Environmental Management

5. Environmental Management

5.1. Managing Environmental Impacts

5.1.1. Policies and Pledges

NTU is committed to reducing its environmental impact. The Environmental Policy is publicly available on the NTU Sustainability webpages. As of December 2023, NTU is rated a first-class university in the People & Planet League and ranked 2nd in the University of Indonesia Green Metric World University Ranking.

NTU has pledged to achieve Net Zero Carbon emissions by 2040. This commitment is now a strategic KPI, with milestones set for 2025 and 2030. The pledge covers emissions from energy use across the estate and scope 3 emissions from activities beyond direct control.

5.1.2. Staff Training

The Sustainability Team delivers monthly Sustainability Awareness at NTU sessions for all staff, including new starters. Environmental Awareness and Compliance Training is also provided for Estates, Catering, and Cleaning Services staff. These sessions help colleagues understand NTU's sustainability goals, their responsibilities, and ways to engage with related projects and events. Environmental Compliance training is also available for NTU staff as a suite of online modules through Thrive.

5.2. ISO 14001 Environmental Management System

NTU's Environmental Management System was established through the EcoCampus scheme and is aligned with the ISO 14001 standard. Certification was first achieved in November 2012. ISO 14001 provides a framework for identifying and managing environmental aspects, improving performance, and ensuring legal compliance. This certification confirms that NTU has robust systems in place to manage environmental impacts and meet its sustainability objectives.

5.3. Pesticides and Herbicides

Integrated Pest Management is used across the estate to support landscape maintenance through environmentally responsible practices. Pesticide use is minimal and applied only when necessary, always in line with legislative guidance. Cultural and biological controls are prioritised within maintenance schedules. Herbicides are used for weed control in specific areas, along with turf fungicides and insecticides where appropriate. All grounds

staff are fully trained and certified in the safe application of herbicides and hold the necessary certifications.

5.4. Composting

To reduce the environmental impact of landscaping, NTU uses peat-free alternatives wherever possible, including compost produced on-site. Woody material is chipped for mulching, while softer materials such as autumn leaves are processed for soil enrichment using a composting machine and chipper. All compost generated is reused across campus, with an additional composting area located at the Waverly Natural Dye Garden.

5.5. Travel & Transport

5.5.1. NCT Buses

During term time, the NTU NCTX Number 4 bus service runs every 7–10 minutes between City Campus and Clifton Campus, while the Number 26 connects City Campus with Brackenhurst. The fleet was upgraded in 2019 with clean buses featuring Euro IV engines, significantly reducing emissions and carbon output.

5.5.2 NET Tram

City Campus is served by the Nottingham Express Transport tram network, with a dedicated stop at the centre of the site. Park-and-ride services provide cost-effective access to the campus, reducing congestion and emissions.

5.5.3 Cycle Provisions

NTU promotes cycling through infrastructure improvements, engagement events, and a bike hire scheme. Over 200 hybrid bikes are available for £49 per academic year, including lights, a D lock, maintenance sessions, secure storage, and Ridewise training. E-bikes have been available for staff trials since 2020. The Sustainability webpages provide maps of cycle routes, compound locations, lockers, and showers. Currently, 600 cycle spaces are available across campus, many in secure shelters with swipe access and CCTV. Plans include expanding covered cycle parking as part of the City Campus travel plan.

5.5.4 E-Scooters

NTU supports Nottingham City Council's e-scooter trial, offering a greener option for short journeys. The scheme, operated by Tier-Dott, will relaunch in March 2025 with 1,300 vehicles, reducing reliance on cars and lowering emissions.

5.5.5 Electric Vehicles

NTU provides 32 EV charging bays across its campuses, including 10 at City Campus and five accessible spaces for blue badge holders. Since 2014, NTU has invested in zero-emission vehicles for maintenance teams, including electric-powered John Deere gators, reinforcing its commitment to carbon reduction.

5.6. Energy Consumption and Production

5.6.1. Solar Photovoltaic Panels (PV)

Photovoltaic systems installed on the Chaucer and Dryden Enterprise Centre buildings generated 41,835 kWh of renewable energy in 2023/24, reducing reliance on non-renewable sources and supporting NTU's sustainability goals.

5.6.1. District Heat Network

Several City Campus buildings, including Newton and Arkwright, are connected to the Nottingham District Energy Scheme, the UK's largest district heating network. This system recovers energy from waste, offsetting around 27,000 tonnes of CO₂ annually compared to gas use, significantly reducing NTU's carbon footprint.

5.7. Staff Engagement

NTU launched Green Rewards in 2019, enabling staff and students to earn incentives for sustainable actions. As of January 2025, 4,731 participants have completed over 426,906 actions, avoiding 808,549 kg of CO₂.

The Sustainability Representatives Scheme engages 70 staff members who liaise with the Sustainability Team, attend termly meetings, and share ideas via a dedicated Microsoft Teams network. Monthly awareness courses ensure all staff understand NTU's sustainability commitments and how to contribute.

5.8. Climate Change and Adaptation

NTU recognises the environmental impact of its activities and is committed to reducing contributions to climate change through an integrated approach to landscape management.

The Landscape Services team has phased out peat-based compost and is trialling sustainable alternatives such as bark mulch. Planting schemes prioritise drought-tolerant species and advanced stock for quicker establishment, improving resilience to changing conditions. These measures not only support NTU's wider sustainability goals but also enhance biodiversity by creating habitats for pollinators and urban wildlife.

By combining climate-resilient planting with sustainable materials and practices, NTU ensures the City Campus landscape remains adaptable, ecologically rich, and aligned with long-term environmental objectives.

5.9.1. Green Infrastructure

City Campus features extensive green infrastructure, including one of the region's largest green roofs on Newton and Arkwright (2,500 m² with 13 sedum varieties), the Boots Roof Garden, and living walls on University Hall and the Design and Digital Arts Building. These installations:

- Support biodiversity by attracting pollinators and invertebrates
- Improve air quality and absorb heat, reducing energy demand
- Enhance insulation and manage stormwater, lowering flood risk
- Provide tranquil spaces for staff and students, promoting well-being



Section 6: Biodiversity, Landscape and Heritage

6. Biodiversity, Landscape and Heritage

6.1. Management of Natural Features, Wild Fauna, and Flora

City Campus supports a variety of habitats, including broadleaved woodland, mixed scrub, hedgerows, urban trees, modified grassland, green roofs, living walls, and ornamental planting. These areas are managed to maximise biodiversity and create resilient ecosystems.

Woodland patches are maintained to encourage native ground flora, while log and stone piles provide shelter for hedgehogs, toads, and other ground-dwelling species. Bug hotels are installed as part of development compensation and student-led projects, supporting pollinators and beneficial insects. Bird and bat boxes are fitted to trees, and where safe, standing deadwood is retained to provide habitats for invertebrates. Tree stumps are cut high to attract wood-boring beetles, with some sculpted to hold water for additional ecological benefits.

NTU holds Platinum accreditation as a Hedgehog Friendly Campus across all sites, reflecting its commitment to wildlife protection. These measures enhance biodiversity, support urban wildlife, and contribute to the ecological health and visual appeal of the campus.

6.2. Biodiversity Baseline

A Preliminary Ecological Appraisal (PEA) and baseline biodiversity assessment of City Campus were undertaken during May 2024, to create a baseline of the biodiversity on Site and inform ongoing management. Taking into account the habitat types present on Site and their condition, the baseline biodiversity value of the Site comprises 22.48 habitat units and 0.52 hedgerow units.

6.3. Peregrine Falcons

Peregrine falcons have been nesting on a window ledge on level 9 of NTU's Newton building for over twenty years, with more than 45 chicks successfully fledging from the site during this time. These birds of prey are protected under Schedule 1 of the Wildlife and Countryside Act 1981, highlighting their importance in biodiversity conservation.

NTU collaborates with the Nottinghamshire Wildlife Trust to protect the falcons and their nesting site. The university also hosts a live webcam, known as the 'falcon cam,' which

allows viewers from around the world to watch the falcons throughout the breeding season, which runs from March to September. The live stream of the falcons' activities has gained significant popularity, with more than 1 million views worldwide in 2023.

This initiative not only helps protect these remarkable birds but also provides a unique opportunity for global audiences to engage with nature and learn about the falcons' journey as they raise their chicks in an urban environment.



Figure 15 – *Peregrine Falcon Nest Box*

6.4. Rewilding Areas

NTU is increasing biodiversity on City Campus by converting amenity grassland into rewilded areas and wildflower meadows. These habitats are managed with a single annual cut in late summer, allowing wildflowers to set seed and propagate. Cuttings are removed to maintain low-fertility soils, which encourage greater species diversity. In 2024, Bee orchids flowered in a rewilding area, demonstrating the success of this approach. Wildlife safety is prioritised before mowing or strimming, with checks for hedgehogs and other species. All grounds maintenance equipment carries “Check for hedgehogs” labels to reinforce this practice. These initiatives, delivered in partnership between Landscape Services and the Sustainability Team, create vibrant habitats for pollinators and other wildlife, supporting NTU’s commitment to ecological enhancement and climate resilience.

6.5. Water Conservation

Summer bedding at NTU is designed for sustainability and reduced water use. Planting beds incorporate water-retaining granules to maintain soil moisture during dry periods, minimising the need for frequent irrigation. Beds are also mulched to reduce evaporation, suppress weeds, regulate soil temperature, and improve soil structure. These practices conserve water, lower environmental impact, and ensure vibrant displays across the campus.



Figure 16 – Rewilding Area Bee Orchid

6.6. Planting Policy

NTU prioritises native species to support biodiversity and provide habitats for local wildlife. Planting schemes focus on nectar- and berry-producing species of local provenance, while any non-native plants are selected to enhance ecological value. Tree planting and

hedgerow replacements favour species such as Ash, Field Maple, and Oak, with proactive monitoring for pests and diseases, including Ash dieback, following best practice for management and mitigation.

The £100,000 glasshouse at Brackenhurst Campus underpins sustainable landscaping by producing over 30,000 seasonal bedding plants annually from seeds and plugs, meeting most soft landscaping needs across all campuses. Additional plants are sourced from trusted nurseries when required.

6.7. Conservation of Landscape Features

City Campus includes six Grade II listed buildings, such as Newton and Arkwright, reflecting NTU's commitment to preserving architectural heritage. The campus also lies within a Tree Conservation Area, with several trees protected by Tree Preservation Orders for their historical and ecological value. All trees are regularly surveyed by external specialists, and maintenance is carried out as required to ensure safety and uphold both natural and built heritage.

6.8. Biodiversity Monitoring

NTU engages staff, students, and visitors in biodiversity monitoring through the iNaturalist Campus Biodiversity Network Project. Citizen scientists have recorded over 720 species across NTU campuses, creating research-quality data that informs conservation work and supports ecological research.

City Campus Landscape Management Plan

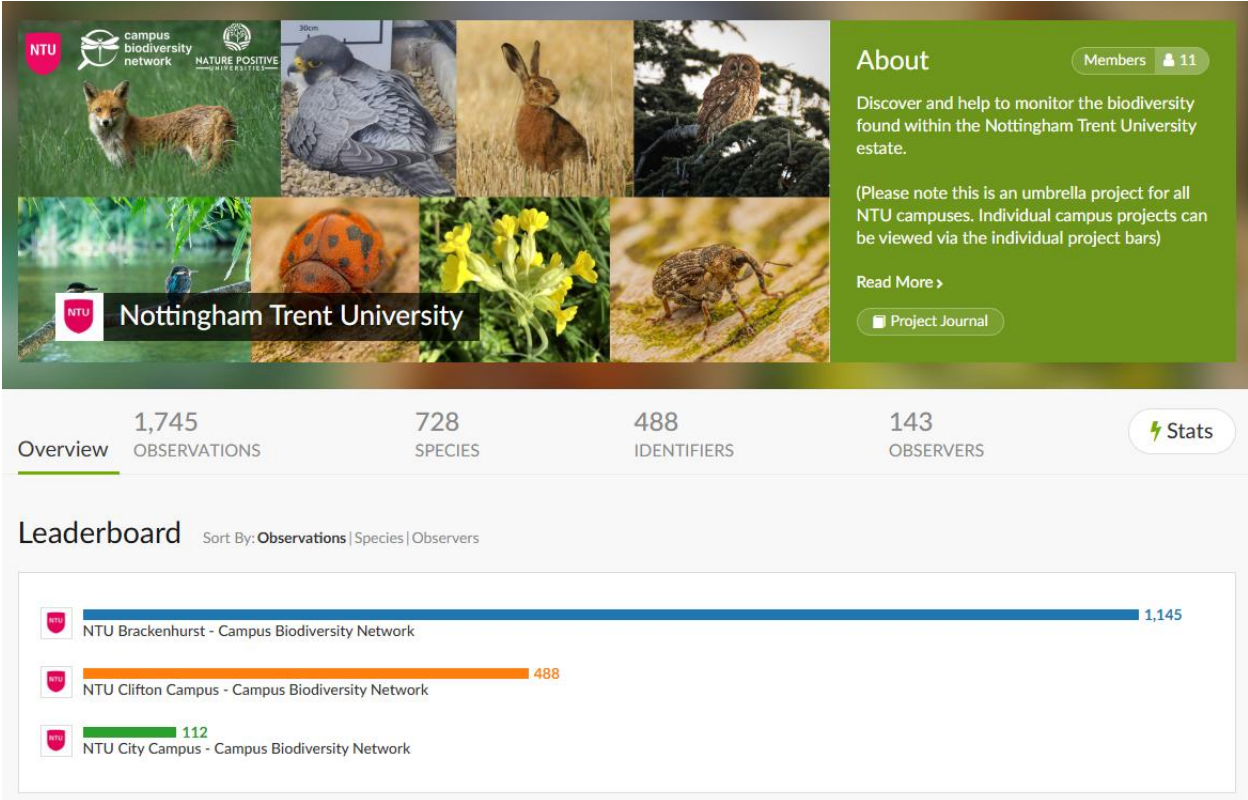


Figure 17 – iNaturalist Biodiversity Monitoring Project



Section 7: Community Involvement

7. Community Involvement

7.1. Community Events

City Campus is a key community hub, hosting events for students, staff, schools, and the public. Activities range from art exhibitions and music performances to sustainability workshops and natural dye demonstrations, fostering connection and environmental awareness.

The University also offers one-day seminars open to professionals and the public, widening access to specialist knowledge. Regular Open Days provide opportunities for all to explore campus facilities, supported by clear signage and inclusive programming. These initiatives demonstrate best practice in community engagement and accessibility, core principles of the Green Flag Award.

7.2. Bonington Gallery

Established in 1969, Bonington Gallery is a leading visual arts space within NTU's School of Art & Design, offering free access to exhibitions and events of local, national, and international significance. Its multidisciplinary programme spans visual art, fashion, film, music, and design, shaped by collaboration with NTU's academic community.

The Gallery enriches Nottingham's cultural landscape through talks, workshops, screenings, and performances, alongside its Art Shop, one of the city's last remaining art supply stores. Past exhibitions have featured acclaimed artists including Sonia Boyce, Steve McQueen, and Hetain Patel, reinforcing its role as a vibrant, inclusive cultural resource. This commitment to cultural accessibility and public engagement reflects Green Flag Award principles of inclusivity and community involvement.

7.3. Hedgehog Friendly Campus (HFC)

Since 2020, NTU has actively participated in the Hedgehog Friendly Campus initiative, engaging staff and students in creating a safer environment for hedgehogs. This commitment earned NTU the Platinum Award in 2024, recognising its leadership in hedgehog conservation.

Key actions include:

City Campus Landscape Management Plan

- **Awareness Campaigns:** Stickers on all trimmers and mowers to reduce harm (see Section 3.2).
- **Events and Education:** Support for Hedgehog Awareness Week, webinars, and social media campaigns.
- **Surveys and Audits:** Regular hazard audits and mammal tunnel surveys involving staff and students.
- **Training:** Landscaping Services Team completed Hedgehog Friendly Grounds training in 2022.

The initiative highlights NTU's dedication to biodiversity and fosters community involvement and environmental stewardship.

7.4. Room Hire

NTU's City Campus offers a range of event spaces for hire, from small meetings to large conferences, with excellent transport links and modern facilities. Options include:

- **Newton and Arkwright:** Flexible spaces with advanced AV technology, including lecture theatres for up to 450 guests.
- **University Hall:** A Grade II listed venue combining historic character with modern amenities.
- **Boots Library Meeting Rooms:** Quiet, well-equipped spaces for academic workshops.
- **Old Chemistry Theatre:** A distinctive venue for talks and creative presentations.
- **Bonington Gallery and Atrium:** Inspiring spaces for exhibitions and networking events.

Tailored catering and on-site event coordination ensure high-quality experiences.

7.5. Sports Facilities

NTU Sport offers a wide range of facilities and activities for students, staff, and the local community, supporting participation from recreational users to elite athletes. Located within the Students' Union building, the City Sports Centre includes:

- A two-storey gym with 100 fitness stations
- A 30ft climbing wall
- A sports therapy suite providing physiotherapy and massage
- A multi-purpose sports hall built to Sport England standards
- Indoor pitches and courts
- A dance studio hosting fitness classes and club sessions

These facilities promote health, well-being, and community engagement through accessible, high-quality sports provision. Community access examples include:

- **Stone Soup Academy:** Uses the sports hall four times a week for PE, supporting students outside mainstream education.
- **Nottingham Forest Futures:** Runs football and mentoring sessions twice weekly for young people aged 14–25.
- **Landmarks Specialist College:** Accesses the hall and fitness suite throughout the year for life skills and vocational training for learners with special educational needs.
- **NEST School:** Provides sports sessions for young asylum seekers aged 15–19.
- **Nottingham College:** Uses the hall for PE assessments for students of all abilities.

7.6. Natural Dye Garden

The Nottingham School of Art & Design has created a natural dye garden outside the Waverley building, providing a sustainable, chemical-free space for cultivating plants. The garden supports teaching, student projects, and promotes environmentally conscious practices in art and design. Benefits of natural dyes include:

- **Renewable and biodegradable:** Plant-based dyes are fully renewable and eco-friendly.
- **Non-toxic production:** Unlike synthetic dyes, they avoid harmful chemicals and hazardous by-products.
- **Efficient water use:** Production requires less water, and nutrient-rich wastewater can be recycled.

The garden is self-sustaining, with compost bins for organic waste, water butts for rainwater collection, and organic cultivation techniques. It serves as both a learning resource and a tranquil space for student well-being. In 2024, staff hosted a Community Day featuring workshops on planting and natural dye techniques, further connecting education, creativity, and sustainability.

7.7. Student Volunteering

During the 2023 Student Welcome, NTU Sustainability partnered with NTSU and Global Lounge to transform an ornamental planting area into a pollinator-friendly space. Student volunteers prepared the ground and planted native wildflower plugs, creating a vibrant habitat for pollinators and other wildlife. In 2025, students at Nottingham Trent International College also took part in welcome planting activities, further enhancing campus green spaces and promoting environmental stewardship. These initiatives not only improve biodiversity but also encourage students to engage in sustainability and contribute to a healthier environment.



Figure 18 – Natural Dye Garden Raised Bed



Figure 19 – Natural Dye Garden Community Day



Figure 20 – Natural Dye Garden Signage



Figure 21 – Pollinator Square Wildflower Patch



Section 8: Marketing and Communication

8. Marketing and Communication

8.1. Marketing and Promotion

NTU is increasing efforts to raise awareness of City Campus facilities available for public use. The NTU website provides detailed information on campus amenities and green spaces, while the news section and Sustainability webpages share updates on events and opportunities, keeping the community informed and engaged.

8.2. Communication Channels

Internal communication includes the MyNTU dashboard, which provides daily updates for staff, and the University Calendar for students and staff. Green Flag status is promoted through events such as Sustainability Awareness sessions, Sustainability in Practice tours, and Welcome Week activities. It is also featured on NTU Sustainability webpages and Instagram.

The Sustainability Team works closely with staff and student communications teams to ensure key messages and opportunities are widely shared. The team manages its own social media accounts, supported by other NTU channels. NTU Estates also uses Instagram and dedicated web pages to share updates and notify staff and students of campus developments.

8.3. Educational Information

NTU's Sustainability webpages feature a dedicated section for City Campus, where staff, students, and members of the public can access this Landscape Management Plan (LMP) and explore the numerous opportunities available on campus.



Section 9: Management

9. Management

9.1. Management Structure

City Campus is managed by the Landscape Services Team under the Estates Department. Working closely with the Sustainability Team, they share best practice guidance on environmental management across the University.

The Director of Estates, supported by the University Executive Team, oversees implementation of the Environmental Policy. The Landscape Services Team holds regular meetings with academic staff to align activities with teaching projects. This Landscape Management Plan is reviewed annually by the Sustainability Team and Landscape Services Manager.

9.2. Project Funding

Redevelopment projects are funded through University working capital, with new building projects incorporating landscaped areas guided by the Sustainability Team. The Landscape Services Team manages an annual budget of approximately £500,000 across all campuses. A detailed breakdown of major project spending is provided in the Implementation Plan (**Appendix B**).

9.3. Management Priorities

Short-term aims:

- Review and expand rewilded areas across campus
- Embed engagement activities into campus management
- Realign resources to complete key tasks

Long-term aims:

- Increase creation of habitats for invertebrates, birds, bats, and small mammals
- Secure additional funding to maintain and enhance green spaces

Appendices

Appendix A – Landscape Operations Service Level Agreement

Landscape Maintenance Operations

- 1. Mowing:** The Landscape Services (LS) team will manage & mow key areas from March to December each year. These areas will be kept to a height of between 25-75mm as appropriate. Where the weather significantly impacts these grass height parameters areas will be cut as soon as practicable and where weather & ground conditions permit.
- 2. Strimming:** the LS team will undertake this activity from March to December each year to maintain areas inaccessible by regular mowing i.e. around trees, obstacles and building perimeters. Subject to other work priorities the LS team aim to complete this task 3-6 times per year only.
- 3. Wildflower areas:** maintenance of these areas will be dependent upon local and species variations as well as prevailing weather and ground conditions. The maintenance of these areas, at Clifton Campus, sits with contractors unless agreed otherwise. Wildflower areas at Brackenhurst are managed by the LS team in conjunction with NTU ConSoc. All wildflower areas are subject to a cut-and-collect activity during late Aug/ early Sept.
- 4. Rewilded areas:** maintenance of these areas will be agreed/identified across all campuses to support biodiversity and plots may vary from year to year. These areas are left unmown from the end of April to early September after which they will be subject to a cut-and-collect process to tidy up for the Autumn.
- 5. Lawn edges:** where deemed necessary key areas will be subject to edging off with half-moons during the Autumn/Winter. Targeted areas will be subject to trimming back, with lawn shears, six times per year (Spring-Summer) to maintain a tidy edge along key ornamental beds.
- 6. Pruning:** Periodically prune and deadhead a wide range of plants depending on species and time throughout the full year.
- 7. Hedges/understorey mixes:** these will have their tops and sides pruned 1-2 times per year subject to location and potential visibility/safety issues as well as managing the health & vigour of hedges Any works during the bird nesting season (1st week of March - 1st week of Sept) will be subject to a bird nest survey 24 hours before any works commencing. All such surveys are to be signed, dated and kept for record.
- 8. Leaf clearance:** will be managed during the autumn & winter periods as part of overall landscape maintenance activities. However, due to the sheer volume of leaf fall, across all campuses, collection will be limited and prioritised accordingly.
- 9. Weed & pest control:** will be undertaken by a variety of methods in line with best practice which limits the use of pesticides to the absolute minimum. Such activities include mulching, hand weeding, and creative and selective planting. The use of herbicides will be through spot treatment and the number of applications will range between 3-6 times per year. From time to time, we will contract out broad-scale chemical control to specific areas i.e. grass sports pitches to improve the quality and integrity of the surfaces and this activity will be undertaken at times to keep impact, for users and the environment, to an absolute minimum.
- 10. Sports Pitches (Natural & Synthetic surfaces):** will be prepared, maintained, and set up to support on-campus student BUCS fixtures which will be supplied by NTU Sport. LS are committed to supporting all fixture commitments but will liaise with key stakeholders where prevailing weather and ground conditions may either (1) put the end user at risk and/or (2) put the integrity of the surfaces at risk and/or may cause long-term damage. Where a request comes

in for external use, we will consider the viability and potential implications whilst putting BUCS commitments as our primary consideration. The final decision on cancellations rests with the LS team and in particular the lead operative who maintains the NTU sports pitches. All grass sports surfaces will be reviewed, throughout the season, to determine any potential end-of-season renovations taking place soon after term 2. All decisions will also factor in available funds to do so.

11. **Arboriculture work:** All NTU trees and woodlands will be subject to a 3 yearly consultant's survey to determine the health, condition and potential risk posed (including any recommendations on replacements). Any recommended works will be prioritised as prescribed by the survey. The LS lead operative, who maintains the NTU trees and woodlands, will determine all other remedial works that may be required in between surveys and in particular as soon as practicable after any storms. This lead operative will report back, to management, on any interim works, that requires attention, and/or the intervention of further reports and support required by external arboriculturists/consultants. All related works will be completed in line with BS3998:2010. At key locations, some trees fall within conservation areas and may also be subject to Tree Preservation Orders (TPOs). Any work to these trees should first be assessed and approved by the relevant local authority tree officers, by submitting a formal application with all supporting evidence here. No works shall proceed until consent has been granted. This consent can take up to 8 weeks to be approved unless superseded by any immediate or obvious risks.
12. **Glasshouse work:** the LS team oversee the production of a range of plant materials to support various landscape projects and seasonal bedding schemes across NTU. Volume varies, subject to available resources, but can turn around up to 30k of propagated material every year from seed, cuttings and plugs should resources allow.
13. **Snow clearance & gritting:** will be supported, by the LS team, during adverse winter weather and in conjunction with other key personnel in line with the Estates Gritting Procedure
14. **Litter control:** as part of its routine activities the LS team will collect litter from key landscape areas such as sports areas, shrub beds and lawn areas (inc. dog waste bins). This will be underpinned with support from FSA operatives who oversee overall litter control for all NTU external spaces (inc. waste bins)
15. **Green Waste Recycling:** as part of its wide range of activities LS produces a significant amount of green waste including leaves, tree, and shrub arisings as well as grass cuttings. Such waste is managed via our recycling compound to generate compost to be returned to the NTU landscapes where mulching is required. This process reinforces our commitment to recycling green waste, generated by our activities, as well as reducing the reliance on water consumption and application of pesticides.
16. **Watering:** will be determined by landscape-specific demand throughout the year and be driven by the prevailing climate conditions. Where practicable we will utilise measures to reduce water usage such as the application of water-absorbing gel, wetting agents, and mulches. In addition, we will procure and plant drought-tolerant species, in key settings and aspects,
17. **Living Walls:** will be managed and maintained, through monthly visits/inspections, by external contractors.
18. **Indoor Planters:** which fall under the remit of LS only will be subject to monthly visits to carry out watering, feeding and general health and condition checks. All internal planters that fall outside of this remit will not be subject to such visits.
19. **Sedum Roof:** will be visited 1-2 per year to remove debris and weeds and check general condition. These visits will be carried out in the Autumn-Winter.
20. **Water Features:** will be maintained and tended to with a combination of LS and contractors as well as academics & students to support coursework and research.

Appendix B – Implementation Plan

	Action	Target	Budget	Timescale	Owner	Status
City Campus	Review and implement rewilded areas	To increase the biodiversity of specific areas of grassland by allowing the area to rewild. This will result in the natural establishment of flora and increase the habitat provisions for invertebrates and amphibians.	Within existing budget	2024+	AH	To prioritise and manage within maintenance frequencies
	Promote and support key stakeholders to engage further with green spaces	To promote and enable NTU staff and student groups to engage with green space management.	Within existing budget	2024+	AH/JM	Herb Garden & Dye Garden in progress and dialogue in place with Library team RE roof garden etc.
	General maintenance regimes	To maintain and improve where possible the City campus for staff, students, and wildlife.	Within the existing budget (Subject to SLA)	Ongoing	AH	See Service Level Agreement (Appendix A)
	DaDA Living Wall management and maintenance	To reinforce the sustainability and biodiversity value	Circa £7.5k pa	June 2025+	AH/RT/SB	The remit for management falls under Landscape Services/contract
	Create a Habitat and Protected Species Action Plan for City Campus	To guide future campus development and the ongoing management of the estate to protect and enhance biodiversity	None required	2024+	JM	Completed 2024 (See Appendix C for applicable habitats)

Appendix C – Habitat and Species Conservation Management Plan

Estate-Wide Actions

Action	Owner
Ensure compliance with all national and international legislation regarding biodiversity and the conservation of species and habitats.	S
Define and commission surveys to baseline NTU’s biodiversity, produce habitat maps for the estate and set ambitious targets for biodiversity.	S
Prioritise the planting and management of native nectar and berry-producing species of local provenance across the estate’s landscaping. Where non-native plants are used, ensure that they are carefully selected to enhance biodiversity.	L
Create new habitats through landscape management interventions or by using green and blue infrastructure, such as green roofs and living walls, within development footprints.	CD & L
Monitor and control any invasive species that are or become present within the estate; eradicate invasive species wherever possible.	L & S
Review the estate for habitat fragmentation; improve connectivity within the estate and within the wider landscape by strategically planting native tree species and creating wildlife corridors.	L & S
Where possible, hedgehog highways will be installed in physical barriers that affect connectivity and access e.g., fencing.	S
Continue to install and monitor bat boxes, bird boxes, bird feeders, hedgehog houses, insect hotels, hibernacula, and log piles across all campuses.	CD, L & S
Halt all use of peat-based products in the university's Landscaping Services activities from spring 2023.	L
Engage with staff, students, and visitors on the importance of biodiversity and actions that can be taken to conserve and enhance biodiversity within the estate e.g., using signage and citizen science monitoring projects.	S
Annually report on biodiversity actions undertaken across the estate within the Sustainability Report, which is publicly available on the NTU website.	S

Built Environment

Action	Owner
Ensure all new development projects minimise impacts on biodiversity, aiming to deliver a minimum of 10% biodiversity net gain.	CD
Improve the biodiversity of amenity grassland and formal greenspaces through targeted interventions, including reduced management to allow rewilding and wildflower planting, for the benefit of invertebrates, birds, hedgehogs, and amphibians. Rewilded areas are only to be managed through cut-and-collect in the autumn, to achieve & maintain low soil fertility.	L & S
Include bird and bat boxes in the vicinity of or integrated within the development of all new buildings and extend the installation of bird and bat boxes on existing buildings at all university campuses, to provide urban breeding and nesting habitats.	CD
Continually monitor and evaluate the impact of any development on biodiversity, to identify and address any negative impacts and improve conservation efforts.	CD & S
Aim to use sustainable building materials wherever possible, and consider the environmental lifecycle of buildings, to reduce the impact of any construction and preserve natural habitats.	CD



Woodland & Scrub

Action	Owner
Increase the species and structural diversity of woodlands, by targeting woodland management to create a diverse range of habitats e.g., allowing ground flora to grow by selectively thinning, planting suitable species e.g., those listed within the National Vegetation Classification (NVC) or translocating local leaf litter to encourage flora establishment in suitable habitats.	ARES & L
Create additional habitats in woodlands, such as log piles and leaf piles, to provide shelter for invertebrates, amphibians, and hedgehogs.	L
Standing dead wood and fallen timber will be left in situ unless they pose a safety hazard to footpaths, roads, or highly public areas. This will provide biodiversity benefits to a variety of species including invertebrates and birds.	L
Where practicable and safe to do so, as much standing dead wood will be left as possible and tree stumps will be cut as high as feasible to encourage invertebrates that are dependent on dead or decaying wood.	L
Proactively monitor potential external threats to tree stock, including the national spread of tree diseases; undertake pre-emptive action if required.	L
Install nesting boxes for various bird and bat species to encourage breeding populations and provide woodland shelter.	L & S
Protect all veteran trees within the estate and undertake regular condition inspections to determine sensitive management requirements and manage appropriately.	ARES & L



Non-Agricultural Grasslands

Action	Owner
Extend the area of diverse neutral grassland habitat, by reducing the area of amenity grassland across the estate.	L
Continue to review and expand rewilded and wildflower-planted areas within the estate, by reducing the management of grassland areas and planting local provenance native wildflower seed mixes of pollen and nectar-producing species.	ARES, L & S
Mow grassland areas annually from late summer, to allow wildflowers to set seed and propagate. Cuttings will be collected and removed to achieve and maintain low-fertility soils.	L
Encourage species diversity by reducing soil fertility and introducing local province native species such as yellow rattle.	L
Before the management of grassland, checks will be undertaken for any hedgehogs or other wildlife in the area, to reduce the risk of harm from mowing and strimming equipment. "Check for hedgehogs" warning labels are present on all grounds maintenance equipment as a reminder for staff.	L



Appendix D – City Campus Habitat Map

