



# NTU Accommodation Parent Guide

Your Guide to Student Accommodation at NTU



Nottingham Trent University

# Welcome

This guide has been designed for parents supporting their children as they move into their accommodation at NTU.

## Wi-Fi

All our residences offer free Wi-Fi to keep students connected and help with studies

## Utility Bills

Heating, water and electricity bills are all included in the rental cost of your son/daughter's room

## Insurance

Basic contents insurance is also included in the rental cost with Gallagher at UPP halls. Your son/daughter can access the [hub](#) for easy policy management. Howden for Students provide insurance for our Managed halls.

## Pre-arrival checklist



Your son/daughter will be invited via email to complete their mandatory online induction



They will then complete the induction by booking an arrival slot



Students in UPP halls will need to download the Home at Halls app to complete their inventory



Your son/daughter can then download the Howden for Students app to confirm what's insured and purchase additional cover if required.



# Payment dates



**Term 1**  
**Payment Date**  
**03/10/25**



**Term 2**  
**Payment Date**  
**15/01/26**



**Term 3**  
**Payment Date**  
**16/04/26**

# Licence agreement dates

**44 Week Contract**  
**12 Sep 2025 - 17 July 2026**

**51 Week Contract**  
**06 Sep 2025 - 29 August 2026**

**Semester 1 Contract 1a**  
**12 Sep 2025 - 03 Jan 2026**

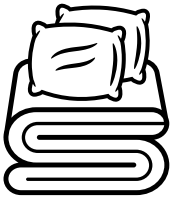
**Semester 1 Contract 1b**  
**12 Sep 2025 - 23 Jan 2026**

**51 Week January Start Contract**  
**10 Jan 2026 - 02 Jan 2027**



Your son/daughter's payment plan must be set up in the [accommodation portal](#) before arrival. They can log in and amend bank details on the system at any time if required. For any Finance queries, please contact the team on +44 (0)115 848 6500.

# What to bring



**Bed linen and towels**



**Cookware, crockery and cutlery**



**Toiletries**



**Warm clothing and hangers**

## Bedding packs

Students can purchase bedding and kitchen packs prior to arrival from [www.unikitout.co.uk](http://www.unikitout.co.uk)

**Use code TRENT10 for 10% off your order!**



# Prohibited items

- Candles / joss sticks / incandescent burners
- LED strip lights and mains powered fairy lights
- Electric or gas appliances and heaters
- Heavy-duty electrical appliances
- Fridges / freezers (medical fridges are available, please contact [accommodation@ntu.ac.uk](mailto:accommodation@ntu.ac.uk) to arrange, subject to condition)
- Deep fat fryers
- BBQs / gas stoves
- Pets

**The above list is not exhaustive and provided as a guide only. If you have any concerns about an item please contact your child's residence team.**

## Laundry

All residences are fitted with their own washing machines. The facilities are offered by third party providers and are available at an additional charge. The provider and necessary app for each hall is listed in the laundry room.

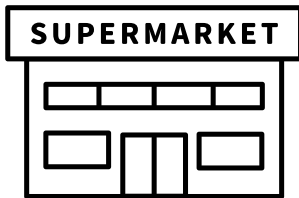


Check out our [website](#) for a more comprehensive guide to moving in

# Campus information

## City campus

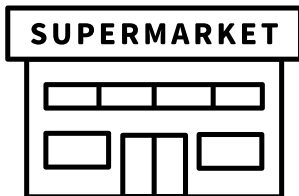
Our City campus is located in the heart of Nottingham, only a five-minute walk from the very best of the city's shopping, eating, drinking, culture and nightlife. We have 5 on-campus halls, and 5 that are only a short walk or bus ride away. Find out more on our [website](#).



- Tesco Express on Shakespeare Street, around a 5-minute walk from Gill Street South
- For more variety, there is a Tesco Metro inside Victoria Shopping Centre, a 8-10 minute walk which is open 7am – 11pm Monday – Saturday and 11am-5pm on Sundays.

## Clifton Campus

Clifton campus is located four miles south of the city centre. There are 2 halls located just minutes away from the on-campus student bar, gym and lecture theatres. There are regular buses that run between the campus and the city, and the journey takes around 25 minutes. Explore our [website](#) for more information.

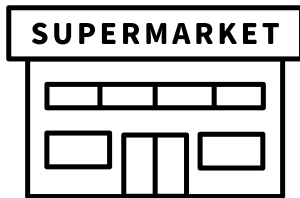


- There is a Spar convenience store on campus
- Lidl is a 16 minute walk from campus (NG11 9AY)
- B&M Home Store is a 15 minute walk from campus for student essentials

# Campus information

## Brackenhurst campus

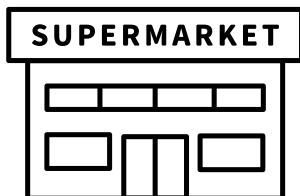
Brackenhurst campus is 14 miles from the city centre with a regular bus service running between, and a short walk from the picturesque town of Southwell. The campus itself is well equipped with an onsite shop, cafe and bar. Find out more on our [website](#).



- Co-Op, Southwell - open daily for essentials, just a 10 minute walk from campus
- Morrisons, Newark - a 15-20 minute car journey for a weekly shop; students can also order click and collect delivery to campus

## NTU Mansfield

NTU in Mansfield is based at Vision West Nottinghamshire College, approximately 14 miles north of Nottingham and easily reached by car, train and bus. There is ample parking on-site, and the nearby town of Mansfield is on the doorstep. Check out our [website](#) for more details.



- Lidl, Nottingham Road - ideal for low-cost weekly shops and a short walk from the town centre
- Tesco Extra, Oak Tree Lane - open til midnight for a full shop or late night essentials
- Co-Op, Southwell Road West - for snacks or quick buys

# Parking & unloading

## Car

**City campus** - Parking in Nottingham city centre is very limited. If you live outside of Nottingham city centre and plan to bring your son/daughter to the City campus by car, we recommend using the city's [Park and Ride services](#). We recommend that you use one of the following Park and Ride sites:

- [The Forest \(NG7 6AQ\)](#).
- [Phoenix Park \(NG8 6AS\)](#).
- [Toton Lane \(NG9 7JA\)](#).

The following car parks are recommended for drop off only due to charge per hour:

- [Q Park](#) – 6 minute walk, open 24 hours, 7 days a week
- [Trinity Square](#) – 10 minute walk, open 24 hours, 7 days a week

**Clifton campus** - Clifton campus has parking spaces for drop off or unloading if required - contact your child's residence team to find out more.

**Brackenhurst campus** - parking is available on-site during arrivals.

## Train

If your child is planning on coming by train, they can get timetable information from [National Rail](#). Nottingham Railway Station is a 20-minute walk from the City campus.



## Tram

The City campus is easily accessible by tram. We have our own tram stop right at the centre of the site. The stop is called 'Nottingham Trent University'. Find more information on [discounted travel options for students](#) on the Nottingham Express Transit (NET) website.

## Bus

Nottingham City Transport (NCT) offer frequent routes across Nottingham, with buses running to all our campuses. Visit the [NCT website](#) for to access the [NCT Journey Planner](#).

# Accommodation overview

## Residences and key features

	Landlord	Distance from campus (miles)	Rooms	Type	Beds per flat / house	Bed type	Bed size	Bathroom	Mature Students (21+)	Free travel pass	Parking	Bike store	On-site management	Common room
<b>City Campus and surrounding area</b>														
Blenheim	UPP	0.8	177	Flats	4-7	Single	2'9" x 6'3"	En suite			✓	✓	✓	✓
Byron	UPP	On campus	559	Flats	4-10	Single	3' x 6'9"	En suite	✓				✓	
Gill Street North	UPP	On campus	446	Studios/Flats	1-8	Single	3' x 6'3"	En suite	✓				✓	
Gill Street South	UPP	On campus	352	Flats	5-11	Single	3' x 6'9"	En suite	✓				✓	
Hampden	UPP	On campus	168	Flats	6	Single	Various	Shared	✓				✓	
The Maltings	UPP	2.3	266	Flats	4-10	Various	Various	Shared	✓	✓	✓	✓	✓	✓
Meridian Court	UPP	2.0	250	Flats	2-10	Various	Various	Shared	✓	✓	✓	✓	✓	✓
Norton Court	UPP	1.1	312	Flats	6	Single	2'9" x 6'3"	En suite			✓	✓	✓	✓
Sandby	UPP	On campus	199	Residence	n/a	Single	3' x 6'3"	En suite	✓				✓	
Simpsons	UPP	1.1	226	Flats	2-12	Single	3' x 6'3"	En suite	✓		✓	✓	✓	
<b>Clifton Campus</b>														
College Drive	NTU	On campus	27	Houses	3-5	Single	3' x 6'3"	Shared	✓		✓			
New Hall	UPP	On campus	727	Studios/Flats	1-10	Single	3' x 6'9"	En suite	✓			✓	✓	
Peverell	UPP	On campus	722	Flats	6	Single	2'9" x 6'3"	En suite			✓	✓	✓	✓
<b>Brackenhurst Campus</b>														
Brackenhurst A-G	NTU	On campus	300	Flats	6	Various	Various	En suite	✓		✓	✓	✓	
Brackenhurst H-P	NTU	On campus	191	Flats	4-6	3/4 bed	4'0" x 6'3"	En suite	✓		✓	✓	✓	
<b>Mansfield hub</b>														
Layton Avenue	NTU	2.3	4	Rooms	4	Single	2'9" x 6'3"	Shared	✓		✓			
Grange Avenue	NTU	1.9	7	Rooms	7	Single	2'9" x 6'3"	Shared	✓		✓			

University Partnerships Programme (UPP) are affiliated with the University, and operate a number of residences for NTU.



Full details of the prices and facilities available at each site can be found at [ntu.ac.uk/accommodation](https://ntu.ac.uk/accommodation)



Nottingham Trent  
University

For more information visit:  
**[www.ntu.ac.uk/accommodation](http://www.ntu.ac.uk/accommodation)**  
Email: [accommodation@ntu.ac.uk](mailto:accommodation@ntu.ac.uk)  
Call: +44 (0)115 848 2894

**Follow us:**

 [ntustudentaccommodation](#)

 [@NTUStudentAccom](#)

 [ntuaccommodation](#)

Disclaimer: Nottingham Trent University and UPP reserve the right to alter residence charges at any time and to make alterations to any services advertised or provided. The information given in this guide was correct as of July 2025. Please note that whilst the University has taken all reasonable steps to ensure the accuracy of the content within this leaflet at the time of printing, the University reserves the right to remove, vary or amend the content of the leaflet at any time. For avoidance of doubt, the information provided within the content of this leaflet is for guidance purposes. © Nottingham Trent University and may not be reproduced or transmitted in any form, in whole or part, without the prior written consent of Nottingham Trent University.