



Nottingham Trent
University

Continuing professional development courses 2024-25

Short study opportunities for those
working in:

Construction management

Property and real estate management

Civil engineering



Contents

- 03 | Introduction
- 04 | Digital skills for construction
- 06 | Sustainability for construction
- 08 | Advanced courses
- 10 | Further short courses
- 10 | Consultancy
- 11 | Contacts

Arkwright Building, Nottingham Trent University



Nottingham Trent University (NTU) is not just about full-time degree courses. We believe in lifelong learning.

You might be just starting out and looking to enhance your CV or exploring how continuing professional development (CPD) can support your career progression. Whatever your motivation, NTU is the place to come.

We offer a range of short courses that start throughout the year specifically designed to fit around work and other commitments. Daytime, evening and Saturday courses are available. Some offer credits, others a CPD certificate and digital badge.

Courses take place on our City Campus. They are delivered by tutors with strong links to the construction, design and engineering industries who remain at the forefront of research. You can expect the highest quality teaching and access to industry-standard facilities.

We can also adapt our courses, tailoring them to a company's objectives.

Our aim is to respond positively to your training needs, with a flexible approach and content that matters today.

Read on, visit our website and start your learning journey with NTU.



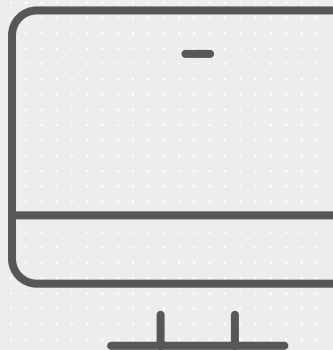
Any questions?

Email the short course team at cpdbe@ntu.ac.uk or call us on 0115 848 2813.

Digital skills for construction

Taught in small groups, these courses provide you with skills in computer software specifically relevant to the construction industry. Ideal for those new to the industry who want their CV to stand out, or those in need of a refresh, our tutors take a practical approach and make the content applicable to job roles today.

All take place at the City Campus in our specialist IT suites. Whilst you should be confident with using computers, no experience in the specific software is required.



Visit ntu.ac.uk/cpdb to find out more about courses, dates, fees and availability.

AutoCAD 2D

The ability to read, develop and interpret construction drawings is a fundamental skill for everyone involved in the construction industry.

On this course you'll learn how to effectively communicate design ideas within a project team and develop the key principles of graphical communication through the industry standard AutoCAD software.

It's useful for anyone in the construction sector who is looking to develop their overall knowledge and skills base in graphical communication.

Finite Element Modelling

On this course you will evaluate the application of the Finite Element Method (FEM) to obtain approximate solutions to complex structural problems.

It's useful for anyone in the construction sector who is looking to develop their overall knowledge and skills of structural problems and increase the contents of their analytical toolbox.

It's also useful for a range of infrastructure related sectors, including hydraulics and fluid flow.

You'll be able to integrate your knowledge of mathematics, science, information technology design and engineering practice to solve a range of real-life problems associated with finite element analysis.



Building Information Modelling (BIM)

This course will introduce and develop the core principles of Building Information Modelling (BIM) as used in the planning, design, construction and operation phases of a project using the AutoDesk Revit platform.

It's useful for anyone in the construction sector who's looking to develop their overall knowledge and skills in BIM for construction projects.

MS Excel

The ability to quickly undertake repetitive computations and analyse multifaceted 'what-if' design scenarios is a fundamental skill in the fast-paced construction industry.

It helps keep costs down and drives productivity.

This course will develop your software skills in Microsoft Excel to an advanced level, with a focus on its application to construction-related problem-solving.

Sustainability for construction

Responding to climate change and sustainable development is a key challenge - and opportunity – for the construction sector. In this fast changing field and evolving policy landscape keeping up-to-date with current thinking is essential. Companies are developing new strategies to tackle green issues and so, as a professional, it's important you have the knowledge and skills that employers are looking for.

These courses are aimed at those new to the construction industry as well as those looking to develop new skills in this area.



Visit ntu.ac.uk/cpdbe to find out more about courses, dates, fees and availability.

Level 5 Diploma in Retrofit Coordination and Risk Management

This course gives you the knowledge and skills you need to become a Retrofit Coordinator; a crucial new role required by PAS2035 standards. It is ideal for built environment professionals looking to further their career managing retrofit projects.

On completion of this qualification, you will be able to apply to be a registered Retrofit Coordinator via an application to a TrustMark approved Retrofit Coordinator Scheme Provider.

Sustainability in Construction

On this course you'll learn about sustainability in the context of the construction industry, its environmental impact and the opportunities for building a sustainable future.

It's useful for anyone in the construction sector who's looking to develop their overall knowledge of sustainability.

Building Control Inspections and Processes

On this course you'll learn about building control inspections and the regulations for commercial and residential buildings in England and Wales.

It's useful for anyone in the construction sector who is looking to develop their overall knowledge and understanding of this process.

Building Defects, Inspections and Survey Reports

This course brings together the practical and theoretical issues between building technology and building defects, as well as their causes, diagnosis and remedial actions.

It's useful for anyone in the construction sector who's looking to develop their overall knowledge and understanding of building failures, deterioration processes and assessment strategies.

Building Pathology

This course provides you with tools and strategies for assessing and improving the fabric of buildings. You will learn about the relationship between construction technology and building defects and the principles of inspections, problem solving and the pathology process.

You will investigate foundations and floors, drainage, walls and cladding, dampness and condensation, roofs, and the use of modern technology to take measurements

Energy Management

On this course you'll learn how energy efficiency and overall sustainability can be achieved by exploring the strategies being applied to the design and construction of buildings.

It's useful for anyone in the construction sector who's interested in climate change, thermal comfort and energy management technologies.

Heritage and Conservation

This course will guide you through selecting and using appropriate heritage materials in the repair, care, maintenance and upgrading of heritage buildings and assets.

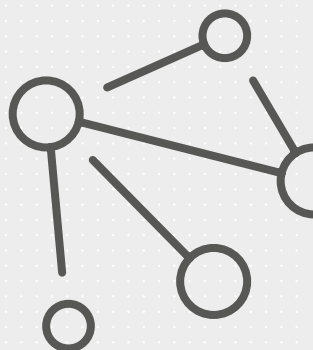
It's useful for anyone in the construction sector who's looking to gain a better understanding of the challenges posed by listed, historic and older buildings.



Advanced courses

Our postgraduate-level degree programme allows you to study an individual module as a stand-alone course. This gives you the opportunity to study flexibly (a half-day-per-week or on Saturdays) and choose subjects that suit your specific needs.

To attend, you should have a minimum of three years' professional experience and have the support of your employer to integrate your studies into your day-to-day work. If you wish to receive credit, you should also have a 2:2 honours degree in a related subject.



Courses start throughout the year. Visit ntu.ac.uk/cpdb to see a full list of available courses.



Civil and Structural Engineering

- Advanced Construction Materials
- Advanced Hydraulics and Hydrology
- Advanced Strength of Materials
- Advanced Structural Analysis
- Advanced Structural Engineering
- Analysis and Design of Surface Structures
- Condition Assessment and Health Monitoring of Civil Infrastructure
- Contemporary Themes in Structural Engineering
- Earthquake Engineering and Structural Dynamics
- Geophysical and Geotechnical Investigation and Design
- Managing Organisations and Projects in Civil Engineering
- Sustainable Transport Planning and Engineering



Construction Management

Advanced Construction Technology
 Collaborative Working
 Construction Business and Enterprise
 Introduction to Construction Technology and Management
 Law for Construction
 Lean Construction
 Planning and Managing Construction Work
 Procurement & Cost
 Project Initiation



Property and Real Estate Management

Building Pathology
 Conversion Adaptation and Care of Buildings
 Global Property Market Structures
 Heritage and Conservation
 Law for Surveyors
 Planning Practice
 Project and Contract Management
 Property and Construction Economics
 Real Estate Investment
 Real Estate Management and Agency
 Real Estate Valuation and Appraisal
 Statutory Control of Buildings



Further short courses



Our short course programme offers introductory and professional-level courses delivered by expert tutors and conveniently held at our City Campus.

We offer evening and weekend classes throughout the year, as well as daytime intensive courses during the summer. You can sign up as an individual and meet others who share your interests, or we can bespoke a course to your business needs.

Certificates and digital badges are offered to all those who successfully complete a course.

Courses include:

- CAD for beginners and improvers
- CAD for interior design
- Developing an eye for architectural photography
- From idea to prototype: rapid prototype techniques
- Product photography
- Psychology for designers
- Video-making for marketing and communication

Find out more at www.ntu.ac.uk/creativeshortcourses



Consultancy



Our industry knowledge and research experience can be a valuable resource for your organisation.

We provide businesses the opportunity to collaborate with our experts to help solve problems, test processes, create reports and provide an independent evaluation of products and services.

We've worked with companies of all shapes and sizes, from local SMEs to global brands. We can match your company with the right academic and technical experts to help with:

- design software
- test standards and design codes
- low energy and passive house design
- market research
- materials analysis and processes
- measurement collection and analysis
- project management
- retrofitting and energy efficiency
- structural engineering and quality control
- thermal effect analysis
- user experience research and analysis.



**If you have any
questions contact the
short course team:**

Telephone: **+44 (0)115 848 2813**

Email: **cpdbe@ntu.ac.uk**



Nottingham Trent
University



**School of Architecture, Design
and the Built Environment**

Nottingham Trent University
50 Shakespeare Street
Nottingham
NG1 4FQ, UK

This information can be made available in alternative formats.

Please note that whilst the University has taken all reasonable steps to ensure the accuracy of the content within this leaflet at the time of printing, the University reserves the right to remove, vary or amend the content of the leaflet at any time. For avoidance of doubt, the information provided within the content of this leaflet is for guidance purposes. © Nottingham Trent University and may not be reproduced or transmitted in any form in whole or in part without the prior written consent of Nottingham Trent University.