



Nottingham Trent
University

Clifton Campus

Landscape Management Plan

Date: January 2026

Version: 01
Date: 22/02/13

Author: ST

Version: 02
Date: 31/01/14

Author: CPH

Version: 03
Date: 30/01/15

Author: SR

Version: 04
Date: 29/01/16

Author: SB

Version: 05
Date: 19/01/17

Author: ZT

Version: 06
Date: 26/01/18

Version: 10
Date: 30/01/22

Author: SR

Version: 11
Date: 19/01/23

Author: JM

Version: 12
Date: 19/01/25

Author: JM

Version: 13
Date: 18/11/25

Author: JM

Author: KDM

Version: 07

Date: 28/01/19

Author: OH

Version: 08

Date: 29/01/20

Author: SR

Version: 09

Date: 02/01/21

Author: SR

Contents

1. Introduction and Background	6
1.1. Location	7
1.2. Current Use	7
1.3. Recent and Proposed Development	8
2. A Welcoming Place.....	11
2.1. Good and Safe Access	12
2.2. Signage	13
2.3. Equal Access for All.....	13
3. Health, Safety and Security.....	14
3.1. Appropriate Provision of Quality Facilities and Equipment	15
3.2. Safe Equipment and Facilities.....	16
3.3. Personal Security.....	18
3.4. Health and Safety	19
3.5. Accident and Incident Reporting	19
3.6. Dog Fouling	19
3.7. Working Hours	19
4. Cleanliness and Maintenance	20
4.1. Litter and Waste Management	21
4.2. Horticultural Maintenance	22
4.3. Tree Maintenance	22
4.4. Building and Infrastructure Maintenance	22
4.5. Equipment Maintenance	22
4.6. Maintenance Planning	23
5. Environmental Management	24
5.1. Managing Environmental Impacts	25
5.2. ISO 14001 Environmental Management System.....	25
5.3. Pesticides and Herbicides	25

5.4. Composting.....	26
5.5. Travel & Transport	26
5.6. Energy Consumption and Production.....	27
5.7. Staff Engagement	28
5.8. Climate Change and Adaptation	28
6. Biodiversity, Landscape and Heritage.....	29
6.1. Management of Natural Features, Wild Fauna, and Flora.....	30
6.2. Biodiversity Baselineing	30
6.3. Habitats on Campus	31
6.4. Rewilding Areas & Wildflower Meadow	31
6.5. Compensation Planting.....	32
6.6. Water Conservation	33
6.7. Planting Policy	34
6.8. Conservation of Landscape Features.....	34
6.9. Biodiversity Monitoring.....	36
7. Community Involvement.....	37
7.1. Community Events.....	38
7.2. Hedgehog Friendly Campus (HFC).....	39
7.3. Community Access	40
7.4. Room Hire.....	40
7.5. Sports Facilities.....	40
7.6. Foodshare Allotment.....	41
7.7. Educational Activities	42
8. Marketing and Communication	44
8.1. Marketing and Promotion	45
8.2. Communication Channels	45
8.3. Educational and Interpretational Information	45
9. Management.....	46
9.1. Management Structure.....	47

9.2. Project Funding..... 47

9.3. Management Priorities 47

Appendices 48

Appendix A – Landscape Operations Service Level Agreement 48

Appendix B – Implementation Plan 50

Appendix C – Habitat and Species Conservation Management Plan 52

Appendix D – Clifton Campus Habitat Map 57



Section 1: Introduction and Background

1. Introduction and Background

1.1. Location

Clifton Campus covers 32 hectares on the south bank of the River Trent, approximately four miles southwest of Nottingham City Centre along the A453 (Clifton Lane). The campus is easily accessible by bus, tram, bike, car, or on foot, with the main entrance located on Clifton Lane.

The award-winning Uni 4 bus service connects Clifton Campus to Nottingham, with departures from NTU City Campus every 7–10 minutes during term time, Monday to Friday. During university holidays, the South Notts 1 bus service provides access, stopping just outside the campus on the A453. The campus is also served by the Nottingham Express Transit (NET) tram network. Further details on tram access are provided in Section 5.6.



Figure 1 - 2023 Plan of Clifton Campus

1.2. Current Use

Clifton Campus is home to NTU Sport, the School of Science and Technology and the Nottingham Institute of Education.

Clifton Campus hosts lecture theatres, General Purpose Teaching Rooms, laboratories, IT suites, a library, and a sports centre, all equipped to support the diverse courses offered to around 8,000 students. The campus also includes a health centre, two halls of residence, a student union, sports pitches, shops, and cafes, making it a self-sufficient environment.

1.3. Recent and Proposed Development

Under Nottingham Trent University's Estates Development and Contractor Control Operational Procedure, all new buildings are assessed and, where applicable, must achieve a BREEAM Excellent rating. Major refurbishment projects are also evaluated for environmental performance and certified using the RICS SKA Rating. Recent developments have incorporated green roofs, living walls, and sustainable drainage systems, enhancing biodiversity and supporting urban wildlife while contributing to climate resilience.

NTU is a proud Client Partner of the Considerate Constructors Scheme (CCS), actively working to reduce the environmental and social impacts of construction. The partnership promotes excellence in site appearance, community engagement, environmental protection, safety, and workforce wellbeing.

Campus redevelopment began in 2014 with the Heart of Campus project, adding the Pavilion and Teaching and Learning Building. Further developments include ISTECC, Engineering, MTIF, and Health and Allied Professions buildings:

- **Heart of Campus Regeneration (2014–2016):** Pavilion and Teaching and Learning Building form the campus centre, with landscaping linking the NTU Sports Centre, Clubhouse, and Pavilion gardens. A new Green Zone was introduced, free from smoking, unauthorised traffic, and parked bicycles.
- **A453 Widening (2015):** Road widening resulted in the loss of an ancient hedgerow and boundary trees. Compensation planting along the eastern boundary used British native species to screen noise and visual pollution and enhance habitat diversity.
- **Interdisciplinary Science and Technology Centre (ISTECC) (2017):** Provides labs for chemistry, physics, biosciences, and computing, plus a humanoid robot arena. A rooftop beehive is monitored remotely using accelerometers for research.
- **Engineering Building (2019–2020):** Offers flexible learning spaces and specialist tools for robotics, simulation, cybersecurity, and automation research, plus facilities for commercial research and consultancy.

- **Medical Technologies Innovation Facility (MTIF) (2019–2021):** Focuses on early-stage medical technology research, enabling collaboration between organisations, clinicians, and researchers.
- **Health & Allied Professions Centre (2020–2022):** A 34,000 sq ft facility with mock hospital wards, consultation rooms, and specialist equipment, supporting careers in nursing, paramedicine, and healthcare.



Figure 2 - Aerial view of the Pavilion, Learning and Teaching Building and the Plaza, the Heart of Campus



Figure 3 - A453 compensation planting



Figure 5 - MTIF building.



Figure 6 - Health & Allied Professions Centre



Section 2: A Welcoming Place

2. A Welcoming Place

2.1. Good and Safe Access

The award-winning Uni 4 bus service runs throughout term time, taking around 25 minutes between City and Clifton campuses via Nottingham City Centre and the train station. Double-decker buses stop at both campuses.

A mainly traffic-free cycle route connects the campuses in approximately 30 minutes. More information is available on NTU's Sustainability webpages. The NTU Cycle Hub at City Campus offers bike hire for £49 per year for travel between campuses, accommodation, and the city.

NTU's Clifton Travel Plan and Nottinghamshire County Council's cycle strategy anticipate increased non-motorised travel. To support this, a secure cycle compound with 30 spaces was added in December 2019.

Access guidance:

- All students, visitors, and deliveries use the Main Gate and report to the gatehouse.
- South Gate is for staff only, with parking charged daily via staff cards.
- Central Approach on Clifton Lane is for pedestrians and cyclists only.

Parking:

- Students require an annual permit; visitors receive a free day permit.
- Cyclists enter via the pedestrianised entrance and access on-campus cycle storage.
- Both car parks are within walking distance of campus facilities.

Access across the site meets BS 8300, ensuring buildings and approaches meet the needs of people with disabilities. Features include level or ramped access, dropped kerbs, tactile paving at crossings, and wheelchair-friendly pathways. All new developments consider Disability Discrimination Act requirements.



Figure 7 - Typical cycle compound on Clifton

2.2. Signage

Standardised signage featuring the NTU logo and typeface is displayed across the campus. In 2020, a comprehensive update rebranded external signs, monoliths, and windows to reflect the University's identity.

Information boards provide building details and security contacts, while new copper boards highlight the Green Zone. The Clifton Nature Trail, an informal path along the campus perimeter, includes boards sharing insights into ecology, history, and wildlife. These boards were updated in 2025 to feature species recorded on campus through the iNaturalist biodiversity monitoring project, creating an engaging and educational experience for visitors.

2.3. Equal Access for All

Clifton Campus serves students, academics, and the local community. The Clifton Sports Hub is the main centre for community use, offering a range of amenities (see **Section 7.5**).

The campus encourages public involvement through Open Dome astronomy events, Open Days, and sporting activities. Community groups and schools can also use the allotment and outdoor classroom behind Peverell Hall reception for activity sessions (see **Section 7.6**).



Section 3: Health, Safety and Security

3. Health, Safety and Security

3.1. Appropriate Provision of Quality Facilities and Equipment

NTU ensures Clifton Campus remains a safe and welcoming environment for all users. The Estates Department conducts regular inspections to identify and address potential issues, supported by a maintenance plan (see **Appendix A**). Staff and students can report problems via the Estates Helpdesk on MyHub, while visitors can contact Reception Officers or use the numbers displayed on campus information boards. Reported issues are prioritised and resolved promptly.

The campus offers well-maintained indoor and outdoor green spaces, managed by landscaping, maintenance, and sports teams. Dining outlets provide a diverse range of freshly prepared meals, including healthy options and great-value breakfasts. The NTU Catering Team works with Sustainability and Procurement teams to ensure ethical, social, and environmental considerations in food sourcing.

Outdoor seating is available across the campus, including the Plaza, Student Union, and the outdoor classroom at the allotment site. Public toilets are located throughout the campus. Security staff, all trained first aiders, are available 24/7 and can be contacted on **0115 848 6600**, displayed on campus information boards.



Figure 8 - Outdoor seating space on the Plaza

3.2. Safe Equipment and Facilities

Built features within the grounds are regularly inspected, and appropriate actions are taken as needed. All grounds maintenance equipment undergoes annual safety checks. Landscape Services also uses the Reactec Hand Arm Vibration (HAV) safety system to protect staff during operations.

As part of NTU's Hedgehog Friendly Campus initiative, all strimmers and mowers were labelled in 2020 to remind users to check for hedgehogs and other wildlife before use (see Section 7.2).

Tree safety is actively managed. The Landscape Services Manager monitors external threats such as tree diseases and takes pre-emptive action. External consultants, FPCR Environment and Design Ltd, survey all tree stock every three years, including woodlands, to assess health and identify dead, dying, or dangerous trees. The latest survey was completed in December 2022.

Water safety measures include:

- Risk assessments for all water bodies
- Dense native vegetation around the three balancing ponds south of Peverell Hall to discourage public access, while allowing maintenance and research access
- Gently sloping, solid edges to comply with safety guidelines and enable wildlife escape
- Guardrails around the swale at New Hall Student Village to prevent access
- Drainage outlets to maintain safe water depth
- Regular checks of guardrails, outlets, and barriers are part of the maintenance regime.



Figure 9 - Landscape Services equipment labelled with Hedgehog warning sticker.



Figure 10 - One of the balancing ponds located by Peverell Halls

3.3. Personal Security

Security at Clifton Campus operates 24/7, supported by a comprehensive CCTV network providing full site coverage. Footage is monitored by the Security Team to ensure safety for all users.

Emergency Security Points (ESPs) were installed in response to staff and student feedback and are located at:

- ESP8 Observatory
- ESP9 Loop Road (Rear of Library)
- ESP10 ANT

Each ESP includes an intercom, camera, and CCTV system. Pressing the button connects directly to the Security Team, who can assess the situation, provide advice, attend the scene, or contact emergency services.

The Landscape Services Team works with Security to maintain clear CCTV sightlines and safe footpaths. Street lighting ensures visibility along roads and paths, and hedges near these routes are maintained at a maximum height of 1.5m for security and maintenance purposes. All crime incidents are recorded, and annual statistics are compiled to review progress and refine security policies.



Figure 11 - The Pavilion and Plaza are suitably lit for safety and aesthetic.

3.4. Health and Safety

The Landscape Services Manager ensures safe working practices within the team. Risk assessments and procedures are regularly reviewed, and COSHH assessments are documented and updated as needed. Staff receive training on chainsaw use, tree climbing, fire safety, and first aid, and are provided with appropriate protective clothing and equipment. Information leaflets and risk assessments are available to support safe operations.

The University's Health, Safety, and Wellbeing Team maintains comprehensive policies and procedures to minimise risks and ensure the grounds can be used safely.

3.5. Accident and Incident Reporting

All accidents and near misses are reported using a standard procedure in compliance with Health and Safety at Work legislation. Reports are monitored centrally, and investigations are initiated when necessary.

3.6. Dog Fouling

Dogs are not encouraged on campus due to outdoor sports facilities, but members of the public often walk dogs along the Nature Trail. To manage this:

- Dog waste bins are installed at the start and end of the trail
- Interpretation boards include reminders for responsible behaviour
- Additional signage reinforces the requirement to clean up after dogs

3.7. Working Hours

The Estates Department works with the Timetabling Department to avoid disruption during exams, sports events, and open days. Any campus works are communicated via digital Estates Works Notifications. Updates on developments are available on the [Campus Developments](#) webpage.



Section 4: Cleanliness and Maintenance

4. Cleanliness and Maintenance

4.1. Litter and Waste Management

Maintaining a clean and attractive campus is a priority for NTU. The Landscape Services Team manages the grounds, while the Facilities Team empties external litter and recycling bins daily, conducts litter picks, and sweeps leaves as needed. Entrances are cleaned daily, hard surfaces swept each morning, and sports pitches maintained daily. Car parks are cleaned on an ad-hoc basis, with priority given to high-use areas on Monday mornings. Since 2019, litter picks have extended to the roadside along the A453, supporting a local Nottingham Clean Champion.

To encourage responsible disposal, litter bins and recycling stations are located throughout the site. In 2021, all external bins were replaced for consistency. Clothing recycling banks at New Hall and Peverell Halls allow donations of clothes, footwear, and books to the British Heart Foundation (BHF). NTU promotes these locations in partnership with UPP and NTSU, a collaboration recognised with the Retail Partner Award at the BHF Hero Awards in 2019.



Figure 12 - Promoting British Heart Foundation donations to fellow students.

The Big Clear Out initiative, launched by NTU Sustainability with UPP and NTSU, collects unwanted items during student move-out periods. Between 2022 and 2024, this project diverted approximately 14,000 kg of waste from landfill, benefiting charities and reducing environmental impact.

NTU operates a fully integrated Environmental Management System (EMS) (see **Section 5**), supported by waste guides on the Sustainability webpages. In December 2024, new signage was introduced on internal bins to clarify waste acceptance. NTU also promotes Warp It, an online portal for redistributing unwanted furniture and equipment. Since its launch in 2018, Warp It has saved £336,354, diverted 41,002 kg of waste from landfill, and improved resource efficiency.

4.2. Horticultural Maintenance

The Landscape Services Team maintains the grounds and enhances the campus's appearance through seasonal priorities such as leaf clearance in autumn and mowing amenity spaces and sports pitches in summer. Alongside an annual programme of short-term tasks, a long-term plan addresses more complex works, including de-silting balancing ponds and replanting designated areas.

To date, over 1.2 million bulbs and 8,000 m² of wildflower meadow have been planted to improve biodiversity and visual appeal.

4.3. Tree Maintenance

FPCR conducts a comprehensive tree survey every three years, mapping all trees and groups with unique codes linked to a database detailing species and condition. This system enables proactive maintenance and identifies trees requiring attention. The Landscape Services Team uses this database for ongoing management and responds to reactive issues such as storm damage. The most recent survey was completed in December 2022.

4.4. Building and Infrastructure Maintenance

Clifton Campus features a diverse range of buildings for teaching, research, administration, and residential use. The Estates Department ensures all buildings are maintained to a high standard, supported by an on-site maintenance team.

4.5. Equipment Maintenance

A structured inspection programme ensures compliance with safety regulations:

- **Work Equipment:** Inspected under PUWER (1998)
- **Electrical Appliances:** PAT tested in line with the Health and Safety at Work Act (1974)
- **Tree Climbing Equipment:** Inspected every six months under LOLER (1998)

NTU vehicles are managed by Campus Services, ensuring servicing and testing as required. Specialist vehicles, such as tractors, are owned or leased, with maintenance included in lease agreements.

4.6. Maintenance Planning

The Landscape Services Team adapts to changing conditions, undertaking tasks such as gritting roads during icy weather and clearing debris after storms. Daily objectives are set by the Landscape Services Manager, with health and safety tasks prioritised.

The team follows a tree replacement policy, planting at least one new tree for every one removed. Cyclical maintenance includes shrub bed care, summer bedding, mowing, and strimming. A sample planning document is provided in **Appendix A**.



Section 5: Environmental Management

5. Environmental Management

5.1. Managing Environmental Impacts

5.1.1. Policies and Pledges

NTU is committed to reducing its environmental impact. The Environmental Policy is publicly available on the NTU Sustainability webpages. As of December 2023, NTU is rated a first-class university in the People & Planet League and ranked 2nd in the University of Indonesia Green Metric World University Ranking.

NTU has pledged to achieve Net Zero Carbon emissions by 2040. This commitment is now a strategic KPI, with milestones set for 2025 and 2030. The pledge covers emissions from energy use across the estate and scope 3 emissions from activities beyond direct control.

5.1.2. Staff Training

The Sustainability Team delivers monthly Sustainability Awareness at NTU sessions for all staff, including new starters. Environmental Awareness and Compliance Training is also provided for Estates, Catering, and Cleaning Services staff. These sessions help colleagues understand NTU's sustainability goals, their responsibilities, and ways to engage with related projects and events. Environmental Compliance training is also available for NTU staff as a suite of online modules through Thrive.

5.2. ISO 14001 Environmental Management System

NTU's Environmental Management System was established through the EcoCampus scheme and is aligned with the ISO 14001 standard. Certification was first achieved in November 2012. ISO 14001 provides a framework for identifying and managing environmental aspects, improving performance, and ensuring legal compliance. This certification confirms that NTU has robust systems in place to manage environmental impacts and meet its sustainability objectives.

5.3. Pesticides and Herbicides

Integrated Pest Management is used across the estate to support landscape maintenance through environmentally responsible practices. Pesticide use is minimal and applied only when necessary, always in line with legislative guidance. Cultural and biological controls are prioritised within maintenance schedules. Herbicides are used for weed control in specific areas, along with turf fungicides and insecticides where appropriate. All grounds

staff are fully trained and certified in the safe application of herbicides and hold the necessary certifications.

5.4. Composting

NTU minimises environmental impact by using peat-free compost, much of which is produced on-site. Horticultural waste is recycled into compost or mulch, with woody material chipped for mulching and softer material, such as leaves, composted to enrich soil. A dedicated composting facility at Clifton Campus processes this material using a chipper and composting machine. Waste is turned regularly and matured for at least six months before reuse in woodland areas. The facility is securely fenced, Environment Agency licensed, and all compost is applied across campus grounds, supporting sustainable landscaping.



Figure 13 - Composting facility on campus converts pruning to a rich compost.

5.5. Travel & Transport

5.5.1. NCT Buses

The award-winning Uni 4 bus service connects City and Clifton Campuses every 7–10 minutes during term time. In 2019, the fleet was upgraded to Euro VI engines, reducing emissions significantly. A dedicated bus stop at the Main Gate improves access, and the No. 1 service also operates daily, stopping near campus.

5.5.2. NET Tram

Rivergreen tram stop is a 10-minute walk from campus, with direct services from City Campus to Rivergreen in 22 minutes. NTU staff and students benefit from discounted Park & Ride tickets (£1.50 return), easing parking demand and supporting sustainable travel.

5.5.3. Cycle Provisions

NTU promotes cycling through its Cycle Hub, offering infrastructure improvements, events, and a bike hire scheme. Over 200 hybrid bikes are available for £49 per academic year (plus deposit), including lights, locks, secure storage, and maintenance support. Staff can hire e-bikes or join the Cycle to Work scheme for tax-free bike purchases. Facilities include 465 secure cycle spaces, lockers, showers, and CCTV-monitored shelters. Up-to-date maps and advice are available on NTU's Sustainability webpages, and staff can join a dedicated MS Teams Cycling Forum.

5.5.4. E Scooters

NTU supports Nottingham City Council's e-scooter trial, offering a low-emission option for short journeys. The scheme, extended to May 2026, relaunched in March 2025 with Tier-Dott operating 1,300 scooters across the city.

5.5.5. Electric Vehicles

NTU operates electric vehicles for maintenance and landscaping, including John Deere electric mowers. There are 32 EV charging bays across City, Clifton, and Brackenhurst Campuses, five of which are accessible spaces for blue badge holders.

5.6. Energy Consumption and Production

5.6.1. Solar Photovoltaic Panels (PV)

Clifton Campus hosts PV installations on several buildings, including the Library, Rosalind Franklin, Pavilion, Club House, Engineering Building, MTIF, HAP, and ISTEAC. In 2023/24, these generated 205,653 kWh of renewable energy. New Hall student accommodation also uses solar thermal panels to provide hot water.

5.6.2. Efficient Cooling System

The Clifton Data Centre uses an Evaporative Cooling System, maintaining stable temperature and humidity while reducing carbon impact. This system cuts annual running

costs by 90%, with up to 40% of its energy supplied by rooftop PV panels, significantly lowering emissions.

5.6.3. Combined Heat and Power (CHP) Plant

Two CHP units at Clifton Campus, fuelled by natural gas, provide heating to multiple buildings. NTU sources electricity from a green energy provider and continues to invest in projects to expand renewable energy use across the estate.

5.7. Staff Engagement

5.7.1. Green Rewards

Launched in 2019, Green Rewards encourages staff and students to take actions that reduce environmental impact, support the community, and improve wellbeing. As of January 2025, 4,731 participants have completed 426,906 actions, avoiding 808,549 kg of CO₂.

5.7.2. Sustainability Representatives

Seventy staff members act as departmental Sustainability Representatives, liaising with the Sustainability Team to share ideas and report issues. Termly meetings feature guest speakers, and a dedicated MS Teams network supports ongoing discussion.

5.7.3. Staff Training

Monthly sustainability awareness sessions, including induction training for new starters, help staff understand NTU's sustainability commitments and identify ways to contribute to projects and events.

5.8. Climate Change and Adaptation

NTU recognises its environmental impact and is committed to reducing contributions to climate change while adapting to its effects through integrated landscape management. Landscape Services have phased out peat-based compost and are trialling sustainable alternatives such as bark mulch to protect peatlands and improve soil health. Planting strategies are regularly reviewed to favour drought-tolerant and fast-establishing species, ensuring campus landscapes remain resilient under changing climate conditions. These measures support NTU's wider sustainability objectives and strengthen the campus's ability to withstand climate-related challenges.



Section 6: Biodiversity, Landscape and Heritage

6. Biodiversity, Landscape and Heritage

6.1. Management of Natural Features, Wild Fauna, and Flora

Clifton Campus is a 32-hectare site on the south bank of the river Trent, situated approximately four miles southwest of Nottingham City Centre. The Campus is surrounded by priority habitat deciduous woodland, which includes species such as oak, ash, and field maple. The woodland also provides connectivity for local biodiversity to the Clifton Grove Local Nature Reserve (LNR) located on the North-Western campus boundary, and the Site of Special Scientific Interest (SSSI) Holme Pitt located 0.5 miles South-West of the campus. The woodlands serve as a foraging and connective habitat for many species, including protected species. Species sightings include sparrowhawk (*Accipiter nisus*), muntjac deer (*Muntiacus reevesi*), tawny owls (*Strix aluco*), and fox (*Vulpes vulpes*). Both green woodpeckers (*Picus viridis*) and the red-listed lesser spotted woodpeckers (*Dryobates minor*) have been recorded in Holme Pit SSSI.

NTU employs a range of techniques to maximise biodiversity and create varied habitats across its campuses. Woodland areas are managed to encourage native ground flora, while wood and stone piles are left to provide shelter for species such as hedgehogs and toads. The woodlands near the Observatory feature snowdrops, bluebells, and primroses, transplanted by students from other campus areas during development works.

Bug hotels are installed as part of development compensation and student engagement projects, supporting pollinators and other beneficial insects, with research undertaken to assess their effectiveness. Bird and bat boxes are fitted to trees, and where safe, dead trees are retained to provide habitats. High-cut stumps encourage wood-boring beetles, and some are sculpted to hold water, creating additional ecological benefits. NTU is proud to hold Platinum Hedgehog Friendly Campus accreditation across City, Clifton, and Brackenhurst campuses. These initiatives demonstrate NTU's commitment to enhancing biodiversity and maintaining a healthy, resilient landscape.

6.2. Biodiversity Baseline

A Preliminary Ecological Appraisal (PEA) and baseline Biodiversity Impact Assessment (BIA) of Clifton Campus, were undertaken during April 2024 and May 2024 to create a baseline of the biodiversity on Site and inform ongoing management. The baseline biodiversity value of the Site comprises 130.10 habitat units and 13.75 hedgerow units. The most

valuable habitat on Site in terms of biodiversity units is the other woodland; broadleaved; in total this habitat contributes 58.52 habitat units. Other notably valuable habitats on Site included the urban trees which contribute 38.93 habitat units.



Figure 14 - Undergraduate students constructing and installing mini-beast hotels.

6.3. Habitats on Campus

NTU maintains a variety of habitats that support biodiversity and provide refuge for wildlife across the campus.

- **The Old Marl Pit (The Dell):** A unique, undisturbed woodland feature on the eastern site, managed exclusively for biodiversity. Species recorded include Green and Lesser Spotted Woodpeckers and foxes.
- **Balancing Ponds:** Three aerated ponds south of Peverell Hall create ideal conditions for aquatic invertebrates and attract wildlife such as herons to the margins.

6.4. Rewilding Areas & Wildflower Meadow

NTU is reducing amenity grassland and creating rewilded areas and wildflower meadows to enhance biodiversity and support pollinators. These areas are managed to encourage species diversity and minimise harm to wildlife.

Management Approach:

- Single annual cut in late summer allows wildflowers to mature and set seed.
- Cuttings are removed to maintain low-fertility soils, promoting diverse plant species.
- Wildlife checks are carried out before mowing; “Check for hedgehogs” labels are displayed on all equipment.

Wildflower Planting:

- Over 1.2 million bulbs planted across campus, including 600,000 in the south.
- More than 8,000 m² of wildflower meadow established with a mix of native and non-native species for visual impact and ecological benefit.

NTU received the Bees’ Needs Champion Award (2019) for creating a bee-friendly environment through planting design and maintenance practices.

6.5. Compensation Planting

NTU undertakes compensation planting to offset vegetation loss during campus development and maintain biodiversity. A detailed plan identifies existing compensation planting areas to prevent removal during future regeneration and highlights potential sites for expansion.

- Purpose: Maintain biodiversity and ecological balance during development.
- Current Status: Existing compensation planting mapped and protected.
- Future Plans: Areas marked in red on the plan indicate potential sites for additional planting.



Figure 15 - Wildflower meadow and A453 compensation planting



Figure 16 - Compensation planting plan as of January 2021

6.6. Water Conservation

NTU incorporates water-saving practices into landscape management to reduce environmental impact while maintaining campus aesthetics.

Summer Bedding:

- Water-retaining granules or gel used in planting beds to minimise irrigation needs.
- Beds mulched to reduce evaporation, suppress weeds, regulate soil temperature, and improve soil structure.

Sustainable Drainage:

- The swale at New Hall acts as a flood attenuation basin, collecting surface runoff and allowing infiltration into the water table.
- Balancing ponds are naturally replenished with rainwater from Peverell Hall accommodation.
- The MUSF development includes a Bioswale as part of the development Biodiversity Net Gain requirements.



Figure 17 - The Swale at New Hall student accommodation

6.7. Planting Policy

NTU prioritises native species in landscaping to promote biodiversity and provide habitats for local wildlife. The Landscape Services Team focuses on planting nectar- and berry-producing species of local provenance, while carefully selected non-native plants are used only where they enhance biodiversity. Tree planting and woodland or hedgerow replacements primarily feature locally native species such as Ash, Field Maple, and Oak. The team actively monitors tree health, particularly for diseases like Ash dieback, and follows best practice procedures to manage and mitigate risks.

A £100,000 glasshouse facility at Brackenhurst Campus supports sustainable landscaping by producing over 30,000 seasonal bedding plants annually from seeds and plugs, meeting most of NTU's soft landscaping needs. Additional plants are sourced from external nurseries only when necessary.

6.8. Conservation of Landscape Features

Although Clifton Campus contains no listed features, its setting is sensitive to adjacent heritage areas. Development considers the following:

Nearby Heritage Sites:

- Clifton Village and Clifton Grove Conservation Areas (22 listed buildings including Clifton Hall and Icehouse).
- Closest listed buildings: The Old Rectory and School House near the Observatory.
- Holme Pit SSSI (860m SW) – nationally important for species-rich marsh, reed swamp, and open water.

Local sites:

- Clifton Grove, Clifton Woods, and Holme Pit Pond – part of the River Trent Wildlife Corridor.
- Historic Features on Campus:
 - Clifton Grove: Historic elm avenue (now lost to Dutch elm disease) once linked Clifton Hall to the River Trent.
 - Old Marl Pit (The Dell): Originating c.1700, shown on 1883 OS map; retained and managed for biodiversity.
 - Ancient Hedgerow: Removed during A453 widening (2013); compensation planting completed in 2014.

Tree Preservation:

- Ten mature Turkey Oaks (*Quercus cerris*) over 20m tall near the cricket pitch, protected by TPO for historical and ecological value. Believed to commemorate Clifton soldiers from the early 19th century.



Figure 18 - Clifton Turkey Oak trees

6.9. Biodiversity Monitoring

NTU engages staff, students, and visitors in biodiversity monitoring through the iNaturalist Campus Biodiversity Network Project. Citizen scientists have recorded over 720 species across NTU campuses, creating research-quality data that informs conservation work and supports ecological research.

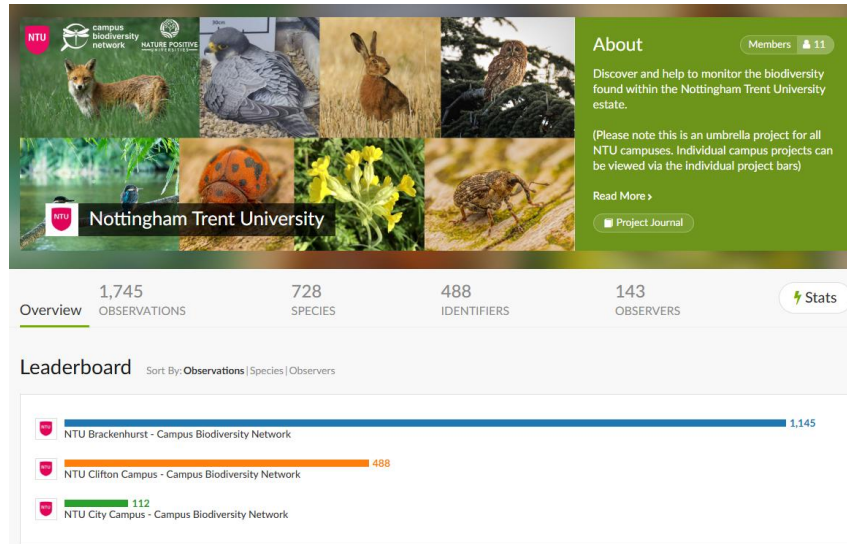


Figure 19 – iNaturalist Biodiversity Monitoring Project



Section 7: Community Involvement

7. Community Involvement

7.1. Community Events

NTU's Clifton Campus is an inclusive space that welcomes students, staff, local schools, community groups, and the public for events and activities throughout the year, alongside ongoing access to the Nature Trail. These initiatives foster connection, environmental stewardship, and community engagement.

Collaborative Activities:

- Sustainability Team and Landscape Services create opportunities for staff, students, and community members to enhance the campus environment.
- Events include bulb and tree planting, woodchip application on the Nature Trail, and garden craft activities.

Team Challenges:

- Organised by CenSCE at the Foodshare Allotment Project.
- Since 2020: 11 groups, 87 colleagues completed tasks such as building raised beds and gardening.

Youth Engagement:

- Programmes for disadvantaged young people (ages 7–18) through NTU Sport, volunteering, and the Progression Programme.
- Activities include growing produce for local charities and food banks.

Community Partnerships:

- Collaborations with local schools, Nottingham Women's Institute, Clifton residents, and groups such as Spiral bereavement support.
- Activities include planting, harvesting, and sustainability-themed crafts.

Open Dome Astronomy Events:

- Regular public events at the Optical Observatory, featuring a 20-inch telescope, solar scope, and smaller telescopes.
- Includes expert talks on astronomy topics and Q&A sessions with scientists.
- Advertised locally and via NTU channels; open to staff, students, and the public.

Seminars and Open Days:

- One-day seminars on specialist subjects open to professionals and the public.
- Comprehensive Open Day programme widely advertised, with temporary signage to facilitate access.



7.2. Hedgehog Friendly Campus (HFC)

Since 2020, NTU has actively participated in the Hedgehog Friendly Campus initiative, engaging staff and students in actions to create a safer environment for hedgehogs. This commitment earned NTU the Platinum Award in 2024, recognising its leadership in hedgehog conservation.

Key Achievements:

- **Awareness Campaigns:** Stickers added to all strimmers and mowers to reduce harm (see **Section 3.2**).
- **Events and Education:** Participation in Hedgehog Awareness Week, hosting webinars and social media campaigns.
- **Surveys and Audits:** Regular hazard audits and mammal tunnel surveys conducted with staff and student involvement.
- **Training:** Landscaping Services Team completed Hedgehog Friendly Grounds training in 2022 to improve habitat management.

This initiative demonstrates NTU's commitment to biodiversity while fostering community engagement and environmental stewardship.



Figure 21 - Student setting up a Hedgehog survey tunnel on Campus.

7.3. Community Access

Information about the campus and its natural features is provided via upgraded information boards along the Nature Trail. These boards, updated in 2025, display details of key points of interest, contact numbers, and a brief Code of Conduct. The refreshed design improves accessibility and engagement for visitors, reinforcing NTU's commitment to community involvement and environmental education.

7.4. Room Hire

Clifton Campus offers a wide range of event spaces suitable for everything from small meetings to large conferences. NTU provides tailored catering options, from light refreshments to full meals, and on-site event coordinators are available to support planning and delivery, ensuring a professional and seamless experience.

7.5. Sports Facilities

NTU Sport provides high-quality facilities for students, staff, and the local community, supporting participation from recreational users to elite athletes. Clifton Campus hosts a modern sports complex designed to promote health, wellbeing, and community engagement.

Indoor Facilities:

- Clifton Sports Hub includes a multi-station fitness suite, high-performance gym, dance studio, squash courts, and sports hall.
- Specialist areas for strength, conditioning, and athlete support.

Outdoor Facilities:

- Five grass pitches for football, rugby union, lacrosse, and American football, plus a cricket pitch and pavilion.
- State-of-the-art 3G pitch and indoor tennis centre.

Innovation & Sustainability:

- In 2024, NTU installed the UK's first carbon-neutral dry turf hockey pitch, identical to those used at the Paris Olympics and LA 2028.
- Saves 73 tonnes of CO₂ and significantly reduces water use, aligning with the International Hockey Federation's sustainability vision.

Community Access & Partnerships:

- Hosts local teams such as Nottingham Forest Women and Notts County FC, and national/international events including Vitality Nations Cup netball and Nottingham Nature Valley Open tennis.
- Clifton Cricket Club shares the pitch under a historic agreement, engaging local schools in coaching.
- Facilities regularly booked by organisations including England Hockey, Badminton England, British Gymnastics, and the Wheelchair Football Association.

Future Development:

- A new Multi-Use Sports Facility is under construction, and due to open in 2026 to meet growing demand.

7.6. Foodshare Allotment

Established in 2014/15, the Foodshare project is located in the gardens of Peverell Halls and is a joint initiative between NTU, UPP Ltd, NTSU, and Nourish Associates. The project teaches students and staff how to grow food sustainably. Volunteers can sample produce and take some home, while at least half of the harvest is donated to local charities such as Guru Nanak's Mission and Windmill Community Gardens, where food supports community meals and creative activities.

The allotment also hosts seasonal events such as pumpkin carving and wreath making and is used by Forest Schools and degree courses for practical learning. The site is currently under review to determine future ownership and plans for its continued use, ensuring its long-term contribution to sustainability and community engagement.



Figure 22 - Allotment volunteers harvest organic produce weekly.

7.7. Educational Activities

The Foodshare allotment includes an Outdoor Classroom, built in 2017 with £8,000 funding from Tesco’s Bags of Help scheme. This circular space, featuring pergolas, log benches, and a central chair, is surrounded by wildflowers and fruit trees and is available for social or teaching use. It has hosted children’s activity sessions for local schools and community groups.

Clifton Campus serves as a teaching resource for the Nottingham Institute of Education, particularly for students training to work with children. Embracing the Forest School approach, students explore child-led outdoor learning opportunities, mainly in woodland

areas on the east side of campus. These sessions can lead to AIM Awards accreditation at Level 1 or 2, providing an additional qualification upon graduation.

Three to four times a year, local primary school classes visit Clifton Campus for outdoor learning experiences, planned and delivered by BA Primary students. Activities include mini science sessions at the balancing pond, woodland, and outdoor classroom. Interest from external schools and colleges continues to grow, making this initiative a popular and impactful part of NTU's educational offer.



Figure 23 - Outdoor classroom with features for teaching and wildlife



Figure 24 - Forest school teaching session with undergraduate students



Section 8: Marketing and Communication

8. Marketing and Communication

8.1. Marketing and Promotion

NTU is increasing efforts to raise awareness of City Campus facilities available for public use. The NTU website provides detailed information on campus amenities and green spaces, while the news section and Sustainability webpages share updates on events and opportunities, keeping the community informed and engaged.

8.2. Communication Channels

Internal communication includes the MyNTU dashboard, which provides daily updates for staff, and the University Calendar for students and staff. Green Flag status is promoted through events such as Sustainability Awareness sessions, Sustainability in Practice tours, and Welcome Week activities. It is also featured on NTU Sustainability webpages and Instagram.

The Sustainability Team works closely with staff and student communications teams to ensure key messages and opportunities are widely shared. The team manages its own social media accounts, supported by other NTU channels. NTU Estates also uses Instagram and dedicated web pages to share updates and notify staff and students of campus developments.

8.3. Educational and Interpretational Information

NTU's Sustainability webpages feature a dedicated section for Clifton Campus, where staff, students, and members of the public can access this Landscape Management Plan (LMP) and explore the numerous opportunities available on campus.



Section 9: Management

9. Management

9.1. Management Structure

City Campus is managed by the Landscape Services Team under the Estates Department. Working closely with the Sustainability Team, they share best practice guidance on environmental management across the University.

The Director of Estates, supported by the University Executive Team, oversees implementation of the Environmental Policy. The Landscape Services Team holds regular meetings with academic staff to align activities with teaching projects. This Landscape Management Plan is reviewed annually by the Sustainability Team and Landscape Services Manager.

9.2. Project Funding

Redevelopment projects are funded through University working capital, with new building projects incorporating landscaped areas guided by the Sustainability Team. The Landscape Services Team manages an annual budget of approximately £500,000 across all campuses. A detailed breakdown of major project spending is provided in the Implementation Plan (**Appendix B**).

9.3. Management Priorities

Short-term aims:

- Review and expand rewilded areas across campus
- Embed engagement activities into campus management
- Realign resources to complete key tasks

Long-term aims:

- Increase creation of habitats for invertebrates, birds, bats, and small mammals
- Secure additional funding to maintain and enhance green spaces

Appendices

Appendix A – Landscape Operations Service Level Agreement

Landscape Maintenance Operations

- 1. Mowing:** The Landscape Services (LS) team will manage & mow key areas from March to December each year. These areas will be kept to a height of between 25-75mm as appropriate. Where the weather significantly impacts these grass height parameters areas will be cut as soon as practicable and where weather & ground conditions permit.
- 2. Strimming:** the LS team will undertake this activity from March to December each year to maintain areas inaccessible by regular mowing i.e. around trees, obstacles and building perimeters. Subject to other work priorities the LS team aim to complete this task 3-6 times per year only.
- 3. Wildflower areas:** maintenance of these areas will be dependent upon local and species variations as well as prevailing weather and ground conditions. The maintenance of these areas, at Clifton Campus, sits with contractors unless agreed otherwise. Wildflower areas at Brackenhurst are managed by the LS team in conjunction with NTU ConSoc. All wildflower areas are subject to a cut-and-collect activity during late Aug/ early Sept.
- 4. Rewilded areas:** maintenance of these areas will be agreed/identified across all campuses to support biodiversity and plots may vary from year to year. These areas are left unmown from the end of April to early September after which they will be subject to a cut-and-collect process to tidy up for the Autumn.
- 5. Lawn edges:** where deemed necessary key areas will be subject to edging off with half-moons during the Autumn/Winter. Targeted areas will be subject to trimming back, with lawn shears, six times per year (Spring-Summer) to maintain a tidy edge along key ornamental beds.
- 6. Pruning:** Periodically prune and deadhead a wide range of plants depending on species and time throughout the full year.
- 7. Hedges/understorey mixes:** these will have their tops and sides pruned 1-2 times per year subject to location and potential visibility/safety issues as well as managing the health & vigour of hedges Any works during the bird nesting season (1st week of March - 1st week of Sept) will be subject to a bird nest survey 24 hours before any works commencing. All such surveys are to be signed, dated and kept for record.
- 8. Leaf clearance:** will be managed during the autumn & winter periods as part of overall landscape maintenance activities. However, due to the sheer volume of leaf fall, across all campuses, collection will be limited and prioritised accordingly.
- 9. Weed & pest control:** will be undertaken by a variety of methods in line with best practice which limits the use of pesticides to the absolute minimum. Such activities include mulching, hand weeding, and creative and selective planting. The use of herbicides will be through spot treatment and the number of applications will range between 3-6 times per year. From time to time, we will contract out broad-scale chemical control to specific areas i.e. grass sports pitches to improve the quality and integrity of the surfaces and this activity will be undertaken at times to keep impact, for users and the environment, to an absolute minimum.
- 10. Sports Pitches (Natural & Synthetic surfaces):** will be prepared, maintained, and set up to support on-campus student BUCS fixtures which will be supplied by NTU Sport. LS are committed to supporting all fixture commitments but will liaise with key stakeholders where prevailing weather and ground conditions may either (1) put the end user at risk and/or (2) put the integrity of the surfaces at risk and/or may cause long-term damage. Where a request comes

in for external use, we will consider the viability and potential implications whilst putting BUCS commitments as our primary consideration. The final decision on cancellations rests with the LS team and in particular the lead operative who maintains the NTU sports pitches. All grass sports surfaces will be reviewed, throughout the season, to determine any potential end-of-season renovations taking place soon after term 2. All decisions will also factor in available funds to do so.

11. **Arboriculture work:** All NTU trees and woodlands will be subject to a 3 yearly consultant's survey to determine the health, condition and potential risk posed (including any recommendations on replacements). Any recommended works will be prioritised as prescribed by the survey. The LS lead operative, who maintains the NTU trees and woodlands, will determine all other remedial works that may be required in between surveys and in particular as soon as practicable after any storms. This lead operative will report back, to management, on any interim works, that requires attention, and/or the intervention of further reports and support required by external arboriculturists/consultants. All related works will be completed in line with BS3998:2010. At key locations, some trees fall within conservation areas and may also be subject to Tree Preservation Orders (TPOs). Any work to these trees should first be assessed and approved by the relevant local authority tree officers, by submitting a formal application with all supporting evidence here. No works shall proceed until consent has been granted. This consent can take up to 8 weeks to be approved unless superseded by any immediate or obvious risks.
12. **Glasshouse work:** the LS team oversee the production of a range of plant materials to support various landscape projects and seasonal bedding schemes across NTU. Volume varies, subject to available resources, but can turn around up to 30k of propagated material every year from seed, cuttings and plugs should resources allow.
13. **Snow clearance & gritting:** will be supported, by the LS team, during adverse winter weather and in conjunction with other key personnel in line with the Estates Gritting Procedure
14. **Litter control:** as part of its routine activities the LS team will collect litter from key landscape areas such as sports areas, shrub beds and lawn areas (inc. dog waste bins). This will be underpinned with support from FSA operatives who oversee overall litter control for all NTU external spaces (inc. waste bins)
15. **Green Waste Recycling:** as part of its wide range of activities LS produces a significant amount of green waste including leaves, tree, and shrub arisings as well as grass cuttings. Such waste is managed via our recycling compound to generate compost to be returned to the NTU landscapes where mulching is required. This process reinforces our commitment to recycling green waste, generated by our activities, as well as reducing the reliance on water consumption and application of pesticides.
16. **Watering:** will be determined by landscape-specific demand throughout the year and be driven by the prevailing climate conditions. Where practicable we will utilise measures to reduce water usage such as the application of water-absorbing gel, wetting agents, and mulches. In addition, we will procure and plant drought-tolerant species, in key settings and aspects,
17. **Living Walls:** will be managed and maintained, through monthly visits/inspections, by external contractors.
18. **Indoor Planters:** which fall under the remit of LS only will be subject to monthly visits to carry out watering, feeding and general health and condition checks. All internal planters that fall outside of this remit will not be subject to such visits.
19. **Sedum Roof:** will be visited 1-2 per year to remove debris and weeds and check general condition. These visits will be carried out in the Autumn-Winter.
20. **Water Features:** will be maintained and tended to with a combination of LS and contractors as well as academics & students to support coursework and research.

Appendix B – Implementation Plan

	Action	Target	Budget	Timescale	Owner	Status
Clifton Campus	Develop biodiverse and social areas at the Central Approach	Create a more welcoming approach at the central entrance with seating, trees, and a garden area to improve the student experience while providing valuable habitat.	TBC	TBC	S	Approved, awaiting funding
	Develop student allotment	Continue to develop a student allotment first installed in Autumn 2014 to increase levels of engagement and the amount of organic fresh food produced.	£3k	2014-Present	S	Professional gardener and volunteers maintain the allotment weekly. Polytunnel and raised beds upgraded in 2024.
	Continue path-laying activity	To provide a good substrate for the nature trail, as mentioned in previous Green Flag feedback.	~£20k	2024+	L	First 300m laid in summer 2014. Aspirations to complete the trail pending funding.
	General maintenance regimes	To maintain and improve where possible the Clifton campus for staff, students, and wildlife.	Landscape Services annual budget circa £453k	Ongoing	L	Ongoing, routine. An example is attached in appendix A.

Develop Clifton Campus to provide more teaching facilities	Expand the built environment on campus whilst enriching biodiversity through green infrastructure.	TBC	Ongoing	CD	Ongoing, see appendix C for development mapped.
Create a Habitat and Protected Species Action Plan for Clifton Campus	To guide future campus development and the ongoing management of the estate to protect and enhance biodiversity	None required	2024+	S	Completed 2024 (See Appendix C for applicable habitats)
Implement rewilding areas across the Clifton campus	To increase the biodiversity of specific areas of grassland by allowing the area to rewild. This will result in the natural establishment of flora and increase the habitat provisions for invertebrates and amphibians.	TBC (signage costs for educational purposes)	2022-Present	L & S	Rewilded areas were first implemented in 2022. Signage is due for deployment in 2025

Action Owners:

- Sustainability Team (S)
- Landscaping Services (L)
- Capital Development Team (CD)
- Home Farm (HF)
- ARES School (ARES)

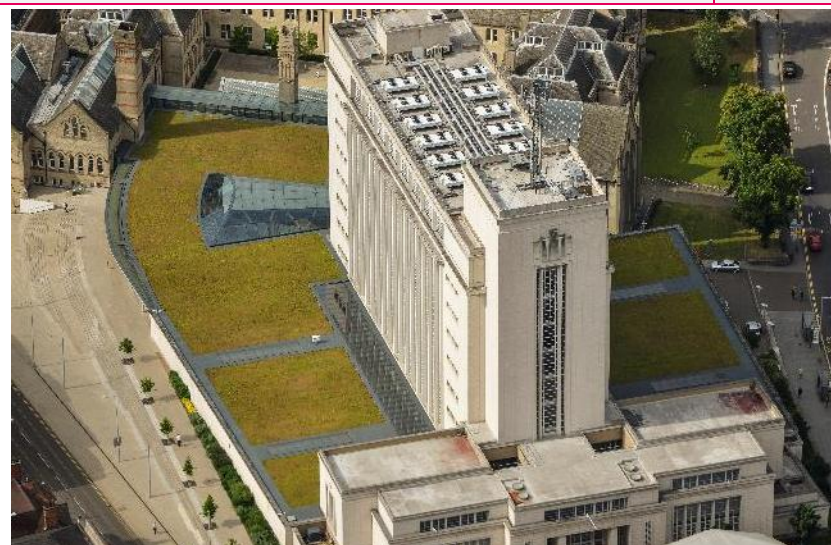
Appendix C – Habitat and Species Conservation Management Plan

Estate-Wide Actions

Action	Owner
Ensure compliance with all national and international legislation regarding biodiversity and the conservation of species and habitats.	S
Define and commission surveys to baseline NTU's biodiversity, produce habitat maps for the estate and set ambitious targets for biodiversity.	S
Prioritise the planting and management of native nectar and berry-producing species of local provenance across the estate's landscaping. Where non-native plants are used, ensure that they are carefully selected to enhance biodiversity.	L
Create new habitats through landscape management interventions or by using green and blue infrastructure, such as green roofs and living walls, within development footprints.	CD & L
Monitor and control any invasive species that are or become present within the estate; eradicate invasive species wherever possible.	L & S
Review the estate for habitat fragmentation; improve connectivity within the estate and within the wider landscape by strategically planting native tree species and creating wildlife corridors.	L & S
Where possible, hedgehog highways will be installed in physical barriers that affect connectivity and access e.g., fencing.	S
Continue to install and monitor bat boxes, bird boxes, bird feeders, hedgehog houses, insect hotels, hibernacula, and log piles across all campuses.	CD, L & S
Halt all use of peat-based products in the university's Landscaping Services activities from spring 2023.	L
Engage with staff, students, and visitors on the importance of biodiversity and actions that can be taken to conserve and enhance biodiversity within the estate e.g., using signage and citizen science monitoring projects.	S
Annually report on biodiversity actions undertaken across the estate within the Sustainability Report, which is publicly available on the NTU website.	S

Built Environment

Action	Owner
Ensure all new development projects minimise impacts on biodiversity, aiming to deliver a minimum of 10% biodiversity net gain.	CD
Improve the biodiversity of amenity grassland and formal greenspaces through targeted interventions, including reduced management to allow rewilding and wildflower planting, for the benefit of invertebrates, birds, hedgehogs, and amphibians. Rewilded areas are only to be managed through cut-and-collect in the autumn, to achieve & maintain low soil fertility.	L & S
Include bird and bat boxes in the vicinity of or integrated within the development of all new buildings and extend the installation of bird and bat boxes on existing buildings at all university campuses, to provide urban breeding and nesting habitats.	CD
Continually monitor and evaluate the impact of any development on biodiversity, to identify and address any negative impacts and improve conservation efforts.	CD & S
Aim to use sustainable building materials wherever possible, and consider the environmental lifecycle of buildings, to reduce the impact of any construction and preserve natural habitats.	CD



Woodland & Scrub

Action	Owner
Increase the species and structural diversity of woodlands, by targeting woodland management to create a diverse range of habitats e.g., allowing ground flora to grow by selectively thinning, planting suitable species e.g., those listed within the National Vegetation Classification (NVC) or translocating local leaf litter to encourage flora establishment in suitable habitats.	ARES & L
Create additional habitats in woodlands, such as log piles and leaf piles, to provide shelter for invertebrates, amphibians, and hedgehogs.	L
Standing dead wood and fallen timber will be left in situ unless they pose a safety hazard to footpaths, roads, or highly public areas. This will provide biodiversity benefits to a variety of species including invertebrates and birds.	L
Where practicable and safe to do so, as much standing dead wood will be left as possible and tree stumps will be cut as high as feasible to encourage invertebrates that are dependent on dead or decaying wood.	L
Proactively monitor potential external threats to tree stock, including the national spread of tree diseases; undertake pre-emptive action if required.	L
Install nesting boxes for various bird and bat species to encourage breeding populations and provide woodland shelter.	L & S
Protect all veteran trees within the estate and undertake regular condition inspections to determine sensitive management requirements and manage appropriately.	ARES & L



Non-Agricultural Grasslands

Action	Owner
Extend the area of diverse neutral grassland habitat, by reducing the area of amenity grassland across the estate.	L
Continue to review and expand rewilded and wildflower-planted areas within the estate, by reducing the management of grassland areas and planting local provenance native wildflower seed mixes of pollen and nectar-producing species.	ARES, L & S
Mow grassland areas annually from late summer, to allow wildflowers to set seed and propagate. Cuttings will be collected and removed to achieve and maintain low-fertility soils.	L
Encourage species diversity by reducing soil fertility and introducing local province native species such as yellow rattle.	L
Before the management of grassland, checks will be undertaken for any hedgehogs or other wildlife in the area, to reduce the risk of harm from mowing and strimming equipment. "Check for hedgehogs" warning labels are present on all grounds maintenance equipment as a reminder for staff.	L



Wetland & Water

Action	Owner
Continue to improve the ecological value of ponds across the Brackenhurst campus through targeted management.	ARES, HF, CD & S
Provide a buffer margin of wildflowers or grass meadows around ponds, to provide habitats for wildlife, reduce sediment inputs and reduce excess nutrients.	ARES, HF & L
Promote habitat connectivity between wetlands and hedgerows or woodland edges, to provide improved green network routes for amphibians and mammals.	ARES, HF & L
Provide submerged, floating, and marginal vegetation within freshwater pond habitats, to support invertebrates, amphibians, and birds.	ARES, L & ARES
Create hibernacula in key locations close to wetland habitats, to provide refuge for amphibians.	ARES & L
Ensure that all ponds on the estate have sloping sides or log and stone piles, to ensure that hedgehogs and other wildlife can exit the water easily.	ARES & S



Appendix D – Clifton Campus Habitat Map



